




Rabbit Anti-LRRK2 antibody

SL0683R

| | |
|---|---|
| Product Name: | LRRK2 |
| Chinese Name: | 富亮氨酸重复激酶2抗体 |
| Alias: | Dardarin; Leucine rich repeat kinase 2; LRRK 2; LRRK-2; LRRK2; PARK 8; PARK8; ROCO 2; ROCO-2; ROCO2; Leucine-rich repeat serine/threonine-protein kinase 2; Dardarin; LRRK2_HUMAN; augmented in rheumatoid arthritis 17; AURA17; Leucine rich repeat kinase 2; RIPK7. |
| 文献引用  : | Specific References(1) SL0683R has been referenced in 1 publications. [IF=2.94]Zhang, Shuai-nan, et al. "Cerebral potential biomarkers discovery and metabolic pathways analysis of α -synucleinopathies and the dual effects of Acanthopanax senticosus Harms on central nervous system through metabolomics analysis." Journal of ethnopharmacology (2015).WB;Mouse. PubMed:25660332 |
| Organism Species: | Rabbit |
| Clonality: | Polyclonal |
| React Species: | Human,Mouse,Rat,Cow, |
| Applications: | WB=1:500-2000ELISA=1:500-1000IHC-P=1:400-800IHC-F=1:400-800Flow-Cyt=1 μ g/TestIF=1:100-500 (Paraffin sections need antigen repair) not yet tested in other applications. optimal dilutions/concentrations should be determined by the end user. |
| Molecular weight: | 286kDa |
| Cellular localization: | cytoplasmicThe cell membrane |
| Form: | Lyophilized or Liquid |
| Concentration: | 1mg/ml |
| immunogen: | KLH conjugated synthetic peptide derived from human LRRK2:2455-2527/2527 |
| Lsotype: | IgG |
| Purification: | affinity purified by Protein A |
| Storage Buffer: | 0.01M TBS(pH7.4) with 1% BSA, 0.03% Proclin300 and 50% Glycerol. |

| | |
|------------------------|---|
| Storage: | Store at -20 °C for one year. Avoid repeated freeze/thaw cycles. The lyophilized antibody is stable at room temperature for at least one month and for greater than a year when kept at -20°C. When reconstituted in sterile pH 7.4 0.01M PBS or diluent of antibody the antibody is stable for at least two weeks at 2-4 °C. |
| PubMed: | PubMed |
| Product Detail: | <p>LRRK2 (Dardarin) is encoded by the gene LRRK2. Genetic mutations of LRRK2 have been linked to Parkinsonism and synucleinopathies. LRRK2 belongs to the ROCO protein family and includes a protein kinase domain of the MAPKKK class and several other major functional domains.</p> <p>Function: May play a role in the phosphorylation of proteins central to Parkinson disease. Phosphorylates PRDX3. May also have GTPase activity.</p> <p>Subcellular Location: Cytoplasm. Membrane. Mitochondrion. Localized in the cytoplasm and associated with cellular membrane structures. Associates with the mitochondrial outer membrane.</p> <p>Tissue Specificity: Expressed throughout the adult brain, but at a lower level than in heart and liver. Also expressed in placenta, lung, skeletal muscle, kidney and pancreas. In the brain, expressed in the cerebellum, cerebral cortex, medulla, spinal cord occipital pole, frontal lobe, temporal lobe and putamen. Expression is particularly high in brain dopaminoceptive areas.</p> <p>DISEASE: Defects in LRRK2 are the cause of Parkinson disease type 8 (PARK8) [MIM:607060]. A slowly progressive neurodegenerative disorder characterized by bradykinesia, rigidity, resting tremor, postural instability, neuronal loss in the substantia nigra, and the presence of neurofibrillary MAPT (tau)-positive and Lewy bodies in some patients.</p> <p>Similarity: Belongs to the protein kinase superfamily. TKL Ser/Thr protein kinase family. Contains 12 LRR (leucine-rich) repeats. Contains 1 protein kinase domain. Contains 1 Roc domain.</p> <p>SWISS: Q5S007</p> <p>Gene ID: 120892</p> <p>Database links: Entrez Gene: 120892Human</p> |

[Entrez Gene: 66725](#)Mouse

[Entrez Gene: 300160](#)Rat

[Omim: 609007](#)Human

[SwissProt: Q5S007](#)Human

[SwissProt: Q5S006](#)Mouse

[Unigene: 187636](#)Human

[Unigene: 37558](#)Mouse

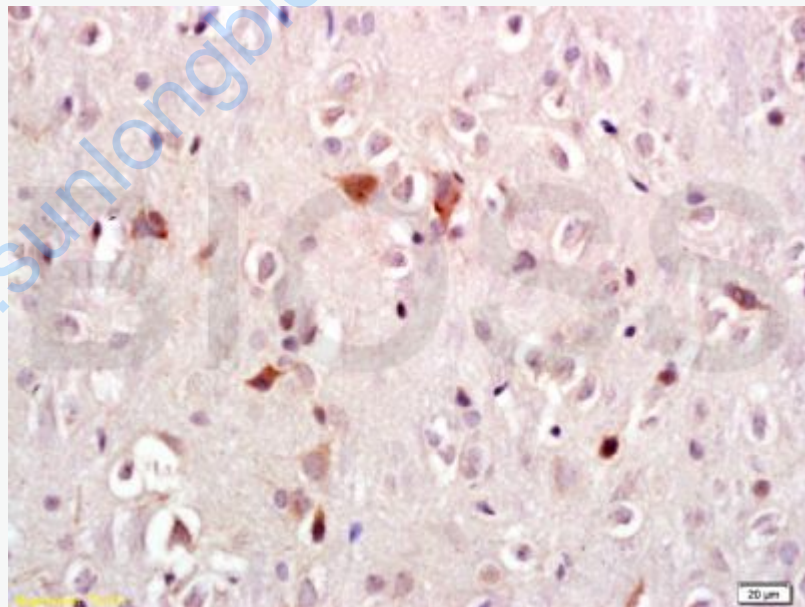
[Unigene: 213971](#)Rat

Important Note:

This product as supplied is intended for research use only, not for use in human, therapeutic or diagnostic applications.

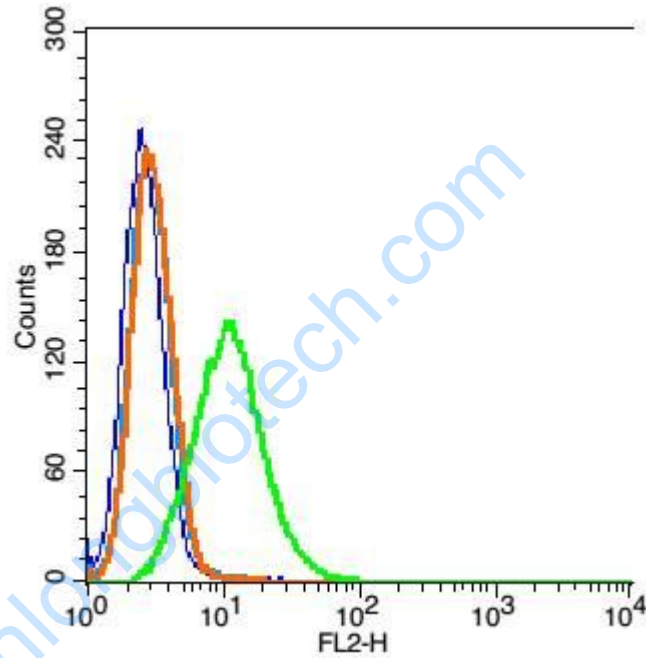
主要用于：帕金森氏病的研究
亮氨酸丰富区重复激酶2

Picture:



Tissue/cell: rat brain tissue; 4% Paraformaldehyde-fixed and paraffin-embedded;
Antigen retrieval: citrate buffer (0.01M, pH 6.0), Boiling bathing for 15min; Block
endogenous peroxidase by 3% Hydrogen peroxide for 30min; Blocking buffer
(normal goat serum,C-0005) at 37°C for 20 min;

Incubation: Anti-LRRK2 Polyclonal Antibody, Unconjugated(SL0683R) 1:300, overnight at 4°C, followed by conjugation to the secondary antibody(SP-0023) and DAB(C-0010) staining



Blank control: A549(blue), the cells were fixed with 2% paraformaldehyde (10 min) and then permeabilized with ice-cold 90% methanol for 30 min on ice..

Isotype Control Antibody: Rabbit IgG(orange) ; Secondary Antibody: Goat anti-rabbit IgG-FITC(white blue), Dilution: 1:100 in 1 X PBS containing 0.5% BSA ; Primary Antibody Dilution: 1µg in 100 µL1X PBS containing 0.5% BSA(green).