



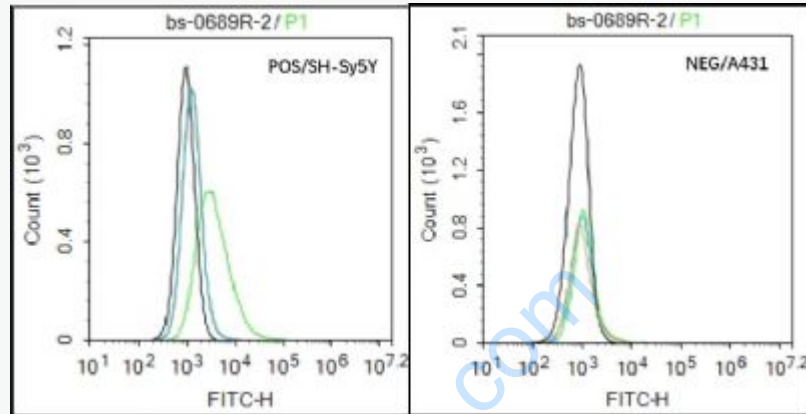
Rabbit Anti-PEPT1 antibody

SL0689R

Product Name:	PEPT1
Chinese Name:	肠道肽Transporter1/小肽Transporter1抗体
Alias:	SLC15A1; Oligopeptide transporter, small intestine isoform; Peptide transporter 1; Intestinal H(+)/peptide cotransporter; Solute carrier family 15 member 1(SLC15A1); +peptide cotransporter; HPECT1; HPEPT1; Human peptide transporter (HPEPT1) mRNA complete cds; Intestinal H; Oligopeptide transporter small intestine isoform; PEPT1; Peptide transporter 1; Solute carrier family 15 (oligopeptide transporter) member 1; S15A1 HUMAN.
文献引用 PubMed :	<p>Specific References(1)SL0689R has been referenced in 1 publications.</p> <p>[IF=3.73]Xu, Qingbiao, et al. "Establishment and Characterization of an Omasal Epithelial Cell Model Derived from Dairy Calves for the Study of Small Peptide Absorption." PLOS ONE 9.3 (2014): e88993.Bovine.</p> <p style="text-align: right;">PubMed:24633419</p>
Organism Species:	Rabbit
Clonality:	Polyclonal
React Species:	Human,Mouse,Rat,Chicken,Dog,Pig,Cow,
Applications:	WB=1:500-2000ELISA=1:500-1000Flow-Cyt=2μg/Test not yet tested in other applications. optimal dilutions/concentrations should be determined by the end user.
Molecular weight:	79kDa
Cellular localization:	The cell membrane
Form:	Lyophilized or Liquid
Concentration:	1mg/ml
immunogen:	KLH conjugated synthetic peptide derived from human PEPT1:101-200/714(chk)<Cytoplasmic>
Lsotype:	IgG
Purification:	affinity purified by Protein A

Storage Buffer:	0.01M TBS(pH7.4) with 1% BSA, 0.03% Proclin300 and 50% Glycerol.
Storage:	Store at -20 °C for one year. Avoid repeated freeze/thaw cycles. The lyophilized antibody is stable at room temperature for at least one month and for greater than a year when kept at -20°C. When reconstituted in sterile pH 7.4 0.01M PBS or diluent of antibody the antibody is stable for at least two weeks at 2-4 °C.
PubMed:	PubMed
Product Detail:	<p>PEPT1(Oligopeptide transporter, small intestine isoform (Peptide transporter 1) (Intestinal H(+)/peptide cotransporter) (Solute carrier family 15 member 1) Proton-coupled intake of oligopeptides of 2 to 4 amino acids with a preference for dipeptides. May constitute a major route for the absorption of protein digestion end-products. Subcellular Location: membrane; Multi-pass membrane protein. Tissue Specificity Intestine, kidney, liver and low in brain. Belongs to the PTR2/POT transporter (TC 2.A.17) family.</p> <p>Function: Proton-coupled intake of oligopeptides of 2 to 4 amino acids with a preference for dipeptides. May constitute a major route for the absorption of protein digestion end-products.</p> <p>Subcellular Location: Membrane; Multi-pass membrane protein.</p> <p>Similarity: Belongs to the PTR2/POT transporter (TC 2.A.17) family.</p> <p>SWISS: Q90WH8</p> <p>Gene ID: 6564</p> <p>Database links: Entrez Gene: 6564Human Omim: 600544Human SwissProt: P46059Human Unigene: 436893Human</p> <p>Important Note: This product as supplied is intended for research use only, not for use in human, therapeutic or diagnostic applications.</p> <p>小肽Transporter又称寡肽Transporter;</p>

小肽是蛋白质在动物体内消化的主要产物，而位于小肠刷状缘膜上的小肽Transporter 在小肽的吸收过程中发挥重要作用，因此PepT1的活性直接影响小肽的吸收。PepT1主要在消化道中表达，在肾脏中也有微弱的表达。PepT1是低亲和力、高容量的肽载体PepT2是高亲和力、低容量的肽载体。PepT2主要在肾脏中表达。



Black line : Positive blank control SH-Sy5Y); Negative blank control (A431)

Green line : Primary Antibody (Rabbit Anti-PEPT1 antibody (SL0689R))

Orange line : Isotype Control Antibody (Rabbit IgG) .

Blue line : Secondary Antibody (Goat anti-rabbit IgG-AF488)

SH-Sy5Y (Positive) and A431 (Negative control) cells (black) were incubated in 5%

BSA blocking buffer for 30 min at room temperature. Cells were then stained with

PEPT1 Antibody(SL0689R)at 1:50 dilution in blocking buffer and incubated for 30

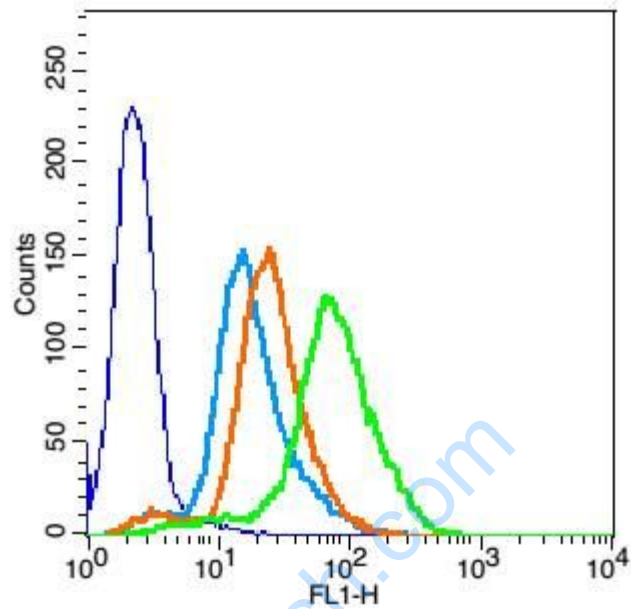
min at room temperature, washed twice with 2% BSA in PBS, followed by

secondary antibody(blue) incubation for 40 min at room temperature. Acquisitions

of 20,000 events were performed. Cells stained with primary antibody (green), and

isotype control (orange).

Picture:



Blank control: HCCLM3(blue)

Isotype Control Antibody: Rabbit IgG(orange) ; Secondary Antibody: Goat anti-rabbit IgG-FITC(white blue), Dilution: 1:100 in 1 X PBS containing 0.5% BSA ;

Primary Antibody Dilution: 3 μ l in 100 μ L1X PBS containing 0.5% BSA(green).