




## Rabbit Anti-Ceramide glucosyltransferase antibody

SL0701R

<b>Product Name:</b>	Ceramide glucosyltransferase
<b>Chinese Name:</b>	谷氨酸半胱氨酸 $\gamma$ 合成酶抗体
<b>Alias:</b>	CEGT_HUMAN; UGCG; GCS; GLCT 1; GLCT-1; GLCT1; Glucosylceramide synthase; UDP glucose ceramide glucosyltransferase; UDP glucose N acylsphingosine D glucosyltransferase; UDP-glucose ceramide glucosyltransferase; UDP-glucose:N-acylsphingosine D-glucosyltransferase; Ugcg.
<b>文献引用</b>  :	<b>Specific References(1)</b>  SL0701R has been referenced in 1 publications. <b>[IF=1.49]</b> Chen, Baoan, et al. "Effect of D, L-threo-1-phenyl-2-decanoylamino-3-morpholino-1-propanol and tetrandrine on the reversion of multidrug resistance in K562/A02 cells." <i>gy</i> 16.1 (2011): 24-30..: 1064-1 <a href="#">PubMed:21269564</a>
<b>Organism Species:</b>	Rabbit
<b>Clonality:</b>	Polyclonal
<b>React Species:</b>	Human,Mouse,Rat,Cow,
<b>Applications:</b>	ELISA=1:500-1000IHC-P=1:400-800IHC-F=1:400-800Flow-Cyt=1 $\mu$ g/TestIF=1:100-500 (Paraffin sections need antigen repair) not yet tested in other applications. optimal dilutions/concentrations should be determined by the end user.
<b>Molecular weight:</b>	44kDa
<b>Cellular localization:</b>	cytoplasmicThe cell membrane
<b>Form:</b>	Lyophilized or Liquid
<b>Concentration:</b>	1mg/ml
<b>immunogen:</b>	KLH conjugated synthetic peptide derived from human GCS:21-120/394
<b>Lsotype:</b>	IgG
<b>Purification:</b>	affinity purified by Protein A

<b>Storage Buffer:</b>	0.01M TBS(pH7.4) with 1% BSA, 0.03% Proclin300 and 50% Glycerol.
<b>Storage:</b>	Store at -20 °C for one year. Avoid repeated freeze/thaw cycles. The lyophilized antibody is stable at room temperature for at least one month and for greater than a year when kept at -20°C. When reconstituted in sterile pH 7.4 0.01M PBS or diluent of antibody the antibody is stable for at least two weeks at 2-4 °C.
<b>PubMed:</b>	<a href="#">PubMed</a>
<b>Product Detail:</b>	<p>GCS (glucosylceramide synthase ) may serve as a 'flippase' as well as a glucosyltransferase that transfers glucose to ceramide. Able to use UDP-galactose to synthesize galactosylceramide with 10% of efficiency with which it utilizes UDP-glucose. [Catalytic activity] UDP-glucose + N-acylsphingosine = UDP + D-glucosyl-N-acylsphingosine. Lipid metabolism; sphingolipid metabolism. [Subcellular location] Endoplasmic reticulum membrane; Multi-pass membrane protein. Belongs to the glucosyltransferase 2 family.</p> <p><b>Function:</b> Catalyzes the first glycosylation step in glycosphingolipid biosynthesis, the transfer of glucose to ceramide.</p> <p><b>Subcellular Location:</b> Golgi apparatus membrane.</p> <p><b>Tissue Specificity:</b> Found in all tissues examined.</p> <p><b>Similarity:</b> Belongs to the glucosyltransferase 2 family.</p> <p><b>SWISS:</b> Q16739</p> <p><b>Gene ID:</b> 7357</p> <p><b>Database links:</b></p> <p><a href="#">Entrez Gene: 7357</a>Human</p> <p><a href="#">Entrez Gene: 22234</a>Mouse</p> <p><a href="#">Entrez Gene: 83626</a>Rat</p> <p><a href="#">Omim: 602874</a>Human</p> <p><a href="#">SwissProt: Q16739</a>Human</p> <p><a href="#">SwissProt: O88693</a>Mouse</p> <p><a href="#">SwissProt: Q9R0E0</a>Rat</p>

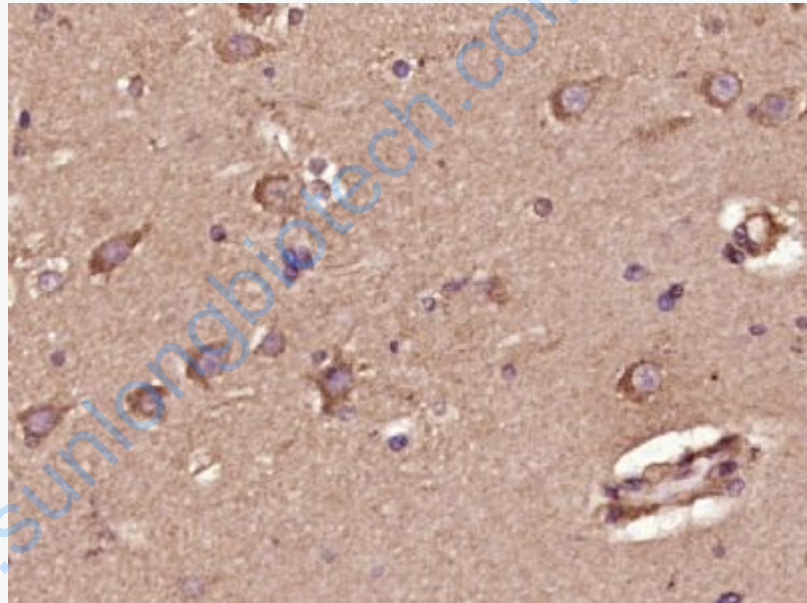
[Unigene: 304249](#)Human

**Important Note:**

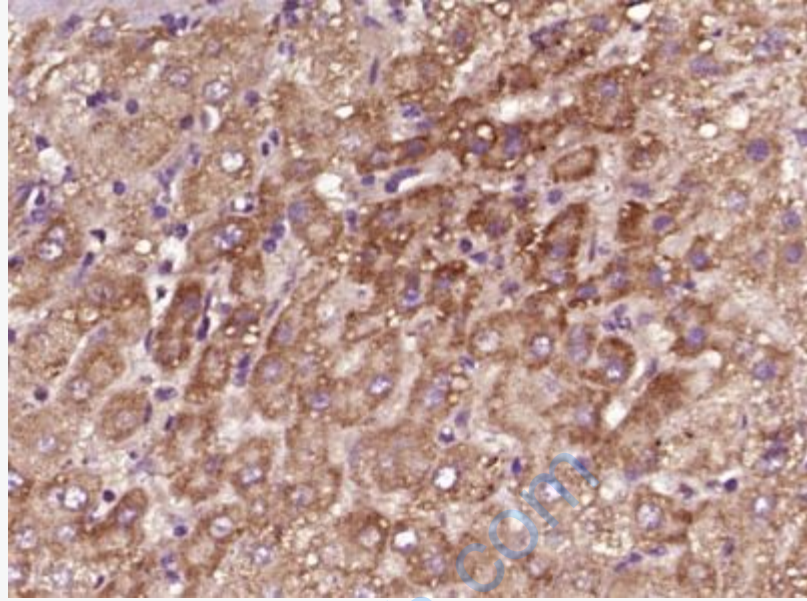
This product as supplied is intended for research use only, not for use in human, therapeutic or diagnostic applications.

谷氨酸半胱氨酸 $\gamma$ 合成酶又称葡萄糖神经酰胺合成酶(glucosylceramide synthase, GCS)是调控神经酰胺代谢的关键酶之一,其活性水平与Tumour细胞多药耐药有密切关系.有研究报道GCS在人卵巢癌细胞、口腔表皮癌细胞、黑色素瘤细胞、乳腺癌细胞及胆囊癌、胃癌中均有表达.

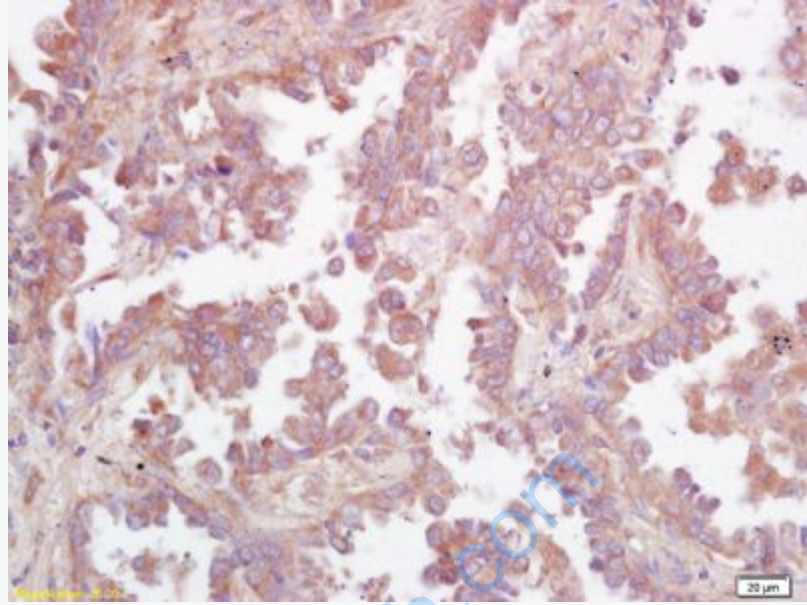
**Picture:**



Paraformaldehyde-fixed, paraffin embedded (Human glioma); Antigen retrieval by boiling in sodium citrate buffer (pH6.0) for 15min; Block endogenous peroxidase by 3% hydrogen peroxide for 20 minutes; Blocking buffer (normal goat serum) at 37°C for 30min; Antibody incubation with (Ceramide glucosyltransferase) Polyclonal Antibody, Unconjugated (SL0701R) at 1:400 overnight at 4°C, followed by operating according to SP Kit(Rabbit) (sp-0023) instructions and DAB staining.



Paraformaldehyde-fixed, paraffin embedded (Human liver cancer); Antigen retrieval by boiling in sodium citrate buffer (pH6.0) for 15min; Block endogenous peroxidase by 3% hydrogen peroxide for 20 minutes; Blocking buffer (normal goat serum) at 37°C for 30min; Antibody incubation with (Ceramide glucosyltransferase) Polyclonal Antibody, Unconjugated (SL0701R) at 1:400 overnight at 4°C, followed by operating according to SP Kit(Rabbit) (sp-0023) instructions and DAB staining.

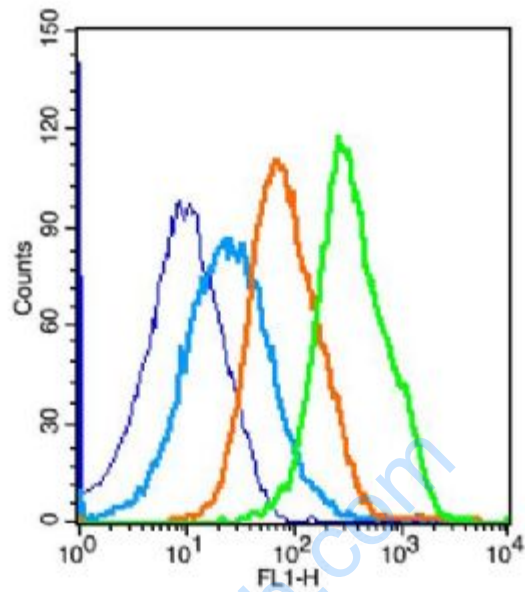


Tissue/cell: human lung carcinoma; 4% Paraformaldehyde-fixed and paraffin-embedded;

Antigen retrieval: citrate buffer ( 0.01M, pH 6.0 ), Boiling bathing for 15min; Block endogenous peroxidase by 3% Hydrogen peroxide for 30min; Blocking buffer (normal goat serum,C-0005) at 37°C for 20 min;

Incubation: Anti-GCS/glucosylceramide synthase Polyclonal Antibody,

Unconjugated(SL0701R) 1:200, overnight at 4°C, followed by conjugation to the secondary antibody(SP-0023) and DAB(C-0010) staining



Key	Name	Parameter	Gate
—	(mo)Splenocyte-blank.036	FL1-H	G1
—	bs-0295G-FITC-(mo)Sp#1E5870.037	FL1-H	G1
—	bs-0295P-(FITC)-(mo)#1E5874.038	FL1-H	G1
—	bs-0701R-(FITC)-(mo)#1E5879.043	FL1-H	G1

Blank control: mouse splenocytes(blue)

Isotype Control Antibody: Rabbit IgG(orange) ; Secondary Antibody: Goat anti-rabbit IgG-FITC(white blue), Dilution: 1:100 in 1 X PBS containing 0.5% BSA ;

Primary Antibody Dilution: 1µl in 100 µL1X PBS containing 0.5% BSA(green).