



Rabbit Anti-FAM3B antibody

SL0711R

Product Name:	FAM3B
Chinese Name:	胰腺衍生因子抗体
Alias:	C21orf11; PANDER; Cytokine like protein 2 21; PRED44; PANcreatic DERived factor; Protein FAM3B; Protein FAM3B precursor; Family with sequence similarity 3, member B isoform a; FAM3B_MOUSE.
Organism Species:	Rabbit
Clonality:	Polyclonal
React Species:	Human,Mouse,Rat,
Applications:	WB=1:500-2000ELISA=1:500-1000IHC-P=1:400-800IHC-F=1:400-800IF=1:100-500 (Paraffin sections need antigen repair) not yet tested in other applications. optimal dilutions/concentrations should be determined by the end user.
Molecular weight:	23kDa
Cellular localization:	Secretory protein
Form:	Lyophilized or Liquid
Concentration:	1mg/ml
immunogen:	KLH conjugated synthetic peptide derived from human FAM3B:1-100/235
Lsotype:	IgG
Purification:	affinity purified by Protein A
Storage Buffer:	0.01M TBS(pH7.4) with 1% BSA, 0.03% Proclin300 and 50% Glycerol.
Storage:	Store at -20 °C for one year. Avoid repeated freeze/thaw cycles. The lyophilized antibody is stable at room temperature for at least one month and for greater than a year when kept at -20°C. When reconstituted in sterile pH 7.4 0.01M PBS or diluent of antibody the antibody is stable for at least two weeks at 2-4 °C.
PubMed:	PubMed
Product Detail:	FAM3B has delayed effects on beta-cell function, inhibiting basal insulin secretion from a beta-cell line in a dose-dependent manner. [Subcellular Location] Secreted. Note=Localized in discrete vesicular and perinuclear structure. Highly expressed in the pancreas. Also found in the colon, kidney, prostate, small intestine and testis. 2 N-termini have been observed in the mature protein: the first at Glu-30, resulting from

signal peptide cleavage, the second at Ser-46. Belongs to the FAM3 family.

Function:

Induces apoptosis of alpha and beta cells in a dose- and time-dependent manner.

Subcellular Location:

Secreted. Note=Present in insulin secretory granules and likely cosecreted with insulin. Localized in discrete vesicular and perinuclear structure.

Tissue Specificity:

Highly expressed in the pancreas. Also found in the colon, kidney, prostate, small intestine and testis.

Post-translational modifications:

2 N-termini have been observed in the mature protein: the first at Glu-30, resulting from signal peptide cleavage, the second at Ser-46. O-glycosylated.

Similarity:

Belongs to the FAM3 family.

SWISS:

Q9D309

Gene ID:

52793

Database links:

[Entrez Gene: 54097](#)Human

[Entrez Gene: 52793](#)Mouse

[Oimim: 608617](#)Human

[SwissProt: P58499](#)Human

[SwissProt: Q9D309](#)Mouse

[Unigene: 473877](#)Human

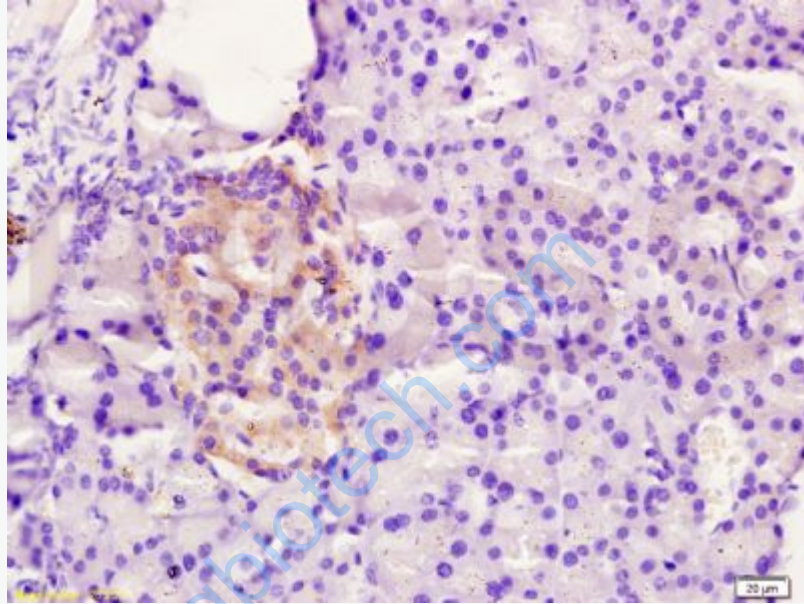
[Unigene: 670704](#)Human

[Unigene: 327932](#)Mouse

Important Note:

This product as supplied is intended for research use only, not for use in human, therapeutic or diagnostic applications.

胰腺衍生因子(PANcreatic DERived fa*ctor, PANDER)是新发现的一种新型的胰岛cell factor、由胰岛 α 细胞和 β 细胞分泌的一种分泌型cell factor, 与 β Apoptosis密切相关, 可以诱导胰岛素分泌 β 细胞, 主要用于Diabetes的研究。



Picture:

Tissue/cell: rat pancreas tissue; 4% Paraformaldehyde-fixed and paraffin-embedded;
Antigen retrieval: citrate buffer (0.01M, pH 6.0), Boiling bathing for 15min; Block endogenous peroxidase by 3% Hydrogen peroxide for 30min; Blocking buffer (normal goat serum,C-0005) at 37°C for 20 min;
Incubation: Anti-FAM3B/PANDER Polyclonal Antibody, Unconjugated(SL0711R) 1:200, overnight at 4°C, followed by conjugation to the secondary antibody(SP-0023) and DAB(C-0010) staining