




Rabbit Anti-CEA antibody

SL0719R

Product Name:	CEA
Chinese Name:	癌胚抗原抗体
Alias:	Carcinoembryonic antigen; Carcinoembryonic antigen related cell adhesion molecule 5; Carcinoembryonic antigen-related cell adhesion molecule 5; CD66e; CD66e; CD66e antigen; CEA; CEA; CEACAM5; CEAM5_HUMAN; DKFZp781M2392; Meconium antigen 100; OTTHUMP00000199032; OTTHUMP00000199033; OTTHUMP00000199034.
文献引用 	<p>Specific References(4)SL0719R has been referenced in 4 publications.</p> <p>[IF=6.38]Zhang, Jing-Jing, et al. "??Proof-of-principle?? concept for ultrasensitive detection of cytokines based on the electrically heated carbon paste electrode."hemical Communications 47.23 (2011): 6551-6553. PubMed:21547293</p> <p>[IF=5.44]Hou, Li, et al. "Graphene oxide-labeled sandwich-type impedimetric immunoassay with sensitive enhancement based on enzymatic 4-chloro-1-naphthol oxidation." Biosensors and Bioelectronics (2013).ELISA; PubMed:23567634</p> <p>[IF=6.45]Chen, Ze-Zhong, et al. "Indirect immunofluorescence detection of E. coli O157: H7 with fluorescent silica Nanoparticles." Biosensors and Bioelectronics (2014). PubMed:25460888</p> <p>[IF=6.45]Hou, Li, et al. "HCR-stimulated formation of DNAzyme concatamers on gold nanoparticle for ultrasensitive impedimetric immunoassay." Biosensors and Bioelectronics (2015).other; PubMed:25636020</p>

Organism Species:	Rabbit
Clonality:	Polyclonal
React Species:	Human,
Applications:	ELISA=1:500-1000IHC-P=1:400-800IHC-F=1:400-800Flow-Cyt=1µg/testIF=1:100-500 (Paraffin sections need antigen repair) not yet tested in other applications. optimal dilutions/concentrations should be determined by the end user.
Molecular weight:	150-200kDa
Cellular localization:	The cell membrane
Form:	Lyophilized or Liquid
Concentration:	1mg/ml
immunogen:	KLH conjugated synthetic peptide derived from human CEA:301-400/702
Lsotype:	IgG
Purification:	affinity purified by Protein A
Storage Buffer:	0.01M TBS(pH7.4) with 1% BSA, 0.03% Proclin300 and 50% Glycerol.
Storage:	Store at -20 °C for one year. Avoid repeated freeze/thaw cycles. The lyophilized antibody is stable at room temperature for at least one month and for greater than a year when kept at -20°C. When reconstituted in sterile pH 7.4 0.01M PBS or diluent of antibody the antibody is stable for at least two weeks at 2-4 °C.
PubMed:	PubMed
Product Detail:	<p>CEA-related cell adhesion molecules (CEACAM) belong to the carcinoembryonic antigen (CEA) family. It consists of seven CEACAM (CEACAM 1, CEACAM 3-CEACAM 8) and 11 pregnancy-specific glyco-protein (PSG 1-PSG 11) members. The CEA family proteins belong to the immunoglobulin (Ig) superfamily and are composed of one Ig variable-like (IgV) and a varying number (0-6) of Ig constant-like (IgC) domains. CEACAM molecules are membrane-bound either via a transmembrane domain or a glycosyl phosphatidyl inositol (GPI) anchor. CEACAM molecules are differentially expressed in epithelial cells or in leucocytes. Over-expression of CEA/ CEACAM 5 in tumors of epithelial origin is the basis of its wide-spread use as a tumor marker. The function of CEACAM family members varies widely: they function as cell adhesion molecules, tumor suppressors, regulators of lymphocyte and dendritic cell activation, receptors of Neisseria species and other bacteria.</p> <p>Function: Cell surface glycoprotein that plays a role in cell adhesion and in intracellular signaling. Receptor for E.coli Dr adhesins.</p> <p>Subunit: Homodimer. Binding of E.coli Dr adhesins leads to dissociation of the homodimer.</p> <p>Subcellular Location: Cell membrane; Lipid-anchor, GPI-anchor.</p> <p>Tissue Specificity: Found in adenocarcinomas of endoderally derived digestive system epithelium and</p>

fetal colon.

Post-translational modifications:

Complex immunoreactive glycoprotein with a MW of 180 kDa comprising 60% carbohydrate.

Similarity:

Belongs to the immunoglobulin superfamily. CEA family.
Contains 7 Ig-like (immunoglobulin-like) domains.

SWISS:

P06731

Gene ID:

1048

Database links:

[Entrez Gene: 1048](#)Human

[Omid: 114890](#)Human

[SwissProt: P06731](#)Human

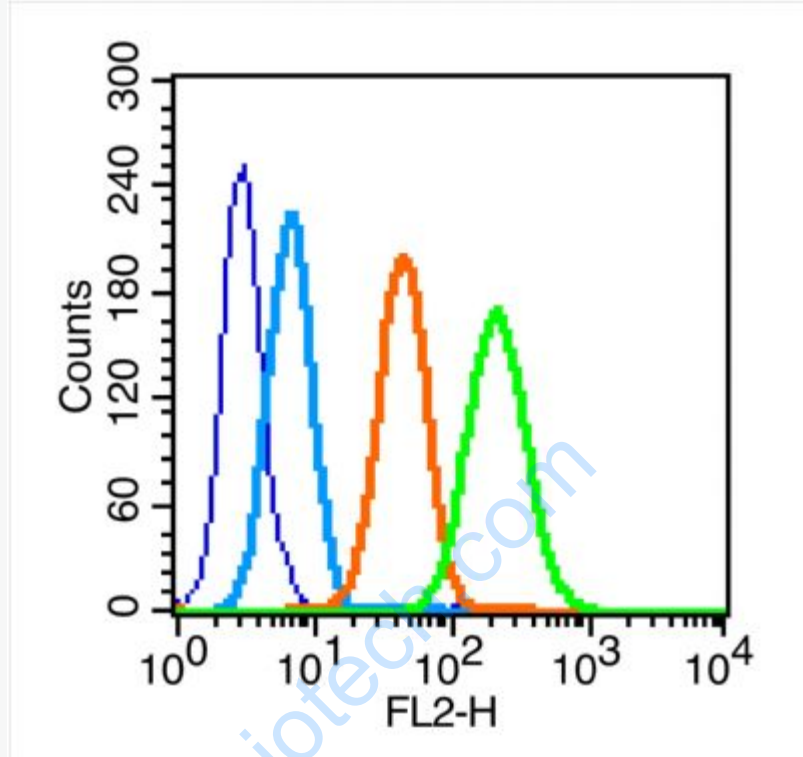
[Unigene: 709196](#)Human

Important Note:

This product as supplied is intended for research use only, not for use in human, therapeutic or diagnostic applications.

CEA是一种胚胎性抗原, 主要存在于胎儿消化道上皮组织, 胰腺和肝癌中。CEA广泛存在各种上皮性Tumour, 尤其是胃肠道恶性Tumour, CEA分布阳性类型与Tumour的恶性度有关。CEA与EMA一样可作为上皮性恶性Tumour的重要标记。

Picture:



Blank control (blue line): MCF7 (fixed with 70% methanol overnight at 4°C).

Primary Antibody (green line): Rabbit Anti-CEA antibody (SL0719R)

Dilution: 0.2µg /10⁶ cells;

Isotype Control Antibody (orange line): Rabbit IgG .

Secondary Antibody (white blue line): Goat anti-rabbit IgG-PE

Dilution: 1µg /test.