




Rabbit Anti-Galectin 3 antibody

SL0721R

Product Name:	Galectin 3
Chinese Name:	半乳糖凝集素3抗体
Alias:	Galectin-3; 35 kDa lectin; Carbohydrate binding protein 35; CBP 35; CBP35; GAL 3; GAL3; Galactose specific lectin 3; Galactose-specific lectin 3; Galactoside binding protein; Galactoside-binding protein; GALBP; Galectin3 internal gene,included; Galectin-3; Galectin3; GALIG; GBP; IgE binding protein; IgE-binding protein; L 31; L 34; L-34 galactoside-binding lectin; L31; Laminin binding protein; Laminin-binding protein; Lectin galactose binding soluble 3; Lectin galactoside binding soluble 3; Lectin L 29; Lectin L-29; Lectin, galactose binding, soluble 3; LGALS 3; LGALS2; LGALS3; LGALS3 protein; MAC 2 antigen; Mac-2; MAC2; Macrophage galactose-specific lectin; MGC105387;Galectin- 3; LEG3_HUMAN.
文献引用 	<p>Specific References(2) SL0721R has been referenced in 2 publications.</p> <p>[IF=1.08]Lee, Ju Yeon, et al. "Molecular cloning and expression analysis of pig CD7." Veterinary Research Communications (2014): 1-7.Pig. PubMed:24792331</p> <p>[IF=5.36]White, Michael JV, David Roife, and Richard H. Gomer. "Galectin-3 Binding Protein Secreted by Breast Cancer Cells Inhibits Monocyte-Derived Fibrocyte Differentiation." The Journal of Immunology (2015): 1500365.other;Human. PubMed:26136428</p>
Organism Species:	Rabbit
Clonality:	Polyclonal
React Species:	Human,Mouse,
Applications:	ELISA=1:500-1000IHC-P=1:400-800IHC-F=1:400-800IF=1:100-500 (Paraffin sections need antigen repair) not yet tested in other applications. optimal dilutions/concentrations should be determined by the end user.

Molecular weight:	29kDa
Cellular localization:	The nucleuscytoplasmicThe cell membraneSecretory protein
Form:	Lyophilized or Liquid
Concentration:	1mg/ml
immunogen:	KLH conjugated synthetic peptide derived from human Galectin 3:151-250/250
Lsotype:	IgG
Purification:	affinity purified by Protein A
Storage Buffer:	0.01M TBS(pH7.4) with 1% BSA, 0.03% Proclin300 and 50% Glycerol.
Storage:	Store at -20 °C for one year. Avoid repeated freeze/thaw cycles. The lyophilized antibody is stable at room temperature for at least one month and for greater than a year when kept at -20°C. When reconstituted in sterile pH 7.4 0.01M PBS or diluent of antibody the antibody is stable for at least two weeks at 2-4 °C.
PubMed:	PubMed
Product Detail:	<p>This gene encodes a member of the galectin family of carbohydrate binding proteins. Members of this protein family have an affinity for beta-galactosides. The encoded protein is characterized by an N-terminal proline-rich tandem repeat domain and a single C-terminal carbohydrate recognition domain. This protein can self-associate through the N-terminal domain allowing it to bind to multivalent saccharide ligands. This protein localizes to the extracellular matrix, the cytoplasm and the nucleus. This protein plays a role in numerous cellular functions including apoptosis, innate immunity, cell adhesion and T-cell regulation. Alternate splicing results in multiple transcript variants.[provided by RefSeq, Apr 2010].</p> <p>Function: Galactose-specific lectin which binds IgE. May mediate with the alpha-3, beta-1 integrin the stimulation by CSPG4 of endothelial cells migration. Together with DMBT1, required for terminal differentiation of columnar epithelial cells during early embryogenesis. In the nucleus: acts as a pre-mRNA splicing factor. Involved in acute inflammatory responses including neutrophil activation and adhesion, chemoattraction of monocytes macrophages, opsonization of apoptotic neutrophils, and activation of mast cells.</p> <p>Subunit: Probably forms homo- or heterodimers. Interacts with DMBT1 (By similarity). Forms a complex with the ITGA3, ITGB1 and CSPG4. Interacts with LGALS3BP, LYPD3, CYHR1 and UACA.</p> <p>Subcellular Location: Cytoplasm. Nucleus. Secreted. Note=Secreted by a non-classical secretory pathway and associates with the cell surface.</p> <p>Tissue Specificity: A major expression is found in the colonic epithelium. It is also abundant in the activated macrophages.</p> <p>Similarity:</p>

Contains 1 galectin domain.

SWISS:
P17931

Gene ID:
3958

Database links:

[Entrez Gene: 3958](#)Human

[Entrez Gene: 16854](#)Mouse

[Entrez Gene: 83781](#)Rat

[Omin: 153619](#)Human

[SwissProt: P17931](#)Human

[SwissProt: P16110](#)Mouse

[SwissProt: P08699](#)Rat

[Unigene: 531081](#)Human

[Unigene: 248615](#)Mouse

[Unigene: 764](#)Rat

Important Note:

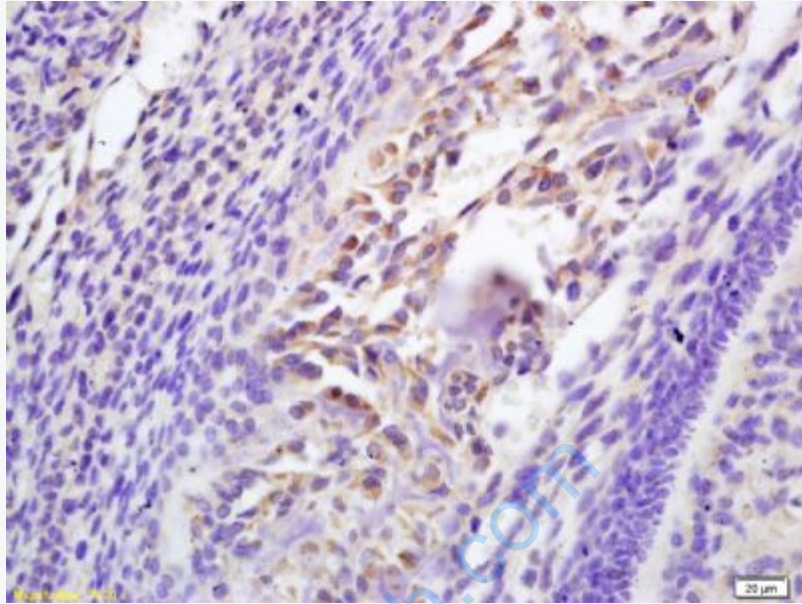
This product as supplied is intended for research use only, not for use in human, therapeutic or diagnostic applications.

Galectin-

3是Galectin(半乳凝素)家族的一员,能识别glycoprotein和糖脂的特异性低聚糖结构,参与多种生理和病理过程,包括细胞生长和凋亡、细胞黏附、新生血管形成和Tumour浸润与转移等。Galectin-3在Tumour的发生、发展及转移中起重要作用。

Galectin-

3在某些Tumour组织中高表达,其在不同类型Tumour,如结直肠癌、胃癌、胰腺癌、甲状腺癌及肺癌等患者中的高表达水平,与低生存、Tumour复发、预后差及对化疗药物敏感性降低相关对于某些Tumour, Galectin-3有可能成为一个有价值的诊断标志和治疗靶点。

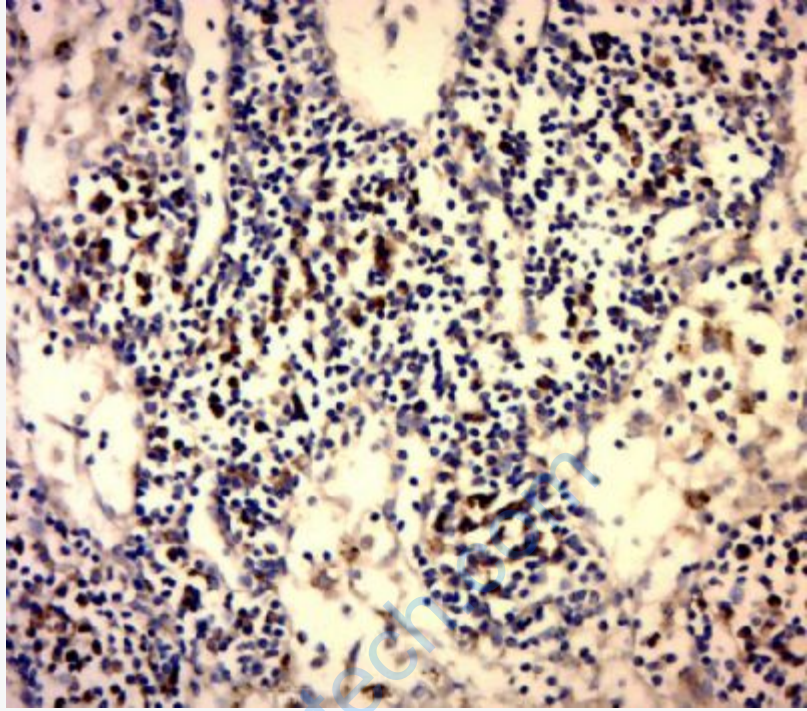


Picture:

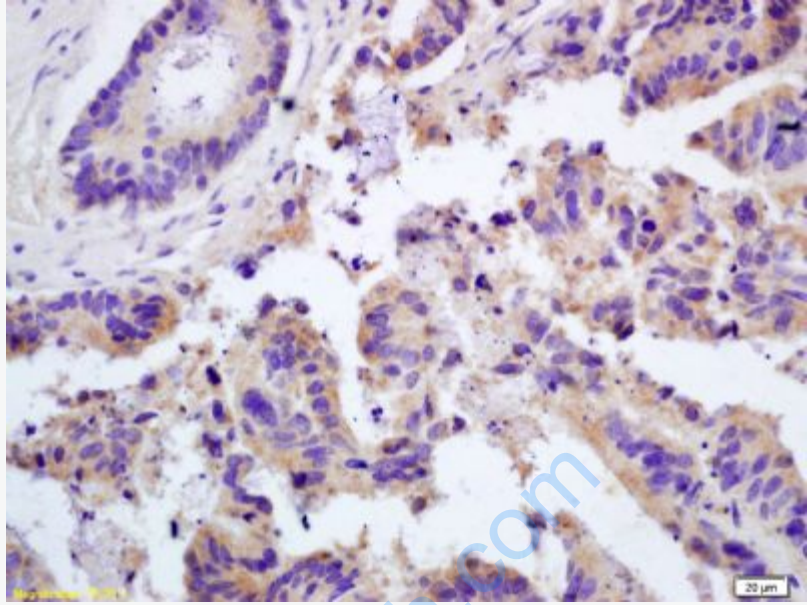
Tissue/cell: mouse embryo tissue; 4% Paraformaldehyde-fixed and paraffin-embedded;

Antigen retrieval: citrate buffer (0.01M, pH 6.0), Boiling bathing for 15min; Block endogenous peroxidase by 3% Hydrogen peroxide for 30min; Blocking buffer (normal goat serum,C-0005) at 37°C for 20 min;

Incubation: Anti-Galectin 3 Polyclonal Antibody, Unconjugated(SL0721R) 1:200, overnight at 4°C, followed by conjugation to the secondary antibody(SP-0023) and DAB(C-0010) staining



Paraformaldehyde-fixed, paraffin embedded (Cervical Cancer); Antigen retrieval by boiling in sodium citrate buffer (pH6.0) for 15min; Block endogenous peroxidase by 3% hydrogen peroxide for 20 minutes; Blocking buffer (normal goat serum) at 37°C for 30min; Antibody incubation with (Galectin 3) Polyclonal Antibody, Unconjugated (SL0721R) at 1:500 overnight at 4°C, followed by a conjugated secondary (sp-0023) for 20 minutes and DAB staining.



Tissue/cell: human colon carcinoma; 4% Paraformaldehyde-fixed and paraffin-embedded;

Antigen retrieval: citrate buffer (0.01M, pH 6.0), Boiling bathing for 15min; Block endogenous peroxidase by 3% Hydrogen peroxide for 30min; Blocking buffer (normal goat serum,C-0005) at 37°C for 20 min;

Incubation: Anti-Galectin 3 Polyclonal Antibody, Unconjugated(SL0721R) 1:200, overnight at 4°C, followed by conjugation to the secondary antibody(SP-0023) and DAB(C-0010) staining