



Rabbit Anti-Spindlin 1 antibody

SL0724R

Product Name:	Spindlin 1
Chinese Name:	卵巢癌相关蛋白抗体
Alias:	Spindlin-like protein 2; SPIN-2; DXF34; OCR; Ovarian cancer-related protein; SPIN; Spin1; SPIN1 HUMAN; Spindlin-1.
Organism Species:	Rabbit
Clonality:	Polyclonal
React Species:	Human,Mouse,Rat,
Applications:	ELISA=1:500-1000IHC-P=1:400-800IHC-F=1:400-800IF=1:100-500 (Paraffin sections need antigen repair) not yet tested in other applications. optimal dilutions/concentrations should be determined by the end user.
Molecular weight:	29kDa
Cellular localization:	The nucleus
Form:	Lyophilized or Liquid
Concentration:	1mg/ml
immunogen:	KLH conjugated synthetic peptide derived from human Spindlin 1:3-100/237
Isotype:	IgG
Purification:	affinity purified by Protein A
Storage Buffer:	0.01M TBS(pH7.4) with 1% BSA, 0.03% Proclin300 and 50% Glycerol.
Storage:	Store at -20 °C for one year. Avoid repeated freeze/thaw cycles. The lyophilized antibody is stable at room temperature for at least one month and for greater than a year when kept at -20°C. When reconstituted in sterile pH 7.4 0.01M PBS or diluent of antibody the antibody is stable for at least two weeks at 2-4 °C.
PubMed:	PubMed
Product Detail:	Spindlin 1 (Spindlin-like protein 2; SPIN-2) protein May play a role in cell-cycle regulation during the transition from gamete to embryo. Subcellular location in the Nucleus. Belongs to the SPIN/STSY family. Function: May play a role in cell-cycle regulation during the transition from gamete to embryo (By

similarity).

Subunit:

Homodimer; may form higher-order oligomers.

Subcellular Location:

Nucleus.

Post-translational modifications:

Phosphorylated during oocyte meiotic maturation.

Similarity:

Belongs to the SPIN/STSY family.

SWISS:

Q9Y657

Gene ID:

10927

Database links:

[Entrez Gene: 10927](#)Human

[Omim: 609936](#)Human

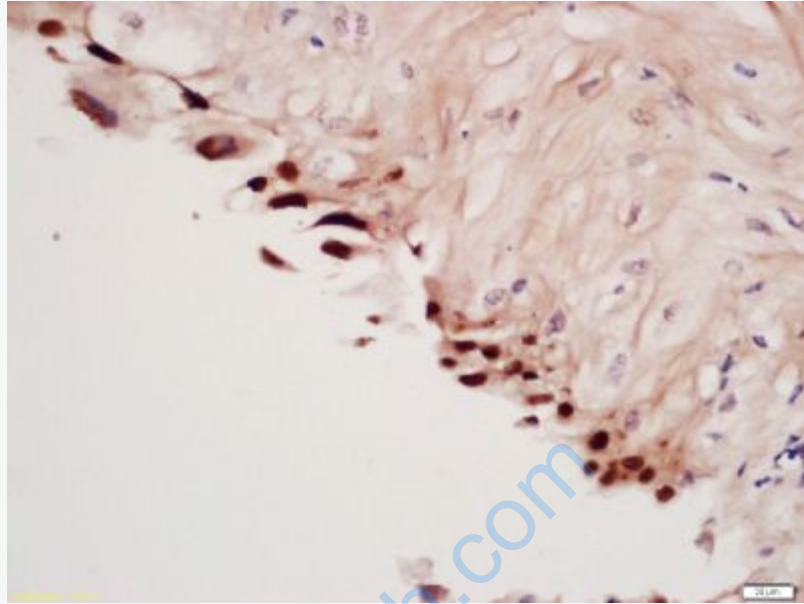
[SwissProt: Q9Y657](#)Human

[Unigene: 146804](#)Human

Important Note:

This product as supplied is intended for research use only, not for use in human, therapeutic or diagnostic applications.

spindlin1 又称: DXF34 经研究发现, 可能是一种与Tumour形成相关的原癌基因.



Picture:

Tissue/cell: Human Cervical Cancer tissue; 4% Paraformaldehyde-fixed and paraffin-embedded;

Antigen retrieval: citrate buffer (0.01M, pH 6.0), Boiling bathing for 15min; Block endogenous peroxidase by 3% Hydrogen peroxide for 30min; Blocking buffer (normal goat serum,C-0005) at 37°C for 20 min;

Incubation: Anti-Spindlin 1 Polyclonal Antibody, Unconjugated(SL0724R) 1:200, overnight at 4°C, followed by conjugation to the secondary antibody(SP-0023) and DAB(C-0010) staining