



Rabbit Anti-CTGF antibody

SL0743R

Product Name:	CTGF
Chinese Name:	结缔组织生长因子抗体
Alias:	CCN 2; CCN-2; CCN2; Connective Tissue Growth Factor; CTGF; Hcs 24; Hcs24; Hypertrophic chondrocyte specific protein 24; Hypertrophic chondrocyte-specific gene product 24; Insulin-like Growth Factor-Binding Protein 8; MGC102839; NOV 2; NOV2; Connective tissue growth factor; CCN family member 2; Hypertrophic chondrocyte-specific protein 24; Insulin-like growth-binding protein 8; IBP-8; IGF-binding protein 8; IGFBP8; IGFBP-8; connective tissue growth factor precursor; CTGF_HUMAN.
文献引用 PubMed :	<p>Specific References(3) SL0743R has been referenced in 3 publications.</p> <p>[IF=2.24]Tian, Yanyan, et al. "Effects of vitamin D on renal fibrosis in diabetic nephropathy model rats." International Journal of Clinical and Experimental Pathology 7.6 (2014): 3028-3037.IHC-P;Rat. PubMed:25031721</p> <p>[IF=8.46]Ciamporcero, E., et al. "YAP activation protects urothelial cell carcinoma from treatment-induced DNA damage." Oncogene (2015).WB;Human. PubMed:26119935</p> <p>[IF=1.74]Al-hamilly, Nadia Saeed, et al. "Biological roles of KGF, CTGF and TGF-β in cyclosporine-A-and phenytoin-induced gingival overgrowth: A comparative experimental animal study." Archives of oral biology 66 (2016): 38-43.IHC-P;Rat. PubMed:26894526</p>
Organism Species:	Rabbit
Clonality:	Polyclonal
React Species:	Human,Mouse,Rat,Chicken,Dog,Pig,Cow,

Applications:	WB=1:500-2000ELISA=1:500-1000IHC-P=1:400-800IHC-F=1:400-800IF=1:100-500 (Paraffin sections need antigen repair) not yet tested in other applications. optimal dilutions/concentrations should be determined by the end user.
Molecular weight:	36kDa
Cellular localization:	Extracellular matrixSecretory protein
Form:	Lyophilized or Liquid
Concentration:	1mg/ml
immunogen:	KLH conjugated synthetic peptide derived from human CTGF:221-349/349
Isotype:	IgG
Purification:	affinity purified by Protein A
Storage Buffer:	0.01M TBS(pH7.4) with 1% BSA, 0.03% Proclin300 and 50% Glycerol.
Storage:	Store at -20 °C for one year. Avoid repeated freeze/thaw cycles. The lyophilized antibody is stable at room temperature for at least one month and for greater than a year when kept at -20°C. When reconstituted in sterile pH 7.4 0.01M PBS or diluent of antibody the antibody is stable for at least two weeks at 2-4 °C.
PubMed:	PubMed
Product Detail:	<p>The protein encoded by this gene is a mitogen that is secreted by vascular endothelial cells. The encoded protein plays a role in chondrocyte proliferation and differentiation, cell adhesion in many cell types, and is related to platelet-derived growth factor. Certain polymorphisms in this gene have been linked with a higher incidence of systemic sclerosis. [provided by RefSeq, Nov 2009].</p> <p>Function: Major connective tissue mitoattractant secreted by vascular endothelial cells. Promotes proliferation and differentiation of chondrocytes. Mediates heparin- and divalent cation-dependent cell adhesion in many cell types including fibroblasts, myofibroblasts, endothelial and epithelial cells. Enhances fibroblast growth factor-induced DNA synthesis.</p> <p>Subunit: Monomer.</p> <p>Subcellular Location: Secreted, extracellular space, extracellular matrix. Secreted.</p> <p>Tissue Specificity: Expressed in bone marrow and thymic cells. Also expressed one of two Wilms tumors tested.</p> <p>Similarity: Belongs to the CCN family. Contains 1 CTCK (C-terminal cystine knot-like) domain. Contains 1 IGFBP N-terminal domain. Contains 1 TSP type-1 domain. Contains 1 VWFC domain.</p>

SWISS:
P29279

Gene ID:
1490

Database links:

[Entrez Gene: 1490](#)Human

[Entrez Gene: 64032](#)Rat

[Oimim: 121009](#)Human

[SwissProt: P29279](#)Human

[SwissProt: P29268](#)Mouse

[SwissProt: Q9R1E9](#)Rat

[Unigene: 410037](#)Human

[Unigene: 390287](#)Mouse

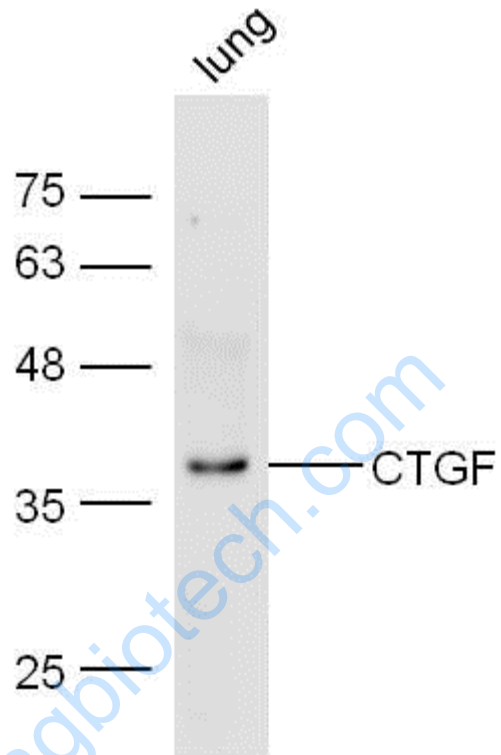
Important Note:

This product as supplied is intended for research use only, not for use in human, therapeutic or diagnostic applications.

Growth factors and hormones (Growth Factor and Hormones)

结缔组织生长因子(CTGF)是调节细胞增生、分化和Extracellular matrix形成的重要效应分子,可调节机体有关组织、细胞生长并与纤维化发生密切相关的一种因子,因而在肌体的各类创伤修复过程中具有重要的生理学意义。

Picture:



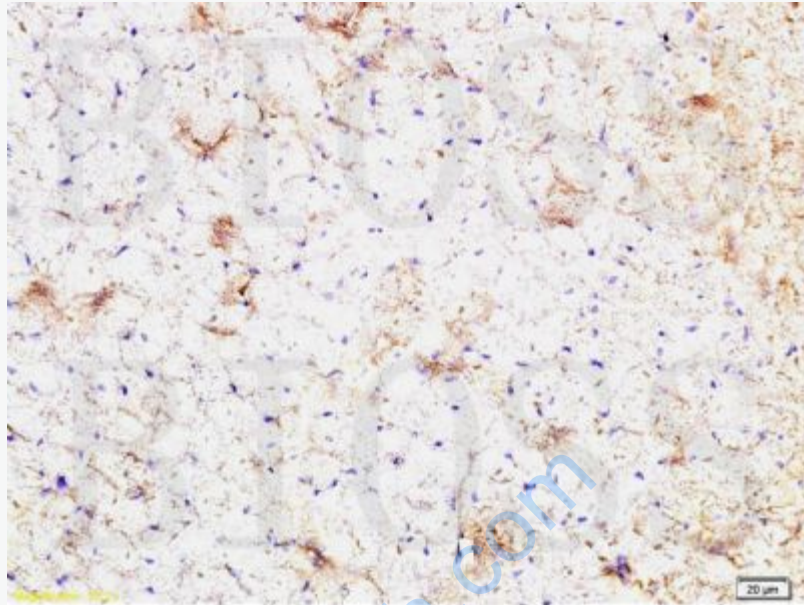
Sample: Lung Lysate at 40 ug

Primary: Anti- CTGF (SL0743R) at 1/300 dilution

Secondary: IRDye800CW Goat Anti-Rabbit IgG at 1/10000 dilution

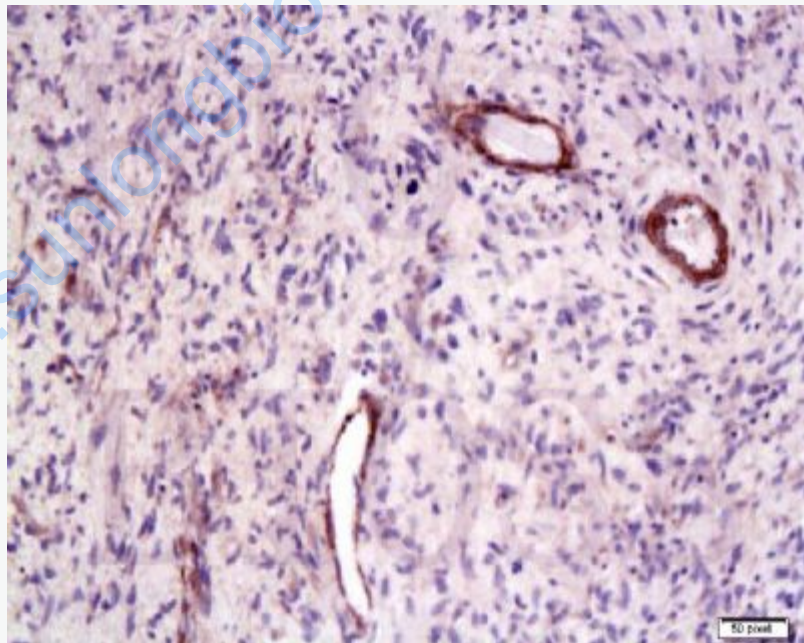
Predicted band size: 36 kD

Observed band size: 36 kD



bs-0743R Anti-CTGF

Formalin-fixed and paraffin-embedded rat heart tissue labeled with Rabbit Anti-CTGF Polyclonal Antibody, Unconjugated(bs-0743R) at 1:200 followed by conjugation to the secondary antibody and DAB staining



bs-0743R Anti-CTGF

Formalin-fixed and paraffin-embedded human laryngeal cancer labeled with Rabbit Anti-CTGF Polyclonal Antibody, Unconjugated(bs-0743R) at 1:200 followed by conjugation to the secondary antibody and DAB staining