



Rabbit Anti-CEAcam8 antibody

SL0744R

Product Name:	CEAcam8
Chinese Name:	癌胚抗原相关Cell adhesion molecule8抗体
Alias:	Carcinoembryonic Antigen CGM6; Carcinoembryonic antigen gene family member 6; Carcinoembryonic Antigen Related Cell Adhesion Molecule 8; CD 66b; CD 67; CD66b antigen; CD67; CD67 antigen; CEACAM 8; CEACAM8; CGM 6; CGM6; NCA 95; NCA95; Nonspecific cross reacting antigen NCA 95; Non-specific -reacting antigen NCA-95; Nonspecific cross reacting antigen NCA95; CEAM8_HUMAN; Carcinoembryonic antigen-related cell adhesion molecule 8; CD66b.
Organism Species:	Rabbit
Clonality:	Polyclonal
React Species:	Human,
Applications:	WB=1:500-2000ELISA=1:500-1000IHC-P=1:400-800IHC-F=1:400-800IF=1:100-500 (Paraffin sections need antigen repair) not yet tested in other applications. optimal dilutions/concentrations should be determined by the end user.
Molecular weight:	38kDa
Cellular localization:	The cell membrane
Form:	Lyophilized or Liquid
Concentration:	1mg/ml
immunogen:	KLH conjugated synthetic peptide derived from human CEAcam8:51-150/349
Lsotype:	IgG
Purification:	affinity purified by Protein A
Storage Buffer:	0.01M TBS(pH7.4) with 1% BSA, 0.03% Proclin300 and 50% Glycerol.
Storage:	Store at -20 °C for one year. Avoid repeated freeze/thaw cycles. The lyophilized antibody is stable at room temperature for at least one month and for greater than a year when kept at -20°C. When reconstituted in sterile pH 7.4 0.01M PBS or diluent of antibody the antibody is stable for at least two weeks at 2-4 °C.
PubMed:	PubMed
Product Detail:	Carcinoembryonic antigen-related cell adhesion molecule 8 (CEACAM8) is a highly glycosylated protein expressed only in neutrophils and eosinophils in humans. The

precise function of CEACAM8 remains unclear. As a member of the family of carcinoembryonic antigen (CEA), it may play a role in the interaction between granulocytes or between granulocytes and epithelial cells. Expressed in leukocytes of chronic myeloid Leukemia patients and bone marrow.

Subcellular Location:

Cell membrane; Lipid-anchor, GPI-anchor.

Tissue Specificity:

Expressed in leukocytes of chronic myeloid Leukemia patients and bone marrow.

Similarity:

Belongs to the immunoglobulin superfamily. CEA family.
Contains 2 Ig-like C2-type (immunoglobulin-like) domains.
Contains 1 Ig-like V-type (immunoglobulin-like) domain.

SWISS:

P31997

Gene ID:

1088

Database links:

[Entrez Gene: 1088](#)Human

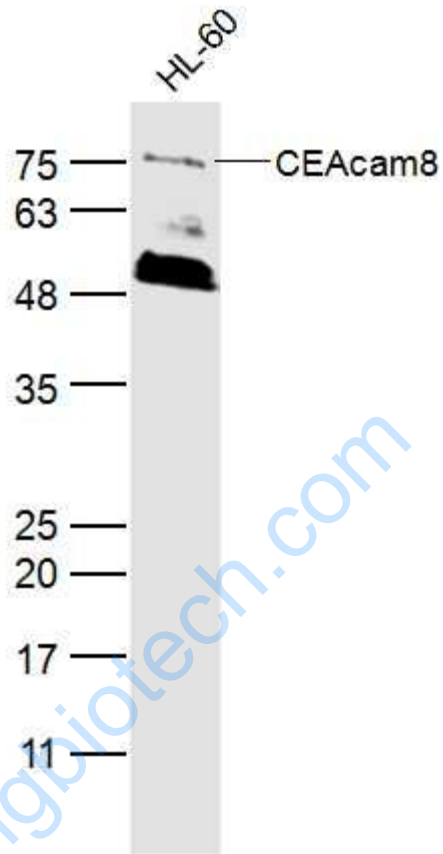
[SwissProt: P31997](#)Human

[Unigene: 41](#)Human

Important Note:

This product as supplied is intended for research use only, not for use in human, therapeutic or diagnostic applications.

Picture:



Sample:

HL-60(Human) Cell Lysate at 40 ug

Primary: Anti-CEAcam8 (SL0744R) at 1/300 dilution

Secondary: IRDye800CW Goat Anti-Rabbit IgG at 1/20000 dilution

Predicted band size: 38 kD

Observed band size: 75 kD