



Rabbit Anti-Kisspeptin antibody

SL0749R

Product Name:	Kisspeptin
Chinese Name:	Tumour转移抑制基因抗体
Alias:	KiSS-1 Metastasis Suppressor; Prepro-Kisspeptin; Kisspeptin-1; Malignant Melanoma Metastasis-Suppressor; Metastasis-Suppressor KiSS-1; Kisspeptin; Metastin; KiSS-1; HH13; KISS1_HUMAN;
Organism Species:	Rabbit
Clonality:	Polyclonal
React Species:	Human,Mouse,Rat,Cow,Sheep,
Applications:	ELISA=1:500-1000IHC-P=1:400-800IHC-F=1:400-800IF=1:100-500 (Paraffin sections need antigen repair) not yet tested in other applications. optimal dilutions/concentrations should be determined by the end user.
Molecular weight:	16kDa
Cellular localization:	Secretory protein
Form:	Lyophilized or Liquid
Concentration:	1mg/ml
immunogen:	KLH conjugated synthetic peptide derived from human Kiss-1:81-145/145
Lsotype:	IgG
Purification:	affinity purified by Protein A
Storage Buffer:	0.01M TBS(pH7.4) with 1% BSA, 0.03% Proclin300 and 50% Glycerol.
Storage:	Store at -20 °C for one year. Avoid repeated freeze/thaw cycles. The lyophilized antibody is stable at room temperature for at least one month and for greater than a year when kept at -20°C. When reconstituted in sterile pH 7.4 0.01M PBS or diluent of antibody the antibody is stable for at least two weeks at 2-4 °C.
PubMed:	PubMed
Product Detail:	This gene is a metastasis suppressor gene that suppresses metastases of melanomas and breast carcinomas without affecting tumorigenicity. The encoded protein may inhibit chemotaxis and invasion and thereby attenuate metastasis in malignant melanomas. Studies suggest a putative role in the regulation of events downstream of cell-matrix adhesion, perhaps involving cytoskeletal reorganization. A protein product of this gene,

kisspeptin, stimulates gonadotropin-releasing hormone (GnRH)-induced gonadotropin secretion and regulates the pubertal activation of GnRH neurons. A polymorphism in the terminal exon of this mRNA results in two protein isoforms. An adenosine present at the polymorphic site represents the third position in a stop codon. When the adenosine is absent, a downstream stop codon is utilized and the encoded protein extends for an additional seven amino acid residues. [provided by RefSeq, Mar 2012]

Function:

Metastasis suppressor protein in malignant melanomas and in some breast cancers. May regulate events downstream of cell-matrix adhesion, perhaps involving cytoskeletal reorganization. Generates a C-terminally amidated peptide, metastin which functions as the endogenous ligand of the G-protein coupled receptor GPR54. Activation of the receptor inhibits cell proliferation and cell migration, key characteristics of tumor metastasis. Kp-10 is a decapeptide derived from the primary translation product, isolated in conditioned medium of first trimester trophoblast. Kp-10, but not other kisspeptins, increased intracellular Ca²⁺ levels in isolated first trimester trophoblasts. Kp-10 is a paracrine/endocrine regulator in fine-tuning trophoblast invasion generated by the trophoblast itself. The receptor is also essential for normal gonadotropin-released hormone physiology and for puberty. The hypothalamic KiSS1/GPR54 system is a pivotal factor in central regulation of the gonadotropic axis at puberty and in adulthood.

Subcellular Location:

Secreted.

Tissue Specificity:

Very high expression in placenta, with the next highest level in testis and moderate levels in pancreas, liver, small intestine and brain at much lower levels. Expression levels increased in both early placentas and molar pregnancies and are reduced in choriocarcinoma cells. Expressed at higher levels in first trimester trophoblasts than at term of gestation, but only expressed in the villous trophoblast.

Post-translational modifications:

Processed by MMP2 and MMP9.

Similarity:

Belongs to the KISS1 family.

SWISS:

Q15726

Gene ID:

3814

Database links:

[Entrez Gene: 3814](#) Human

[Entrez Gene: 289023](#) Rat

[Omin: 603286](#) Human

[SwissProt: Q15726](#) Human

[SwissProt: Q7TSB7](#) Rat

[Unigene: 95008](#) Human

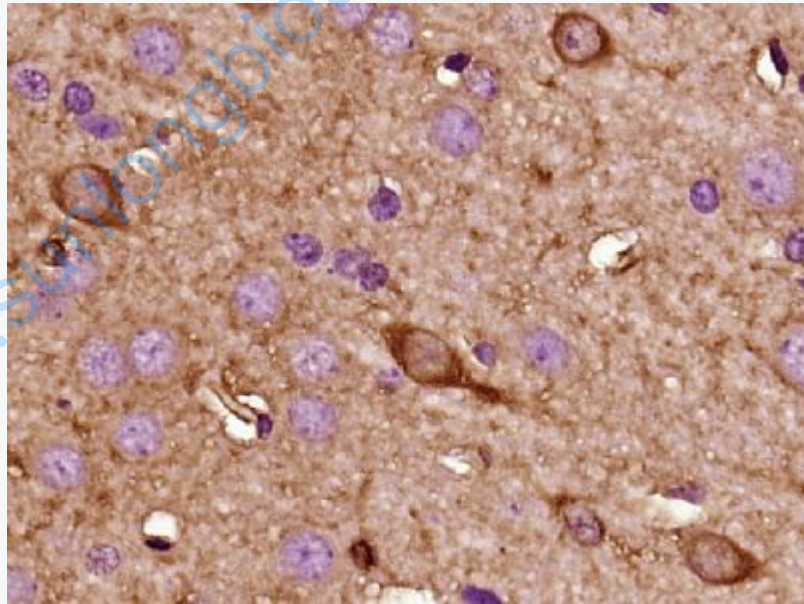
[Unigene: 66008](#) Rat

Important Note:

This product as supplied is intended for research use only, not for use in human, therapeutic or diagnostic applications.

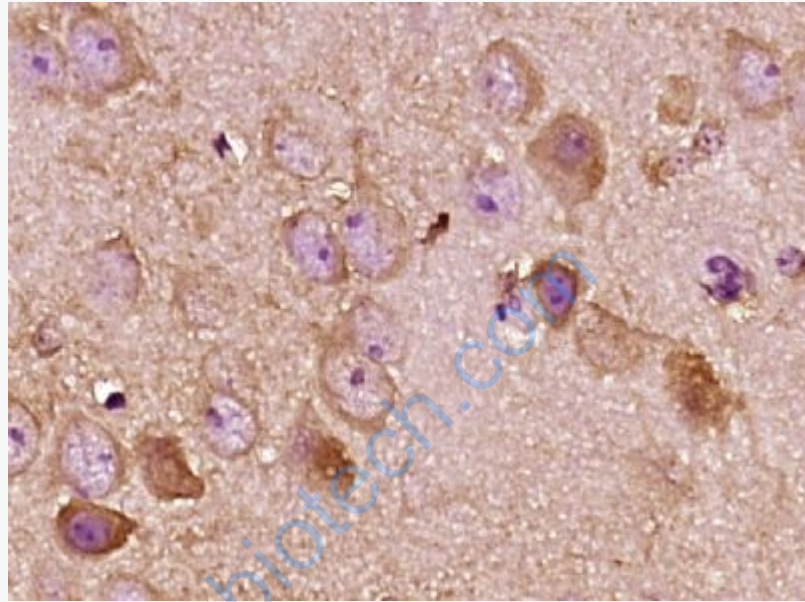
Kiss-1主要用于Tumour及Tumour转移方面的研究。近年来Kiss-1与MMP-9、MMP-2是Tumour转移、浸润研究的热门课题。

Picture:

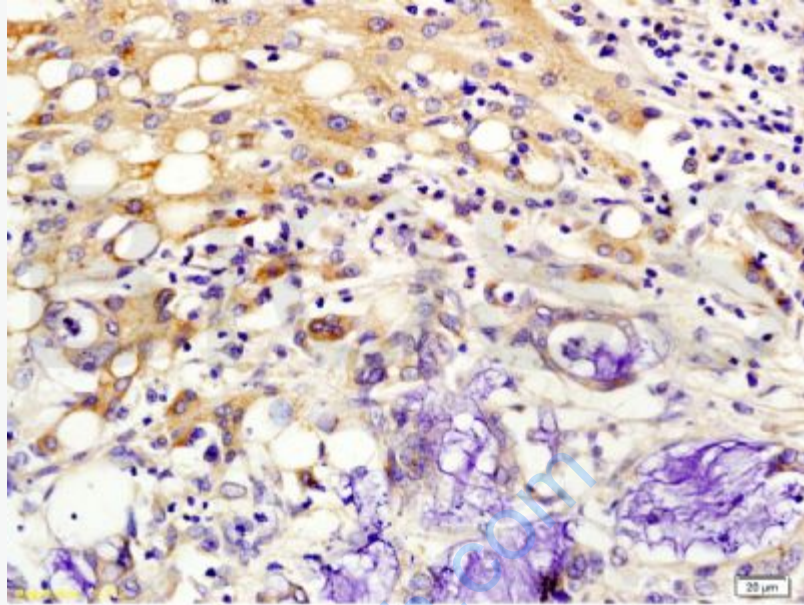


Paraformaldehyde-fixed, paraffin embedded (Rat brain); Antigen retrieval by boiling in sodium citrate buffer (pH6.0) for 15min; Block endogenous peroxidase by 3% hydrogen peroxide for 20 minutes; Blocking buffer (normal goat serum) at 37°C for 30min; Antibody incubation with (Kisspeptin) Polyclonal Antibody, Unconjugated

(SL0749R) at 1:400 overnight at 4°C, followed by operating according to SP Kit(Rabbit) (sp-0023) instructions and DAB staining.



Paraformaldehyde-fixed, paraffin embedded (Mouse brain); Antigen retrieval by boiling in sodium citrate buffer (pH6.0) for 15min; Block endogenous peroxidase by 3% hydrogen peroxide for 20 minutes; Blocking buffer (normal goat serum) at 37°C for 30min; Antibody incubation with (Kisspeptin) Polyclonal Antibody, Unconjugated (SL0749R) at 1:400 overnight at 4°C, followed by operating according to SP Kit(Rabbit) (sp-0023) instructions and DAB staining.



bs-0749R Anti-Kiss 1/Kisspeptin Polyclonal Antibody

Tissue/cell: human colon carcinoma; 4% Paraformaldehyde-fixed and paraffin-embedded
Antigen retrieval: citrate buffer (0.01M, pH 6.0), Boiling bathing for 15min
Block endogenous peroxidase by 3% Hydrogen peroxide for 30min
Blocking buffer (normal goat serum) at 37°C for 20 min
Incubation: Anti-Kiss-1 Polyclonal Antibody, Unconjugated(bs-0749R) 1:200, overnight at 4°C,
followed by conjugation to the secondary antibody and DAB staining