



Rabbit Anti-HLA G antibody

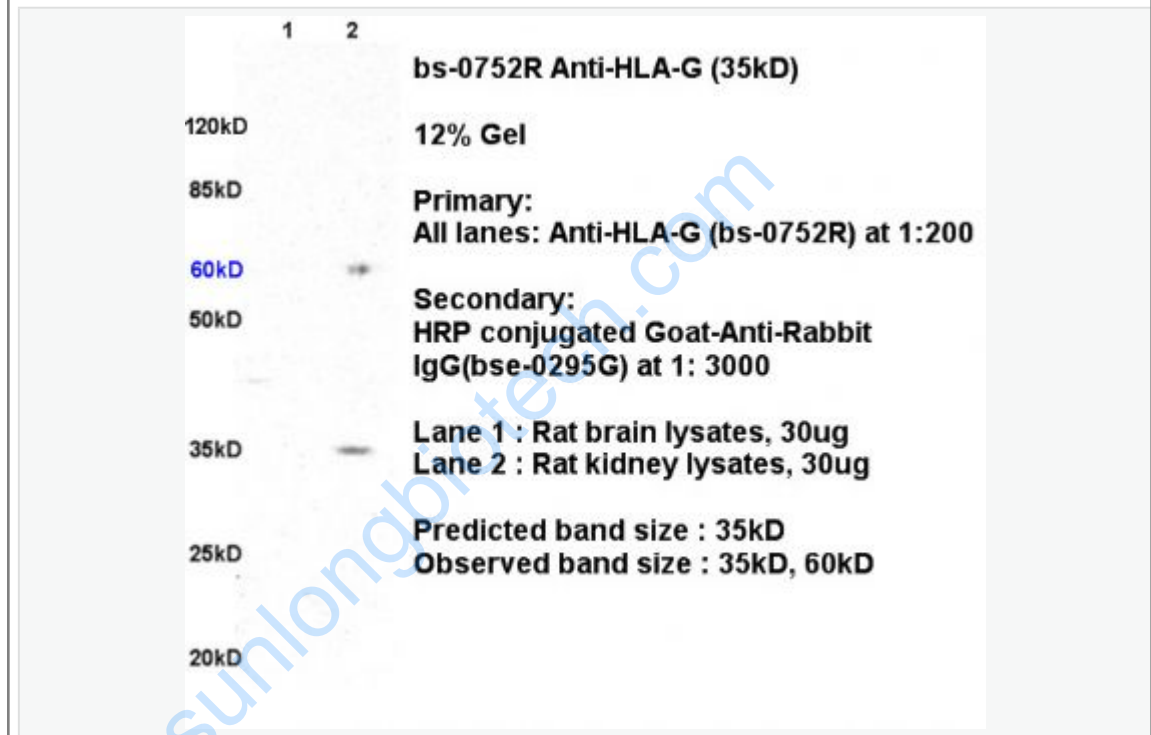
SL0752R

Product Name:	HLA G
Chinese Name:	人类白细胞抗原G抗体
Alias:	B2 microglobulin; DADB-15K14.8; HLA 6.0; HLA 60; HLA class I histocompatibility antigen alpha chain G; HLA class I histocompatibility antigen alpha chain G precursor; HLA class I histocompatibility antigen, alpha chain G; HLA class I molecule; HLA G; HLA G antigen; HLA G histocompatibility antigen class I G; HLA G protein; HLA G2.2; HLA G3; HLA-G; HLA-G histocompatibility antigen, class I; HLA60; HLAG; HLAG_HUMAN; Human Leukocyte Antigen G Histocompatibility Antigen Class 1; Lymphocyte antigen; Major histocompatibility complex class I G; MHC class I antigen; MHC class I antigen G; MHC class Ib antigen; MHC G; Murine homolog of Qa; T Cell A Locus; T-cell A locus; TCA.
Organism Species:	Rabbit
Clonality:	Polyclonal
React Species:	Human,Rat,
Applications:	WB=1:500-2000ELISA=1:500-1000IHC-P=1:400-800IHC-F=1:400-800IF=1:100-500 (Paraffin sections need antigen repair) not yet tested in other applications. optimal dilutions/concentrations should be determined by the end user.
Molecular weight:	35kDa
Cellular localization:	The cell membrane
Form:	Lyophilized or Liquid
Concentration:	1mg/ml
immunogen:	KLH conjugated synthetic peptide derived from the middle of human HLA-G:181-280/338<Extracellular>
Lsotype:	IgG
Purification:	affinity purified by Protein A
Storage Buffer:	0.01M TBS(pH7.4) with 1% BSA, 0.03% Proclin300 and 50% Glycerol.
Storage:	Store at -20 °C for one year. Avoid repeated freeze/thaw cycles. The lyophilized antibody is stable at room temperature for at least one month and for greater than a year when kept at -20°C. When reconstituted in sterile pH 7.4 0.01M PBS or diluent of

	antibody the antibody is stable for at least two weeks at 2-4 °C.
PubMed:	PubMed
Product Detail:	<p>HLA-G belongs to the HLA class I heavy chain paralogues. This class I molecule is a heterodimer consisting of a heavy chain and a light chain (beta-2 microglobulin). The heavy chain is anchored in the membrane. HLA-G is expressed on fetal derived placental cells. The heavy chain is approximately 45 kDa and its gene contains 8 exons. Exon one encodes the leader peptide, exons 2 and 3 encode the alpha1 and alpha2 domain, which both bind the peptide, exon 4 encodes the alpha3 domain, exon 5 encodes the transmembrane region, and exon 6 encodes the cytoplasmic tail. [provided by RefSeq, Jul 2008]</p> <p>Subunit: Heterodimer of an alpha chain and a beta chain (beta-2-microglobulin). Homodimer; disulfide-linked. Binds to LILRB1 and LILRB2.</p> <p>Subcellular Location: Membrane; Single-pass type I membrane protein.</p> <p>Tissue Specificity: Expressed in trophoblasts.</p> <p>Similarity: Belongs to the MHC class I family. Contains 1 Ig-like C1-type (immunoglobulin-like)</p> <p>SWISS: P17693</p> <p>Gene ID: 3135</p> <p>Database links: Entrez Gene: 3135 Human Omim: 142871 Human SwissProt: P17693 Human Unigene: 512152 Human</p> <p>Important Note: This product as supplied is intended for research use only, not for use in human, therapeutic or diagnostic applications.</p>

人类白细胞抗原G/组织相容性白细胞抗原G(Human Leukocyte Antigen-G, HLA-G)是一种非典型的白细胞抗原 I 族组织相容性抗原。该抗原在正常情况下仅在胎盘的绒毛膜表达。在病理情况下HLA-G只在某些癌细胞表达, 在正常组织或良性Tumour则很少表达.因此, HLA-G是一个具有高度Tumour特异性的TumourMaker。近年研究认为HLA—G作为免疫耐受分子, 在Tumour免疫逃逸中可能具有重要作用.

Picture:



Sample:

Brain (Rat) Lysate at 30 ug

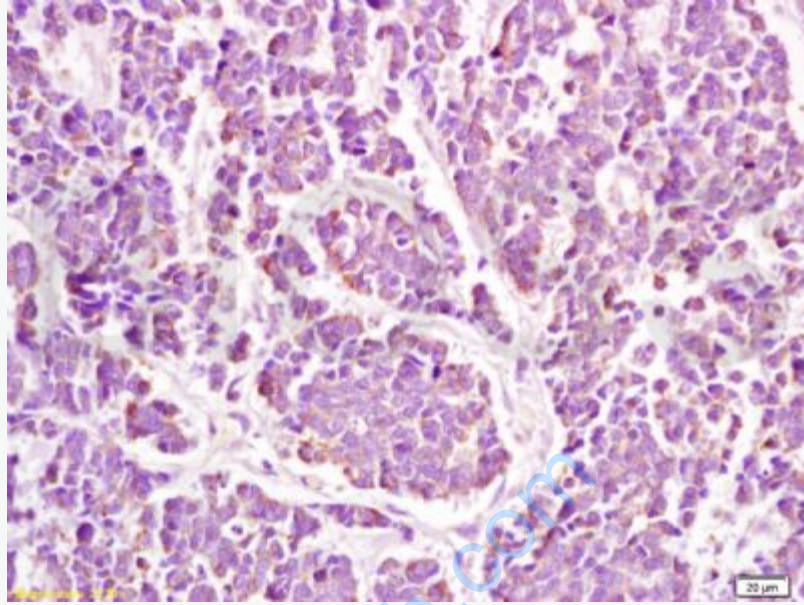
Kidney (Rat) lysate at 30 ug

Primary: Anti- HLA G (SL0752R) at 1/200 dilution

Secondary: HRP conjugated Goat-Anti-rabbit IgG (SL0752R) at 1/3000 dilution

Predicted band size: 35 kD

Observed band size: 35 kD



Tissue/cell: human lung carcinoma; 4% Paraformaldehyde-fixed and paraffin-embedded;

Antigen retrieval: citrate buffer (0.01M, pH 6.0), Boiling bathing for 15min; Block endogenous peroxidase by 3% Hydrogen peroxide for 30min; Blocking buffer (normal goat serum,C-0005) at 37°C for 20 min;

Incubation: Anti-HLA B/HLA G Polyclonal Antibody, Unconjugated(SL0752R) 1:200, overnight at 4°C, followed by conjugation to the secondary antibody(SP-0023) and DAB(C-0010) staining