



## Rabbit Anti-IL12 antibody

SL0767R

<b>Product Name:</b>	IL12
<b>Chinese Name:</b>	白介素12抗体
<b>Alias:</b>	IL12; IL-12; CLMF p35; CLMF1; CTL maturation factor (TeMF); Cytotoxic lymphocyte maturation factor 1; Cytotoxic lymphocyte maturation factor 35 kDa subunit; IL 12 subunit p35; IL12A; Interleukin 12 alpha chain; Interleukin 12 p35; Interleukin 12A; Natural killer cell stimulatory factor 1; CLMF; CLMF p35; Cytotoxic lymphocyte maturation factor 35 kDa subunit; IL-12 subunit p35; IL-12A; IL12 subunit p35; IL12A; IL12A_HUMAN; Interleukin 12 p35; Interleukin 12A; Interleukin-12 subunit alpha; NFSK; NK cell stimulatory factor chain 1; NKSF1. NK cell stimulatory factor chain 1; NKSF1; p35; IL12A_MOUSE.
<b>文献引用</b> PubMed :	<p><b>Specific References(2)</b> SL0767R has been referenced in 2 publications.</p> <p><b>[IF=6.49]</b>Taylor-Fishwick, D. A., et al. "Production and function of IL-12 in islets and beta cells." Diabetologia (2012): 1-10<b>Mouse</b>.  <a href="#">PubMed:23052055</a></p> <p><b>[IF=1.55]</b>Yang, Lijuan, et al. "Effect of IL-17 in the development of colon cancer in mice." Oncology Letters 12.6 (2016): 4929-4936.<b>WB;Mouse</b>.  <a href="#">PubMed:28101230</a></p>
<b>Organism Species:</b>	Rabbit
<b>Clonality:</b>	Polyclonal
<b>React Species:</b>	Mouse,Rat,
<b>Applications:</b>	WB=1:500-2000ELISA=1:500-1000IHC-P=1:400-800IHC-F=1:400-800Flow-Cyt=1µg/TestIF=1:100-500 (Paraffin sections need antigen repair) not yet tested in other applications. optimal dilutions/concentrations should be determined by the end user.
<b>Molecular weight:</b>	22kDa
<b>Cellular localization:</b>	The cell membraneSecretory protein

<b>Form:</b>	Lyophilized or Liquid
<b>Concentration:</b>	1mg/ml
<b>immunogen:</b>	KLH conjugated synthetic peptide derived from mouse IL-12:51-150/215
<b>Lsotype:</b>	IgG
<b>Purification:</b>	affinity purified by Protein A
<b>Storage Buffer:</b>	0.01M TBS(pH7.4) with 1% BSA, 0.03% Proclin300 and 50% Glycerol.
<b>Storage:</b>	Store at -20 °C for one year. Avoid repeated freeze/thaw cycles. The lyophilized antibody is stable at room temperature for at least one month and for greater than a year when kept at -20°C. When reconstituted in sterile pH 7.4 0.01M PBS or diluent of antibody the antibody is stable for at least two weeks at 2-4 °C.
<b>PubMed:</b>	<a href="#">PubMed</a>
<b>Product Detail:</b>	<p>IL-12 protein is a cytokine produced primarily by monocytes and to a lesser extent by lymphocytes. This cytokine has pleiotropic effects in immunoregulation and inflammation. It down-regulates the expression of Th1 cytokines, MHC class II Ags, and costimulatory molecules on macrophages. It also enhances B cell survival, proliferation, and antibody production. This cytokine can block NF-kappa B activity, and is involved in the regulation of the JAK-STAT signaling pathway. Knockout studies in mice suggested the function of this cytokine as an essential immunoregulator in the intestinal tract.</p> <p><b>Function:</b> Cytokine that can act as a growth factor for activated T and NK cells, enhance the lytic activity of NK/lymphokine-activated Killer cells, and stimulate the production of IFN-gamma by resting PBMC.</p> <p><b>Subunit:</b> Heterodimer with IL12B; disulfide-linked. The heterodimer is known as interleukin IL-12.</p> <p><b>Subcellular Location:</b> Secreted.</p> <p><b>Similarity:</b> Belongs to the IL-6 superfamily.</p> <p><b>SWISS:</b> P43431</p> <p><b>Gene ID:</b> 16159</p> <p><b>Database links:</b> <a href="#">Entrez Gene: 3592</a>Human <a href="#">Entrez Gene: 16159</a>Mouse</p>

[Entrez Gene: 84405](#)Rat

[Oimim: 161560](#)Human

[SwissProt: P29459](#)Human

[SwissProt: P43431](#)Mouse

[SwissProt: Q9R103](#)Rat

[Unigene: 673](#)Human

[Unigene: 103783](#)Mouse

[Unigene: 207199](#)Rat

**Important Note:**

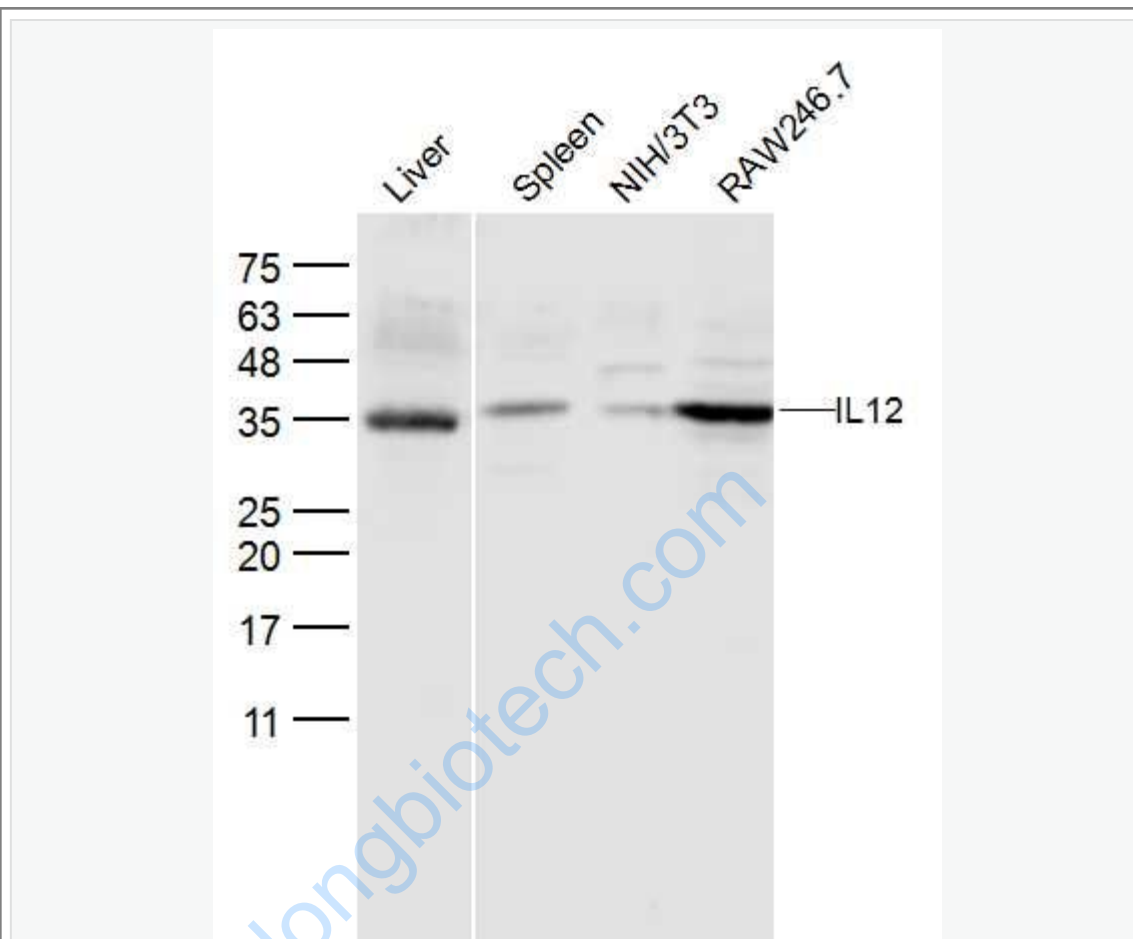
This product as supplied is intended for research use only, not for use in human, therapeutic or diagnostic applications.

IL-12是新近发现的cell

factor, 具有多种生物学活性, 尤其是在抗Tumour免疫和抗病毒免疫中有重要的作用。

www.sunlongbiotech.com

Picture:



Sample:

Liver (Mouse) Lysate at 40 ug

Spleen (Mouse) Lysate at 40 ug

NIH/3T3 (Mouse) CellLysate at 30 ug

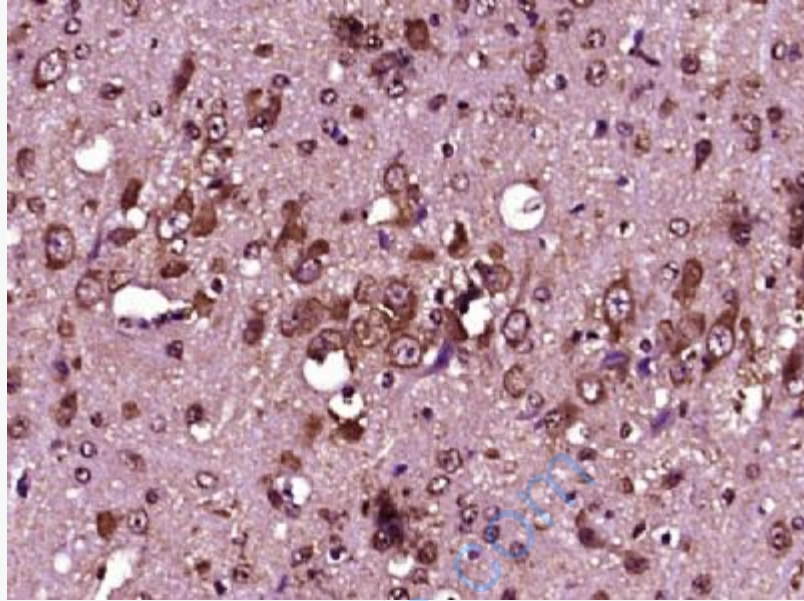
RAW246.7 (Mouse) CellLysate at 30 ug

Primary: Anti- IL12 (SL0767R) at 1/300 dilution

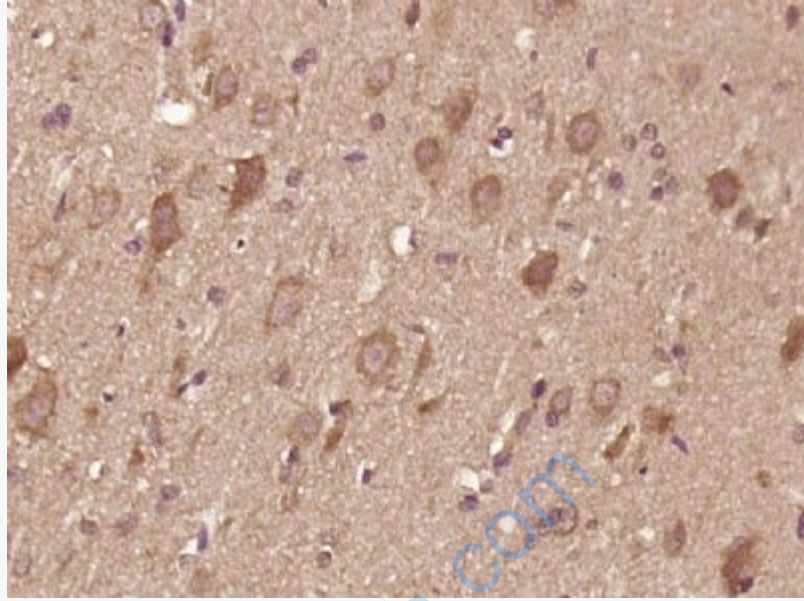
Secondary: IRDye800CW Goat Anti-Rabbit IgG at 1/20000 dilution

Predicted band size: 22 kD

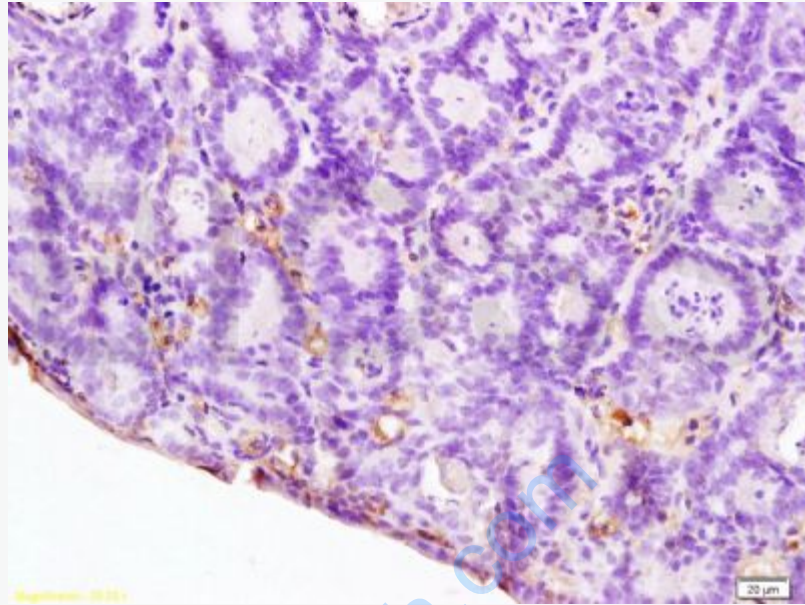
Observed band size: 35/36 kD



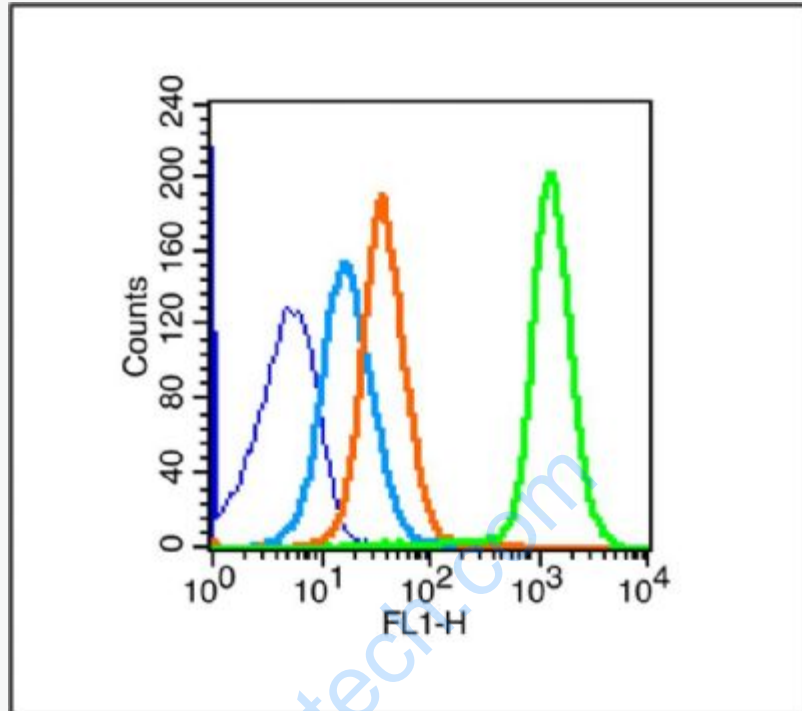
Paraformaldehyde-fixed, paraffin embedded (Mouse brain); Antigen retrieval by boiling in sodium citrate buffer (pH6.0) for 15min; Block endogenous peroxidase by 3% hydrogen peroxide for 20 minutes; Blocking buffer (normal goat serum) at 37°C for 30min; Antibody incubation with (IL12) Polyclonal Antibody, Unconjugated (SL0767R) at 1:400 overnight at 4°C, followed by operating according to SP Kit(Rabbit) (sp-0023) instructions and DAB staining.



Paraformaldehyde-fixed, paraffin embedded (rat brain tissue); Antigen retrieval by boiling in sodium citrate buffer (pH6.0) for 15min; Block endogenous peroxidase by 3% hydrogen peroxide for 20 minutes; Blocking buffer (normal goat serum) at 37°C for 30min; Antibody incubation with (IL12) Polyclonal Antibody, Unconjugated (SL0767R) at 1:400 overnight at 4°C, followed by operating according to SP Kit(Rabbit) (sp-0023) instructions and DAB staining.



Tissue/cell: rat colitis tissue; 4% Paraformaldehyde-fixed and paraffin-embedded;  
Antigen retrieval: citrate buffer ( 0.01M, pH 6.0 ), Boiling bathing for 15min; Block endogenous peroxidase by 3% Hydrogen peroxide for 30min; Blocking buffer (normal goat serum,C-0005) at 37°C for 20 min;  
Incubation: Anti-IL-12 Polyclonal Antibody, Unconjugated(SL0767R) 1:200, overnight at 4°C, followed by conjugation to the secondary antibody(SP-0023) and DAB(C-0010) staining



Blank control (blue line): Mouse spleen (blue).

Primary Antibody (green line): Rabbit Anti- IL12 antibody (SL0767R)

Dilution: 1µg /10<sup>6</sup> cells;

Isotype Control Antibody (orange line): Rabbit IgG .

Secondary Antibody (white blue line): Goat anti-rabbit IgG-FITC

Dilution: 1µg /test.

#### Protocol

The cells were fixed with 70% ice-cold methanol overnight at 4°C. Cells stained with Primary Antibody for 30 min at room temperature. The cells were then incubated in 1 X PBS/2%BSA/10% goat serum to block non-specific protein-protein interactions followed by the antibody for 15 min at room temperature. The secondary antibody used for 40 min at room temperature. Acquisition of 20,000 events was performed.



