



Rabbit Anti-phospho-FSCN1 (Ser39) antibody

SL0772R

Product Name:	phospho-FSCN1 (Ser39)
Chinese Name:	磷酸化纤维束蛋白同源物1抗体
Alias:	Fascin (phospho Ser39); Fascin (phospho S39); 55 kDa actin bundling protein; Actin bundling protein; FAN 1; FAN1; Fascin 1; Fascin homolog 1 actin bundling protein (Strongylocentrotus purpuratus); Fascin homolog 1; Fascin1; FLJ38511; FSCN 1; FSCN1; HSN; p55; Singed (Drosophila) like (sea urchin fascin homolog like); Singed drosophila homolog like; Singed like (fascin homolog sea urchin) (Drosophila); Singed like protein; SNL; Strongylocentrotus purpuratus.
文献引用 PubMed :	<p>Specific References(2) SL0772R has been referenced in 2 publications.</p> <p>[IF=3.73]Majchrzak K, Lo Re D, Gajewska M, Bulkowska M, Homa A, et al. (2013) Migrastatin Analogues Inhibit Canine Mammary Cacer Cell Migrationand Invasion. PLoS ONE 8(10): e76789Dog. PubMed:24116159</p> <p>[IF=3.31]Król, Magdalena, et al. "Macrophages Mediate a Switch between Canonical and Non-Canonical Wnt Pathways in Canine Mammary Tumors." PloS one 9.1 (2014): e83995.Dog. PubMed:24404146</p>
Organism Species:	Rabbit
Clonality:	Polyclonal
React Species:	Human,Mouse,Rat,Dog,Pig,
Applications:	WB=1:500-2000ELISA=1:500-1000IHC-P=1:400-800IHC-F=1:400-800Flow-Cyt=3µg/TestIF=1:100-500 (Paraffin sections need antigen repair) not yet tested in other applications. optimal dilutions/concentrations should be determined by the end user.
Molecular weight:	55kDa

Cellular localization:	cytoplasmic
Form:	Lyophilized or Liquid
Concentration:	1mg/ml
immunogen:	KLH conjugated Synthesised phosphopeptide derived from human FSCN1 around the phosphorylation site of Ser39:AS(p-S)LK
Lsotype:	IgG
Purification:	affinity purified by Protein A
Storage Buffer:	0.01M TBS(pH7.4) with 1% BSA, 0.03% Proclin300 and 50% Glycerol.
Storage:	Store at -20 °C for one year. Avoid repeated freeze/thaw cycles. The lyophilized antibody is stable at room temperature for at least one month and for greater than a year when kept at -20°C. When reconstituted in sterile pH 7.4 0.01M PBS or diluent of antibody the antibody is stable for at least two weeks at 2-4 °C.
PubMed:	PubMed
Product Detail:	<p>Human fascin is a highly conserved actin-bundling protein. Fascin, encoded by the human homolog for sn (hsn) gene, has been localized to microspikes and stress fibers of cultured cells where it is thought to be involved in the formation of microfilament bundles. It is expressed predominantly in dendritic cells. Lymphoid cells, myeloid cells and plasma cells are negative. However, Reed Sternberg cells in Hodgkin's lymphoma are positive for fascin staining. Epstein-Barr virus may induce expression of fascin in B cells.</p> <p>Function: Organizes filamentous actin into bundles with a minimum of 4.1:1 actin/fascin ratio. Plays a role in the organization of actin filament bundles and the formation of microspikes, membrane ruffles, and stress fibers. Important for the formation of a diverse set of cell protrusions, such as filopodia, and for cell motility and migration.</p> <p>Subcellular Location: Cytoplasm > cytoskeleton. Cell projection > filopodium. Cell projection > invadopodium.</p> <p>Tissue Specificity: Ubiquitous.</p> <p>Post-translational modifications: Phosphorylation on Ser-39 inhibits the actin-binding ability of fascin.</p> <p>Similarity: Belongs to the fascin family.</p> <p>SWISS: Q16658</p> <p>Gene ID: 6624</p>

Database links:

[Entrez Gene: 6624](#)Human

[Entrez Gene: 14086](#)Mouse

[Entrez Gene: 683788](#)Rat

[Olim: 602689](#)Human

[SwissProt: Q16658](#)Human

[SwissProt: Q61553](#)Mouse

[SwissProt: P85845](#)Rat

[Unigene: 118400](#)Human

[Unigene: 289707](#)Mouse

[Unigene: 199526](#)Rat

Important Note:

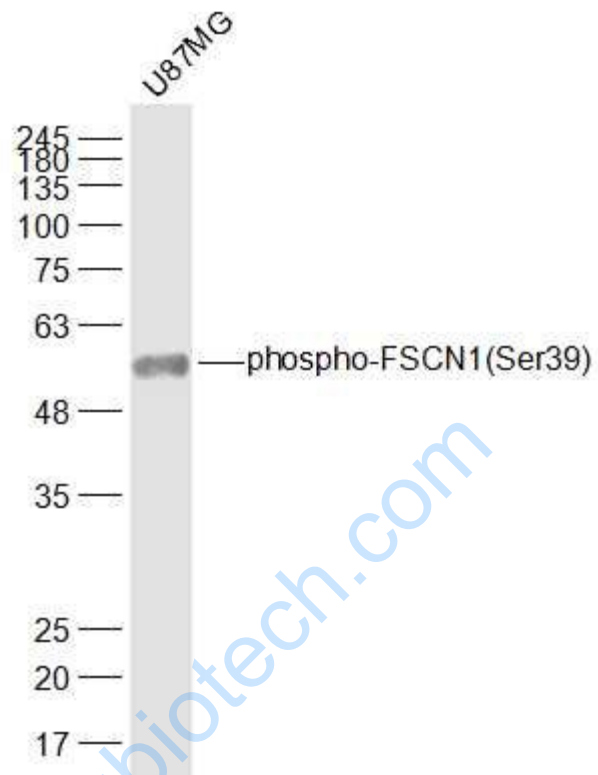
This product as supplied is intended for research use only, not for use in human, therapeutic or diagnostic applications.

肌动蛋白集束蛋白/圆线虫紫癜抗体。

FSCN1为Cytoskeleton肌动蛋白的一种, 该蛋白有蛋白结合,桥连、肌动蛋白丝结合的功能。

主要参与细胞增殖、肌动蛋白Cytoskeleton组织和生物发生、肌动蛋白丝束形成。<

Picture:



Sample:

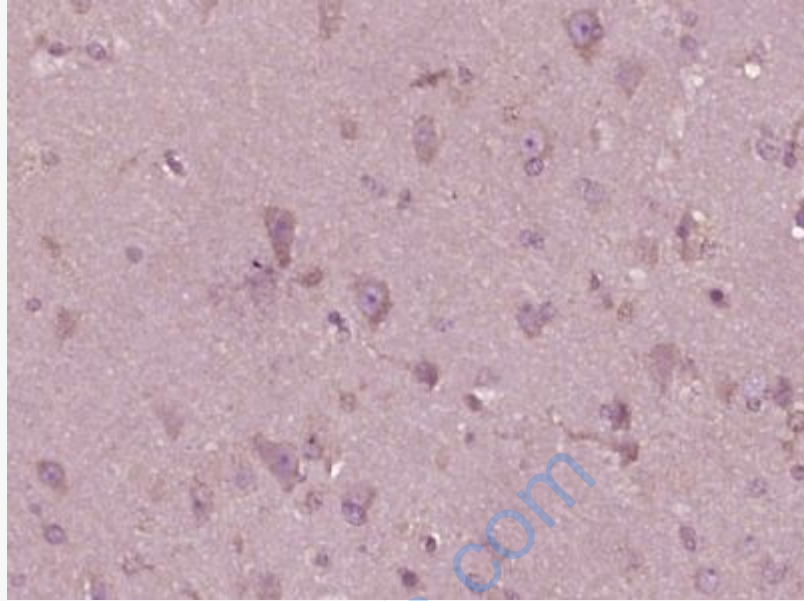
U87MG(Human) Cell Lysate at 30 ug

Primary: Anti-phospho-FSCN1(Ser39) (SL0772R) at 1/1000 dilution

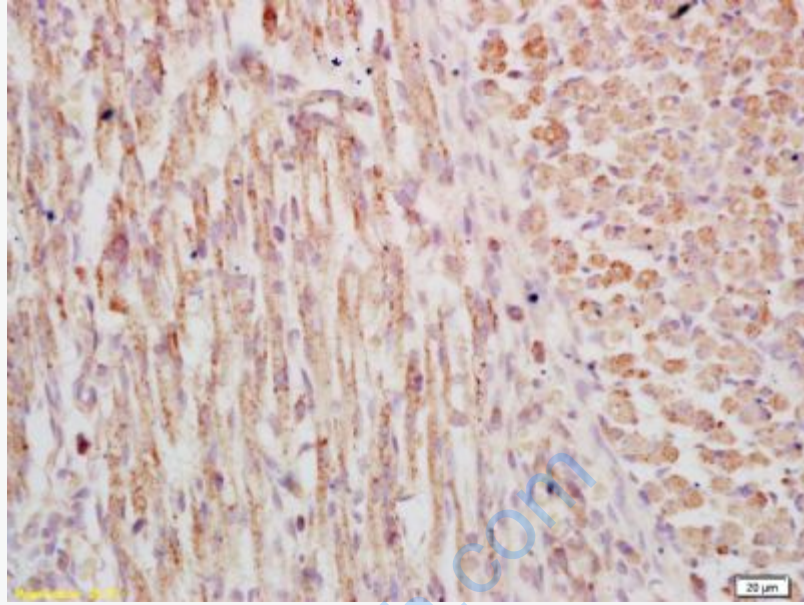
Secondary: IRDye800CW Goat Anti-Rabbit IgG at 1/20000 dilution

Predicted band size: 55 kD

Observed band size: 55 kD



Paraformaldehyde-fixed, paraffin embedded (human brain glioma); Antigen retrieval by boiling in sodium citrate buffer (pH6.0) for 15min; Block endogenous peroxidase by 3% hydrogen peroxide for 20 minutes; Blocking buffer (normal goat serum) at 37°C for 30min; Antibody incubation with (FSCN1(Ser39)) Polyclonal Antibody, Unconjugated (SL0772R) at 1:400 overnight at 4°C, followed by operating according to SP Kit(Rabbit) (sp-0023) instructions and DAB staining.

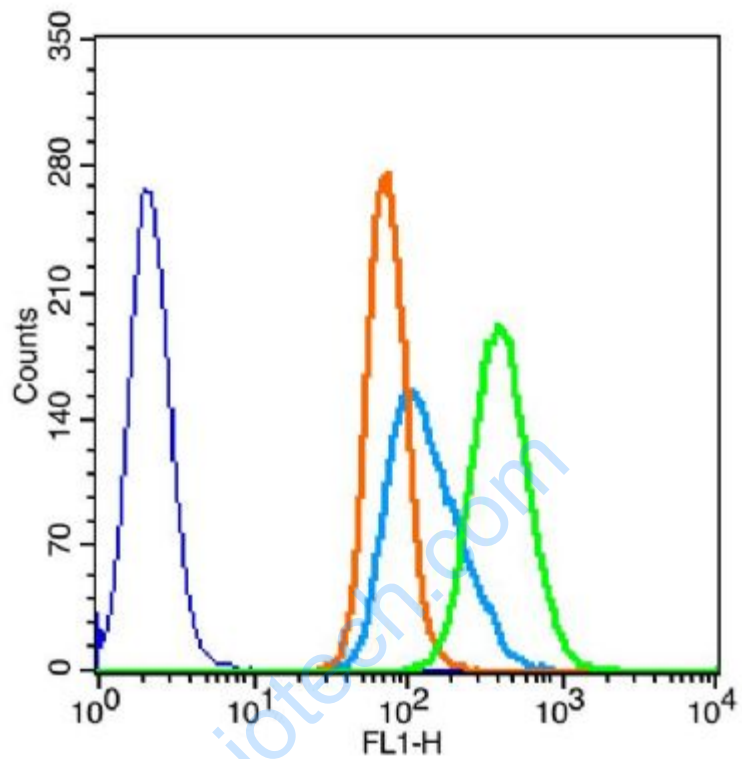


Tissue/cell: muscle of mouse embryo; 4% Paraformaldehyde-fixed and paraffin-embedded;

Antigen retrieval: citrate buffer (0.01M, pH 6.0), Boiling bathing for 15min; Block endogenous peroxidase by 3% Hydrogen peroxide for 30min; Blocking buffer (normal goat serum,C-0005) at 37°C for 20 min;

Incubation: Anti-phospho-FSCN1(Ser39) Polyclonal Antibody,

Unconjugated(SL0772R) 1:200, overnight at 4°C, followed by conjugation to the secondary antibody(SP-0023) and DAB(C-0010) staining



Blank control: U937(blue)

Isotype Control Antibody: Rabbit IgG(orange) ; Secondary Antibody: Goat anti-rabbit IgG-FITC(white blue), Dilution: 1:100 in 1 X PBS containing 0.5% BSA ;

Primary Antibody Dilution: 3 μ l in 100 μ L1X PBS containing 0.5% BSA(green).