



## Rabbit Anti-FAM3A antibody

SL0773R

|                               |   |
|-------------------------------|---|
| <b>Product Name:</b>          | FAM3A   |
| <b>Chinese Name:</b>          | 胰腺衍生因子抗体  |
| <b>Alias:</b>                 | C21orf11; Cytokine like protein 2 21; PRED44; PANcreatic DERived factor; Protein FAM3B; Protein FAM3B precursor; Family with sequence similarity 3, member B isoform a; FAM3A_HUMAN; Protein FAM3A; Cytokine-like protein 2-19.   |
| <b>Organism Species:</b>      | Rabbit  |
| <b>Clonality:</b>             | Polyclonal  |
| <b>React Species:</b>         | Human,Mouse,Rat,  |
| <b>Applications:</b>          | WB=1:500-2000ELISA=1:500-1000IHC-P=1:400-800IHC-F=1:400-800IF=1:100-500 (Paraffin sections need antigen repair)<br>not yet tested in other applications.<br>optimal dilutions/concentrations should be determined by the end user.  |
| <b>Molecular weight:</b>      | 26kDa   |
| <b>Cellular localization:</b> | The nucleusSecretory protein  |
| <b>Form:</b>                  | Lyophilized or Liquid   |
| <b>Concentration:</b>         | 1mg/ml  |
| <b>immunogen:</b>             | KLH conjugated synthetic peptide derived from human FAM3A:151-230/230   |
| <b>Lsotype:</b>               | IgG   |
| <b>Purification:</b>          | affinity purified by Protein A  |
| <b>Storage Buffer:</b>        | 0.01M TBS(pH7.4) with 1% BSA, 0.03% Proclin300 and 50% Glycerol.  |
| <b>Storage:</b>               | Store at -20 °C for one year. Avoid repeated freeze/thaw cycles. The lyophilized antibody is stable at room temperature for at least one month and for greater than a year when kept at -20°C. When reconstituted in sterile pH 7.4 0.01M PBS or diluent of antibody the antibody is stable for at least two weeks at 2-4 °C. |
| <b>PubMed:</b>                | <a href="#">PubMed</a>  |
| <b>Product Detail:</b>        | FAM3A (Family with sequence similarity 3, member A; MGC143089), [SUBCELLULAR LOCATION] Secreted. [TISSUE SPECIFICITY] In similar amounts in testis, pancreas, adrenal, placenta, brain, fetal brain, liver, kidney, skeletal muscle and heart. Belongs to the FAM3 family.  |

**Function:**

May act as a defensin against invading fungal microorganisms.

**Subcellular Location:**

Secreted (Potential).

**Tissue Specificity:**

In similar amounts in testis, pancreas, adrenal, placenta, brain, fetal brain, liver, kidney, skeletal muscle and heart.

**Similarity:**

Belongs to the FAM3 family.

**SWISS:**

P98173

**Gene ID:**

60343

**Database links:**

[Entrez Gene: 60343](#)Human

[Entrez Gene: 501664](#)Rat

[Omir: 300492](#)Human

[SwissProt: P98173](#)Human

[Unigene: 289108](#)Human

**Important Note:**

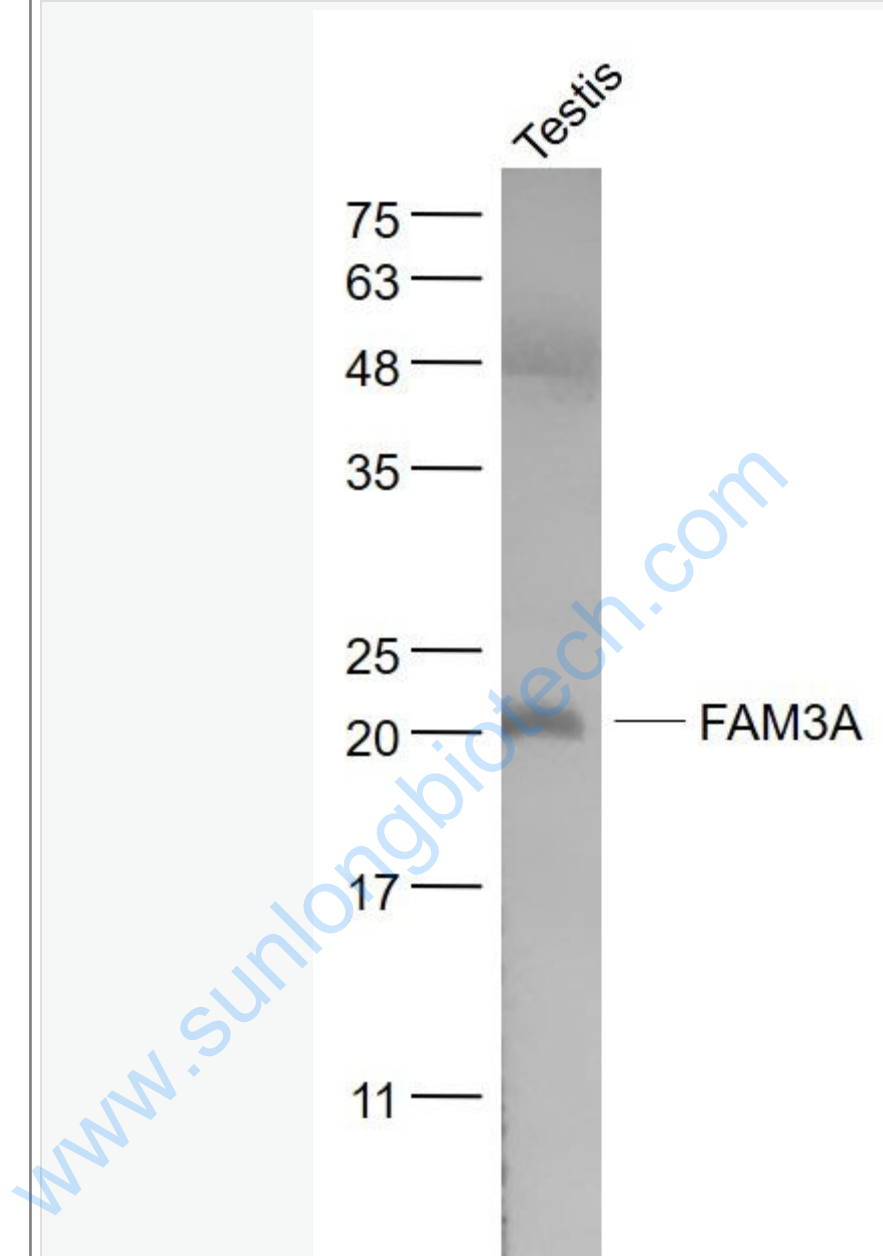
This product as supplied is intended for research use only, not for use in human, therapeutic or diagnostic applications.

胰腺衍生因子(FAM3A)是新发现的一种新型的胰岛cell

factor、由胰岛 $\alpha$ 细胞和 $\beta$ 细胞分泌的一种分泌型cell

factor, 与 $\beta$ Apoptosis密切相关, 可以诱导胰岛素分泌 $\beta$ 细胞, 主要用于Diabetes的研究。

Picture:



Sample:

Testis (Mouse) Lysate at 40 ug

Primary: Anti- FAM3A (SL0773R) at 1/1000 dilution

Secondary: IRDye800CW Goat Anti-Rabbit IgG at 1/20000 dilution

Predicted band size: 26 kD

|  |                           |
|--|---------------------------|
|  | Observed band size: 20 kD |
|--|---------------------------|

[www.sunlongbiotech.com](http://www.sunlongbiotech.com)