



## Rabbit Anti-Claudin 1 antibody

SL0790R

<b>Product Name:</b>	Claudin 1
<b>Chinese Name:</b>	紧密连接蛋白1抗体(C端)
<b>Alias:</b>	claudin; Claudin1; CLD 1; CLD1; CLDN 1; CLDN1; ILVASC; SEMP 1; SEMP1; Senescence associated epithelial membrane protein 1; Senescence associated epithelial membrane protein; CLD1_HUMAN.
<b>Organism Species:</b>	Rabbit
<b>Clonality:</b>	Polyclonal
<b>React Species:</b>	Human,Mouse,Rat,Dog,Pig,Horse,Sheep,
<b>Applications:</b>	WB=1:500-2000ELISA=1:500-1000Flow-Cyt=1 $\mu$ g /test not yet tested in other applications. optimal dilutions/concentrations should be determined by the end user.
<b>Molecular weight:</b>	23kDa
<b>Cellular localization:</b>	The cell membrane
<b>Form:</b>	Lyophilized or Liquid
<b>Concentration:</b>	1mg/ml
<b>immunogen:</b>	KLH conjugated synthetic peptide derived from human Claudin 1:121-211/211<Cytoplasmic>
<b>Lsotype:</b>	IgG
<b>Purification:</b>	affinity purified by Protein A
<b>Storage Buffer:</b>	0.01M TBS(pH7.4) with 1% BSA, 0.03% Proclin300 and 50% Glycerol.
<b>Storage:</b>	Store at -20 °C for one year. Avoid repeated freeze/thaw cycles. The lyophilized antibody is stable at room temperature for at least one month and for greater than a year when kept at -20°C. When reconstituted in sterile pH 7.4 0.01M PBS or diluent of antibody the antibody is stable for at least two weeks at 2-4 °C.
<b>PubMed:</b>	<a href="#">PubMed</a>
<b>Product Detail:</b>	Tight junctions represent one mode of cell-to-cell adhesion in epithelial or endothelial cell sheets, forming continuous seals around cells and serving as a physical barrier to prevent solutes and water from passing freely through the paracellular space. These junctions are comprised of sets of continuous networking strands in the outwardly facing cytoplasmic leaflet, with complementary grooves in the inwardly facing

extracytoplasmic leaflet. The protein encoded by this gene, a member of the claudin family, is an integral membrane protein and a component of tight junction strands. Loss of function mutations result in neonatal ichthyosis-sclerosing cholangitis syndrome. [provided by RefSeq].

**Function:**

Plays a major role in tight junction-specific obliteration of the intercellular space, through calcium-independent cell-adhesion activity.

**Subunit:**

Can form homo- and heteropolymers with other CLDN. Homopolymers interact with CLDN3, but not CLDN2, homopolymers. Directly interacts with TJP1/ZO-1, TJP2/ZO-2 and TJP3/ZO-3. Interacts with MPDZ and INADL.

**Subcellular Location:**

Cell junction, tight junction. Cell membrane; Multi-pass membrane protein.

**Tissue Specificity:**

Widely expressed, with highest levels in liver and kidney.

**Similarity:**

Belongs to the claudin family.

**SWISS:**

O95832

**Gene ID:**

9076

**Database links:**

[Entrez Gene: 9076](#)Human

[Entrez Gene: 12737](#)Mouse

[Entrez Gene: 65129](#)Rat

[Omim: 603718](#)Human

[SwissProt: O95832](#)Human

[SwissProt: O88551](#)Mouse

[SwissProt: P56745](#)Rat

[Unigene: 439060](#)Human

[Unigene: 289441](#)Mouse

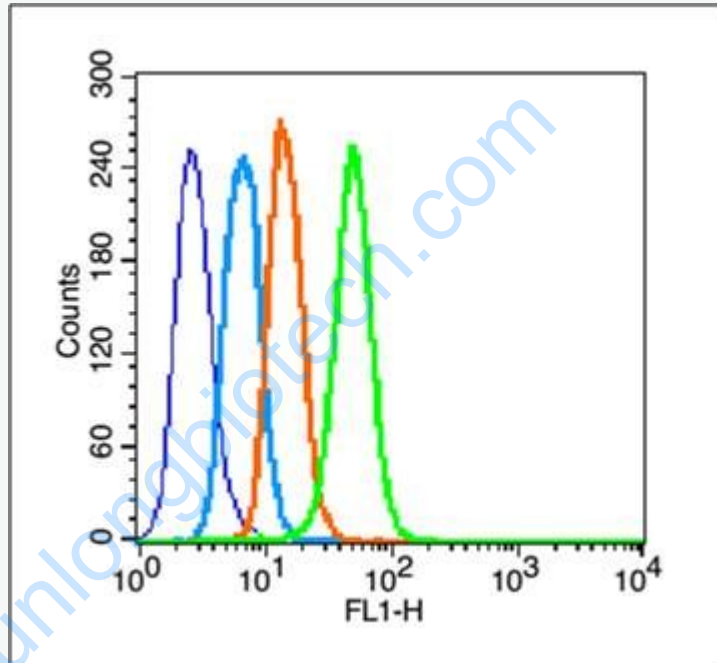
[Unigene: 24293](#)Rat

**Important Note:**

This product as supplied is intended for research use only, not for use in human, therapeutic or diagnostic applications.

**Claudin**

1 蛋白是紧密连接区相关的转膜蛋白Claudin的家族成员，在构成紧密连接的完整膜蛋白中发挥着一定作用，目前多用于Tumour方面的研究。



**Picture:**

Blank control (blue line): A431 (blue).

Primary Antibody (green line): Rabbit Anti- Claudin 1 antibody (SL0790R)

Dilution: 1 $\mu$ g /10<sup>6</sup> cells;

Isotype Control Antibody (orange line): Rabbit IgG .

Secondary Antibody (white blue line): Goat anti-rabbit IgG-FITC

Dilution: 1 $\mu$ g /test.

**Protocol**

The cells were fixed with 2% paraformaldehyde for 10 min at room temperature.

Cells stained with Primary Antibody for 30 min at room temperature. The cells were

then incubated in 1 X PBS/2%BSA/10% goat serum to block non-specific protein-protein interactions followed by the antibody for 15 min at room temperature. The secondary antibody used for 40 min at room temperature. Acquisition of 20,000 events was performed.