



Rabbit Anti-Fibulin 5 antibody

SL0810R

Product Name:	Fibulin 5
Chinese Name:	衰老关键蛋白抗体
Alias:	ARMD3; Dance; Developmental arteries and neural crest EGF like protein; FBLN5; FIBL 5; Developmental arteries and neural crest EGF-like protein; EVEC; Fbln5; FBLN5_HUMAN; UP50; FIBL 5; FIBL-5; Fibulin-5; FLJ90059; Urine p50 protein.
Organism Species:	Rabbit
Clonality:	Polyclonal
React Species:	Human,Mouse,Rat,Cow,
Applications:	WB=1:500-2000ELISA=1:500-1000 not yet tested in other applications. optimal dilutions/concentrations should be determined by the end user.
Molecular weight:	48kDa
Cellular localization:	Secretory protein
Form:	Lyophilized or Liquid
Concentration:	1mg/ml
immunogen:	KLH conjugated synthetic peptide derived from human Fibulin 5:101-200/448
Lsotype:	IgG
Purification:	affinity purified by Protein A
Storage Buffer:	0.01M TBS(pH7.4) with 1% BSA, 0.03% Proclin300 and 50% Glycerol.
Storage:	Store at -20 °C for one year. Avoid repeated freeze/thaw cycles. The lyophilized antibody is stable at room temperature for at least one month and for greater than a year when kept at -20°C. When reconstituted in sterile pH 7.4 0.01M PBS or diluent of antibody the antibody is stable for at least two weeks at 2-4 °C.
PubMed:	PubMed
Product Detail:	Fibulin 5: A protein that belongs to a family of extracellular proteins expressed in the basement membranes of blood vessels. Fibulin 5 may be essential for the polymerization of elastin. Missense mutations in FBLN5, the gene that encodes fibulin 5, appear responsible for 1-2% of cases of age-related macular degeneration (AMD). FBLN5 is located on chromosome 14 in band 14q32.1. See also: Fibulin 3. May play a role in vascular growth and maturation during development and in lesions of injured vessels.

Function:

Promotes adhesion of endothelial cells through interaction of integrins and the RGD motif. Could be a vascular ligand for integrin receptors and may play a role in vascular development and remodeling.

Subunit:

Homodimer.

Subcellular Location:

Secreted.

Tissue Specificity:

Expressed predominantly in heart, ovary, and colon but also in kidney, pancreas, testis, lung and placenta. Not detectable in brain, liver, thymus, prostate, or peripheral blood leukocytes.

DISEASE:

Cutis laxa, autosomal dominant, 2 (ADCL2) [MIM:614434]: A connective tissue disorder characterized by loose, hyperextensible skin with decreased resilience and elasticity leading to a premature aged appearance. Face, hands, feet, joints, and torso may be differentially affected. Additional variable clinical features are gastrointestinal diverticula, hernia, and genital prolapse. Rare manifestations are pulmonary artery stenosis, aortic aneurysm, bronchiectasis, and emphysema. Note=The disease is caused by mutations affecting the gene represented in this entry.

Cutis laxa, autosomal recessive, 1A (ARCL1A) [MIM:219100]: A connective tissue disorder characterized by loose, hyperextensible skin with decreased resilience and elasticity leading to a premature aged appearance. Face, hands, feet, joints, and torso may be differentially affected. The clinical spectrum of autosomal recessive cutis laxa is highly heterogeneous with respect to organ involvement and severity. Type I autosomal recessive cutis laxa is a specific, life-threatening disorder with organ involvement, lung atelectasis and emphysema, diverticula of the gastrointestinal and genitourinary systems, and vascular anomalies. Associated cranial anomalies, late closure of the fontanel, joint laxity, hip dislocation, and inguinal hernia have been observed but are uncommon.

Note=The disease is caused by mutations affecting the gene represented in this entry.

Age-related macular degeneration 3 (ARMD3) [MIM:608895]: A form of age-related macular degeneration, a multifactorial eye disease and the most common cause of irreversible vision loss in the developed world. In most patients, the disease is manifest as ophthalmoscopically visible yellowish accumulations of protein and lipid that lie beneath the retinal pigment epithelium and within an elastin-containing structure known as Bruch membrane. Note=Disease susceptibility is associated with variations affecting the gene represented in this entry.

Similarity:

Belongs to the fibulin family.

Contains 6 EGF-like domains.

SWISS:
Q9UBX5

Gene ID:
10516

Database links:

[Entrez Gene: 10516](#)Human

[Entrez Gene: 23876](#)Mouse

[Omir: 604580](#)Human

[SwissProt: Q9UBX5](#)Human

[SwissProt: Q9WVH9](#)Mouse

[Unigene: 332708](#)Human

[Unigene: 288381](#)Mouse

Important Note:

This product as supplied is intended for research use only, not for use in human, therapeutic or diagnostic applications.

Fibulin-5 Fibulin-5亦称为FBLN-5、DANCE或EVEC是Extracellular matrix蛋白质家族的一员, 在组织器官发育、重塑和修复过程中起重要作用, 并与endothelial cells相互作用.Fibulin-5广泛分布于富含弹性蛋白的组织, 能直接与原弹性蛋白结合,并将后者锚于细胞表面,这对形成弹性纤维十分关键, 对血管的发育和修复具有重要作用.此外,Fibulin-5还能促进创口愈合, 与细胞的增殖、运动和侵袭有关

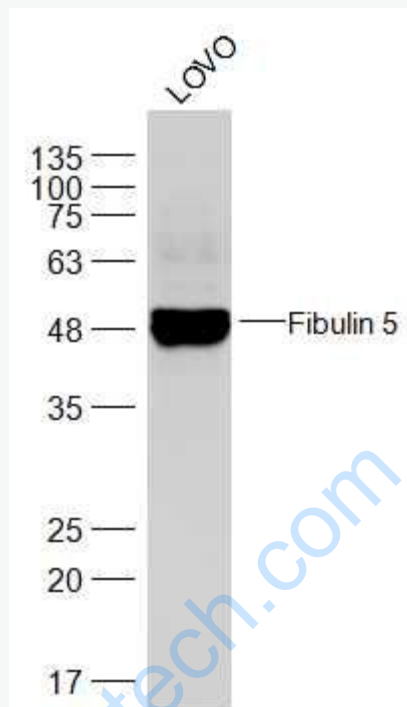
fibulin-

5有学者称“皮肤衰老关键蛋白”与皮肤弹性有关的蛋白, 对于起着固定细胞外壁、保持肌肤紧绷、维护肺部和血管柔韧性作用的弹性纤维的发育十分关键.

还有学者认为: fibulin-

5能够抑制血管的形成, 该蛋白质在Tumour转移过程中表达降低或消失, 将有可能用于Tumour治疗方面的研究。

Picture:



Sample:

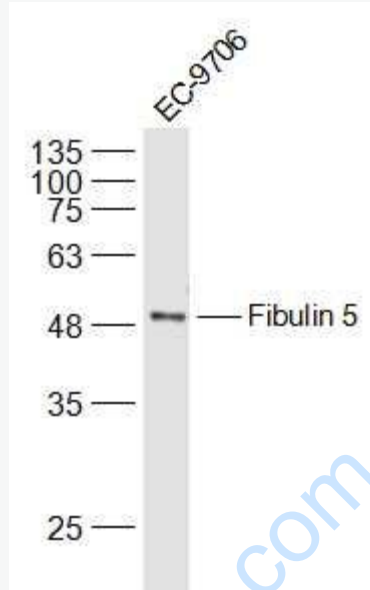
LOVO(Human) Cell Lysate at 30 ug

Primary: Anti-Fibulin 5 (SL0810R) at 1/500 dilution

Secondary: IRDye800CW Goat Anti-Rabbit IgG at 1/20000 dilution

Predicted band size: 48 kD

Observed band size: 48 kD



Sample:

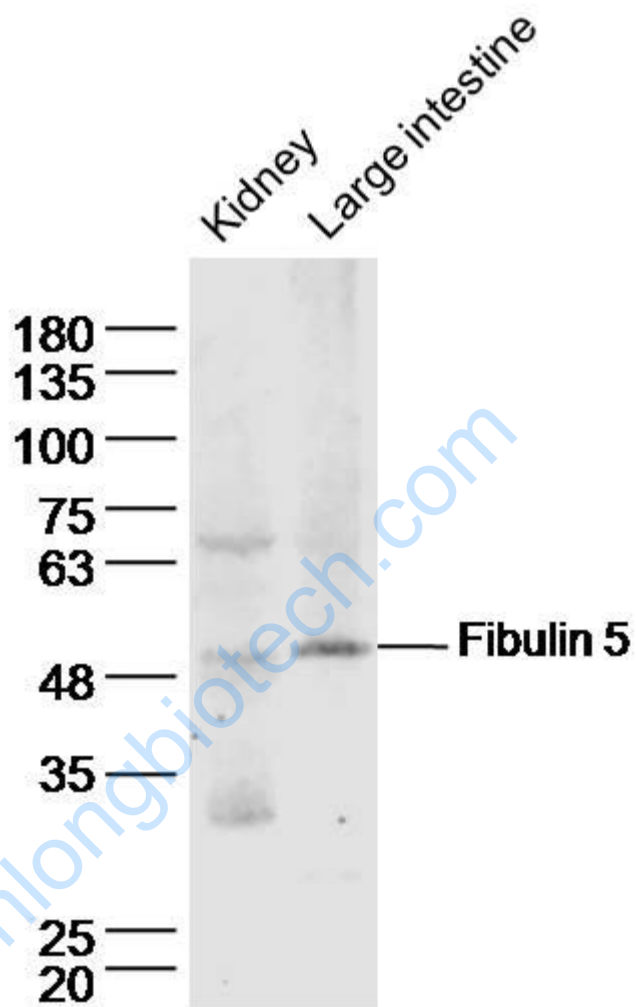
EC-9706(Human) Cell Lysate at 30 ug

Primary: Anti-Fibulin 5 (SL0810R) at 1/500 dilution

Secondary: IRDye800CW Goat Anti-Rabbit IgG at 1/20000 dilution

Predicted band size: 48 kD

Observed band size: 48 kD



Sample:

kidney (mouse) Lysate at 40 ug

large intestine (rat) Lysate at 40 ug

Primary: Anti- Fibulin 5 (SL0810R) at 1/300 dilution

Secondary: IRDye800CW Goat Anti-Rabbit IgG at 1/20000 dilution

Predicted band size: 48kD

Observed band size: 50 kD

120kD

85kD

50kD

35kD

25kD

20kD

1

2

Sample:

Brain(Rat) lysate at 30ug;

Colon carcinoma(Human) lysate at 30ug;

Primary: Anti-Fibulin 5 (SL0810R) at 1:200 dilution;

Secondary: HRP conjugated Goat-Anti-Rabbit IgG(SL0810R) at 1: 3000 dilution;

Predicted band size : 48kD

Observed band size : 50kD