



## Rabbit Anti-CX3CL1 antibody

SL0811R

<b>Product Name:</b>	CX3CL1
<b>Chinese Name:</b>	CX3CL1抗体
<b>Alias:</b>	C3Xkine; Chemokine C X3 C motif ligand 1; Chemokine CX3C Motif Ligand 1; CX3C membrane anchored chemokine; CXC 3; CXC3; CXC3C; FKN; Fractalkine; Neurotactin; NTN; NTT; SCYD 1; SCYD1; Small inducible cytokine D1; Small inducible cytokine subfamily D (Cys X3 Cys) member 1; Small inducible cytokine subfamily D member 1; X3CL1_HUMAN.
<b>文献引用</b> <b>PubMed</b> :	<p><b>Specific References(1)</b>SL0811R has been referenced in 1 publications.</p> <p><b>[IF=2.89]</b>Xie, Wu-Ling, et al. "Abnormal Activation of Microglia Accompanied with Disrupted CX3CR1/CX3CL1 Pathway in the Brains of the Hamsters Infected with Scrapie Agent 263K." Journal of Molecular Neuroscience (2013): 1-14.<b>WB</b>;</p> <p><a href="#">PubMed:23526370</a></p>
<b>Organism Species:</b>	Rabbit
<b>Clonality:</b>	Polyclonal
<b>React Species:</b>	Human,Mouse,Rat,
<b>Applications:</b>	ELISA=1:500-1000IHC-P=1:400-800IHC-F=1:400-800ICC=1:100-500IF=1:100-500 (Paraffin sections need antigen repair) not yet tested in other applications. optimal dilutions/concentrations should be determined by the end user.
<b>Molecular weight:</b>	41kDa
<b>Cellular localization:</b>	The cell membraneSecretory protein
<b>Form:</b>	Lyophilized or Liquid
<b>Concentration:</b>	1mg/ml
<b>immunogen:</b>	KLH conjugated synthetic peptide derived from human CX3CL1:301-397/397<Extracellular>
<b>Lsotype:</b>	IgG
<b>Purification:</b>	affinity purified by Protein A

<b>Storage Buffer:</b>	0.01M TBS(pH7.4) with 1% BSA, 0.03% Proclin300 and 50% Glycerol.
<b>Storage:</b>	Store at -20 °C for one year. Avoid repeated freeze/thaw cycles. The lyophilized antibody is stable at room temperature for at least one month and for greater than a year when kept at -20°C. When reconstituted in sterile pH 7.4 0.01M PBS or diluent of antibody the antibody is stable for at least two weeks at 2-4 °C.
<b>PubMed:</b>	<a href="#">PubMed</a>
<b>Product Detail:</b>	<p>CX3CL1 is a member of the delta chemokine subfamily that contains a unique CX3C cysteine motif near the N-terminal. Unlike other known chemokines, it is a type 1 membrane protein containing a chemokine domain tethered on a long mucin-like stalk. CX3CL1, a leukocyte chemoattractant, is expressed in various tissues including the brain, heart, lung, kidney, skeletal muscle, and testis. The expression is reported to be up-regulated in endothelial cells and microglia by inflammatory signals. CX3CR1, a specific receptor for fractalkine, mediates both leukocyte migration and adhesion.</p> <p><b>Function:</b> The soluble form is chemotactic for T-cells and monocytes, but not for neutrophils. The membrane-bound form promotes adhesion of those leukocytes to endothelial cells. May play a role in regulating leukocyte adhesion and migration processes at the endothelium. Binds to CX3CR1.</p> <p><b>Subunit:</b> Monomer.</p> <p><b>Subcellular Location:</b> Cell membrane; Single-pass type I membrane protein. Processed fractalkine: Secreted.</p> <p><b>Tissue Specificity:</b> Small intestine, colon, testis, prostate, heart, brain, lung, skeletal muscle, kidney and pancreas.</p> <p><b>Post-translational modifications:</b> A soluble short 95 kDa form may be released by proteolytic cleavage from the long membrane-anchored form. O-glycosylated with core 1 or possibly core 8 glycans.</p> <p><b>Similarity:</b> Belongs to the intercrine delta family.</p> <p><b>SWISS:</b> P78423</p> <p><b>Gene ID:</b> 6376</p> <p><b>Database links:</b></p>

[Entrez Gene: 6376](#)Human

[Entrez Gene: 20312](#)Mouse

[Entrez Gene: 89808](#)Rat

[Omim: 601880](#)Human

[SwissProt: P78423](#)Human

[SwissProt: O35188](#)Mouse

[SwissProt: O55145](#)Rat

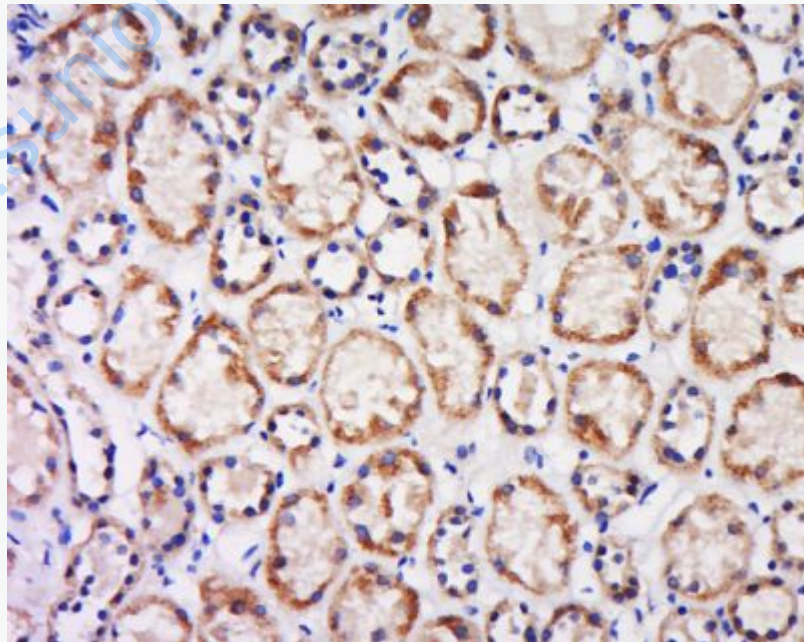
[Unigene: 531668](#)Human

**Important Note:**

This product as supplied is intended for research use only, not for use in human, therapeutic or diagnostic applications.

神经趋化蛋白cx3cl1免疫应答及细胞附着, 参与cell factor和Chemokine介导Signal transduction、免疫细胞趋化性、调控炎症应答反应、白细胞附着激活、正调控钙非依赖细胞附着。

**Picture:**



Tissue/cell: human kidney tissue; 4% Paraformaldehyde-fixed and paraffin-embedded;

Antigen retrieval: citrate buffer ( 0.01M, pH 6.0 ), Boiling bathing for 15min; Block endogenous peroxidase by 3% Hydrogen peroxide for 30min; Blocking buffer (normal goat serum,C-0005) at 37°C for 20 min;

Incubation: Anti-CX3CL1 Polyclonal Antibody, Unconjugated(SL0811R) 1:500, overnight at 4°C, followed by conjugation to the secondary antibody(SP-0023) and DAB(C-0010) staining

[www.sunlongbiotech.com](http://www.sunlongbiotech.com)