



Rabbit Anti-Beta-lactoglobulin antibody

SL0814R

Product Name:	Beta-lactoglobulin
Chinese Name:	β-乳球蛋白抗体
Organism Species:	Rabbit
Clonality:	Polyclonal
React Species:	Cow,Goat,
Applications:	WB=1:500-2000ELISA=1:500-1000IHC-F=1:400-800IF=1:100-500 (Paraffin sections need antigen repair) not yet tested in other applications. optimal dilutions/concentrations should be determined by the end user.
Molecular weight:	18kDa
Cellular localization:	Secretory protein
Form:	Lyophilized or Liquid
Concentration:	1mg/ml
immunogen:	Beta-lactoglobulin:
Lsotype:	IgG
Purification:	affinity purified by Protein A
Storage Buffer:	0.01M TBS(pH7.4) with 1% BSA, 0.03% Proclin300 and 50% Glycerol.
Storage:	Store at -20 °C for one year. Avoid repeated freeze/thaw cycles. The lyophilized antibody is stable at room temperature for at least one month and for greater than a year when kept at -20°C. When reconstituted in sterile pH 7.4 0.01M PBS or diluent of antibody the antibody is stable for at least two weeks at 2-4 °C.
PubMed:	PubMed
Product Detail:	bov beta-lactoglobulin is the content of the milk in the category of a protein myosin. Protein contained in whole milk (3.7 percent) to 80% of the casein in the removal of the casein whey protein, 55% of the beta-lactoglobulin. Access to the crystallization of the isoelectric point = 5.2, the pH in this dual capacity under the main structure. The people in latex-free Beta-lactoglobulin. The beta-lactoglobulin and bov beta-lactoglobulinA-based. Function:

Primary component of whey, it binds retinol and is probably involved in the transport of that molecule.

Subcellular Location:

Secreted.

Tissue Specificity:

Synthesized in mammary gland and secreted in milk.

Post-translational modifications:

Alternate disulfide bonds occur in equal amounts in all variants examined.

Similarity:

Belongs to the calycin superfamily. Lipocalin family.

SWISS:

P02754

Gene ID:

280838

Database links:

[Entrez Gene: 280838Cow](#)

[SwissProt: Q32P89Cow](#)

[Unigene: 385Cow](#)

Important Note:

This product as supplied is intended for research use only, not for use in human, therapeutic or diagnostic applications.

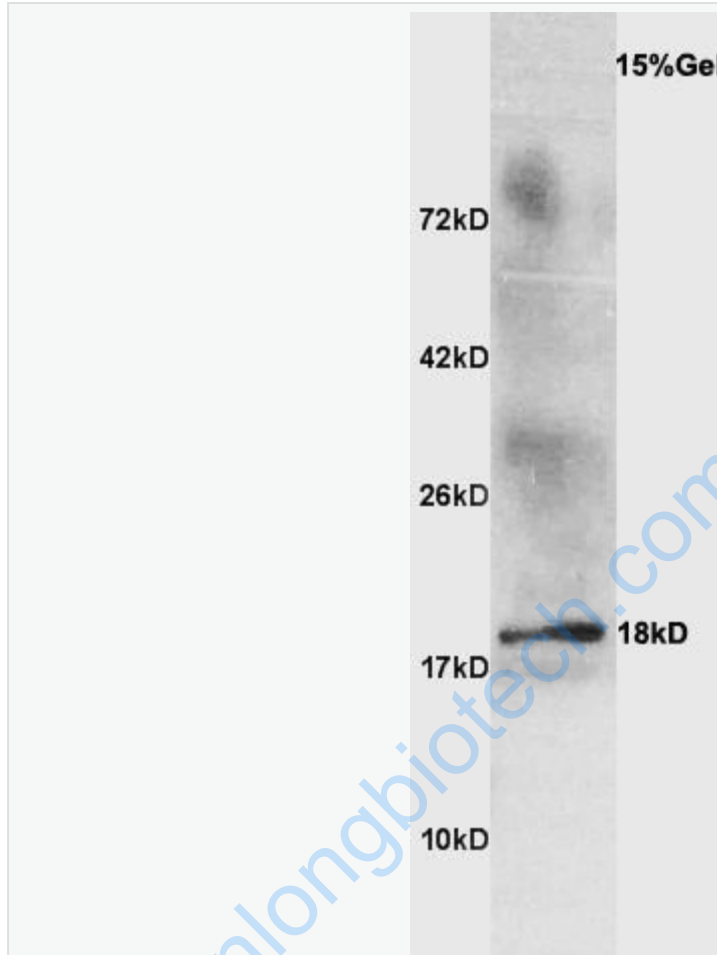
β-

乳球蛋白是含于乳中的球蛋白类的一种蛋白质。牛乳中所含全蛋白(3.7%)的80%为酪蛋白,在除去酪蛋白的乳清蛋白质中55%为β-乳蛋白。

可获得其结晶,等电点=5.2,在此pH下主要成双量体结构。而人的乳液中不含β-乳球蛋白。

该β-乳球蛋白与牛β-乳球蛋白A型基因、牛β-乳球蛋白B型基因、山羊和绵羊β-乳球蛋白基因的同源性分别为98.55%, 99.79%, 90.70%和90.09%

Picture:



Sample: Goat milk at 30ug;

Primary: Anti- Beta-lactoglobulin (SL0814R) at 1:300 dilution;

Secondary: HRP conjugated Goat Anti-Rabbit IgG(SL0814R) at 1: 3000 dilution;

Predicted band size : 18kD

Observed band size : 18kD