



## Rabbit Anti-Megsin antibody

SL0815R

<b>Product Name:</b>	Megsin
<b>Chinese Name:</b>	丝氨酸蛋白酶抑制剂B7抗体
<b>Alias:</b>	SER-PINB7; MEGSIN; Mesangium predominant gene megsin; MGC120014; MGC120015; Serpin B7; Serpin peptidase inhibitor clade B (ovalbumin) member 7; TP55; SPB7_HUMAN.
<b>Organism Species:</b>	Rabbit
<b>Clonality:</b>	Polyclonal
<b>React Species:</b>	Human,Mouse,Rat,
<b>Applications:</b>	ELISA=1:500-1000IHC-P=1:400-800IHC-F=1:400-800IF=1:100-500 (Paraffin sections need antigen repair) not yet tested in other applications. optimal dilutions/concentrations should be determined by the end user.
<b>Molecular weight:</b>	42kDa
<b>Cellular localization:</b>	cytoplasmic
<b>Form:</b>	Lyophilized or Liquid
<b>Concentration:</b>	1mg/ml
<b>immunogen:</b>	KLH conjugated synthetic peptide derived from human Megsin:301-380/380
<b>Lsotype:</b>	IgG
<b>Purification:</b>	affinity purified by Protein A
<b>Storage Buffer:</b>	0.01M TBS(pH7.4) with 1% BSA, 0.03% Proclin300 and 50% Glycerol.
<b>Storage:</b>	Store at -20 °C for one year. Avoid repeated freeze/thaw cycles. The lyophilized antibody is stable at room temperature for at least one month and for greater than a year when kept at -20°C. When reconstituted in sterile pH 7.4 0.01M PBS or diluent of antibody the antibody is stable for at least two weeks at 2-4 °C.
<b>PubMed:</b>	<a href="#">PubMed</a>
<b>Product Detail:</b>	Serpin B7 is a serine proteinase inhibitor of the ovalbumin like B clade of serpins. It was first discovered in a search for agents responsible for thrombopoiesis, and maturation of megakaryocytes. SerpinB7 was identified as a protein that increased acetylcholine esterase stimulation from bone marrow progenitor cells, and injection of SerpinB7 in mice induced a 40% increase in platelets compared to controls. Shortly thereafter, in a

search for kidney specific genes, SerpinB7 was described as a protein specific to mesangial cells, and was named megsin to indicate the tissue specificity of the protein.

**Function:**

Might function as an inhibitor of Lys-specific proteases. Might influence the maturation of megakaryocytes via its action as a serpin.

**Subcellular Location:**

Cytoplasm.

**Tissue Specificity:**

Predominantly expressed in mesangial cells.

**Similarity:**

Belongs to the serpin family. Ov-serpin subfamily.

**SWISS:**

O75635

**Gene ID:**

8710

**Database links:**

[Entrez Gene: 8710](#)Human

[Omim: 603357](#)Human

[SwissProt: O75635](#)Human

[Unigene: 138202](#)Human

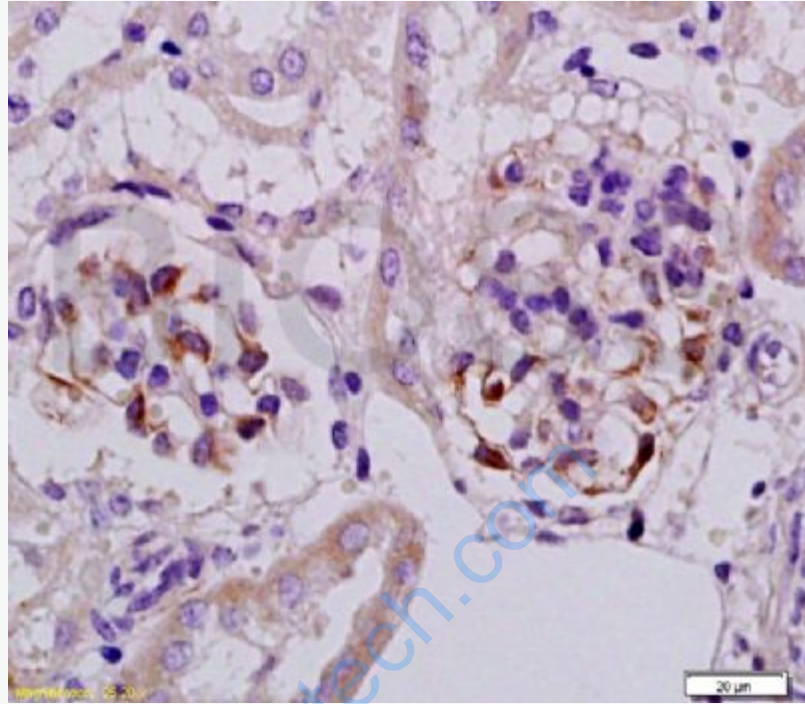
[Unigene: 742388](#)Human

**Important Note:**

This product as supplied is intended for research use only, not for use in human, therapeutic or diagnostic applications.

megin是新近发现的蛋白质,属于丝氨酸蛋白酶抑制剂(Serpin)超家族,特异表达于肾小球系膜细胞,其表达异常在肾脏疾病进展中具有重要作用,megin蛋白适量的表达,对维持人体正常的生理病理过程如凝血、纤维溶解、间质代谢、发育、血压、Tumour和炎症等是很重要的。在系膜细胞增生和系膜基质增多明显的IgA肾病肾小球中, megin的表达显著上调。

**Picture:**



Tissue/cell: rat kidney tissue; 4% Paraformaldehyde-fixed and paraffin-embedded;  
Antigen retrieval: citrate buffer ( 0.01M, pH 6.0 ), Boiling bathing for 15min; Block  
endogenous peroxidase by 3% Hydrogen peroxide for 30min; Blocking buffer  
(normal goat serum,C-0005) at 37°C for 20 min;  
Incubation: Anti-Megsin Polyclonal Antibody, Unconjugated(SL0815R) 1:200,  
overnight at 4°C, followed by conjugation to the secondary antibody(SP-0023) and  
DAB(C-0010) staining