



Rabbit Anti-laminin antibody

SL0821R

Product Name:	laminin
Chinese Name:	层粘连蛋白抗体
Alias:	LAMA 1; LAMA; LAMA1; LAMB1; Laminin A chain; Laminin alpha 1; Laminin alpha 1 chain; Laminin B1 chain; Laminin subunit beta 1.
文献引用 PubMed :	<p>Specific References(2) SL0821R has been referenced in 2 publications.</p> <p>[IF=4.19]Su, Chuanyang, et al. "Tetrachlorobenzoquinone activates Nrf2 signaling by Keap1 cross-linking and ubiquitin translocation, but not Keap1-Cullin3 complex dissociation." Chemical Research in Toxicology (2015).WB;Human. PubMed:25742418</p> <p>[IF=8.32]Gong, Tao, et al. "A Dynamically Tunable, Bioinspired Micropatterned Surface Regulates Vascular Endothelial and Smooth Muscle Cells Growth at Vascularization." Small (2016).IHC-P;Rabbit. PubMed:27595865</p>
Organism Species:	Rabbit
Clonality:	Polyclonal
React Species:	Human,Mouse,Rat,Cow,
Applications:	ELISA=1:500-1000IHC-P=1:400-800IHC-F=1:400-800IF=1:100-500 (Paraffin sections need antigen repair) not yet tested in other applications. optimal dilutions/concentrations should be determined by the end user.
Molecular weight:	198kDa
Cellular localization:	The cell membraneExtracellular matrixSecretory protein
Form:	Lyophilized or Liquid
Concentration:	1mg/ml
immunogen:	KLH conjugated synthetic peptide derived from human laminin:901-1000/3075

Lsotype:	IgG
Purification:	affinity purified by Protein A
Storage Buffer:	0.01M TBS(pH7.4) with 1% BSA, 0.03% Proclin300 and 50% Glycerol.
Storage:	Store at -20 °C for one year. Avoid repeated freeze/thaw cycles. The lyophilized antibody is stable at room temperature for at least one month and for greater than a year when kept at -20°C. When reconstituted in sterile pH 7.4 0.01M PBS or diluent of antibody the antibody is stable for at least two weeks at 2-4 °C.
PubMed:	PubMed
Product Detail:	<p>laminins are the major noncollagenous components of basement membranes that mediate cell adhesion, growth migration, and differentiation; the laminin-type epidermal growth factor-like module occurs in tandem arrays; the domain contains 4 disulfide bonds (loops a-d) the first three resemble epidermal growth factor (EGF); the number of copies of this domain in the different forms of laminins is highly variable ranging from 3 up to 22 copies.</p> <p>Function: Binding to cells via a high affinity receptor, laminin is thought to mediate the attachment, migration and organization of cells into tissues during embryonic development by interacting with other extracellular matrix components.</p> <p>Subcellular Location: Secreted > extracellular space > extracellular matrix > basement membrane.</p> <p>Tissue Specificity: Broadly expressed in: skin, heart, lung, and the reproductive tracts.</p> <p>Similarity: Contains 11 laminin EGF-like domains. Contains 1 laminin IV type A domain. Contains 1 laminin N-terminal domain.</p> <p>SWISS: P07942</p> <p>Gene ID: 284217</p> <p>Database links:</p> <p>Entrez Gene: 10319Human</p> <p>Entrez Gene: 284217Human</p> <p>Entrez Gene: 3908Human</p> <p>Entrez Gene: 3912Human</p>

[Entrez Gene: 3913](#)Human

[Entrez Gene: 3915](#)Human

[Entrez Gene: 3918](#)Human

[Entrez Gene: 16772](#)Mouse

[Entrez Gene: 316758](#)Rat

[Omim: 150320](#)Human

[SwissProt: P07942](#)Human

[SwissProt: P24043](#)Human

[SwissProt: P25391](#)Human

[SwissProt: P55268](#)Human

[SwissProt: Q9Y6N6](#)Human

[SwissProt: P19137](#)Mouse

[SwissProt: Q9R0B6](#)Mouse

[Unigene: 201805](#)Human

[Unigene: 270364](#)Human

[Unigene: 302362](#)Mouse

Important Note:

This product as supplied is intended for research use only, not for use in human, therapeutic or diagnostic applications.

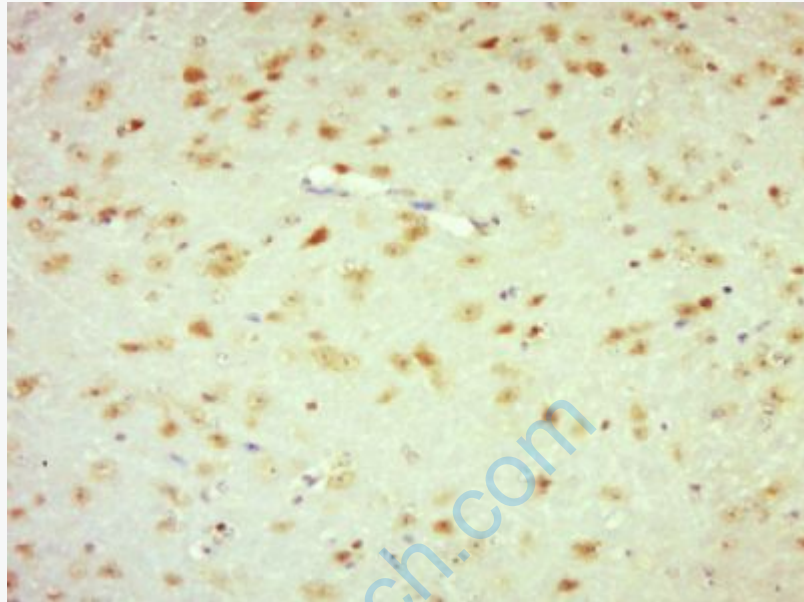
层粘连蛋白主要存在于基膜(basal lamina)结构中,是基膜所特有的非胶原glycoprotein。

层粘连蛋白在细胞发育过程中刺激细胞粘着、细胞运动。LN能够刺激胚胎中神经轴的生长,并促进成年动物的神经损伤后重生长和再生。如同纤粘连蛋白,细胞外的LN能够影响细胞的生长、迁移和分化。LN在原生生殖细胞的迁移中起关键作用。

层粘连蛋白是细胞外基底膜的主要组成部分,分布于基底膜和Extracellular matrix内、成纤维细胞、endothelial

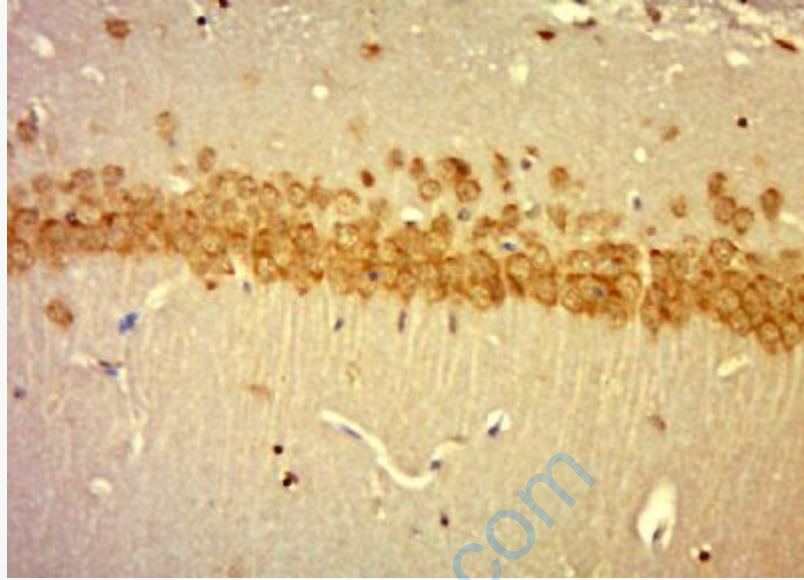
cells和平滑肌细胞分泌层粘连蛋白。Tumour的浸润和转移与其遭到破坏相关。该抗体可用于标记基底膜,有助于观察Tumour周围基底膜的分布及其改变,间接提示该

Tumour的分化程度和浸润情况。

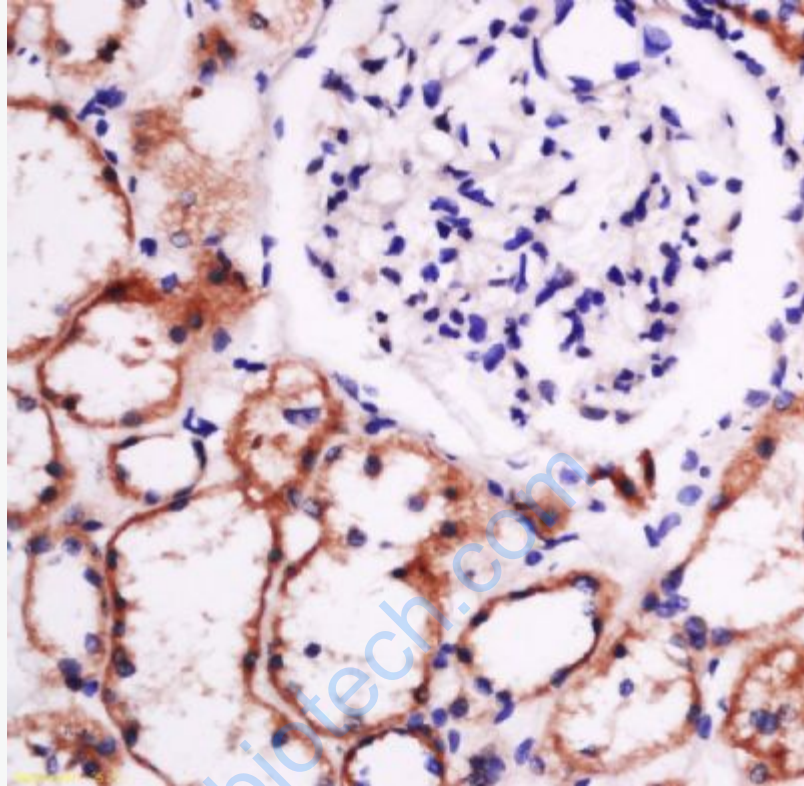


Picture:

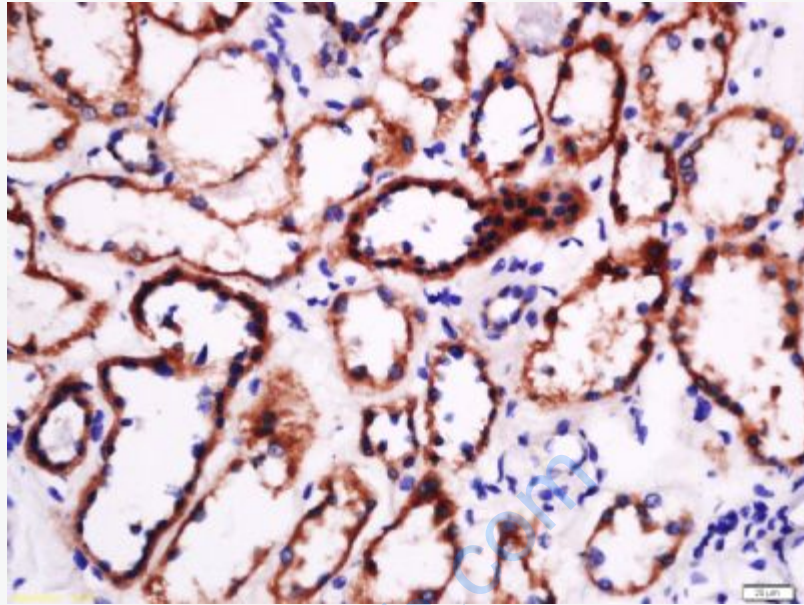
Paraformaldehyde-fixed, paraffin embedded (Mouse brain); Antigen retrieval by boiling in sodium citrate buffer (pH6.0) for 15min; Block endogenous peroxidase by 3% hydrogen peroxide for 20 minutes; Blocking buffer (normal goat serum) at 37°C for 30min; Antibody incubation with (laminin) Polyclonal Antibody, Unconjugated (SL0821R) at 1:500 overnight at 4°C, followed by a conjugated secondary (sp-0023) for 20 minutes and DAB staining.



Paraformaldehyde-fixed, paraffin embedded (mouse brain); Antigen retrieval by boiling in sodium citrate buffer (pH6.0) for 15min; Block endogenous peroxidase by 3% hydrogen peroxide for 20 minutes; Blocking buffer (normal goat serum) at 37°C for 30min; Antibody incubation with (laminin) Polyclonal Antibody, Unconjugated (SL0821R) at 1:400 overnight at 4°C, followed by a conjugated secondary (sp-0023) for 20 minutes and DAB staining.



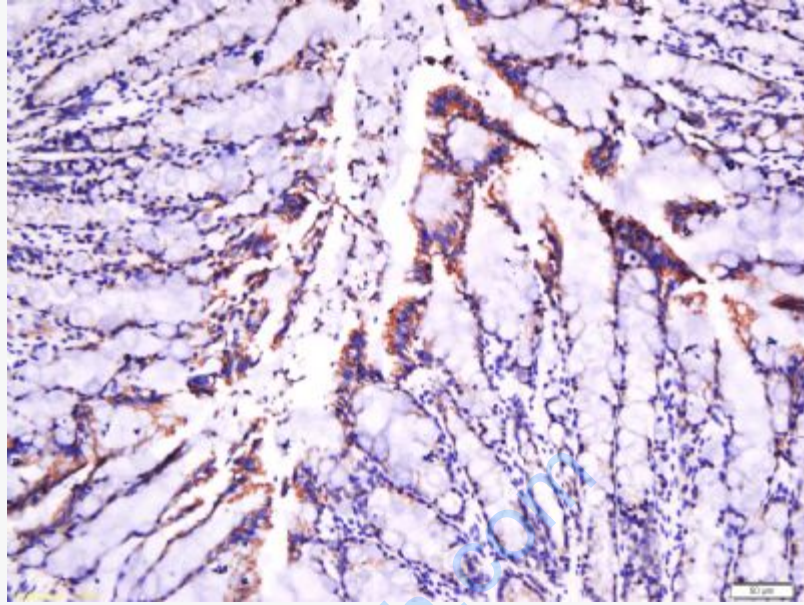
Paraformaldehyde-fixed, paraffin embedded (human kidney tissue); Antigen retrieval by boiling in sodium citrate buffer (pH6.0) for 15min; Block endogenous peroxidase by 3% hydrogen peroxide for 20 minutes; Blocking buffer (normal goat serum) at 37°C for 30min; Antibody incubation with (laminin) Polyclonal Antibody, Unconjugated (SL0821R) at 1:400 overnight at 4°C, followed by a conjugated secondary (sp-0023) for 20 minutes and DAB staining.



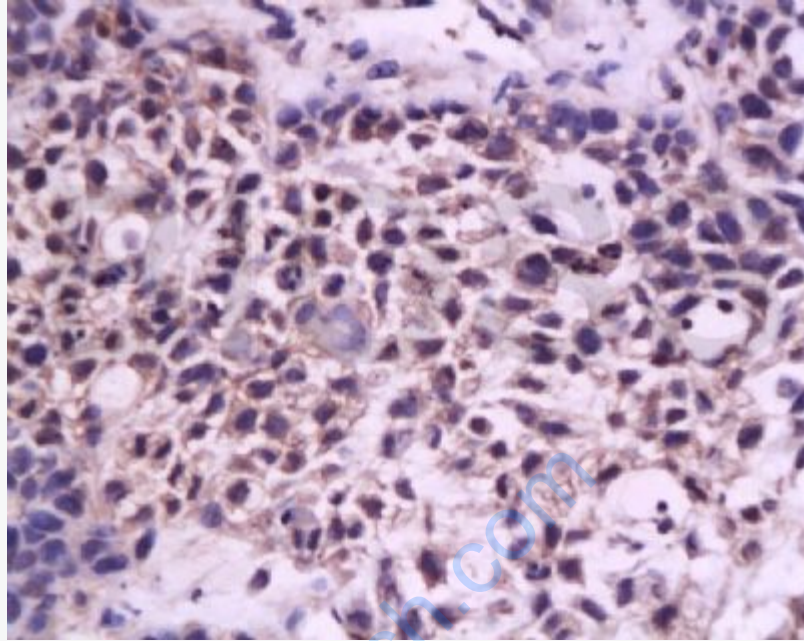
Tissue/cell: human kidney tissue; 4% Paraformaldehyde-fixed and paraffin-embedded;

Antigen retrieval: citrate buffer (0.01M, pH 6.0), Boiling bathing for 15min; Block endogenous peroxidase by 3% Hydrogen peroxide for 30min; Blocking buffer (normal goat serum,C-0005) at 37°C for 20 min;

Incubation: Anti-laminin Polyclonal Antibody, Unconjugated(SL0821R) 1:500, overnight at 4°C, followed by conjugation to the secondary antibody(SP-0023) and DAB(C-0010) staining



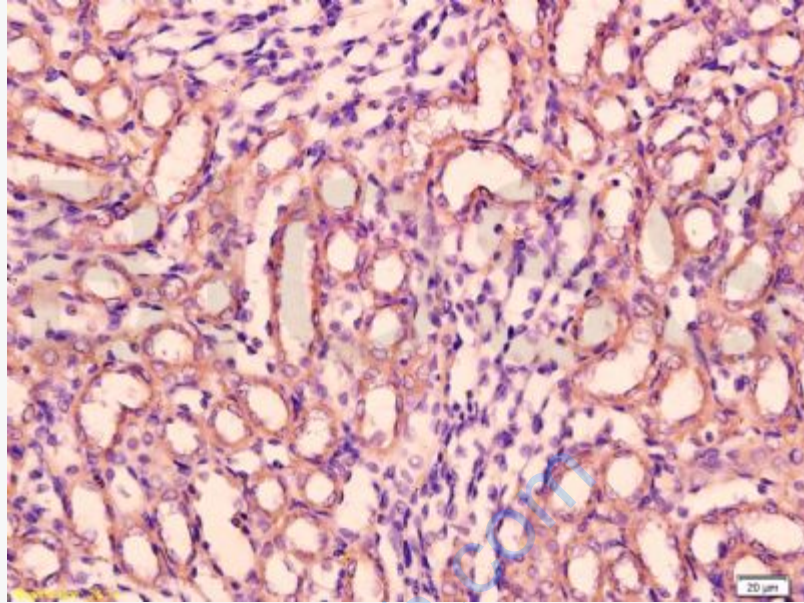
Tissue/cell: rat intestine tissue; 4% Paraformaldehyde-fixed and paraffin-embedded;
Antigen retrieval: citrate buffer (0.01M, pH 6.0), Boiling bathing for 15min; Block endogenous peroxidase by 3% Hydrogen peroxide for 30min; Blocking buffer (normal goat serum,C-0005) at 37°C for 20 min;
Incubation: Anti-laminin Polyclonal Antibody, Unconjugated(SL0821R) 1:500, overnight at 4°C, followed by conjugation to the secondary antibody(SP-0023) and DAB(C-0010) staining



Tissue/cell: Transplantation tumor of In nude mice; 4% Paraformaldehyde-fixed and paraffin-embedded;

Antigen retrieval: citrate buffer (0.01M, pH 6.0), Boiling bathing for 15min; Block endogenous peroxidase by 3% Hydrogen peroxide for 30min; Blocking buffer (normal goat serum,C-0005) at 37°C for 20 min;

Incubation: Anti-laminin Polyclonal Antibody, Unconjugated(SL0821R) 1:200, overnight at 4°C, followed by conjugation to the secondary antibody(SP-0023) and DAB(C-0010) staining



Tissue/cell: rat kidney tissue; 4% Paraformaldehyde-fixed and paraffin-embedded;
Antigen retrieval: citrate buffer (0.01M, pH 6.0), Boiling bathing for 15min; Block endogenous peroxidase by 3% Hydrogen peroxide for 30min; Blocking buffer (normal goat serum,C-0005) at 37°C for 20 min;
Incubation: Anti-laminin Polyclonal Antibody, Unconjugated(SL0821R) 1:200, overnight at 4°C, followed by conjugation to the secondary antibody(SP-0023) and DAB(C-0010) staining