



## Rabbit Anti-S100A1 antibody

SL0850R

<b>Product Name:</b>	S100A1
<b>Chinese Name:</b>	S100A1抗体
<b>Alias:</b>	S100; S-100 protein alpha subunit; S-100 protein alpha chain; Protein S100-A1; S100 calcium-binding protein A1; S100 alpha; Protein S100-A1; S-100 protein alpha chain; S-100 protein subunit alpha; S100 Calcium Binding Protein A1; S100 calcium-binding protein A1; S100 protein alpha polypeptide; S100A; S10A1_HUMAN; S-100 $\alpha$ ; S-100- $\alpha$ ; S-100 $\alpha$ .
<b>Organism Species:</b>	Rabbit
<b>Clonality:</b>	Polyclonal
<b>React Species:</b>	Human,Mouse,Rat,Chicken,Dog,Cow,Horse,
<b>Applications:</b>	ELISA=1:500-1000IHC-P=1:400-800IHC-F=1:400-800IF=1:100-500 (Paraffin sections need antigen repair) not yet tested in other applications. optimal dilutions/concentrations should be determined by the end user.
<b>Molecular weight:</b>	10kDa
<b>Cellular localization:</b>	The nucleusExtracellular matrix
<b>Form:</b>	Lyophilized or Liquid
<b>Concentration:</b>	1mg/ml
<b>immunogen:</b>	KLH conjugated synthetic peptide derived from human S100A1:11-94/94
<b>Lsotype:</b>	IgG
<b>Purification:</b>	affinity purified by Protein A
<b>Storage Buffer:</b>	0.01M TBS(pH7.4) with 1% BSA, 0.03% Proclin300 and 50% Glycerol.
<b>Storage:</b>	Store at -20 °C for one year. Avoid repeated freeze/thaw cycles. The lyophilized antibody is stable at room temperature for at least one month and for greater than a year when kept at -20°C. When reconstituted in sterile pH 7.4 0.01M PBS or diluent of antibody the antibody is stable for at least two weeks at 2-4 °C.
<b>PubMed:</b>	<a href="#">PubMed</a>
<b>Product Detail:</b>	The protein encoded by this gene is a member of the S100 family of proteins containing 2 EF-hand calcium-binding motifs. S100 proteins are localized in the cytoplasm and/or nucleus of a wide range of cells, and involved in the regulation of a number of cellular

processes such as cell cycle progression and differentiation. S100 genes include at least 13 members which are located as a cluster on chromosome 1q21. This protein may function in stimulation of Ca<sup>2+</sup>-induced Ca<sup>2+</sup> release, inhibition of microtubule assembly, and inhibition of protein kinase C-mediated phosphorylation. Reduced expression of this protein has been implicated in cardiomyopathies. [provided by RefSeq, Jul 2008]

**Function:**

Weakly binds calcium but binds zinc very tightly-distinct binding sites with different affinities exist for both ions on each monomer. Physiological concentrations of potassium ion antagonize the binding of both divalent cations, especially affecting high-affinity calcium-binding sites.

**Subunit:**

Dimer of either two alpha chains, or two beta chains, or one alpha and one beta chain. Also forms heterodimers with S100P. Interacts with AGER and CAPZA1. Interacts with FKBP4. Interacts with RYR1 and RYR2. Interacts with CACYBP in a calcium-dependent manner. Interacts with PPP5C (via TPR repeats); the interaction is calcium-dependent and modulates PPP5C activity.

**Subcellular Location:**

Cytoplasm.

**Tissue Specificity:**

Highly prevalent in heart. Also found in lesser quantities in skeletal muscle and brain.

**Similarity:**

Belongs to the S-100 family.  
Contains 2 EF-hand domains.

**SWISS:**

P23297

**Gene ID:**

6271

**Database links:**

[Entrez Gene: 6271](#) Human

[Entrez Gene: 20193](#) Mouse

[Entrez Gene: 295214](#) Rat

[Omim: 176940](#) Human

[SwissProt: P23297](#) Human

[SwissProt: P56565](#) Mouse

[SwissProt: P35467](#) Rat

[Unigene: 515715](#) Human

[Unigene: 24662](#) Mouse

[Unigene: 11091](#) Rat

**Important Note:**

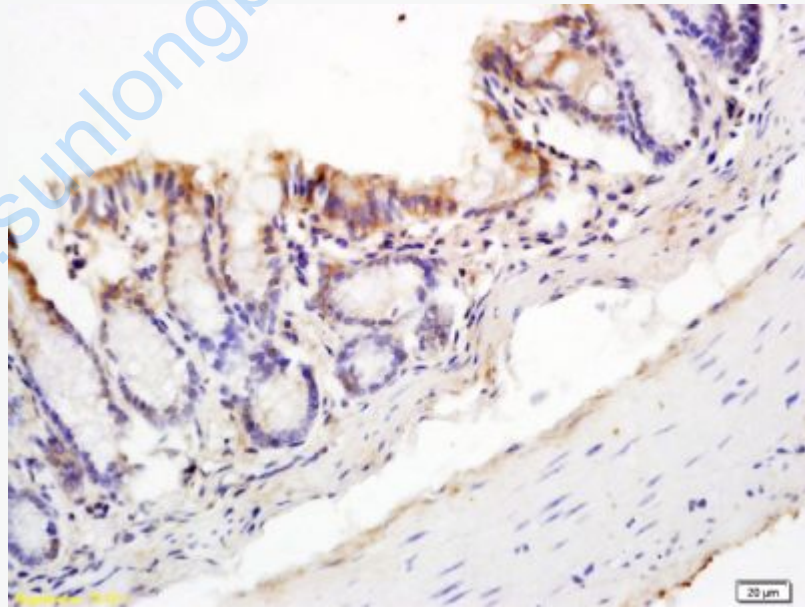
This product as supplied is intended for research use only, not for use in human, therapeutic or diagnostic applications.

星型胶质细胞Marker

S100A1是钙Binding

protein家族S100亚家族中一个小分子量的酸性蛋白, 对稳定蛋白质分子的构象起到一定的作用。

**Picture:**

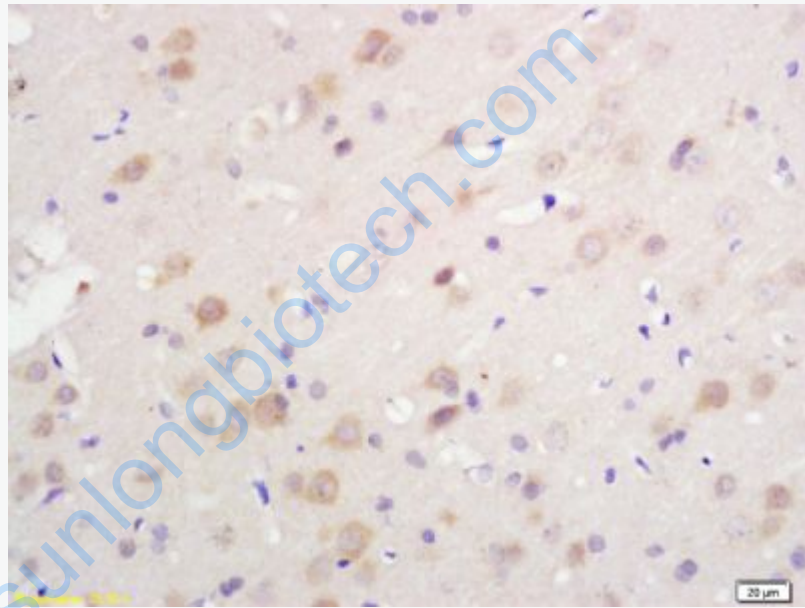


Tissue/cell: mouse colon tissue; 4% Paraformaldehyde-fixed and paraffin-embedded;

Antigen retrieval: citrate buffer ( 0.01M, pH 6.0 ), Boiling bathing for 15min; Block

endogenous peroxidase by 3% Hydrogen peroxide for 30min; Blocking buffer (normal goat serum,C-0005) at 37°C for 20 min;

Incubation: Anti-S-100/S100A1 Polyclonal Antibody, Unconjugated(SL0850R) 1:200, overnight at 4°C, followed by conjugation to the secondary antibody(SP-0023) and DAB(C-0010) staining



Tissue/cell: rat brain tissue; 4% Paraformaldehyde-fixed and paraffin-embedded;

Antigen retrieval: citrate buffer ( 0.01M, pH 6.0 ), Boiling bathing for 15min; Block endogenous peroxidase by 3% Hydrogen peroxide for 30min; Blocking buffer (normal goat serum,C-0005) at 37°C for 20 min;

Incubation: Anti-S-100/S100A1 Polyclonal Antibody, Unconjugated(SL0850R) 1:200, overnight at 4°C, followed by conjugation to the secondary antibody(SP-0023) and DAB(C-0010) staining