



## Rabbit Anti-SLC34A2 antibody

SL0856R

<b>Product Name:</b>	SLC34A2
<b>Chinese Name:</b>	磷酸钠协同Transporter抗体
<b>Alias:</b>	NaPi-2b; Sodium-dependent phosphate transport protein 2B; Sodium/phosphatecotransporter 2B; Na(+)/Pi cotransporter 2B; Sodium-phosphatetransport protein 2B; Na(+)-dependent phosphate cotransporter 2B; Solute carrier family 34 member 2; NPT2B_HUMAN; NaPi3b; SLC34A2; Sodium-dependent phosphate transport protein 2B.
<b>Organism Species:</b>	Rabbit
<b>Clonality:</b>	Polyclonal
<b>React Species:</b>	Mouse,Rat,
<b>Applications:</b>	WB=1:500-2000ELISA=1:500-1000IHC-P=1:400-800IHC-F=1:400-800IF=1:100-500 (Paraffin sections need antigen repair) not yet tested in other applications. optimal dilutions/concentrations should be determined by the end user.
<b>Molecular weight:</b>	77kDa
<b>Cellular localization:</b>	The cell membrane
<b>Form:</b>	Lyophilized or Liquid
<b>Concentration:</b>	1mg/ml
<b>immunogen:</b>	KLH conjugated synthetic peptide derived from mouse SLC34A2:1-50/697<Cytoplasmic>
<b>Lsotype:</b>	IgG
<b>Purification:</b>	affinity purified by Protein A
<b>Storage Buffer:</b>	0.01M TBS(pH7.4) with 1% BSA, 0.03% Proclin300 and 50% Glycerol.
<b>Storage:</b>	Store at -20 °C for one year. Avoid repeated freeze/thaw cycles. The lyophilized antibody is stable at room temperature for at least one month and for greater than a year when kept at -20°C. When reconstituted in sterile pH 7.4 0.01M PBS or diluent of antibody the antibody is stable for at least two weeks at 2-4 °C.
<b>PubMed:</b>	<a href="#">PubMed</a>
<b>Product Detail:</b>	Na+/Pi-cotransporterThis is a family of mainly mammalian type II renal Na+/Pi-cotransporters with other related sequences from lower eukaryotes and bacteria some of

which are also Na<sup>+</sup>/Pi-cotransporters. In the kidney the type II renal Na<sup>+</sup>/Pi-cotransporters protein allows reabsorption of filtered Pi in the proximal tubule.

**Function:**

May be involved in actively transporting phosphate into cells via Na<sup>(+)</sup> cotransport. It may be the main phosphate transport protein in the intestinal brush border membrane. May have a role in the synthesis of surfactant in lungs' alveoli.

**Subcellular Location:**

Membrane; Multi-pass membrane protein.

**Tissue Specificity:**

Highly abundant in the ileum of small intestine, whereas it is almost absent in the duodenum and in the jejunum.

**Similarity:**

Belongs to the SLC34A transporter family.

**SWISS:**

Q9DBP0

**Gene ID:**

20531

**Database links:**

[Entrez Gene: 10568](#)Human

[Entrez Gene: 20531](#) Mouse

[Omim: 604217](#)Human

[SwissProt: O95436](#)Human

[Unigene: 479372](#)Human

**Important Note:**

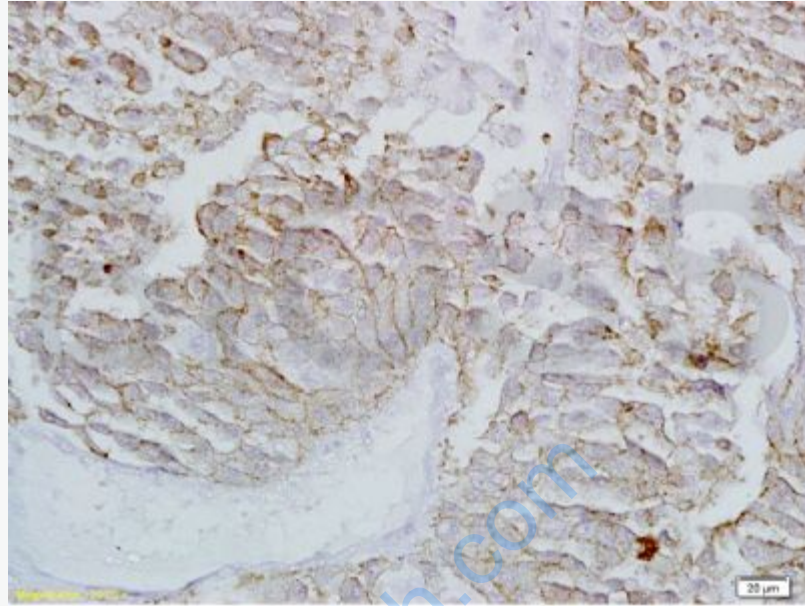
This product as supplied is intended for research use only, not for use in human, therapeutic or diagnostic applications.

**SLC34A2/NaPi-**

2b是磷酸钠协同Transporter的基因, 表达在动物多种组织中, 以肺组织表达最高。该基因主要参与无机磷代谢, 与肺泡微石症、睾丸微石症等多种代谢性疾病发病相关

。

Picture:



**bs-0856R Anti-SLC34A2 Polyclonal Antibody**

Tissue/cell: rat lung tissue; 4% Paraformaldehyde-fixed and paraffin-embedded

Antigen retrieval: citrate buffer ( 0.01M, pH 6.0 ), Boiling bathing for 15min

Block endogenous peroxidase by 3% Hydrogen peroxide for 30min

Blocking buffer (normal goat serum) at 37 °C for 20 min

Incubation: Anti-SLC34A2 Polyclonal Antibody, Unconjugated(bs-0856R) 1:200, overnight at 4°C, followed by conjugation to the secondary antibody and DAB staining