



## Rabbit Anti-VCAM1 antibody

SL0920R

<b>Product Name:</b>	VCAM1
<b>Chinese Name:</b>	vascular endothelial cell粘附分子抗体
<b>Alias:</b>	CD 106; CD106; CD106 Antigen; DKFZp779G2333; INCAM 100; MGC99561; Vascular Cell Adhesion Molecule 1; Vascular cell adhesion protein 1; VCAM 1; VCAM-1; INCAM-100; V-CAM 1; VCAM1_HUMAN.
<b>文献引用</b> <b>PubMed</b> :	<p><b>Specific References(5)</b> SL0920R has been referenced in 5 publications.</p> <p><b>[IF=5.21]</b>Ma, Yanqin, et al. "Inflammatory responses induced by fluoride and arsenic at toxic concentration in rabbit aorta." Archives of toxicology 86.6 (2012): 849-856.<b>WB;Rabbit.</b> <a href="#">PubMed:22422340</a></p> <p><b>[IF=1.93]</b>Tang, Li-Qin, et al. "The renoprotective effects of berberine and its potential impact on the expression of <math>\beta</math>-arrestins and ICAM-1/VCAM-1 in streptozocin induced-diabetic nephropathy rats." Journal of Diabetes (2015).<b>other;</b> <a href="#">PubMed:26531813</a></p> <p><b>[IF=4.87]</b>Lozhkin, Andrey, et al. "NADPH oxidase 4 regulates vascular inflammation in aging and atherosclerosis." Journal of Molecular and Cellular Cardiology (2016).<b>IHC-F;Mouse.</b> <a href="#">PubMed:27986445</a></p> <p><b>[IF=1.28]</b>Mu, Wei, et al. "Expression of vascular cell adhesion molecule-1 in the aortic tissues of atherosclerotic patients and the associated clinical implications." Experimental and therapeutic medicine 10.2 (2015): 423-428.<b>IHC-P;Human.</b> <a href="#">PubMed:26622332</a></p>

	<p><b>[IF=5.23]</b>Kim, Chae Eun, et al. "Effects of silk fibroin in murine dry eye." Scientific Reports 7 (2017): 44364.<b>IHC-F;Mouse.</b></p> <p style="text-align: right;"><a href="#">PubMed:28281688</a></p>
<b>Organism Species:</b>	Rabbit
<b>Clonality:</b>	Polyclonal
<b>React Species:</b>	Human,Mouse,Rat,Pig,Rabbit,Sheep,
<b>Applications:</b>	WB=1:500-2000ELISA=1:500-1000 not yet tested in other applications. optimal dilutions/concentrations should be determined by the end user.
<b>Molecular weight:</b>	81kDa
<b>Cellular localization:</b>	The cell membrane
<b>Form:</b>	Lyophilized or Liquid
<b>Concentration:</b>	1mg/ml
<b>immunogen:</b>	KLH conjugated synthetic peptide derived from human VCAM-1:651-739/739<Cytoplasmic>
<b>Lsotype:</b>	IgG
<b>Purification:</b>	affinity purified by Protein A
<b>Storage Buffer:</b>	0.01M TBS(pH7.4) with 1% BSA, 0.03% Proclin300 and 50% Glycerol.
<b>Storage:</b>	Store at -20 °C for one year. Avoid repeated freeze/thaw cycles. The lyophilized antibody is stable at room temperature for at least one month and for greater than a year when kept at -20°C. When reconstituted in sterile pH 7.4 0.01M PBS or diluent of antibody the antibody is stable for at least two weeks at 2-4 °C.
<b>PubMed:</b>	<a href="#">PubMed</a>
<b>Product Detail:</b>	<p>VCAM1 is important in cell-cell recognition. Appears to function in leukocyte-endothelial cell adhesion. Interacts with the integrins alpha4 beta1 (beta 1 integrin VLA4) and alpha4 beta7 on leukocytes, and mediates both adhesion and signal transduction. The VCAM1/VLA4 interaction may play a pathophysiologic role both in immune responses and in leukocyte emigration to sites of inflammation. VCAM1 is also expressed by several non endothelial cell types including some macrophages, follicular dendritic cells and bone marrow, stromal cells.</p> <p><b>Function:</b> Important in cell-cell recognition. Appears to function in leukocyte-endothelial cell adhesion. Interacts with the beta-1 integrin VLA4 on leukocytes, and mediates both adhesion and signal transduction. The VCAM1/VLA4 interaction may play a pathophysiologic role both in immune responses and in leukocyte emigration to sites of inflammation.</p> <p><b>Subunit:</b> Binds to ECMV-D capsid proteins and acts as a receptor for this virus.</p> <p><b>Subcellular Location:</b> Isoform 1: Cell membrane; Single-pass type I membrane protein. Isoform 2: Cell membrane; Lipid-anchor, GPI-anchor.</p>

**Tissue Specificity:**

Expressed on inflamed vascular endothelium, as well as on macrophage-like and dendritic cell types in both normal and inflamed tissue. Expressed in the bone marrow.

**Similarity:**

Contains 7 Ig-like C2-type (immunoglobulin-like) domains.

**SWISS:**

P19320

**Gene ID:**

7412

**Database links:**

[Entrez Gene: 7412](#)Human

[Entrez Gene: 22329](#)Mouse

[Entrez Gene: 25361](#)Rat

[GenBank: NP\\_001069.1](#)Human

[GenBank: NP\\_001186763.1](#)Human

[Omim: 192225](#)Human

[SwissProt: P19320](#)Human

[SwissProt: P29533](#)Mouse

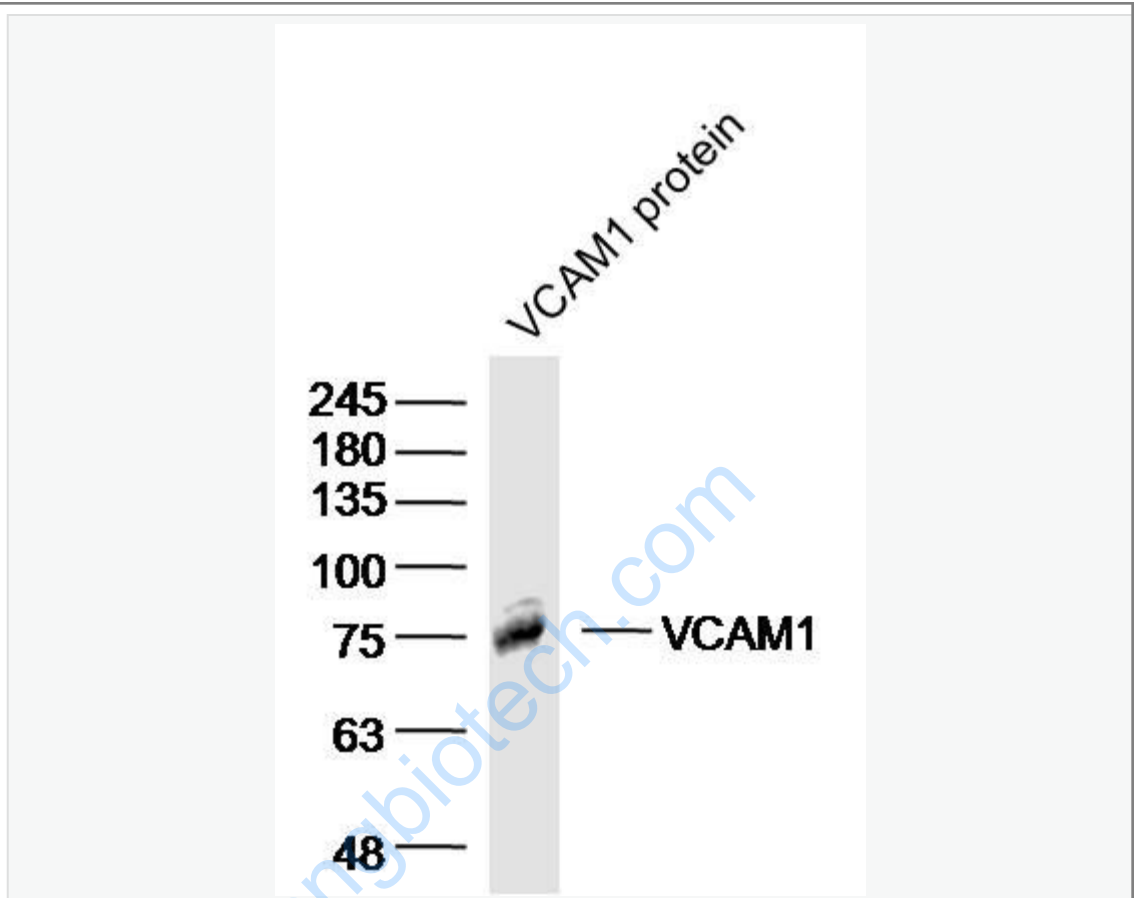
**Important Note:**

This product as supplied is intended for research use only, not for use in human, therapeutic or diagnostic applications.

细胞粘附蛋白 (Cell Adhesion Protein)

CD106是一种膜相关蛋白, 分布于血管内皮及其周围的lymphocyte、单核细胞、嗜酸性粒细胞和中性粒细胞。Anti-VCAM-1主要用于各种组织中血管内皮的检测。

Picture:



Sample: VCAM1 protein (Human) at 100 ng

Primary: Anti-VCAM1 (SL0920R) at 1/300 dilution

Secondary: IRDye800CW Goat Anti-Rabbit IgG at 1/20000 dilution

Predicted band size: 81 kD

Observed band size: 78 kD