



Rabbit Anti-LH antibody

SL0952R

Product Name:	LH
Chinese Name:	促黄体生成素抗体
Alias:	luteinizing hormone beta; CGB 4; CGB4; hLHB; Interstitial cell stimulating hormone; Interstitial cell stimulating hormone beta chain; Leutropin; LH B; LHB; LSH B; LSH beta; LSHB; Luteinising hormone; Luteinizing hormone beta; Luteinizing hormone beta polypeptide; Luteinizing hormone beta subunit; Luteinizing hormone subunit beta; Lutropin beta chain; Lutropin beta chain precursor; Lutropin subunit beta.
Organism Species:	Rabbit
Clonality:	Polyclonal
React Species:	Human,
Applications:	WB=1:500-2000ELISA=1:500-1000IHC-P=1:400-800IHC-F=1:400-800IF=1:100-500 (Paraffin sections need antigen repair) not yet tested in other applications. optimal dilutions/concentrations should be determined by the end user.
Molecular weight:	16kDa
Cellular localization:	Secretory protein
Form:	Lyophilized or Liquid
Concentration:	1mg/ml
immunogen:	KLH conjugated synthetic peptide derived from human LH:101-141/141
Lsotype:	IgG
Purification:	affinity purified by Protein A
Storage Buffer:	0.01M TBS(pH7.4) with 1% BSA, 0.03% Proclin300 and 50% Glycerol.
Storage:	Store at -20 °C for one year. Avoid repeated freeze/thaw cycles. The lyophilized antibody is stable at room temperature for at least one month and for greater than a year when kept at -20°C. When reconstituted in sterile pH 7.4 0.01M PBS or diluent of antibody the antibody is stable for at least two weeks at 2-4 °C.
PubMed:	PubMed
Product Detail:	This gene is a member of the glycoprotein hormone beta chain family and encodes the beta subunit of luteinizing hormone (LH). Glycoprotein hormones are heterodimers consisting of a common alpha subunit and an unique beta subunit which confers

biological specificity. LH is expressed in the pituitary gland and promotes spermatogenesis and ovulation by stimulating the testes and ovaries to synthesize steroids. The genes for the beta chains of chorionic gonadotropin and for luteinizing hormone are contiguous on chromosome 19q13.3. Mutations in this gene are associated with hypogonadism which is characterized by infertility and pseudohermaphroditism. [provided by RefSeq, Jul 2008]

Function:

Promotes spermatogenesis and ovulation by stimulating the testes and ovaries to synthesize steroids.

Subunit:

Heterodimer of a common alpha chain and a unique beta chain which confers biological specificity to thyrotropin, lutropin, follitropin and gonadotropin.

Subcellular Location:

Secreted.

DISEASE:

Hypogonadism LHB-related (HGON-LHB) [MIM:152780]: Characterized by infertility and pseudohermaphroditism. Note=The disease is caused by mutations affecting the gene represented in this entry.

Similarity:

Belongs to the glycoprotein hormones subunit beta family.

SWISS:

P01229

Gene ID:

3972

Database links:

[Entrez Gene: 3972](#)Human

[Entrez Gene: 16866](#)Mouse

[Entrez Gene: 25329](#)Rat

[Omim: 152780](#)Human

[SwissProt: P01229](#)Human

[SwissProt: O09108](#)Mouse

[SwissProt: P01230](#)Rat

[Unigene: 154704](#)Human

[Unigene: 57061](#)Mouse

[Unigene: 10108](#)Rat

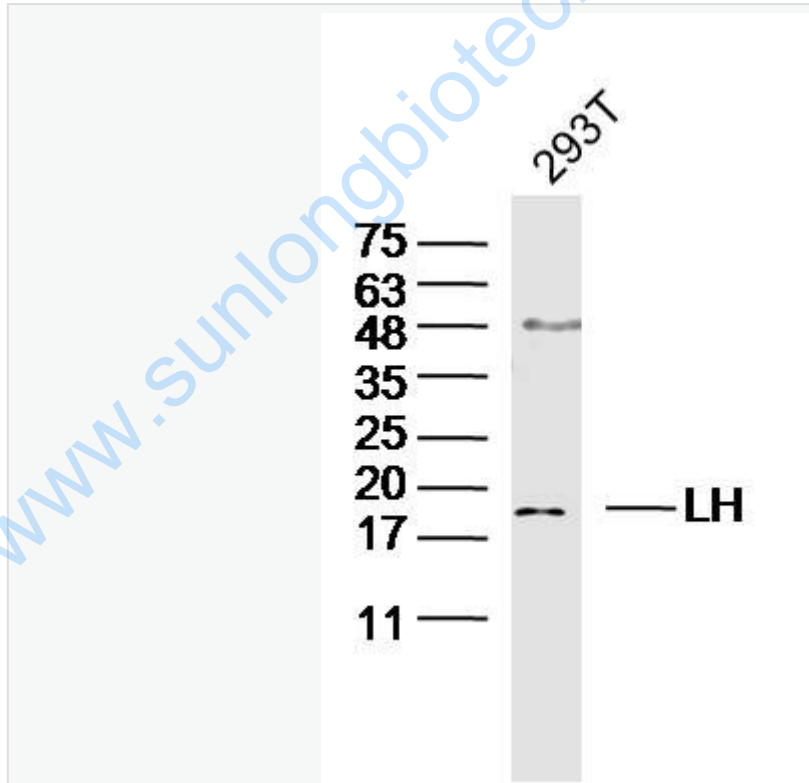
[Unigene: 224467](#)Rat

Important Note:

This product as supplied is intended for research use only, not for use in human, therapeutic or diagnostic applications.

LH和FSH都是垂体前叶产生的, 由两条多肽链(即 α 和 β 亚单位)经非共价键结合的glycoprotein。LH和FSH都是呈脉冲式分泌, 故有较明显的日内和日间变异。女性月经中期的LH高峰促成排卵, 男性LH主要刺激Leydig细胞产生睾丸酮, 又协同FSH促进精子成熟。与FSH同时测定, 是研究和判断下丘脑—垂体—性腺轴功能的常规检查方法。LH的测定在预测排卵时间上具有特殊重要意义, 它还可用于绝经期检查, 不孕症诊断和内分泌治疗的监测等。

Picture:



Sample: 293T(Human) Cell Lysate at 30 ug

Primary: Anti-CD200R (SL0952R) at 1/300 dilution

Secondary: IRDye800CW Goat Anti-Rabbit IgG at 1/20000 dilution

	Predicted band size: 16 kD Observed band size: 19 kD
--	--

www.sunlongbiotech.com