



Rabbit Anti-LPLUNC1 antibody

SL0976R

Product Name:	LPLUNC1
Chinese Name:	鼻咽癌基因抗体
Alias:	BPI fold containing family B, member 1; long palate, lung and nasal epithelium carcinoma associated 1 isoform 1; chromosome 20 open reading frame 114; C20orf114; Long palate; BPIB1_HUMAN; Lplunc1; lung and nasal epithelium carcinoma-associated protein 1; VEMSGP; Von Ebner minor salivary gland protein; MGC14597; MGC156708; RGD1563047; RP23-154J12.1; U46068.
Organism Species:	Rabbit
Clonality:	Polyclonal
React Species:	Human,Mouse,Rat,
Applications:	WB=1:500-2000ELISA=1:500-1000IHC-P=1:400-800IHC-F=1:400-800IF=1:100-500 (Paraffin sections need antigen repair) not yet tested in other applications. optimal dilutions/concentrations should be determined by the end user.
Molecular weight:	50kDa
Cellular localization:	Secretory protein
Form:	Lyophilized or Liquid
Concentration:	1mg/ml
immunogen:	KLH conjugated synthetic peptide derived from human LPLUNC1:21-120/484
Lsotype:	IgG
Purification:	affinity purified by Protein A
Storage Buffer:	0.01M TBS(pH7.4) with 1% BSA, 0.03% Proclin300 and 50% Glycerol.
Storage:	Store at -20 °C for one year. Avoid repeated freeze/thaw cycles. The lyophilized antibody is stable at room temperature for at least one month and for greater than a year when kept at -20°C. When reconstituted in sterile pH 7.4 0.01M PBS or diluent of antibody the antibody is stable for at least two weeks at 2-4 °C.
PubMed:	PubMed
Product Detail:	The protein encoded by this gene may be involved in the innate immune response to bacterial exposure in the mouth, nasal cavities, and lungs. The encoded protein is secreted and is a member of the BPI/LBP/PLUNC protein superfamily. This gene is

found with other members of the superfamily in a cluster on chromosome 20. [provided by RefSeq]

Function:

May play a role in innate immunity in mouth, nose and lungs.

Subcellular Location:

Secreted (By similarity).

Tissue Specificity:

Detected in trachea, nasal septal epithelium and lung.

Similarity:

Belongs to the BPI/LBP/Plunc superfamily. Plunc family.

SWISS:

Q8TDL5

Gene ID:

92747

Database links:

[Entrez Gene: 92747](#)Human

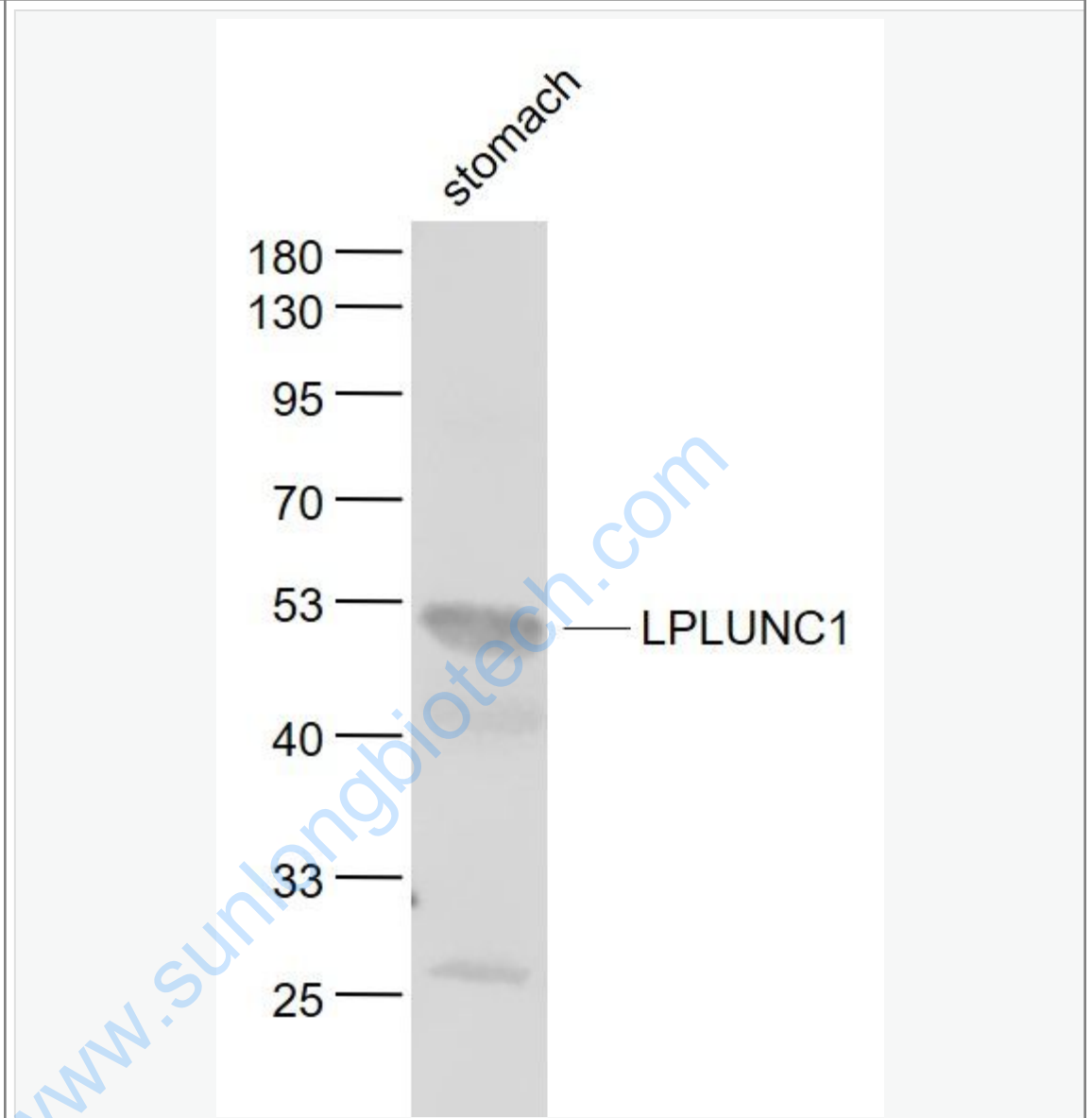
[SwissProt: Q8TDL5](#)Human

[Unigene: 65551](#)Human

Important Note:

This product as supplied is intended for research use only, not for use in human, therapeutic or diagnostic applications.

Picture:



Sample:

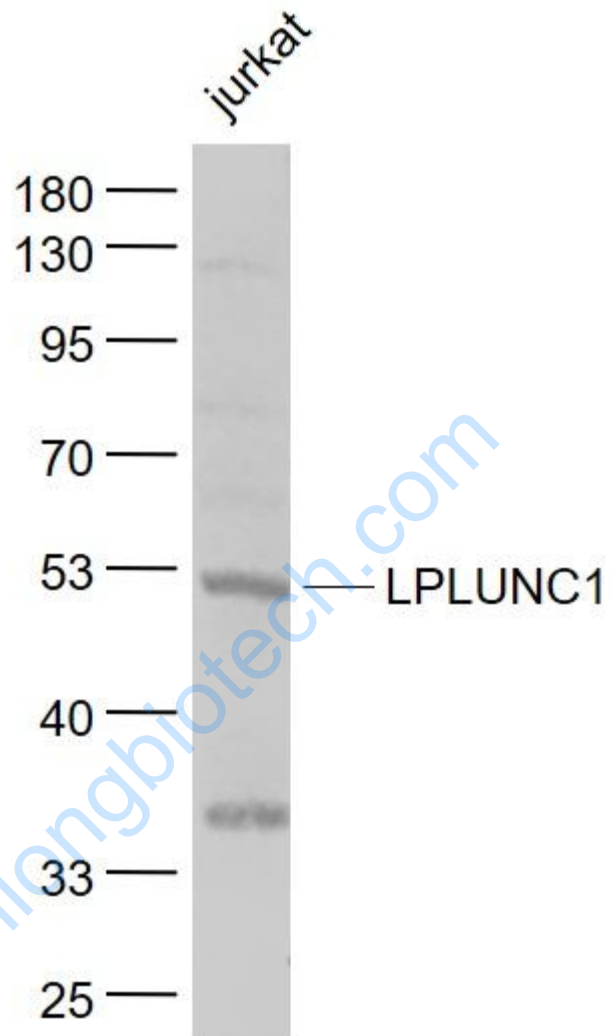
Stomach (Mouse) Lysate at 40 ug

Primary: Anti- LPLUNC1 (SL0976R) at 1/1000 dilution

Secondary: IRDye800CW Goat Anti-Rabbit IgG at 1/20000 dilution

Predicted band size: 50 kD

Observed band size: 50 kD



Sample:

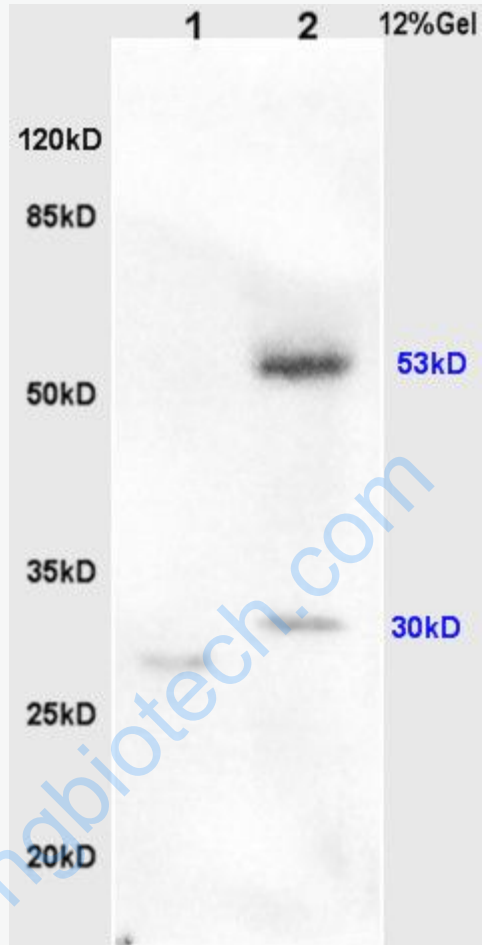
Jurkat(Human) Cell Lysate at 30 ug

Primary: Anti- LPLUNC1 (SL0976R) at 1/1000 dilution

Secondary: IRDye800CW Goat Anti-Rabbit IgG at 1/20000 dilution

Predicted band size: 50 kD

Observed band size: 50 kD



Sample:

Lane1: Lung(Rat) Lysate at 30 ug

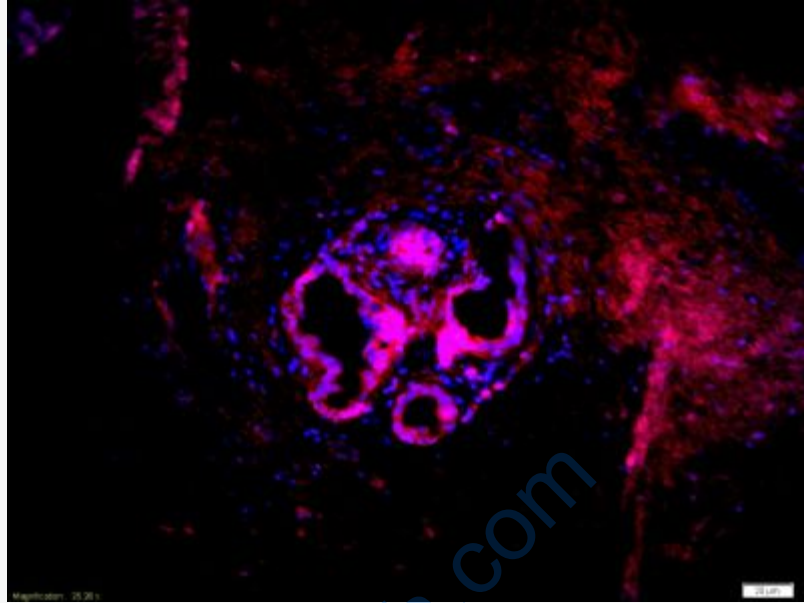
Lane2: Colon carcinoma(Human) Lysate at 30 ug

Primary: Anti-LPLUNC1 (SL0976R) at 1:200 dilution;

Secondary: HRP conjugated Goat-Anti-Rabbit IgG(SL0976R) at 1: 3000 dilution;

Predicted band size: 50kD

Observed band size: 53kD



Tissue/cell: human Nasal polyps tissue;4% Paraformaldehyde-fixed and paraffin-embedded;

Antigen retrieval: citrate buffer (0.01M, pH 6.0), Boiling bathing for 15min;

Blocking buffer (normal goat serum,C-0005) at 37°C for 20 min;

Incubation: Anti-LPLUNC1 Polyclonal Antibody, Unconjugated(SL0976R) 1:200, overnight at 4°C; The secondary antibody was Goat Anti-Rabbit IgG, Cy3 conjugated (SL0976R)used at 1:200 dilution for 40 minutes at 37°C.

DAPI(5ug/ml,blue,C-0033) was used to stain the cell nuclei