



Rabbit Anti-AVPR2 antibody

SL10014R

Product Name:	AVPR2
Chinese Name:	精氨酸加压素受体2抗体
Alias:	arginine vasopressin receptor 2; ADHR; Antidiuretic hormone recepto; Arginine vasopressin receptor 2; AVP R2; AVPR 2; AVPR V2; DI1; DIR 3; DIR; DIR3; MGC126533; MGC138386; NDI; Nephrogenic diabetes insipidus; Renal type arginine vasopressin recepto; V2R; Vasopressin V2 receptor.
Organism Species:	Rabbit
Clonality:	Polyclonal
React Species:	Human,Mouse,Rat,Dog,Cow,Horse,Sheep,
Applications:	WB=1:500-2000ELISA=1:500-1000IHC-F=1:400-800ICC=1:100-500IF=1:100-500 (Paraffin sections need antigen repair) not yet tested in other applications. optimal dilutions/concentrations should be determined by the end user.
Molecular weight:	40kDa
Cellular localization:	The cell membrane
Form:	Lyophilized or Liquid
Concentration:	1mg/ml
immunogen:	KLH conjugated synthetic peptide derived from human AVPR2:65-170/371<Extracellular>
Lsotype:	IgG
Purification:	affinity purified by Protein A
Storage Buffer:	0.01M TBS(pH7.4) with 1% BSA, 0.03% Proclin300 and 50% Glycerol.
Storage:	Store at -20 °C for one year. Avoid repeated freeze/thaw cycles. The lyophilized antibody is stable at room temperature for at least one month and for greater than a year when kept at -20°C. When reconstituted in sterile pH 7.4 0.01M PBS or diluent of antibody the antibody is stable for at least two weeks at 2-4 °C.
PubMed:	PubMed
Product Detail:	AVPR2 is a receptor for arginine vasopressin. The activity of this receptor is mediated by G proteins which activate adenylate cyclase. AVPR2 is expressed in the kidney tubule, predominantly in the distal convoluted tubule and collecting ducts. The AVPR2

receptor is also expressed outside the kidney although its tissue localization is uncertain.

Function:

Receptor for arginine vasopressin. The activity of this receptor is mediated by G proteins which activate adenylate cyclase.

Subcellular Location:

Cell membrane; Multi-pass membrane protein.

Tissue Specificity:

Kidney.

Similarity:

Belongs to the G-protein coupled receptor 1 family.
Vasopressin/oxytocin receptor subfamily.

SWISS:

P30518

Gene ID:

554

Database links:

[Entrez Gene: 554](#)Human

[Entrez Gene: 12000](#)Mouse

[Entrez Gene: 25108](#)Rat

[Omim: 300538](#)Human

[SwissProt: P30518](#)Human

[SwissProt: O88721](#)Mouse

[SwissProt: Q00788](#)Rat

[Unigene: 567240](#)Human

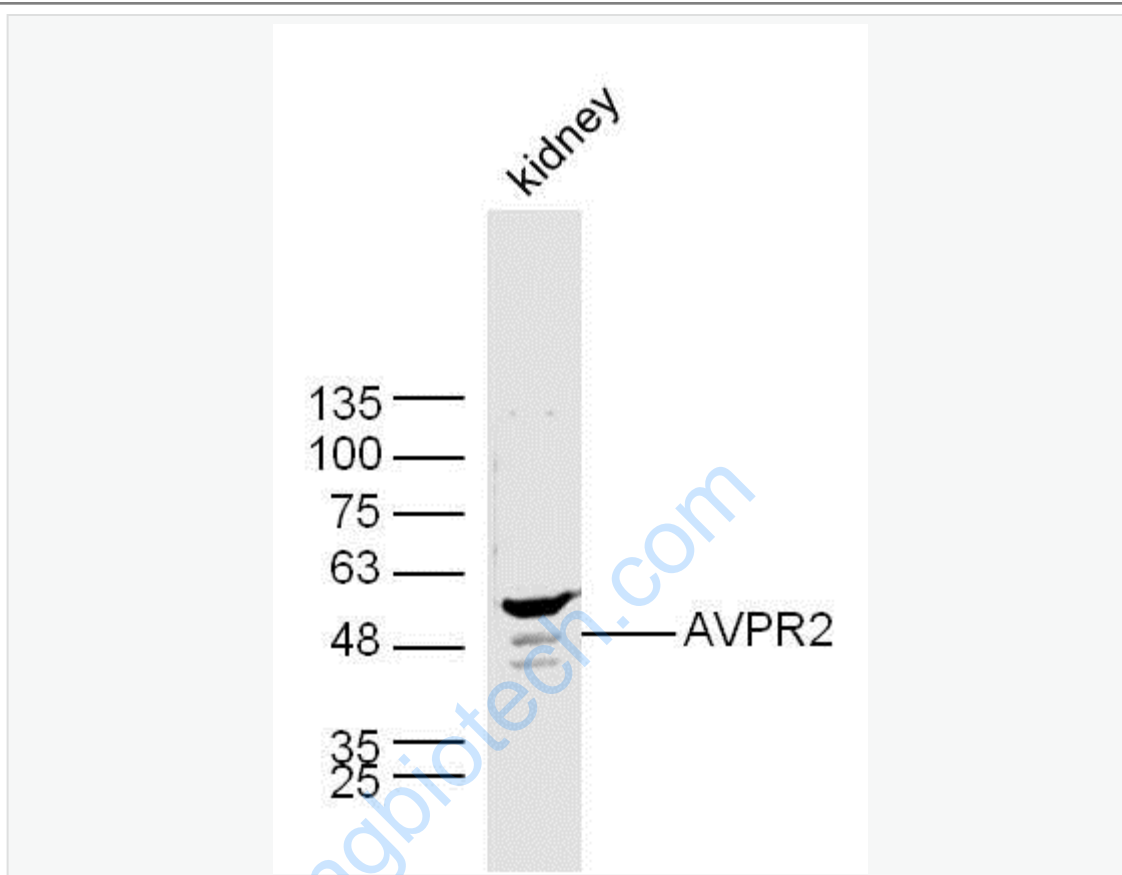
[Unigene: 383171](#)Mouse

[Unigene: 209041](#)Rat

Important Note:

This product as supplied is intended for research use only, not for use in human, therapeutic or diagnostic applications.

Picture:



Sample:

Kidney (Mouse) Lysate at 40 ug

Primary: Anti-AVPR2 (SL10014R) at 1/300 dilution

Secondary: IRDye800CW Goat Anti-Rabbit IgG at 1/20000 dilution

Predicted band size: 40 kD

Observed band size: 50 kD