

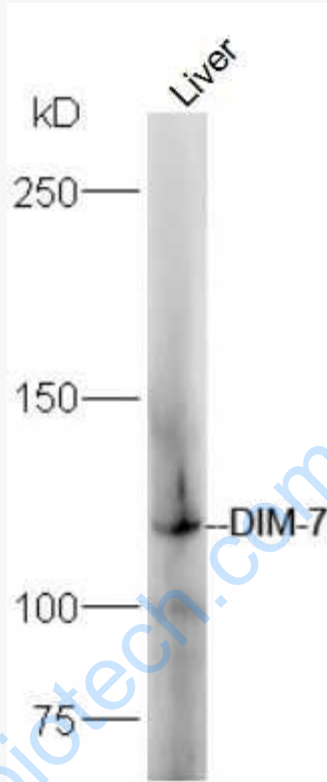


Rabbit Anti-DIM-7 antibody

SL10015R

Product Name:	DIM-7
Chinese Name:	DIM-7蛋白抗体
Alias:	moleskin; D-Importin 7/RanBP7; DIM-7; Dmel_CG7935; 61; CG7935; CIP-61; Dim-7; Dim7; DmRanBP7; Dmel\CG7935; Imp7; Imp7/8; Msk; S(ls)2; dim-7; dim7.
Organism Species:	Rabbit
Clonality:	Polyclonal
React Species:	Mouse,Fruit Fly,
Applications:	WB=1:500-2000ELISA=1:500-1000IHC-P=1:400-800IHC-F=1:400-800IF=1:100-500 (Paraffin sections need antigen repair) not yet tested in other applications. optimal dilutions/concentrations should be determined by the end user.
Molecular weight:	127kDa
Cellular localization:	The nucleuscytoplasmic
Form:	Lyophilized or Liquid
Concentration:	1mg/ml
immunogen:	KLH conjugated synthetic peptide derived from fruit fly DIM-7:401-500/1049
Lsotype:	IgG
Purification:	affinity purified by Protein A
Storage Buffer:	0.01M TBS(pH7.4) with 1% BSA, 0.03% Proclin300 and 50% Glycerol.
Storage:	Store at -20 °C for one year. Avoid repeated freeze/thaw cycles. The lyophilized antibody is stable at room temperature for at least one month and for greater than a year when kept at -20°C. When reconstituted in sterile pH 7.4 0.01M PBS or diluent of antibody the antibody is stable for at least two weeks at 2-4 °C.
PubMed:	PubMed
Product Detail:	

Picture:



Sample:

liver (Mouse) Lysate at 40 ug

Primary: Anti-DIM-7 (SL10015R) at 1/300 dilution

Secondary: IRDye800CW Goat Anti-Rabbit IgG at 1/20000 dilution

Predicted band size: 127 kD

Observed band size: 127 kD