



Rabbit Anti-Casein kappa antibody

SL10031R

Product Name:	Casein kappa
Chinese Name:	κ-酪蛋白抗体
Alias:	Casein-Kappa; CSN3; CSN10; CSNK; casein kappa; Casoxin-C; Casoxin-6; Casoxin-A; Casoxin-B; Casoplatelin; CASK BOVIN.
Organism Species:	Rabbit
Clonality:	Polyclonal
React Species:	Cow,Sheep,
Applications:	WB=1:500-2000ELISA=1:500-1000IHC-F=1:400-800 (Paraffin sections need antigen repair) not yet tested in other applications. optimal dilutions/concentrations should be determined by the end user.
Molecular weight:	19kDa
Cellular localization:	Secretory protein
Form:	Lyophilized or Liquid
Concentration:	1mg/ml
immunogen:	KLH conjugated synthetic peptide derived from cow Kappa-casein:111-170/190
Lsotype:	IgG
Purification:	affinity purified by Protein A
Storage Buffer:	0.01M TBS(pH7.4) with 1% BSA, 0.03% Proclin300 and 50% Glycerol.
Storage:	Store at -20 °C for one year. Avoid repeated freeze/thaw cycles. The lyophilized antibody is stable at room temperature for at least one month and for greater than a year when kept at -20°C. When reconstituted in sterile pH 7.4 0.01M PBS or diluent of antibody the antibody is stable for at least two weeks at 2-4 °C.
PubMed:	PubMed
Product Detail:	Function: Kappa-casein stabilizes micelle formation, preventing casein precipitation in milk. Casoxins A, B and C have opioid antagonist activity. Casoxin C causes biphasic ileal contractions through the binding to the complement C3a receptors.

Casoplatelin inhibits platelet aggregation.

Subunit:

Monomer or homomultimer; disulfide-linked.

Subcellular Location:

Secreted.

Tissue Specificity:

Mammary gland specific. Secreted in milk.

Similarity:

Belongs to the kappa-casein family.

SWISS:

P02668

Gene ID:

281718

Database links:

[Entrez Gene: 281728](#) Bos taurus

[Entrez Gene: 1448](#)Human

[Omid: 601695](#)Human

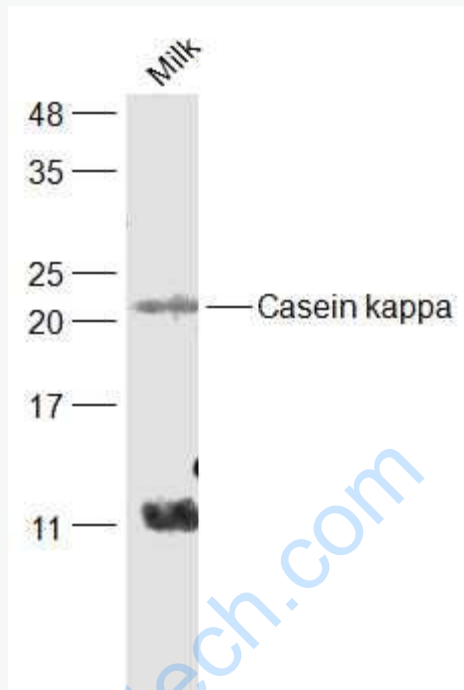
[SwissProt: P07498](#)Human

[Unigene: 54415](#)Human

Important Note:

This product as supplied is intended for research use only, not for use in human, therapeutic or diagnostic applications.

Picture:



Sample:

Milk(Cow) at 30 ug

Primary: Anti-Casein kappa (SL10031R) at 1/1000 dilution

Secondary: IRDye800CW Goat Anti-Rabbit IgG at 1/20000 dilution

Predicted band size: 19 kD

Observed band size: 21 kD