

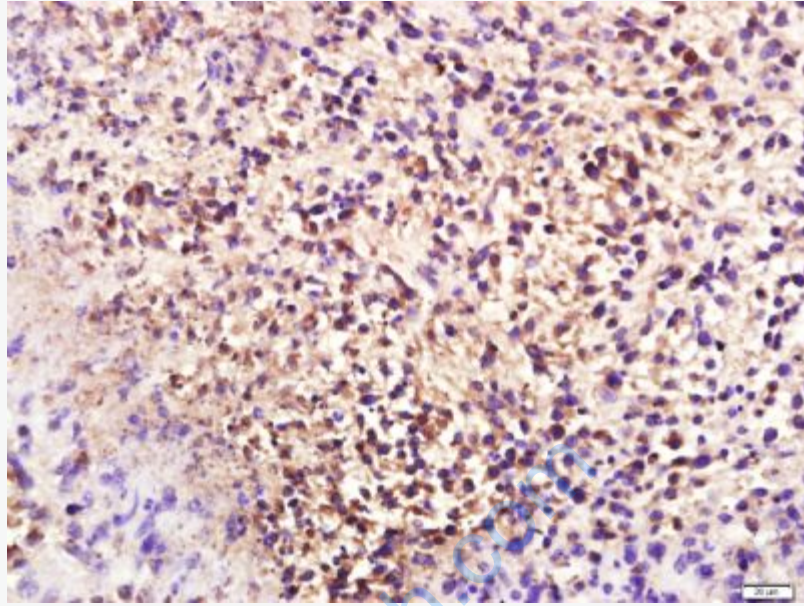


## Rabbit Anti-Alpha s2 Casein antibody

SL10034R

<b>Product Name:</b>	Alpha s2 Casein
<b>Chinese Name:</b>	$\alpha$ -s2酪蛋白抗体
<b>Alias:</b>	Alpha-s2-Casein; CSN1S2; CASA2 BOVIN; Casocidin-1; Casocidin-I.
<b>文献引用</b> <b>PubMed</b> :	<b>Specific References(1)</b>  SL10034R has been referenced in 1 publications. [IF=1.29]Gao, H. N., et al. "Leucine and histidine independently regulate milk protein synthesis in bovine mammary epithelial cells via mTOR signaling pathway." J. Zhejiang Univ.-Sci. B (Biomed. & Biotechnol.) 16.6 (2015): 560-572. <b>WB;Bovine.</b> <a href="#">PubMed:26055918</a>
<b>Organism Species:</b>	Rabbit
<b>Clonality:</b>	Polyclonal
<b>React Species:</b>	Mouse,Cow,Sheep,
<b>Applications:</b>	WB=1:500-2000ELISA=1:500-1000IHC-P=1:400-800IHC-F=1:400-800 (Paraffin sections need antigen repair) not yet tested in other applications. optimal dilutions/concentrations should be determined by the end user.
<b>Molecular weight:</b>	24kDa
<b>Cellular localization:</b>	Secretory protein
<b>Form:</b>	Lyophilized or Liquid
<b>Concentration:</b>	1mg/ml
<b>immunogen:</b>	KLH conjugated synthetic peptide derived from cow Alpha s2 Casein:165-203/222
<b>Lsotype:</b>	IgG
<b>Purification:</b>	affinity purified by Protein A
<b>Storage Buffer:</b>	0.01M TBS(pH7.4) with 1% BSA, 0.03% Proclin300 and 50% Glycerol.
<b>Storage:</b>	Store at -20 °C for one year. Avoid repeated freeze/thaw cycles. The lyophilized antibody is stable at room temperature for at least one month and for greater than a year when kept at -20°C. When reconstituted in sterile pH 7.4 0.01M PBS or diluent of antibody the antibody is stable for at least two weeks at 2-4 °C.

<b>PubMed:</b>	<a href="#">PubMed</a>
<b>Product Detail:</b>	<p>Important role in the capacity of milk to transport calcium phosphate. Casocidin-I inhibits the growth of E.coli and S.carnosus.</p> <p><b>Subcellular Location:</b> Secreted.</p> <p><b>Tissue Specificity:</b> Mammary gland specific. Secreted in milk.</p> <p><b>Similarity:</b> Belongs to the alpha-casein family.</p> <p><b>SWISS:</b> P02663</p> <p><b>Gene ID:</b> 282209</p> <p><b>Database links:</b> <a href="#">Entrez Gene: 282209</a> Bovine <a href="#">SwissProt: P02663</a> Bovine</p> <p><b>Important Note:</b> This product as supplied is intended for research use only, not for use in human, therapeutic or diagnostic applications.</p>



**Picture:**

Paraformaldehyde-fixed, paraffin embedded (Mouse mammary tumor); Antigen retrieval by boiling in sodium citrate buffer (pH6.0) for 15min; Block endogenous peroxidase by 3% hydrogen peroxide for 20 minutes; Blocking buffer (normal goat serum) at 37°C for 30min; Antibody incubation with (Alpha s2 Casein ) Polyclonal Antibody, Unconjugated (SL10034R) at 1:400 overnight at 4°C, followed by a conjugated secondary antibody (sp-0023) for 20 minutes and DAB staining.