



Rabbit Anti-EAAT1 antibody

SL1003R

Product Name:	EAAT1
Chinese Name:	胶质细胞谷氨酸运载蛋白1抗体
Alias:	EA6; EAAT1; Excitatory amino acid transporter 1; FLJ25094; GLAST; GLAST1; Glial high affinity glutamate transporter; High affinity neuronal glutamate transporter; Slc1a3; Sodium dependent glutamate/aspartate transporter; EAA1_HUMAN.
文献引用 PubMed :	<p>Specific References(2) SL1003R has been referenced in 2 publications.</p> <p>[IF=1.06]Xiao, Ke-Qing, et al. "Effect of subarachnoid nerve block anesthesia on glutamate transporter GLAST and GLT-1 expressions in rabbits." Asian Pacific Journal of Tropical Medicine (2015).IHC-P;Rabbit. PubMed:26276289</p> <p>[IF=0.66]Lu, Jun, et al. "Expression of GFAP, GLAST and GLT-1 in astrocytes in patients with mesial temporal lobe epilepsy." Journal of Hainan Medical University 22.2 (2016): 87-90.IHC-P;Human. PubMed:not posted yet</p>
Organism Species:	Rabbit
Clonality:	Polyclonal
React Species:	Human,Mouse,Rat,
Applications:	ELISA=1:500-1000IHC-P=1:400-800IHC-F=1:400-800Flow-Cyt=1μg/TestIF=1:100-500 (Paraffin sections need antigen repair) not yet tested in other applications. optimal dilutions/concentrations should be determined by the end user.
Molecular weight:	60kDa
Cellular localization:	The cell membrane
Form:	Lyophilized or Liquid
Concentration:	1mg/ml

immunogen:	KLH conjugated synthetic peptide derived from human EAAT1:301-400/512
Lsotype:	IgG
Purification:	affinity purified by Protein A
Storage Buffer:	0.01M TBS(pH7.4) with 1% BSA, 0.03% Proclin300 and 50% Glycerol.
Storage:	Store at -20 °C for one year. Avoid repeated freeze/thaw cycles. The lyophilized antibody is stable at room temperature for at least one month and for greater than a year when kept at -20°C. When reconstituted in sterile pH 7.4 0.01M PBS or diluent of antibody the antibody is stable for at least two weeks at 2-4 °C.
PubMed:	PubMed
Product Detail:	<p>This gene encodes a member of a member of a high affinity glutamate transporter family. This gene functions in the termination of excitatory neurotransmission in central nervous system. Mutations are associated with episodic ataxia, Type 6. Alternative splicing results in multiple transcript variants.[provided by RefSeq, Feb 2014]</p> <p>Function: Transports L-glutamate and also L- and D-aspartate. Essential for terminating the postsynaptic action of glutamate by rapidly removing released glutamate from the synaptic cleft. Acts as a symport by cotransporting sodium.</p> <p>Subcellular Location: Membrane; Multi-pass membrane protein</p> <p>Tissue Specificity: Highly expressed in cerebellum, but also found in frontal cortex, hippocampus and basal ganglia.</p> <p>Post-translational modifications: Glycosylated.</p> <p>DISEASE: Defects in SLC1A3 are the cause of episodic ataxia type 6 (EA6) [MIM:612656]. EA6 is characterized by episodic ataxia, seizures, migraine and alternating hemiplegia.</p> <p>Similarity: Belongs to the sodium:dicarboxylate (SDF) symporter (TC 2.A.23) family. SLC1A3 subfamily.</p> <p>SWISS: P43003</p> <p>Gene ID: 6507</p> <p>Database links:</p>

[Entrez Gene: 6507](#) Human

[Entrez Gene: 20512](#) Mouse

[Entrez Gene: 29483](#) Rat

[Omim: 600111](#) Human

[SwissProt: P43003](#) Human

[SwissProt: P56564](#) Mouse

[SwissProt: P24942](#) Rat

[Unigene: 481918](#) Human

[Unigene: 204834](#) Mouse

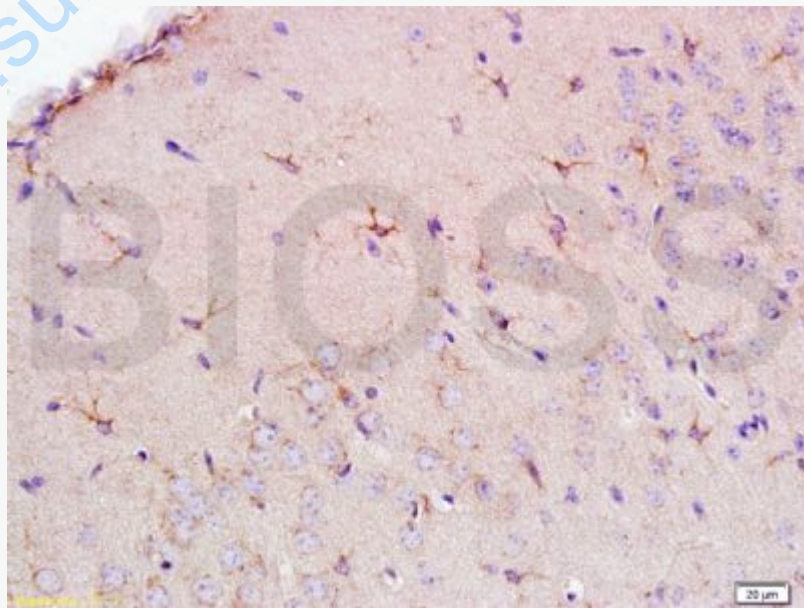
[Unigene: 34134](#) Rat

Important Note:

This product as supplied is intended for research use only, not for use in human, therapeutic or diagnostic applications.

EAAT-1主要用于神经胶质细胞的损伤及退变方面的研究.

Picture:



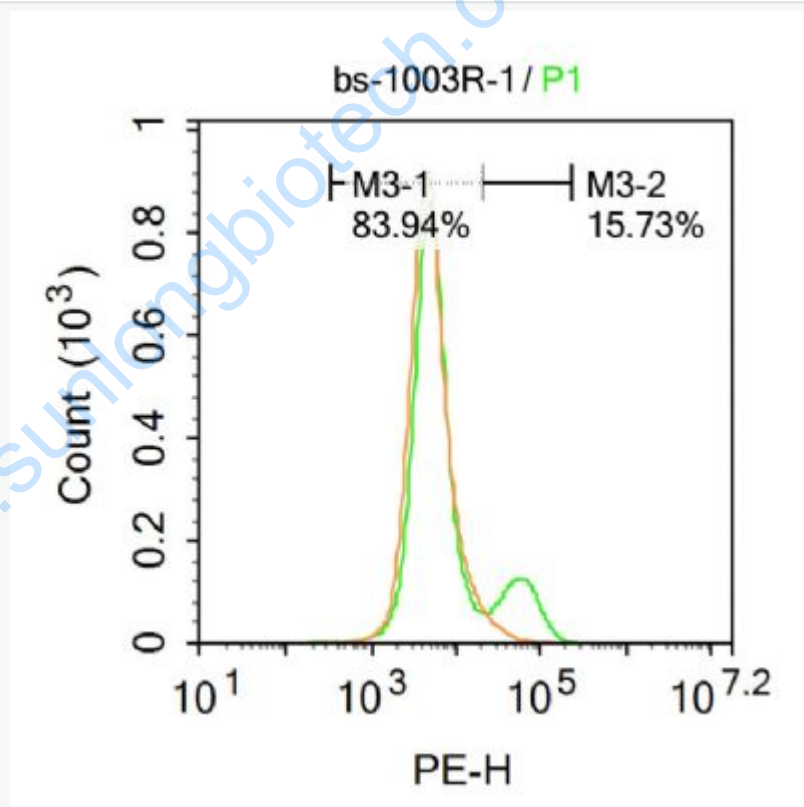
Tissue/cell: rat brain tissue(Glial cells); 4% Paraformaldehyde-fixed and paraffin-

embedded;

Antigen retrieval: citrate buffer (0.01M, pH 6.0), Boiling bathing for 15min; Block endogenous peroxidase by 3% Hydrogen peroxide for 30min; Blocking buffer (normal goat serum,C-0005) at 37°C for 20 min;

Incubation: Anti-NPY/Neuropeptide Y Polyclonal Antibody,

Unconjugated(SL1003R) 1:200, overnight at 4°C, followed by conjugation to the secondary antibody(SP-0023) and DAB(C-0010) staining



Blank control: U87MG.

Primary Antibody (green line): Rabbit Anti-EAAT1 antibody (SL1003R)

Dilution: 1µg /10⁶ cells;

Isotype Control Antibody (orange line): Rabbit IgG .

Secondary Antibody : Goat anti-rabbit IgG-PE

Dilution: 1 μ g /test.

The cells were incubated in 5%BSA to block non-specific protein-protein interactions for 30 min at room temperature .Cells stained with Primary Antibody for 30 min at room temperature. The secondary antibody used for 40 min at room temperature. Acquisition of 20,000 events was performed.

www.sunlongbiotech.com