



## Rabbit Anti-GPR48 antibody

SL10054R

|                               |   |
|-------------------------------|---|
| <b>Product Name:</b>          | GPR48   |
| <b>Chinese Name:</b>          | G protein-coupled receptor48抗体  |
| <b>Alias:</b>                 | G protein coupled receptor 48; G-protein coupled receptor 48; GPR48; GPCR GPR48; Leucine-rich repeat-containing G protein-coupled receptor 4; Leucine-rich repeat-containing G-protein coupled receptor 4; LGR4; LGR4_HUMAN.  |
| <b>Organism Species:</b>      | Rabbit  |
| <b>Clonality:</b>             | Polyclonal  |
| <b>React Species:</b>         | Human,Mouse,Rat,Dog,Pig,Cow,Horse,Rabbit,   |
| <b>Applications:</b>          | WB=1:500-2000ELISA=1:500-1000Flow-Cyt=2µg/Test<br>not yet tested in other applications.<br>optimal dilutions/concentrations should be determined by the end user.   |
| <b>Molecular weight:</b>      | 105kDa  |
| <b>Cellular localization:</b> | The cell membrane   |
| <b>Form:</b>                  | Lyophilized or Liquid   |
| <b>Concentration:</b>         | 1mg/ml  |
| <b>immunogen:</b>             | KLH conjugated synthetic peptide derived from human LGR4:301-400/951<Extracellular>   |
| <b>Lsotype:</b>               | IgG   |
| <b>Purification:</b>          | affinity purified by Protein A  |
| <b>Storage Buffer:</b>        | 0.01M TBS(pH7.4) with 1% BSA, 0.03% Proclin300 and 50% Glycerol.  |
| <b>Storage:</b>               | Store at -20 °C for one year. Avoid repeated freeze/thaw cycles. The lyophilized antibody is stable at room temperature for at least one month and for greater than a year when kept at -20°C. When reconstituted in sterile pH 7.4 0.01M PBS or diluent of antibody the antibody is stable for at least two weeks at 2-4 °C.   |
| <b>PubMed:</b>                | <a href="#">PubMed</a>  |
| <b>Product Detail:</b>        | G protein-coupled receptors (GPCRs), also designated seven transmembrane (7TM) receptors or heptahelical receptors, interact with G proteins (heterotrimeric GTPases) to synthesize intracellular second messengers, such as diacylglycerol, cyclic AMP, inositol phosphates and calcium ions. Their diverse biological functions range from vision and olfaction to neuronal and endocrine signaling and are involved in many pathological |

conditions. LGR4 (leucine-rich repeat-containing G protein-coupled receptor 4), also known as GPR48, is a 951 amino acid multi-pass membrane protein that contains 15 LRR (leucine-rich repeats) and belongs to the GPCR family. Expressed in multiple tissues, including testis, ovary, placenta, stomach, heart, kidney, pancreas and spleen, LGR4 functions as an orphan receptor that may be involved in physiologic activities throughout the cell. LGR4 is overexpressed in various cancer types and is thought to enhance carcinoma invasiveness and metastasis, suggesting an important role in tumor progression.

**Function:**

Orphan receptor.

**Subcellular Location:**

Cell membrane.

**Tissue Specificity:**

Expressed in multiple steroidogenic tissues: placenta, ovary, testis and adrenal.

Expressed also in spinal cord, thyroid, stomach, trachea, heart, pancreas, kidney, prostate and spleen.

**Similarity:**

Belongs to the G-protein coupled receptor 1 family.

Contains 15 LRR (leucine-rich) repeats.

Contains 1 LRRNT domain.

**SWISS:**

Q9BXB1

**Gene ID:**

55366

**Database links:**

[Entrez Gene: 55366](#)Human

[Entrez Gene: 107515](#)Mouse

[Entrez Gene: 286994](#)Rat

[Omim: 606666](#)Human

[SwissProt: Q9BXB1](#)Human

[SwissProt: A2ARI4](#)Mouse

[SwissProt: Q9Z2H4](#)Rat

[Unigene: 502176](#)Human

[Unigene: 277351](#)Mouse

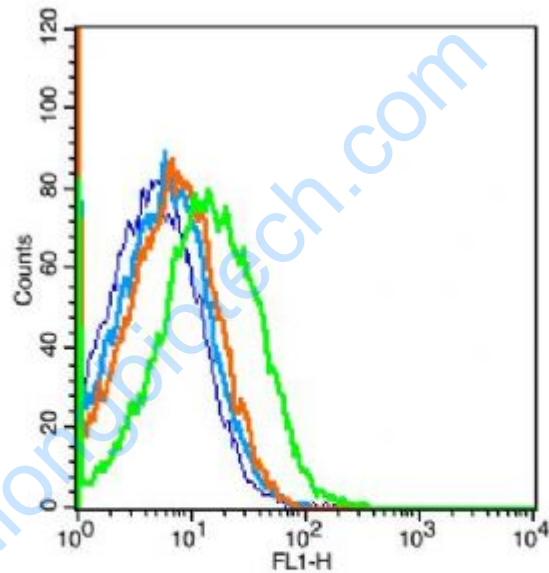
[Unigene: 480424](#)Mouse

[Unigene: 162671](#)Rat

**Important Note:**

This product as supplied is intended for research use only, not for use in human, therapeutic or diagnostic applications.

Picture:



| Key | Name                             | Parameter | Gate |
|-----|----------------------------------|-----------|------|
| —   | (mo)nephrocyte-blank.040         | FL1-H     | G1   |
| —   | bs-0295G-FITC-(mo)ne#1E7D64.041  | FL1-H     | G1   |
| —   | bs-0295P-(FITC)-(mo)#1E7D66.042  | FL1-H     | G1   |
| —   | bs-10054R-(FITC)-(mo)#1E7D6C.045 | FL1-H     | G1   |

Positive control: mouse nephrocyte(2% Paraformaldehyde-fixed )

Isotype Control Antibody: Rabbit IgG; Dilution: 1µg in 100 µl 1 X PBS containing 0.5% BSA

Secondary Antibody: Goat anti-rabbit IgG-FITC; Dilution: 1:200 in 1 X PBS containing 0.5% BSA

Primary Antibody: rabbit Anti-GPR48 (SL10054R); Dilution: 1µg in 100 µl 1X PBS

|  |                     |
|--|---------------------|
|  | containing 0.5% BSA |
|--|---------------------|

[www.sunlongbiotech.com](http://www.sunlongbiotech.com)