



## Rabbit Anti-Nesfatin-1 antibody

SL10068R

<b>Product Name:</b>	Nesfatin-1
<b>Chinese Name:</b>	新的饱食分子蛋白抗体
<b>Alias:</b>	DNA binding protein NEFA; DNA-binding protein NEFA; Gastric cancer antigen Zg4; NEFA; Nefastin 1; Nefastin-1; Nefastin1; Nucb2; NUCB2_HUMAN; Nucleobindin-2; Nucleobinding 2.
<b>Organism Species:</b>	Rabbit
<b>Clonality:</b>	Polyclonal
<b>React Species:</b>	Human,Mouse,Rat,Dog,
<b>Applications:</b>	ELISA=1:500-1000IHC-P=1:400-800IHC-F=1:400-800ICC=1:100-500IF=1:100-500 (Paraffin sections need antigen repair) not yet tested in other applications. optimal dilutions/concentrations should be determined by the end user.
<b>Molecular weight:</b>	10/47kDa
<b>Cellular localization:</b>	Secretory protein
<b>Form:</b>	Lyophilized or Liquid
<b>Concentration:</b>	1mg/ml
<b>immunogen:</b>	KLH conjugated synthetic peptide derived from human Nesfatin-1:31-130/420
<b>Lsotype:</b>	IgG
<b>Purification:</b>	affinity purified by Protein A
<b>Storage Buffer:</b>	Preservative: 15mM Sodium Azide, Constituents: 1% BSA, 0.01M PBS, pH 7.4
<b>Storage:</b>	Store at -20 °C for one year. Avoid repeated freeze/thaw cycles. The lyophilized antibody is stable at room temperature for at least one month and for greater than a year when kept at -20°C. When reconstituted in sterile pH 7.4 0.01M PBS or diluent of antibody the antibody is stable for at least two weeks at 2-4 °C.
<b>PubMed:</b>	<a href="#">PubMed</a>
<b>Product Detail:</b>	This gene encodes a protein with a suggested role in calcium level maintenance, eating regulation in the hypothalamus, and release of tumor necrosis factor from vascular endothelial cells. This protein binds calcium and has EF-folding domains. [provided by RefSeq, Oct 2011].

**Function:**

Calcium-binding protein. May have a role in calcium homeostasis.

Nesfatin-1: Anorexigenic peptide, seems to play an important role in hypothalamic pathways regulating food intake and energy homeostasis, acting in a leptin-independent manner. May also exert hypertensive roles and modulate blood pressure through directly acting on peripheral arterial resistance.

**Subcellular Location:**

Golgi apparatus. Membrane; Peripheral membrane protein. Cytoplasm. Secreted. Endoplasmic reticulum. Nucleus envelope. Note=Golgi retention is mediated by its N-terminal region.

**Tissue Specificity:**

Predominantly expressed in spleen, testis and normal stomach.

**Similarity:**

Belongs to the nucleobindin family.

Contains 2 EF-hand domains.

**SWISS:**

P80303

**Gene ID:**

4925

**Database links:**

[Entrez Gene: 4925](#)Human

[Entrez Gene: 53322](#)Mouse

[Entrez Gene: 59295](#)Rat

[Omim: 608020](#)Human

[SwissProt: P80303](#)Human

[SwissProt: P81117](#)Mouse

[SwissProt: Q9JI85](#)Rat

[Unigene: 654599](#)Human

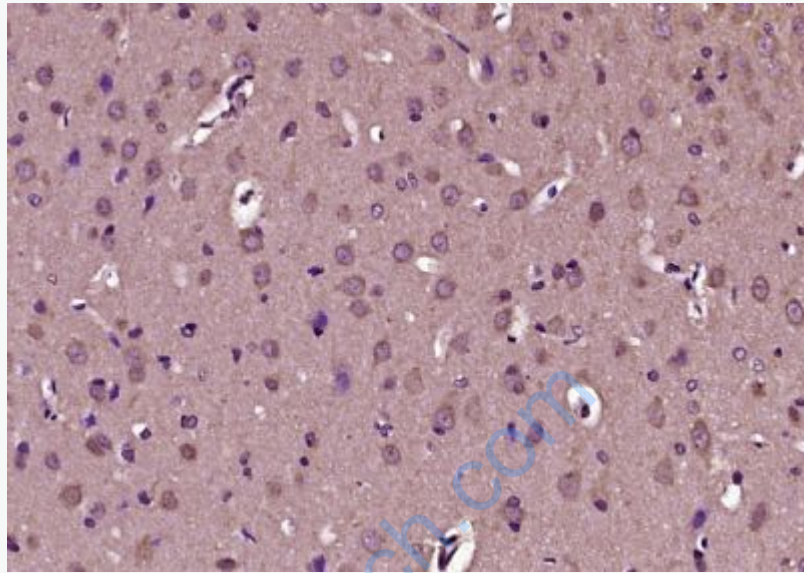
[Unigene: 9901](#)Mouse

[Unigene: 41602](#)Rat

**Important Note:**

This product as supplied is intended for research use only, not for use in human,

therapeutic or diagnostic applications.



**Picture:**

Paraformaldehyde-fixed, paraffin embedded (rat brain tissue); Antigen retrieval by boiling in sodium citrate buffer (pH6.0) for 15min; Block endogenous peroxidase by 3% hydrogen peroxide for 20 minutes; Blocking buffer (normal goat serum) at 37°C for 30min; Antibody incubation with (Nesfatin-1) Polyclonal Antibody, Unconjugated (SL10068R) at 1:200 overnight at 4°C, followed by operating according to SP Kit(Rabbit) (sp-0023) instructions and DAB staining.