



Rabbit Anti-IL-31 antibody

SL10070R

Product Name:	IL-31
Chinese Name:	白细胞介素31抗体
Alias:	Interleukin-31; 1700013B14RIK; IL31; interleukin-31 precursor; IL 31; IL-31; IL31_HUMAN; IL31_MOUSE; Interleukin 31.
Organism Species:	Rabbit
Clonality:	Polyclonal
React Species:	Mouse,Rat,
Applications:	WB=1:500-2000ELISA=1:500-1000IHC-P=1:400-800IHC-F=1:400-800ICC=1:100-500IF=1:100-500 (Paraffin sections need antigen repair) not yet tested in other applications. optimal dilutions/concentrations should be determined by the end user.
Molecular weight:	16kDa
Cellular localization:	Secretory protein
Form:	Lyophilized or Liquid
Concentration:	1mg/ml
immunogen:	KLH conjugated synthetic peptide derived from rat IL-31:21-120/163
Lsotype:	IgG
Purification:	affinity purified by Protein A
Storage Buffer:	0.01M TBS(pH7.4) with 1% BSA, 0.03% Proclin300 and 50% Glycerol.
Storage:	Store at -20 °C for one year. Avoid repeated freeze/thaw cycles. The lyophilized antibody is stable at room temperature for at least one month and for greater than a year when kept at -20°C. When reconstituted in sterile pH 7.4 0.01M PBS or diluent of antibody the antibody is stable for at least two weeks at 2-4 °C.
PubMed:	PubMed
Product Detail:	IL31, which is made principally by activated Th2-type T cells, interacts with a heterodimeric receptor consisting of IL31RA (MIM 609510) and OSMR (MIM 601743) that is constitutively expressed on epithelial cells and keratinocytes. IL31 may be involved in the promotion of allergic skin disorders and in regulating other allergic diseases, such as asthma (Dillon et al., 2004 [PubMed 15184896]).[supplied by OMIM, Mar 2008]

Function:

Activates STAT3 and possibly STAT1 and STAT5 through the IL31 heterodimeric receptor composed of IL31RA and OSMR. IL31 may function in skin immunity.

Subcellular Location:

Secreted.

Tissue Specificity:

Detected at low levels in testis, bone marrow, skeletal muscle, kidney, colon, thymus, small intestine and trachea.

SWISS:

Q6EBC2

Gene ID:

76399

Database links:

[Entrez Gene: 76399](#)Mouse

[Entrez Gene: 690028](#)Rat

[SwissProt: Q6EAL8](#)Mouse

[Unigene: 75049](#)Mouse

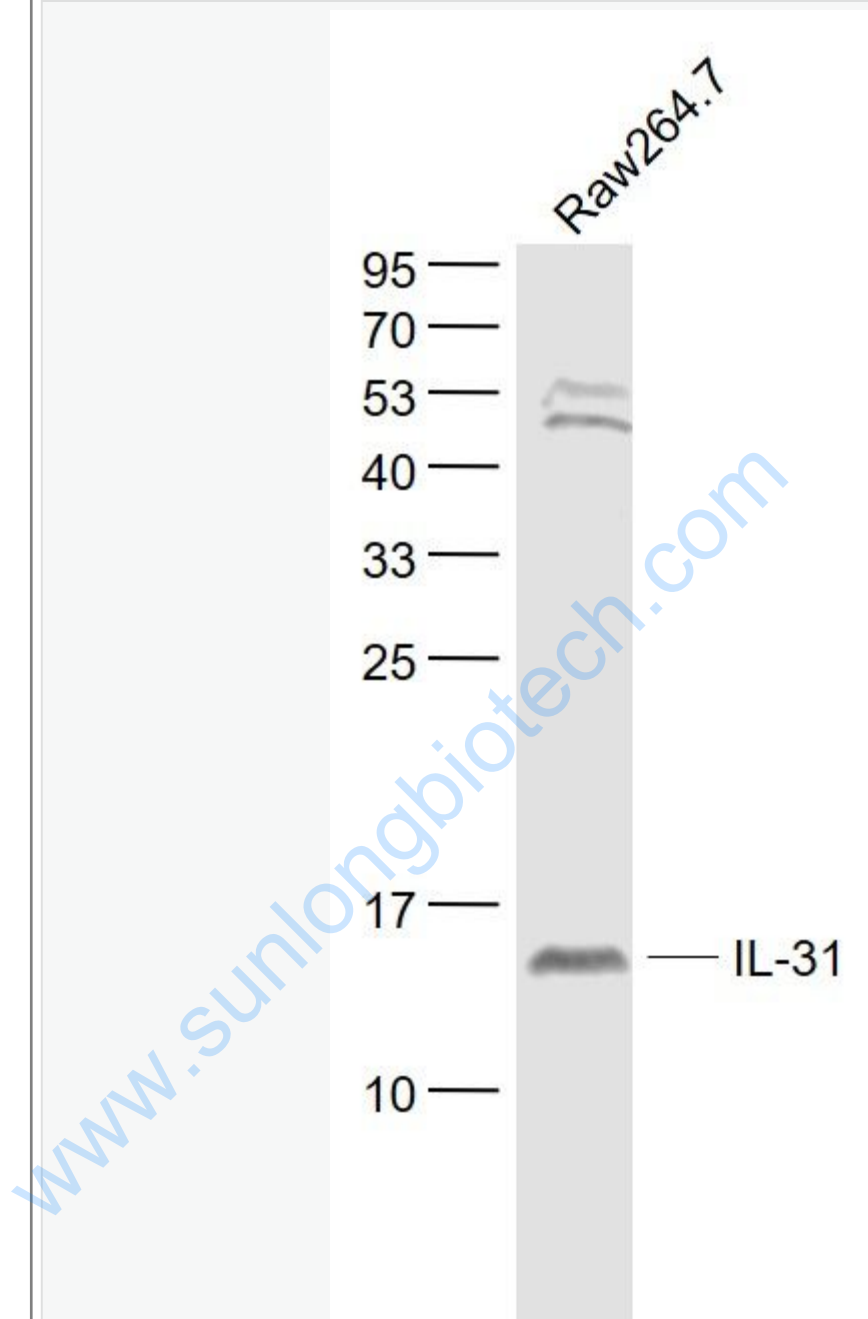
Important Note:

This product as supplied is intended for research use only, not for use in human, therapeutic or diagnostic applications.

IL-31是一种新型T细胞衍生的cell factor,其功能受体复合物是由IL-31RA/GPL/GLM

R和OSMR组成的异二聚体。它们在过敏性和非过敏性疾病中起重要作用。

Picture:



Sample:

Raw264.7(Mouse) Cell Lysate at 30 ug

Primary: Anti- IL-31 (SL10070R) at 1/1000 dilution

Secondary: IRDye800CW Goat Anti-Rabbit IgG at 1/20000 dilution

	<p>Predicted band size: 16 kD</p>
--	-----------------------------------

	<p>Observed band size: 16 kD</p>
--	----------------------------------

www.sunlongbiotech.com