



Rabbit Anti-GM-CSFR alpha antibody

SL10078R

Product Name:	GM-CSFR alpha
Chinese Name:	粒细胞-巨噬细胞集落刺激因子受体 α 抗体
Alias:	GM-CSF Receptor alpha; CD116; CD116 antigen; Colony Stimulating Factor 2 Receptor Alpha; Colony stimulating factor 2 receptor alpha chain; CSF 2R; CSF2RA; CSF2RAX; CSF2RAY; CSF2RX; CSF2RY; GM CSF R alpha; GM CSF receptor alpha subunit; GMCSFR; GMR; Granulocyte Macrophage Colony Stimulating Factor Receptor Alpha Chain; GM-CSF-R-alpha; GMCSFR-alpha; GMR-alpha; CDw116; CSF2R_HUMAN; Granulocyte-macrophage colony-stimulating factor receptor subunit alpha.
Organism Species:	Rabbit
Clonality:	Polyclonal
React Species:	Human,Mouse,Dog,Cow,Horse,
Applications:	WB=1:500-2000ELISA=1:500-1000IHC-P=1:400-800IHC-F=1:400-800ICC=1:100-500IF=1:100-500 (Paraffin sections need antigen repair) not yet tested in other applications. optimal dilutions/concentrations should be determined by the end user.
Molecular weight:	42kDa
Cellular localization:	The cell membraneSecretory protein
Form:	Lyophilized or Liquid
Concentration:	1mg/ml
immunogen:	KLH conjugated synthetic peptide derived from human GM-CSFR alpha:101-200/400<Extracellular>
Lsotype:	IgG
Purification:	affinity purified by Protein A
Storage Buffer:	0.01M TBS(pH7.4) with 1% BSA, 0.03% Proclin300 and 50% Glycerol.
Storage:	Store at -20 °C for one year. Avoid repeated freeze/thaw cycles. The lyophilized antibody is stable at room temperature for at least one month and for greater than a year when kept at -20°C. When reconstituted in sterile pH 7.4 0.01M PBS or diluent of antibody the antibody is stable for at least two weeks at 2-4 °C.
PubMed:	PubMed

The protein encoded by this gene is the alpha subunit of the heterodimeric receptor for colony stimulating factor 2, a cytokine which controls the production, differentiation, and function of granulocytes and macrophages. The encoded protein is a member of the cytokine family of receptors. This gene is found in the pseudoautosomal region (PAR) of the X and Y chromosomes. Multiple transcript variants encoding different isoforms have been found for this gene, with some of the isoforms being membrane-bound and others being soluble. [provided by RefSeq].

Function:

Low affinity receptor for granulocyte-macrophage colony-stimulating factor. Transduces a signal that results in the proliferation, differentiation, and functional activation of hematopoietic cells.

Subunit:

Heterodimer of an alpha and a beta subunit. The beta subunit is common to the IL3, IL5 and GM-CSF receptors. The signaling GM-CSF receptor complex is a dodecamer of two head-to-head hexamers of two alpha, two beta, and two ligand subunits.

Subcellular Location:

Cell membrane; Single-pass type I membrane protein. Isoform 3: Secreted (Probable). Isoform 4: Secreted (Probable). Isoform 6: Secreted (Probable).

DISEASE:

Defects in CSF2RA are the cause of pulmonary surfactant metabolism dysfunction type 4 (SMDP4) [MIM:300770]. A rare lung disorder due to impaired surfactant homeostasis. It is characterized by alveolar filling with floccular material that stains positive using the periodic acid-Schiff method and is derived from surfactant phospholipids and protein components. Excessive lipoproteins accumulation in the alveoli results in severe respiratory distress. Similarity : Belongs to the type I cytokine receptor family. Type 5 subfamily.

SWISS:

P15509

Gene ID:

1438

Database links:

[Entrez Gene: 1438](#) Human

[Entrez Gene: 12982](#) Mouse

[Omim: 306250](#) Human

[SwissProt: P15509](#) Human

Product Detail:

[SwissProt: Q00941](#) Mouse

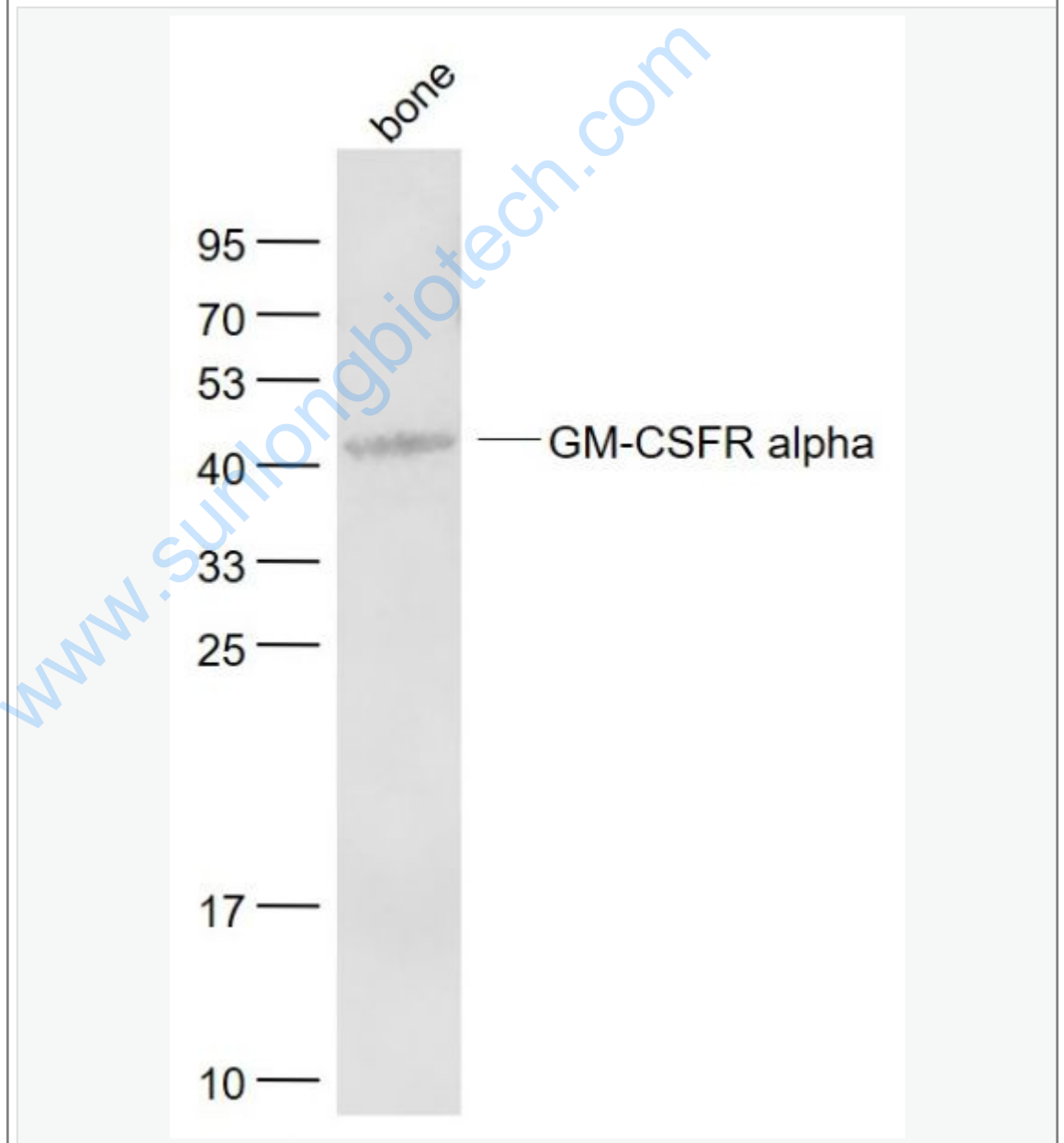
[Unigene: 520937](#) Human

[Unigene: 287228](#) Mouse

Important Note:

This product as supplied is intended for research use only, not for use in human, therapeutic or diagnostic applications.

Picture:



Sample:

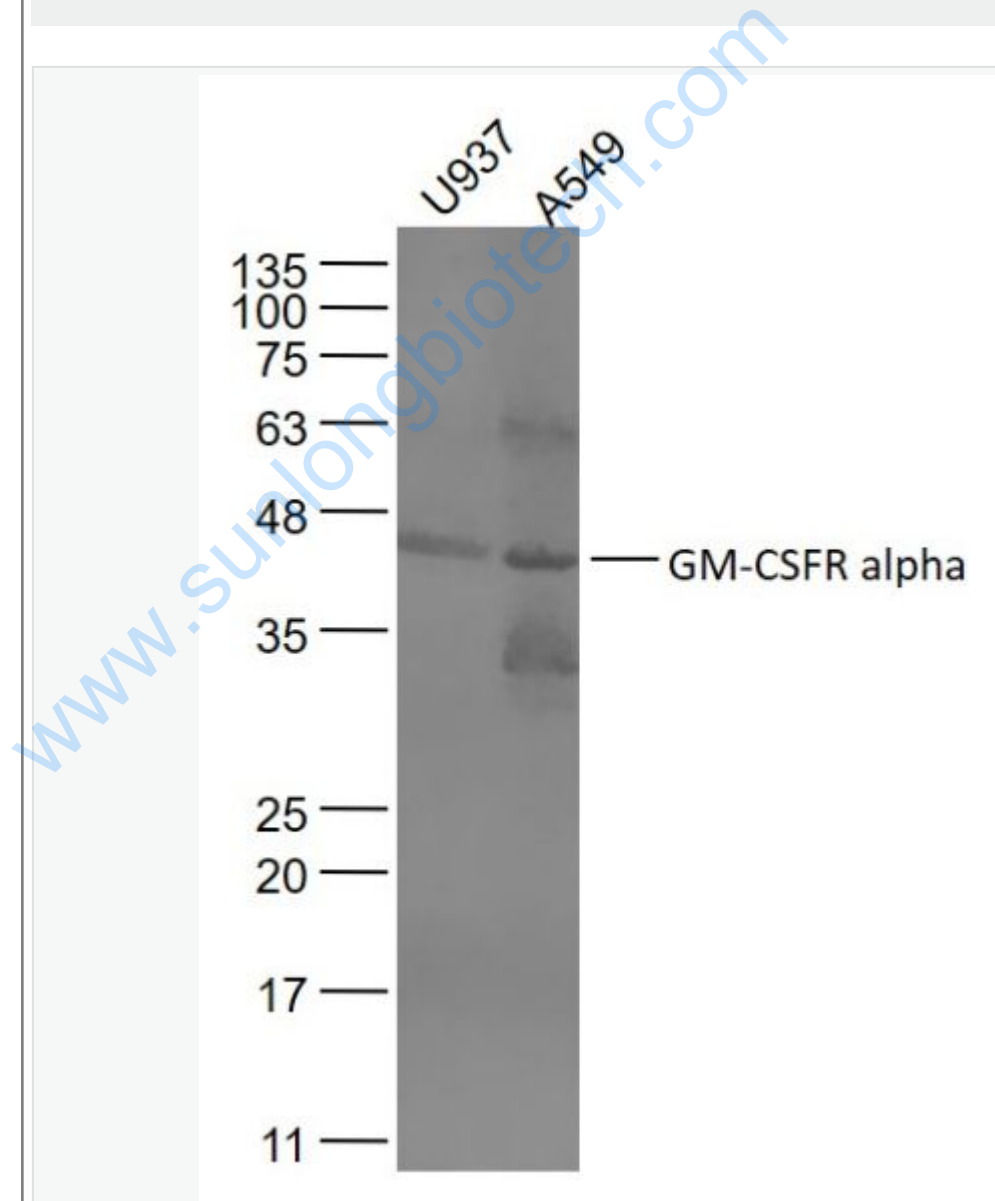
Bone (Mouse) Lysate at 40 ug

Primary: Anti- GM-CSFR alpha (SL10078R) at 1/1000 dilution

Secondary: IRDye800CW Goat Anti-Rabbit IgG at 1/20000 dilution

Predicted band size: 42 kD

Observed band size: 42 kD



Sample:

U937(Human) Cell Lysate at 30 ug

A549 (Human) Cell Lysate at 30 ug

Primary: Anti- GM-CSFR alpha (SL10078R) at 1/1000 dilution

Secondary: IRDye800CW Goat Anti-Rabbit IgG at 1/20000 dilution

Predicted band size: 42 kD

Observed band size: 42 kD

www.sunlongbiotech.com