



## Rabbit Anti-Dopamine D2 Receptor antibody

SL1008R

<b>Product Name:</b>	Dopamine D2 Receptor
<b>Chinese Name:</b>	多巴胺受体D2抗体
<b>Alias:</b>	D2DR; D2 dopamine receptor; D2R; Dopamine receptor D2; Dopamine Receptor D2L; DRD 2; DRD2; DRD2_HUMAN.
<b>文献引用</b> 	<p><b>Specific References(6)</b> SL1008R has been referenced in 6 publications.</p> <p><b>[IF=2.35]</b>Xu, Jiao-jiao, et al. "Dopamine D1 receptor activation induces dehydroepiandrosterone sulfotransferase (SULT2A1) in HepG2 cells." Acta Pharmacologica Sinica (2014).<b>WB;Human.</b> <a href="#">PubMed:24909515</a></p> <p><b>[IF=0.93]</b>Mao, Min, et al. "Dopamine D2 receptor blocker thioridazine induces cell death in human uterine cervical carcinoma cell line SiHa." Journal of Obstetrics and Gynaecology Research (2015).<b>IHC-P;Human.</b> <a href="#">PubMed:25832589</a></p> <p><b>[IF=3.26]</b>Salgado, R., et al. "Perfluorooctane sulfonate (PFOS) exposure could modify the dopaminergic system in several limbic brain regions." Toxicology Letters(2015).<b>WB;Rat.</b> <a href="#">PubMed:26529483</a></p> <p><b>[IF=8.46]</b>Zhang, Q. B., et al. "Moderate swimming suppressed the growth and metastasis of the transplanted liver cancer in mice model: with reference to nervous system." Oncogene (2016).<b>WB;Human.</b> <a href="#">PubMed:26686088</a></p> <p><b>[IF=0.64]</b>Qian, Weibin, et al. "Effect of Gingerol on Cisplatin-Induced Pica Analogous</p>

	<p>to Emesis Via Modulating Expressions of Dopamine 2 Receptor, Dopamine Transporter and Tyrosine Hydroxylase in the Vomiting Model of Rats."Yonago Acta medica 59 (2016): 100-110.IHC-F;Rat.</p> <p style="text-align: right;"><a href="#">PubMed:27493480</a></p> <p><b>[IF=2.88]</b>Yano, Shigetoshi, et al. "Mixed pituitary gangliocytom and prolactinoma resistant to the cabergoline treatment: A case report." World Neurosurgery(2016).IHC-P;Human.</p> <p style="text-align: right;"><a href="#">PubMed:27535625</a></p>
<b>Organism Species:</b>	Rabbit
<b>Clonality:</b>	Polyclonal
<b>React Species:</b>	Human,Mouse,Rat,
<b>Applications:</b>	WB=1:500-2000ELISA=1:500-1000IHC-P=1:400-800IHC-F=1:400-800IF=1:200-800 (Paraffin sections need antigen repair) not yet tested in other applications. optimal dilutions/concentrations should be determined by the end user.
<b>Molecular weight:</b>	51kDa
<b>Cellular localization:</b>	cytoplasmicThe cell membrane
<b>Form:</b>	Lyophilized or Liquid
<b>Concentration:</b>	1mg/ml
<b>immunogen:</b>	KLH conjugated synthetic peptide derived from human DRD2:201-300/443<Cytoplasmic>
<b>Lsotype:</b>	IgG
<b>Purification:</b>	affinity purified by Protein A
<b>Storage Buffer:</b>	0.01M TBS(pH7.4) with 1% BSA, 0.03% Proclin300 and 50% Glycerol.
<b>Storage:</b>	Store at -20 °C for one year. Avoid repeated freeze/thaw cycles. The lyophilized antibody is stable at room temperature for at least one month and for greater than a year when kept at -20°C. When reconstituted in sterile pH 7.4 0.01M PBS or diluent of antibody the antibody is stable for at least two weeks at 2-4 °C.
<b>PubMed:</b>	<a href="#">PubMed</a>
<b>Product Detail:</b>	<p>7 transmembrane receptor (rhodopsin family). This family contains, amongst other G-protein-coupled receptors (GCPRs), members of the opsin family, which have been considered to be typical members of the rhodopsin superfamily. They share several motifs, mainly the seven transmembrane helices, GCPRs of the rhodopsin superfamily. All opsins bind a chromophore, such as 11-cis-retinal. The function of most opsins other than the photoisomerases is split into two steps: light absorption and G-protein activation. Photoisomerases, on the other hand, are not coupled to G-proteins - they are thought to generate and supply the chromophore that is used by visual opsins.</p> <p><b>Function:</b> This is one of the five types (D1 to D5) of receptors for dopamine. The activity of this receptor is mediated by G proteins which inhibit adenylyl cyclase.</p>

**Subcellular Location:**

Cell membrane.

**DISEASE:**

Defects in DRD2 are associated with dystonia type 11 (DYT11) [MIM:159900]; also known as alcohol-responsive dystonia. DYT11 is a myoclonic dystonia. Dystonia is defined by the presence of sustained involuntary muscle contractions, often leading to abnormal postures. DYT11 is characterized by involuntary lightning jerks and dystonic movements and postures alleviated by alcohol. Inheritance is autosomal dominant. The age of onset, pattern of body involvement, presence of myoclonus and response to alcohol are all variable.

**Similarity:**

Belongs to the G-protein coupled receptor 1 family.

**SWISS:**

P14416

**Gene ID:**

1813

**Database links:**

[Entrez Gene: 1813](#) Human

[Entrez Gene: 13489](#) Mouse

[Entrez Gene: 24318](#) Rat

[Omid: 126450](#) Human

[SwissProt: P14416](#) Human

[SwissProt: P61168](#) Mouse

[SwissProt: P61169](#) Rat

[Unigene: 73893](#) Human

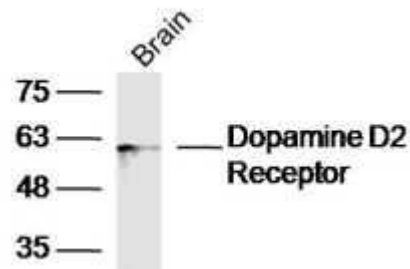
[Unigene: 41970](#) Mouse

[Unigene: 87299](#) Rat

**Important Note:**

This product as supplied is intended for research use only, not for use in human, therapeutic or diagnostic applications.

DAD2主要用于多态性与精神分裂症方面的研究.



Sample:

Brain (Mouse) Lysate at 40 ug

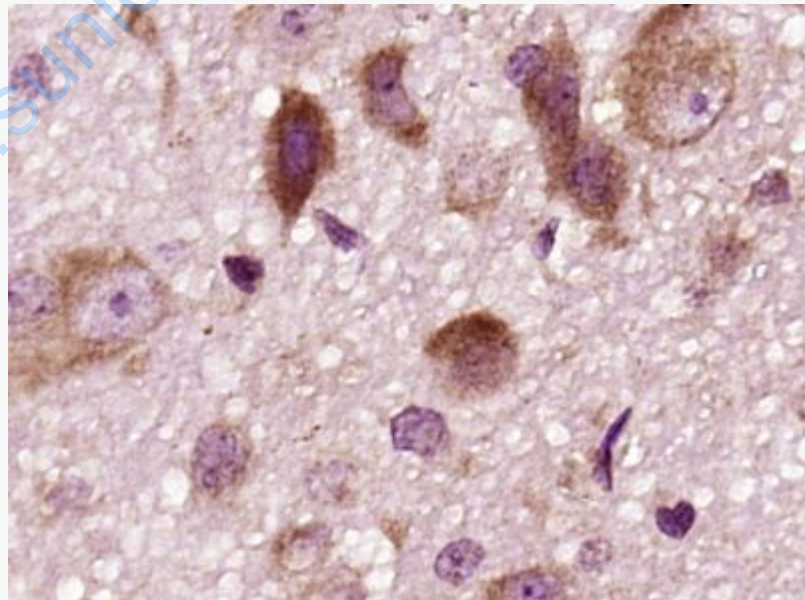
Primary: Anti- Dopamine D2 Receptor (SL1008R) at 1/300 dilution

Secondary: IRDye800CW Goat Anti-Rabbit IgG at 1/20000 dilution

Predicted band size: 60kD

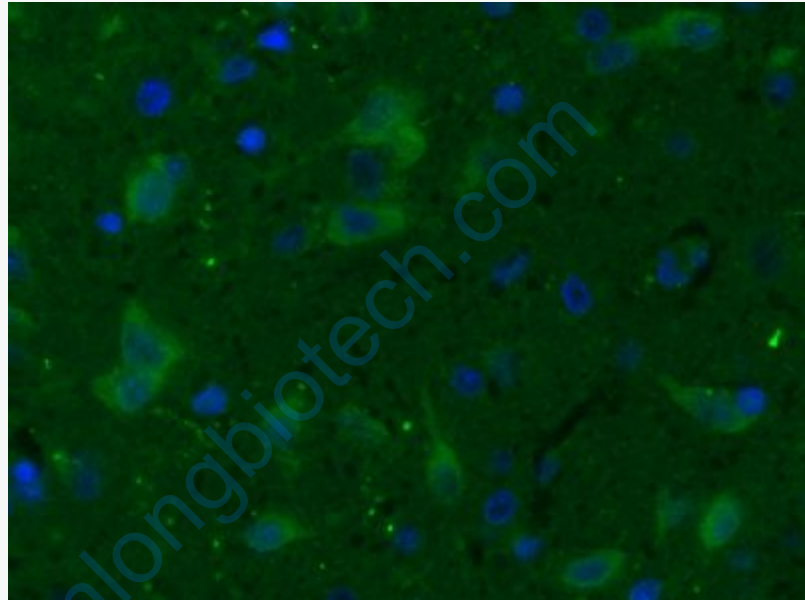
Observed band size: 60kD

Picture:



Paraformaldehyde-fixed, paraffin embedded (Rat brain); Antigen retrieval by boiling in sodium citrate buffer (pH6.0) for 15min; Block endogenous peroxidase by 3%

hydrogen peroxide for 20 minutes; Blocking buffer (normal goat serum) at 37°C for 30min; Antibody incubation with (Dopamine D2 Receptor) Polyclonal Antibody, Unconjugated (SL1008R) at 1:400 overnight at 4°C, followed by operating according to SP Kit(Rabbit) (sp-0023) instructions and DAB staining.



Paraformaldehyde-fixed, paraffin embedded (Rat brain); Antigen retrieval by boiling in sodium citrate buffer (pH6.0) for 15min; Block endogenous peroxidase by 3% hydrogen peroxide for 20 minutes; Blocking buffer (normal goat serum) at 37°C for 30min; Antibody incubation with (Dopamine D2 Receptor) Polyclonal Antibody, Unconjugated (SL1008R) at 1:400 overnight at 4°C, followed by a conjugated Goat Anti-Rabbit IgG antibody (SL1008R) for 90 minutes, and DAPI for nuclei staining.