



## Rabbit Anti-BMP6 antibody

SL10090R

<b>Product Name:</b>	BMP6
<b>Chinese Name:</b>	骨形态发生蛋白6抗体
<b>Alias:</b>	Bone Morphogenic Protein 6; Decapentaplegic vegetal related; DVR6; BMP 6; BMP-6; TGFB related vegetal related growth factor; Transforming growth factor beta; Vegetal related (TGFB related) cytokine; Vg related sequence; VGR1; BMP6_HUMAN.
<b>Organism Species:</b>	Rabbit
<b>Clonality:</b>	Polyclonal
<b>React Species:</b>	Human,Mouse,Rat,Chicken,Dog,Pig,Cow,Horse,Sheep,
<b>Applications:</b>	WB=1:500-2000ELISA=1:500-1000IHC-P=1:400-800IHC-F=1:400-800ICC=1:100-500IF=1:100-500 (Paraffin sections need antigen repair) not yet tested in other applications. optimal dilutions/concentrations should be determined by the end user.
<b>Molecular weight:</b>	16/56kDa
<b>Cellular localization:</b>	Secretory protein
<b>Form:</b>	Lyophilized or Liquid
<b>Concentration:</b>	1mg/ml
<b>immunogen:</b>	KLH conjugated synthetic peptide derived from human BMP6:421-513/513
<b>Lsotype:</b>	IgG
<b>Purification:</b>	affinity purified by Protein A
<b>Storage Buffer:</b>	0.01M TBS(pH7.4) with 1% BSA, 0.03% Proclin300 and 50% Glycerol.
<b>Storage:</b>	Store at -20 °C for one year. Avoid repeated freeze/thaw cycles. The lyophilized antibody is stable at room temperature for at least one month and for greater than a year when kept at -20°C. When reconstituted in sterile pH 7.4 0.01M PBS or diluent of antibody the antibody is stable for at least two weeks at 2-4 °C.
<b>PubMed:</b>	<a href="#">PubMed</a>
<b>Product Detail:</b>	The bone morphogenetic proteins (BMPs) are a family of secreted signaling molecules that can induce ectopic bone growth. Many BMPs are part of the transforming growth factor-beta (TGFB) superfamily. BMPs were originally identified by an ability of demineralized bone extract to induce endochondral osteogenesis in vivo in an extraskeletal site. Based on its expression early in embryogenesis, the BMP encoded by

this gene has a proposed role in early development. In addition, the fact that this BMP is closely related to BMP5 and BMP7 has lead to speculation of possible bone inductive activity. [provided by RefSeq].

**Function:**

Induces cartilage and bone formation.

**Subunit:**

Interacts with SOSTDC1.

**Subcellular Location:**

Secreted.

**Tissue Specificity:**

Expressed in the lung. Low levels seen in the kidney.

**Similarity:**

Belongs to the TGF-beta family.

**SWISS:**

P22004

**Gene ID:**

654

**Database links:**

[Entrez Gene: 654](#)Human

[Entrez Gene: 12161](#)Mouse

[Entrez Gene: 25644](#)Rat

[Omim: 112266](#)Human

[SwissProt: P22004](#)Human

[SwissProt: P20722](#)Mouse

[SwissProt: Q04906](#)Rat

[Unigene: 285671](#)Human

[Unigene: 385759](#)Mouse

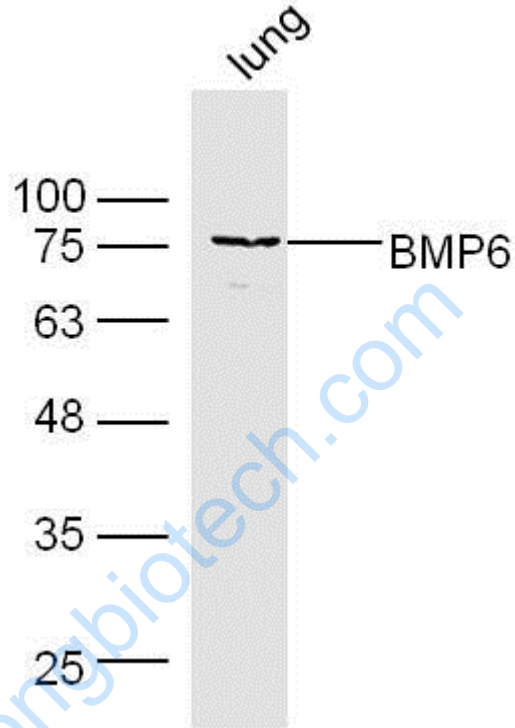
[Unigene: 40476](#)Rat

**Important Note:**

This product as supplied is intended for research use only, not for use in human,

therapeutic or diagnostic applications.

Picture:



Sample:

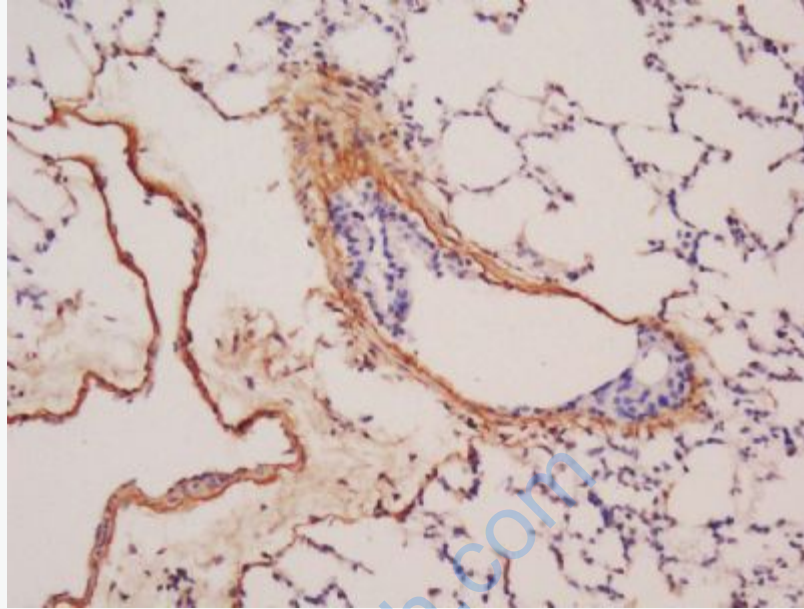
Lung (Mouse) Lysate at 40 ug

Primary: Anti-BMP6 (SL10090R) at 1/300 dilution

Secondary: IRDye800CW Goat Anti-Rabbit IgG at 1/20000 dilution

Predicted band size: 16/56 kD

Observed band size: 76 kD



Tissue/cell: mouse lung tissue; 4% Paraformaldehyde-fixed and paraffin-embedded;  
Antigen retrieval: citrate buffer ( 0.01M, pH 6.0 ), Boiling bathing for 15min; Block  
endogenous peroxidase by 3% Hydrogen peroxide for 30min; Blocking buffer  
(normal goat serum,C-0005) at 37°C for 20 min;  
Incubation: Anti-BMP6 Polyclonal Antibody, Unconjugated(SL10090R) 1:200,  
overnight at 4°C, followed by conjugation to the secondary antibody(SP-0023) and  
DAB(C-0010) staining