



## Rabbit Anti-CYP11A1 antibody

SL10099R

<b>Product Name:</b>	CYP11A1
<b>Chinese Name:</b>	细胞色素P450 11A1抗体
<b>Alias:</b>	Cholesterol 20 22 desmolase; Cholesterol desmolase; Cholesterol monooxygenase (side chain cleaving); Cholesterol side chain cleavage enzyme; Cholesterol side chain cleavage enzyme mitochondrial; Cholesterol side-chain cleavage enzyme; CP11A_HUMAN; CYP11A; CYPXIA1; Cytochrome P450 11A1; Cytochrome P450 11A1 mitochondrial; Cytochrome P450 family 11 subfamily A polypeptide 1; Cytochrome P450 subfamily XIA; Cytochrome P450(scc); Cytochrome P450C11A1; mitochondrial; P450SCC; Steroid 20 22 lyase
<b>Organism Species:</b>	Rabbit
<b>Clonality:</b>	Polyclonal
<b>React Species:</b>	Human,Mouse,Rat,Dog,Pig,Cow,Horse,Rabbit,Sheep,53/57
<b>Applications:</b>	WB=1:500-2000ELISA=1:500-1000IHC-P=1:400-800IHC-F=1:400-800Flow-Cyt=1µg/TestICC=1:100-500IF=1:100-500 (Paraffin sections need antigen repair) not yet tested in other applications. optimal dilutions/concentrations should be determined by the end user.
<b>Molecular weight:</b>	53/57kDa
<b>Cellular localization:</b>	cytoplasmicThe cell membraneMitochondrion
<b>Form:</b>	Lyophilized or Liquid
<b>Concentration:</b>	1mg/ml
<b>immunogen:</b>	KLH conjugated synthetic peptide derived from human CYP11A1/P450SCC:41-140/521
<b>Lsotype:</b>	IgG
<b>Purification:</b>	affinity purified by Protein A
<b>Storage Buffer:</b>	0.01M TBS(pH7.4) with 1% BSA, 0.03% Proclin300 and 50% Glycerol.
<b>Storage:</b>	Store at -20 °C for one year. Avoid repeated freeze/thaw cycles. The lyophilized antibody is stable at room temperature for at least one month and for greater than a year when kept at -20°C. When reconstituted in sterile pH 7.4 0.01M PBS or diluent of antibody the antibody is stable for at least two weeks at 2-4 °C.

**PubMed:**[PubMed](#)

This gene encodes a member of the cytochrome P450 superfamily of enzymes. The cytochrome P450 proteins are monooxygenases which catalyze many reactions involved in drug metabolism and synthesis of cholesterol, steroids and other lipids. This protein localizes to the mitochondrial inner membrane and catalyzes the conversion of cholesterol to pregnenolone, the first and rate-limiting step in the synthesis of the steroid hormones. Two transcript variants encoding different isoforms have been found for this gene. The cellular location of the smaller isoform is unclear since it lacks the mitochondrial-targeting transit peptide. [provided by RefSeq, Jul 2008]

**Function:**

Catalyzes the side-chain cleavage reaction of cholesterol to pregnenolone.

**Subcellular Location:**

Mitochondrion membrane.

**DISEASE:**

Defects in CYP11A1 are the cause of adrenal insufficiency congenital with 46,XY sex reversal (AICSR) [MIM:613743]. A rare disorder that can present as acute adrenal insufficiency in infancy or childhood. ACTH and plasma renin activity are elevated and adrenal steroids are inappropriately low or absent; the 46,XY patients have female external genitalia, sometimes with clitoromegaly. The phenotypic spectrum ranges from prematurity, complete underandrogenization, and severe early-onset adrenal failure to term birth with clitoromegaly and later-onset adrenal failure. Patients with congenital adrenal insufficiency do not manifest the massive adrenal enlargement typical of congenital lipoid adrenal hyperplasia.

**Similarity:**

Belongs to the cytochrome P450 family.

**SWISS:**

P05108

**Gene ID:**

1583

**Database links:**

[Entrez Gene: 1583](#) Human

[Entrez Gene: 13070](#) Mouse

[Entrez Gene: 29680](#) Rat

[Omim: 118485](#) Human

**Product Detail:**

[SwissProt: Q2XV99](#) Cynomolgus Monkey

[SwissProt: P05108](#) Human

[SwissProt: Q9QZ82](#) Mouse

[SwissProt: P14137](#) Rat

[Unigene: 303980](#) Human

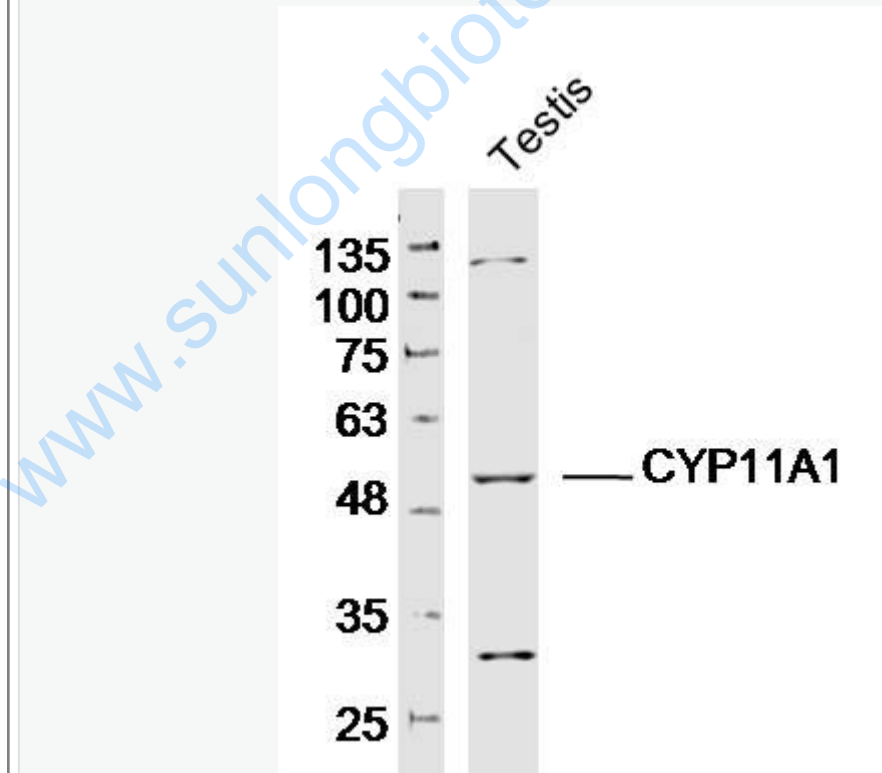
[Unigene: 302865](#) Mouse

[Unigene: 1401](#) Rat

**Important Note:**

This product as supplied is intended for research use only, not for use in human, therapeutic or diagnostic applications.

Picture:



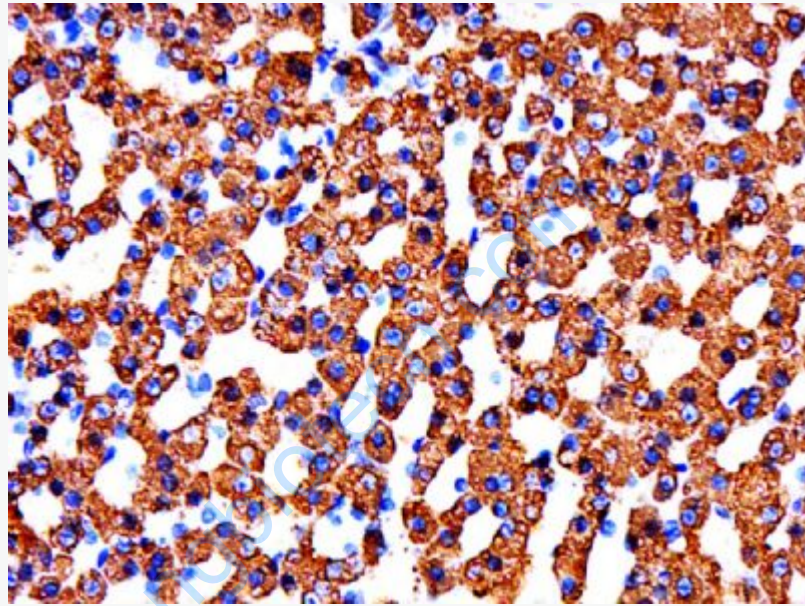
Sample: Testis(Mouse)Lysate at 40 ug

Primary: Anti-CYP11A1(SL10099R)at 1/300 dilution

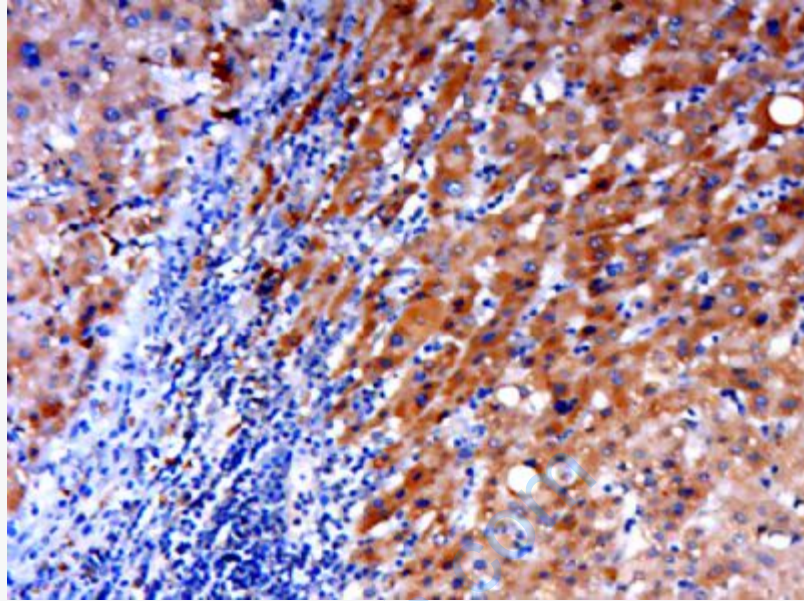
Secondary: IRDye800CW Goat Anti-Rabbit IgG at 1/20000 dilution

Predicted band size: 53/57 kD

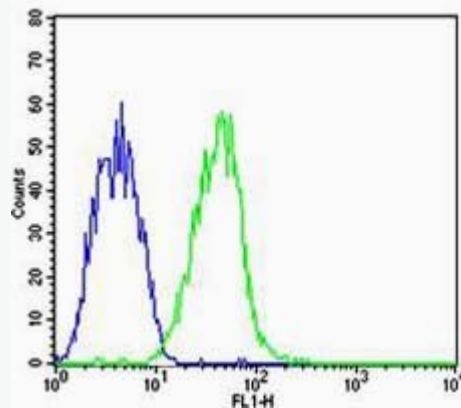
Observed band size: 53/57 kD



Paraformaldehyde-fixed, paraffin embedded (mouse adrenal gland); Antigen retrieval by boiling in sodium citrate buffer (pH6.0) for 15min; Block endogenous peroxidase by 3% hydrogen peroxide for 20 minutes; Blocking buffer (normal goat serum) at 37°C for 30min; Antibody incubation with (Cytochrome P450 family 11 subfamily A polypeptide 1) Polyclonal Antibody, Unconjugated (SL10099R) at 1:500 overnight at 4°C, followed by a conjugated secondary (sp-0023) for 20 minutes and DAB staining.



Paraformaldehyde-fixed, paraffin embedded (human liver carcinoma); Antigen retrieval by boiling in sodium citrate buffer (pH6.0) for 15min; Block endogenous peroxidase by 3% hydrogen peroxide for 20 minutes; Blocking buffer (normal goat serum) at 37°C for 30min; Antibody incubation with (Cytochrome P450 family 11 subfamily A polypeptide 1) Polyclonal Antibody, Unconjugated (SL10099R) at 1:500 overnight at 4°C, followed by a conjugated secondary (sp-0023) for 20 minutes and DAB staining.



Cell: HepG2.

Concentration: 1:100

Host/Isotype: Rabbit/IgG

Flow cytometric analysis of Rabbit IgG isotype control (Cat#: bs-10099R) on HepG2 (green) compared with control in the absence of primary antibody (blue) followed by Alexa Fluor 488-conjugated goat anti-rabbit IgG(H+L) secondary antibody .

[www.sunlongbiotech.com](http://www.sunlongbiotech.com)