



## Rabbit Anti-CXCR1 antibody

SL1009R

<b>Product Name:</b>	CXCR1
<b>Chinese Name:</b>	细胞表面Chemokine受体1抗体
<b>Alias:</b>	C C; C C CKR 1; CCCR1; CD 181; CD128; CD181; CDw128a; Chemokine (C X C motif) receptor 1; Chemokine (C X C) receptor 1; Chemokine receptor 1; CKR 1; CMKAR1; CXCR 1; High affinity interleukin 8 receptor A; IL 8 receptor type 1; IL 8R A; IL-8RA; IL8 receptor; IL8 receptor type 1; IL8R1; IL8RA; IL8RBA; Interleukin 8 receptor alpha; Interleukin 8 receptor type 1. Interleukin 8 receptor type A; CXCR1 HUMAN; C-C; CD181; CKR-1; IL8R1; CDw128a; C-C-CKR-1.
<b>文献引用</b> <b>PubMed</b> :	<p><b>Specific References(3)</b>SL1009R has been referenced in 3 publications.</p> <p><b>[IF=2.24]</b>Tang, Cui, et al. "High expression of GPER1, EGFR and CXCR1 is associated with lymph node metastasis in papillary thyroid carcinoma." International Journal of Clinical and Experimental Pathology 7.6 (2014): 3213-3223.<b>IHC-P;Human.</b> <a href="#">PubMed:25031721</a></p> <p><b>[IF=2.57]</b>Schneberger, D., et al. "CXCR1/CXCR2 antagonist CXCL8 (3-74) K11R/G31P blocks lung inflammation in swine barn dust-instilled mice." Pulmonary Pharmacology &amp; Therapeutics (2015).<b>IHC-P;Mouse.</b> <a href="#">PubMed:25681618</a></p> <p><b>[IF=1.89]</b>Zhao, Le, et al. "Role of GPER1, EGFR and CXCR1 in differentiating between malignant follicular thyroid carcinoma and benign follicular thyroid adenoma."International Journal of Clinical and Experimental Pathology 8.9 (2015): 11236-11247.<b>IHC-P;Human.</b> <a href="#">PubMed:26617848</a></p>
<b>Organism Species:</b>	Rabbit
<b>Clonality:</b>	Polyclonal

<b>React Species:</b>	Human, Mouse, Rat, Dog, Cow, Rabbit,
<b>Applications:</b>	WB=1:500-2000 ELISA=1:500-1000 IHC-P=1:400-800 IHC-F=1:400-800 IF=1:100-500 (Paraffin sections need antigen repair) not yet tested in other applications. optimal dilutions/concentrations should be determined by the end user.
<b>Molecular weight:</b>	40kDa
<b>Cellular localization:</b>	The cell membrane
<b>Form:</b>	Lyophilized or Liquid
<b>Concentration:</b>	1mg/ml
<b>immunogen:</b>	KLH conjugated synthetic peptide derived from human CXCR1:186-280/350 <Cytoplasmic>
<b>Lsotype:</b>	IgG
<b>Purification:</b>	affinity purified by Protein A
<b>Storage Buffer:</b>	0.01M TBS(pH7.4) with 1% BSA, 0.03% Proclin300 and 50% Glycerol.
<b>Storage:</b>	Store at -20 °C for one year. Avoid repeated freeze/thaw cycles. The lyophilized antibody is stable at room temperature for at least one month and for greater than a year when kept at -20°C. When reconstituted in sterile pH 7.4 0.01M PBS or diluent of antibody the antibody is stable for at least two weeks at 2-4 °C.
<b>PubMed:</b>	<a href="#">PubMed</a>
<b>Product Detail:</b>	<p>The protein encoded by this gene is a member of the G-protein-coupled receptor family. This protein is a receptor for interleukin 8 (IL8). It binds to IL8 with high affinity, and transduces the signal through a G-protein activated second messenger system. Knockout studies in mice suggested that this protein inhibits embryonic oligodendrocyte precursor migration in developing spinal cord. This gene, IL8RB, a gene encoding another high affinity IL8 receptor, as well as IL8RBP, a pseudogene of IL8RB, form a gene cluster in a region mapped to chromosome 2q33-q36. [provided by RefSeq, Jul 2008]</p> <p><b>Function:</b> Receptor to interleukin-8, which is a powerful neutrophils chemotactic factor. Binding of IL-8 to the receptor causes activation of neutrophils. This response is mediated via a G-protein that activate a phosphatidylinositol-calcium second messenger system. This receptor binds to IL-8 with a high affinity and to MGSA (GRO) with a low affinity.</p> <p><b>Subcellular Location:</b> Cell membrane.</p> <p><b>Similarity:</b> Belongs to the G-protein coupled receptor 1 family.</p> <p><b>SWISS:</b> P25024</p> <p><b>Gene ID:</b> 3577</p> <p><b>Database links:</b></p>

[Entrez Gene: 3577](#) Human

[Entrez Gene: 227288](#) Mouse

[Entrez Gene: 54258](#) Rat

[Omim: 146929](#) Human

[SwissProt: P25024](#) Human

[SwissProt: Q810W6](#) Mouse

[SwissProt: P70612](#) Rat

[Unigene: 194778](#) Human

[Unigene: 337035](#) Mouse

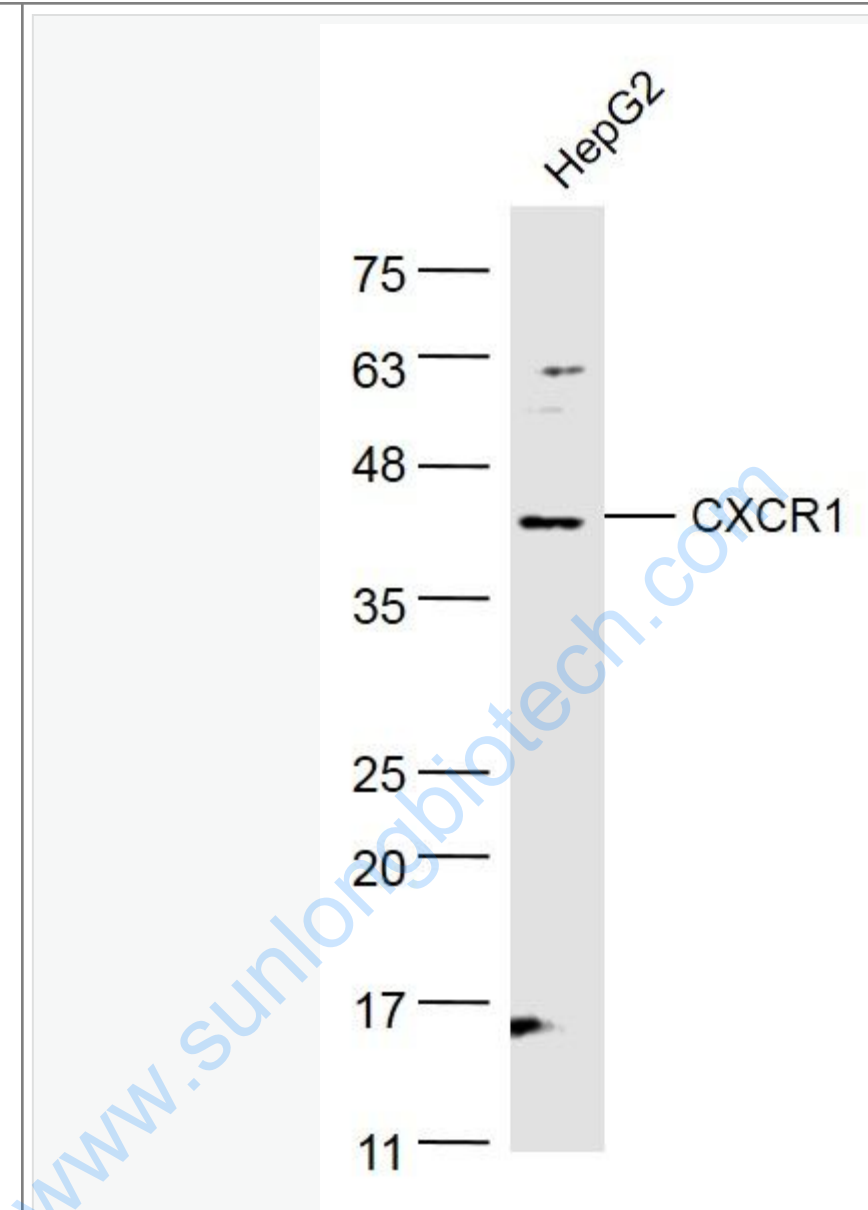
[Unigene: 138115](#) Rat

**Important Note:**

This product as supplied is intended for research use only, not for use in human, therapeutic or diagnostic applications.

CXCR1主要表达于浸润的炎性细胞和肠epithelial cells表面.

Picture:



Sample:

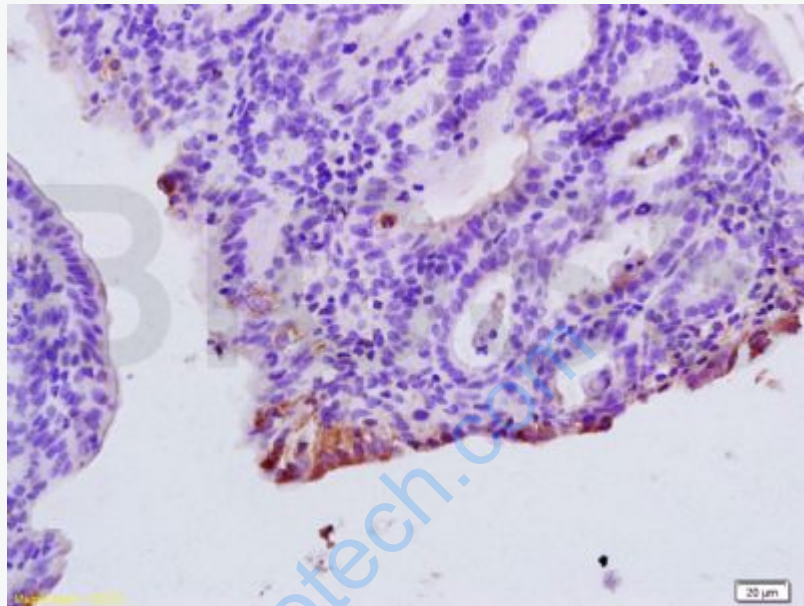
HepG2(Human) Cell Lysate at 40 ug

Primary: Anti- CXCR1 (SL1009R) at 1/300 dilution

Secondary: IRDye800CW Goat Anti-Rabbit IgG at 1/20000 dilution

Predicted band size: 40 kD

Observed band size: 40 kD



Tissue/cell: rat colitis tissue; 4% Paraformaldehyde-fixed and paraffin-embedded;  
Antigen retrieval: citrate buffer ( 0.01M, pH 6.0 ), Boiling bathing for 15min; Block endogenous peroxidase by 3% Hydrogen peroxide for 30min; Blocking buffer (normal goat serum,C-0005) at 37°C for 20 min;  
Incubation: Anti-CXCR1/IL-8RA Polyclonal Antibody, Unconjugated(SL1009R) 1:200, overnight at 4°C, followed by conjugation to the secondary antibody(SP-0023) and DAB(C-0010) staining