



## Rabbit Anti-Cytokeratin 6 antibody

SL10105R

<b>Product Name:</b>	Cytokeratin 6
<b>Chinese Name:</b>	细胞角蛋白6抗体
<b>Alias:</b>	KRT6A; CK6A; CK6B; CK6C; CK6D; CK 6E; K6A; CK6; K6C; K6D; KRT6C; Cytokeratin 6a; Cytokeratin 6B; Cytokeratin 6C; Cytokeratin 6D; Cytokeratin 6E; Cytokeratin6; Cytokeratin 6; k6a keratin; K6B; K6b keratin; K6c keratin; K6d keratin; K6e keratin; k6hf; Keratin 6 isoform K6e; Keratin 6C; Keratin 6E; Keratin K6h; Keratin type II cytoskeletal 6A; Keratin type II cytoskeletal 6B; Keratin type II cytoskeletal 6C; Keratin type II cytoskeletal 6D; Keratin type II cytoskeletal 6E; KRT6; KRT6A; KRT6B; KRT6C; KRT6D; KRT6E; MGC102925; K2C6A_HUMAN.
<b>Organism Species:</b>	Rabbit
<b>Clonality:</b>	Polyclonal
<b>React Species:</b>	Human,Mouse,Rat,Dog,Pig,Cow,Horse,Rabbit,Sheep,
<b>Applications:</b>	WB=1:500-2000ELISA=1:500-1000IHC-P=1:400-800IHC-F=1:400-800ICC=1:100-500IF=1:100-500 (Paraffin sections need antigen repair) not yet tested in other applications. optimal dilutions/concentrations should be determined by the end user.
<b>Molecular weight:</b>	60kDa
<b>Cellular localization:</b>	The nucleuscytoplasmicSecretory protein
<b>Form:</b>	Lyophilized or Liquid
<b>Concentration:</b>	1mg/ml
<b>immunogen:</b>	KLH conjugated synthetic peptide derived from human Cytokeratin 6:351-450/564
<b>Lsotype:</b>	IgG
<b>Purification:</b>	affinity purified by Protein A
<b>Storage Buffer:</b>	0.01M TBS(pH7.4) with 1% BSA, 0.03% Proclin300 and 50% Glycerol.
<b>Storage:</b>	Store at -20 °C for one year. Avoid repeated freeze/thaw cycles. The lyophilized antibody is stable at room temperature for at least one month and for greater than a year when kept at -20°C. When reconstituted in sterile pH 7.4 0.01M PBS or diluent of antibody the antibody is stable for at least two weeks at 2-4 °C.
<b>PubMed:</b>	<a href="#">PubMed</a>
<b>Product Detail:</b>	The protein encoded by this gene is a member of the keratin gene family. The type II

cytokeratins consist of basic or neutral proteins which are arranged in pairs of heterotypic keratin chains coexpressed during differentiation of simple and stratified epithelial tissues. As many as six of this type II cytokeratin(KRT6) have been identified; the multiplicity of the genes is attributed to successive gene duplication events. The genes are expressed with family members KRT16 and/or KRT17 in the filiform papillae of the tongue, the stratified epithelial lining of oral mucosa and esophagus, the outer root sheath of hair follicles, and the glandular epithelia. This KRT6 gene in particular encodes the most abundant isoform. Mutations in these genes have been associated with pachyonychia congenita. The type II cytokeratins are clustered in a region of chromosome 12q12-q13. [provided by RefSeq].

**Subunit:**

Heterodimer of a type I and a type II keratin. KRT6 isomers associate with KRT16 and/or KRT17. Interacts with TCHP.

**Tissue Specificity:**

Constitutively expressed in distinct types of epithelia such as those in oral mucosa, esophagus, papillae of tongue and hair follicle outer root sheath.

**Similarity:**

Belongs to the intermediate filament family.

**SWISS:**

P48668

**Gene ID:**

286887

**Database links:**

[Entrez Gene: 286887](#)Human

[Entrez Gene: 3853](#)Human

[Entrez Gene: 3854](#)Human

[Entrez Gene: 16687](#)Mouse

[Entrez Gene: 16688](#)Mouse

[Omim: 148041](#)Human

[Omim: 148042](#)Human

[Omim: 612315](#)Human

[SwissProt: P02538](#)Human

[SwissProt: P04259](#)Human

[SwissProt: P48668](#)Human

[SwissProt: P50446](#)Mouse

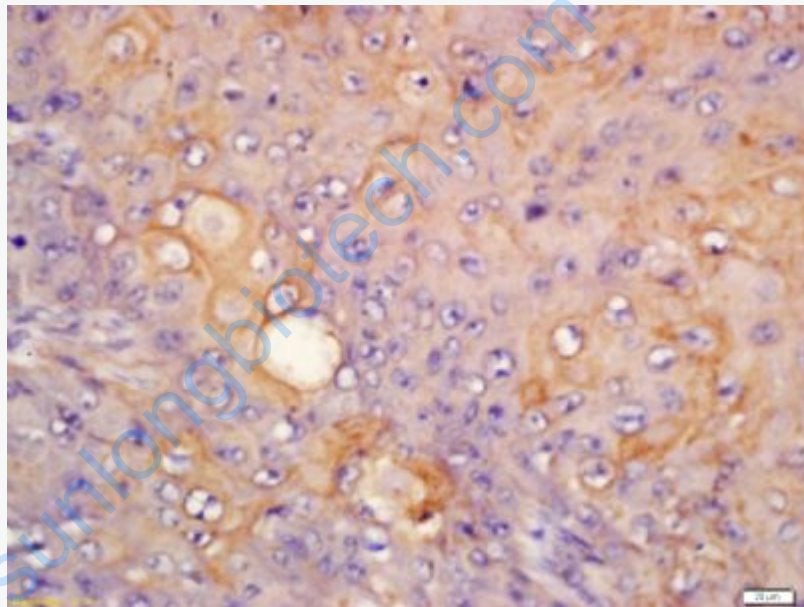
[SwissProt: Q9Z331](#)Mouse

[Unigene: 700779](#)Human

[Unigene: 709234](#)Human

**Important Note:**

This product as supplied is intended for research use only, not for use in human, therapeutic or diagnostic applications.



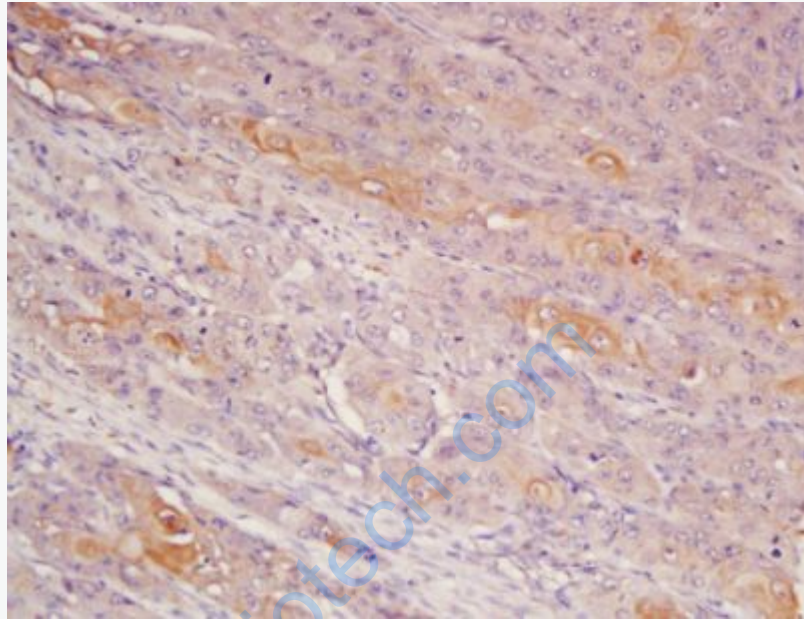
**Picture:**

Tissue/cell: Human laryngeal tissue; 4% Paraformaldehyde-fixed and paraffin-embedded;

Antigen retrieval: citrate buffer ( 0.01M, pH 6.0 ), Boiling bathing for 15min; Block endogenous peroxidase by 3% Hydrogen peroxide for 30min; Blocking buffer (normal goat serum,C-0005) at 37°C for 20 min;

Incubation: Anti-Cytokeratin 6 Polyclonal Antibody, Unconjugated(SL10105R) 1:200, overnight at 4°C, followed by conjugation to the secondary antibody(SP-

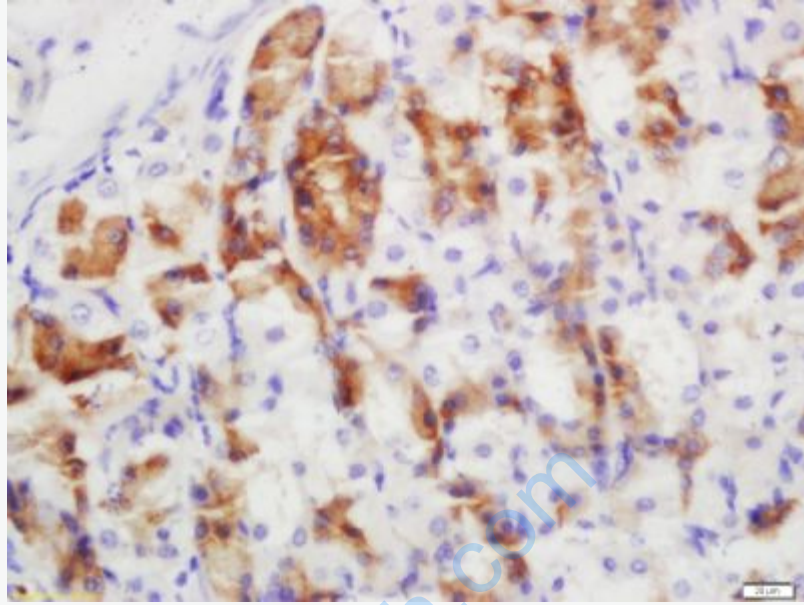
0023) and DAB(C-0010) staining



Tissue/cell: human laryngocarcinoma; 4% Paraformaldehyde-fixed and paraffin-embedded;

Antigen retrieval: citrate buffer ( 0.01M, pH 6.0 ), Boiling bathing for 15min; Block endogenous peroxidase by 3% Hydrogen peroxide for 30min; Blocking buffer (normal goat serum,C-0005) at 37°C for 20 min;

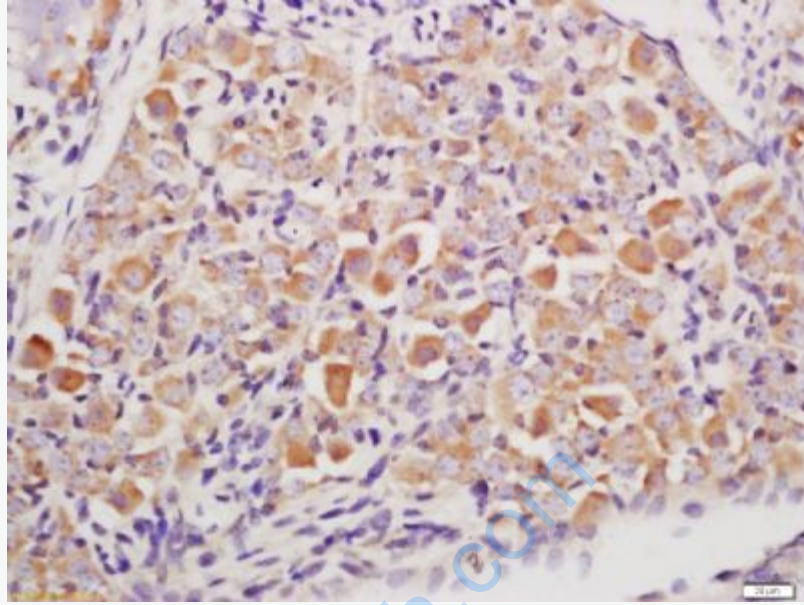
Incubation: Anti-CK6B Polyclonal Antibody, Unconjugated(SL10105R) 1:200, overnight at 4°C, followed by conjugation to the secondary antibody(SP-0023) and DAB(C-0010) staining



Tissue/cell: mouse stomach tissue; 4% Paraformaldehyde-fixed and paraffin-embedded;

Antigen retrieval: citrate buffer ( 0.01M, pH 6.0 ), Boiling bathing for 15min; Block endogenous peroxidase by 3% Hydrogen peroxide for 30min; Blocking buffer (normal goat serum,C-0005) at 37°C for 20 min;

Incubation: Anti-Cytokeratin 6 Polyclonal Antibody, Unconjugated(SL10105R) 1:200, overnight at 4°C, followed by conjugation to the secondary antibody(SP-0023) and DAB(C-0010) staining



Tissue/cell: mouse embryo tissue; 4% Paraformaldehyde-fixed and paraffin-embedded;

Antigen retrieval: citrate buffer ( 0.01M, pH 6.0 ), Boiling bathing for 15min; Block endogenous peroxidase by 3% Hydrogen peroxide for 30min; Blocking buffer (normal goat serum,C-0005) at 37°C for 20 min;

Incubation: Anti-Cytokeratin 6 Polyclonal Antibody, Unconjugated(SL10105R) 1:200, overnight at 4°C, followed by conjugation to the secondary antibody(SP-0023) and DAB(C-0010) staining