



## Rabbit Anti-Integrin alpha 2/CD49b antibody

SL10132R

<b>Product Name:</b>	Integrin alpha 2/CD49b
<b>Chinese Name:</b>	整合素 $\alpha$ 2抗体
<b>Alias:</b>	Integrin alpha 2; CD49b antigen; BR; CD 49b; CD49 antigen like family member B; CD49b; CD49b; Collagen receptor; DX5 ; Glycoprotein Ia deficiency included; GP Ia; GP Ia deficiency, included; GPIa; HPA 5 included; HPA5 included; Itga2; Platelet alloantigen Br(a), included; Platelet antigen Br; Platelet glycoprotein GPIa; Platelet glycoprotein Ia; Platelet glycoprotein Ia/Iia; Platelet membrane glycoprotein Ia; Platelet receptor for collagen, deficiency of, included; Very late activation protein 2 receptor alpha 2 subunit; VLA 2 alpha chain; VLA 2; VLA 2 subunit alpha; VLA2 alpha chain; ITA2 HUMAN.
<b>Organism Species:</b>	Rabbit
<b>Clonality:</b>	Polyclonal
<b>React Species:</b>	Human,Mouse,Rat,Pig,Horse,Rabbit,
<b>Applications:</b>	WB=1:500-2000ELISA=1:500-1000ICC=1:100-500 not yet tested in other applications. optimal dilutions/concentrations should be determined by the end user.
<b>Molecular weight:</b>	127kDa
<b>Cellular localization:</b>	The cell membrane
<b>Form:</b>	Lyophilized or Liquid
<b>Concentration:</b>	1mg/ml
<b>immunogen:</b>	KLH conjugated synthetic peptide derived from human Integrin alpha 2/CD49b:801-900/1181<Extracellular>
<b>Lsotype:</b>	IgG
<b>Purification:</b>	affinity purified by Protein A
<b>Storage Buffer:</b>	0.01M TBS(pH7.4) with 1% BSA, 0.03% Proclin300 and 50% Glycerol.
<b>Storage:</b>	Store at -20 °C for one year. Avoid repeated freeze/thaw cycles. The lyophilized antibody is stable at room temperature for at least one month and for greater than a year when kept at -20°C. When reconstituted in sterile pH 7.4 0.01M PBS or diluent of antibody the antibody is stable for at least two weeks at 2-4 °C.
<b>PubMed:</b>	<a href="#">PubMed</a>

Integrins are heterodimeric cell surface receptors composed of alpha and beta subunits, which mediate cell-cell and cell-extracellular matrix attachments. They are responsible for adhesion of platelets and other cells to collagens, modulation of collagen and collagenase gene expression, force generation and organization of newly synthesized extracellular matrix. Aberrant integrin expression has been found in many epithelial tumours. Changes in integrin expression have been shown to be important for the growth and early metastatic capacity of melanoma cells.

**Function:**

Integrin alpha-2/beta-1 is a receptor for laminin, collagen, collagen C-propeptides, fibronectin and E-cadherin. It recognizes the proline-hydroxylated sequence G-F-P-G-E-R in collagen. It is responsible for adhesion of platelets and other cells to collagens, modulation of collagen and collagenase gene expression, force generation and organization of newly synthesized extracellular matrix.

**Subunit:**

Heterodimer of an alpha and a beta subunit. Alpha-2 associates with beta-1. Interacts with HPS5 and RAB21. Binds to human echoviruses 1 and 8 capsid proteins and acts as a receptor for these viruses. Interacts (via ITAG2 I-domain) with rotavirus A VP4; this interaction only occurs in rotavirus integrin-dependent strains, for which ITGA2 acts as a receptor.

**Subcellular Location:**

Membrane; Single-pass type I membrane protein.

**Similarity:**

Belongs to the integrin alpha chain family.

Contains 7 FG-GAP repeats.

Contains 1 VWFA domain.

**SWISS:**

P17301

**Gene ID:**

3673

**Database links:**

[Entrez Gene: 3673](#)Human

[Entrez Gene: 16398](#)Mouse

[Omim: 192974](#)Human

[SwissProt: P17301](#)Human

[SwissProt: Q62469](#)Mouse

**Product Detail:**

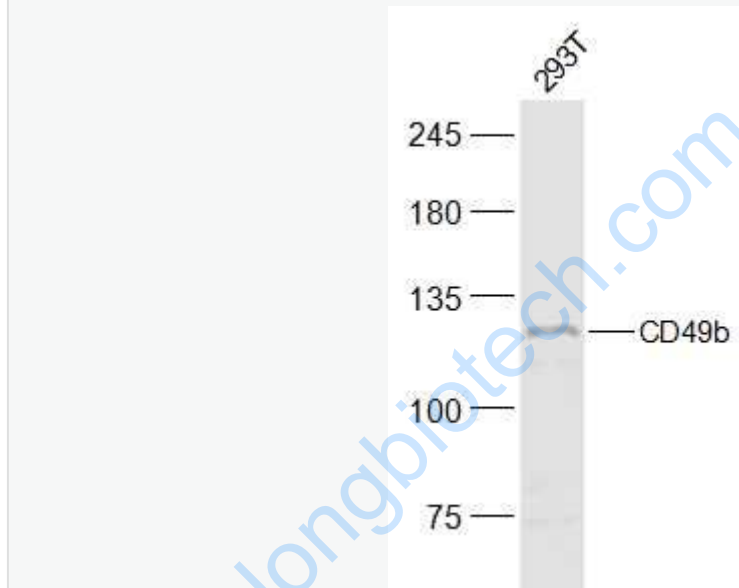
[Unigene: 482077](#)Human

[Unigene: 5007](#)Mouse

**Important Note:**

This product as supplied is intended for research use only, not for use in human, therapeutic or diagnostic applications.

**Picture:**



Sample:

293T(Human) Cell Lysate at 30 ug

Primary: Anti-CD49b (SL10132R) at 1/300 dilution

Secondary: IRDye800CW Goat Anti-Rabbit IgG at 1/20000 dilution

Predicted band size: 127 kD

Observed band size: 127 kD