



## Rabbit Anti-Exportin 1 antibody

SL10151R

<b>Product Name:</b>	Exportin 1
<b>Chinese Name:</b>	染色体区域稳定蛋白/核输出蛋白1抗体
<b>Alias:</b>	Chromosome region maintenance 1 protein homolog; CRM 1; CRM1; CRM1 homolog; DKFZp686B1823; Exp 1; Exp-1;Exp1; Exportin 1; Exportin1; Exportin-1; XPO 1; XPO1; XPO1_HUMAN.
<b>Organism Species:</b>	Rabbit
<b>Clonality:</b>	Polyclonal
<b>React Species:</b>	Human,Mouse,Rat,Chicken,Dog,Pig,Cow,Horse,Rabbit,Sheep,
<b>Applications:</b>	WB=1:500-2000ELISA=1:500-1000IHC-P=1:400-800IHC-F=1:400-800ICC=1:100-500IF=1:100-500 (Paraffin sections need antigen repair) not yet tested in other applications. optimal dilutions/concentrations should be determined by the end user.
<b>Molecular weight:</b>	118kDa
<b>Cellular localization:</b>	The nucleuscytoplasmic
<b>Form:</b>	Lyophilized or Liquid
<b>Concentration:</b>	1mg/ml
<b>immunogen:</b>	KLH conjugated synthetic peptide derived from human Exportin 1/CRM1:701-800/1071
<b>Lsotype:</b>	IgG
<b>Purification:</b>	affinity purified by Protein A
<b>Storage Buffer:</b>	0.01M TBS(pH7.4) with 1% BSA, 0.03% Proclin300 and 50% Glycerol.
<b>Storage:</b>	Store at -20 °C for one year. Avoid repeated freeze/thaw cycles. The lyophilized antibody is stable at room temperature for at least one month and for greater than a year when kept at -20°C. When reconstituted in sterile pH 7.4 0.01M PBS or diluent of antibody the antibody is stable for at least two weeks at 2-4 °C.
<b>PubMed:</b>	<a href="#">PubMed</a>
<b>Product Detail:</b>	The protein encoded by this gene mediates leucine-rich nuclear export signal (NES)-dependent protein transport. Exportin 1 specifically inhibits the nuclear export of Rev and U snRNAs. It is involved in the control of several cellular processes by controlling the localization of cyclin B, MPAK, and MAPKAP kinase 2. This protein also regulates NFAT and AP-1. [provided by RefSeq, Jul 2008]

**Function:**

Mediates the nuclear export of cellular proteins (cargos) bearing a leucine-rich nuclear export signal (NES) and of RNAs. In the nucleus, in association with RANBP3, binds cooperatively to the NES on its target protein and to the GTPase RAN in its active GTP-bound form (Ran-GTP). Docking of this complex to the nuclear pore complex (NPC) is mediated through binding to nucleoporins. Upon transit of an nuclear export complex into the cytoplasm, disassembling of the complex and hydrolysis of Ran-GTP to Ran-GDP (induced by RANBP1 and RANGAP1, respectively) cause release of the cargo from the export receptor. The directionality of nuclear export is thought to be conferred by an asymmetric distribution of the GTP- and GDP-bound forms of Ran between the cytoplasm and nucleus. Involved in U3 snoRNA transport from Cajal bodies to nucleoli. Binds to late precursor U3 snoRNA bearing a TMG cap. Several viruses, among them HIV-1, HTLV-1 and influenza A use it to export their unspliced or incompletely spliced RNAs out of the nucleus. Interacts with, and mediates the nuclear export of HIV-1 Rev and HTLV-1 Rex proteins. Involved in HTLV-1 Rex multimerization.

**Subunit:**

Found in a U snRNA export complex with RNUXA/PHAX, NCBP1, NCBP2, RAN, XPO1 and m7G-capped RNA (By similarity). Component of a nuclear export receptor complex composed of KPNB1, RAN, SNUPN and XPO1. Found in a trimeric export complex with SNUPN, RAN and XPO1. Found in a nuclear export complex with RANBP3 and RAN. Found in a 60S ribosomal subunit export complex with NMD3, RAN, XPO1. Interacts with DDX3X, NMD3, NUPL2, NUP88, NUP214, RANBP3 and TERT. Also found in complex with several viral proteins involved in RNAs' nuclear export like HIV-1 Rev and HTLV-1 Rex. Interacts presumably with influenza A nucleoprotein. Interacts with Epstein-Barr virus BMLF1. Interacts with NEMF (via its N-terminus). Interacts with the monomeric form of BIRC5/survivin deacetylated at 'Lys-129'.

**Subcellular Location:**

Cytoplasm. Nucleus, nucleoplasm. Nucleus, Cajal body. Nucleus, nucleolus.

Note=Located in the nucleoplasm, Cajal bodies and nucleoli. Shuttles between the nucleus/nucleolus and the cytoplasm.

**Tissue Specificity:**

Expressed in heart, brain, placenta, lung, liver, skeletal muscle, pancreas, spleen, thymus, prostate, testis, ovary, small intestine, colon and peripheral blood leukocytes. Not expressed in the kidney.

**Similarity:**

Belongs to the exportin family.

Contains 10 HEAT repeats.

Contains 1 importin N-terminal domain.

**SWISS:**

O14980

**Gene ID:**  
7514

**Database links:**

[Entrez Gene: 7514](#)Human

[Entrez Gene: 103573](#)Mouse

[Entrez Gene: 85252](#)Rat

[Oimim: 602559](#)Human

[SwissProt: O14980](#)Human

[SwissProt: Q6P5F9](#)Mouse

[SwissProt: Q80U96](#)Rat

[Unigene: 370770](#)Human

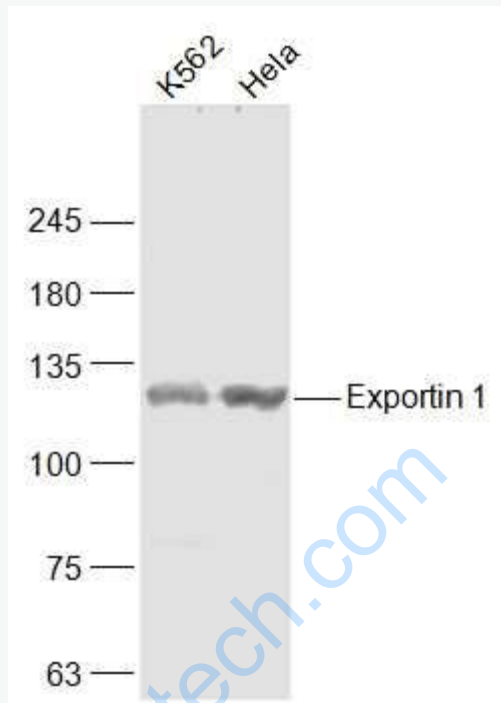
[Unigene: 217547](#)Mouse

[Unigene: 34087](#)Rat

**Important Note:**

This product as supplied is intended for research use only, not for use in human, therapeutic or diagnostic applications.

Picture:



Sample:

K562(Human) Cell Lysate at 30 ug

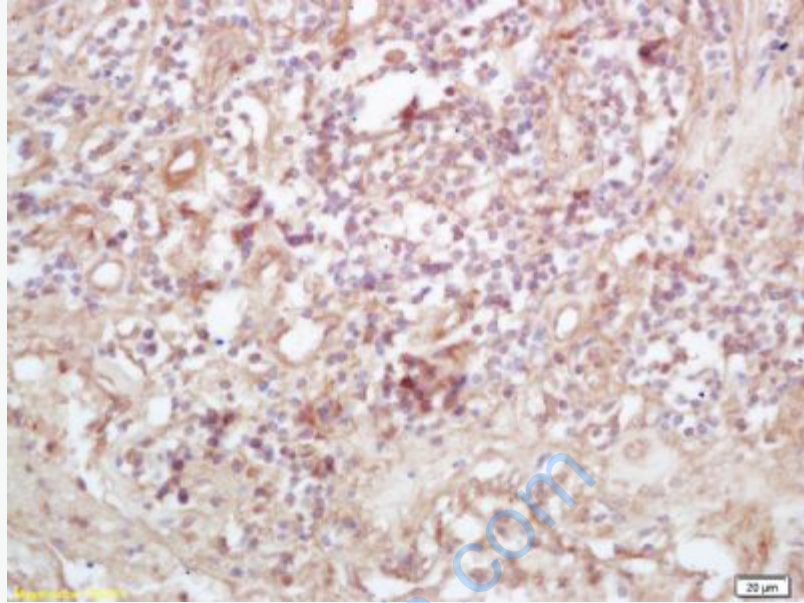
HeLa(Human) Cell Lysate at 30 ug

Primary: Anti-Exportin 1 (SL10151R) at 1/1000 dilution

Secondary: IRDye800CW Goat Anti-Rabbit IgG at 1/20000 dilution

Predicted band size: 118 kD

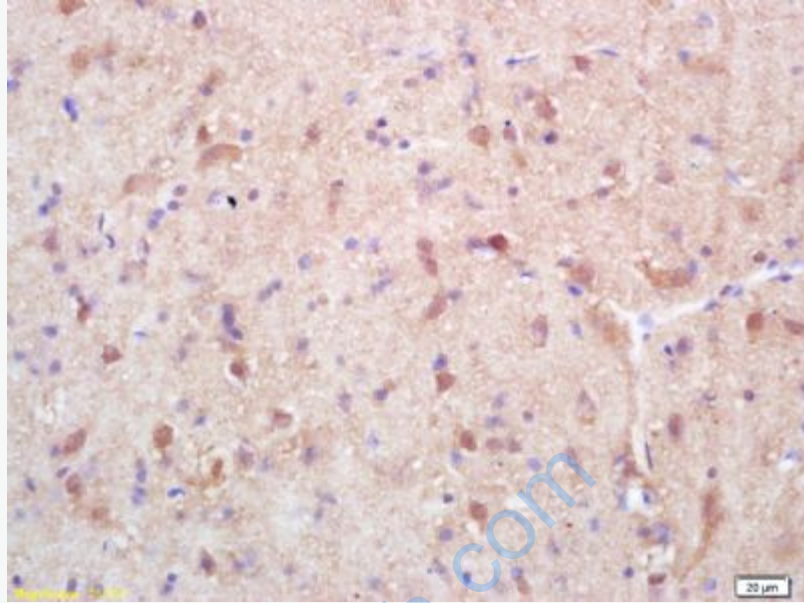
Observed band size: 123 kD



Tissue/cell: human lung carcinoma; 4% Paraformaldehyde-fixed and paraffin-embedded;

Antigen retrieval: citrate buffer ( 0.01M, pH 6.0 ), Boiling bathing for 15min; Block endogenous peroxidase by 3% Hydrogen peroxide for 30min; Blocking buffer (normal goat serum,C-0005) at 37°C for 20 min;

Incubation: Anti-Exportin 1/CRM1 Polyclonal Antibody, Unconjugated(SL10151R) 1:200, overnight at 4°C, followed by conjugation to the secondary antibody(SP-0023) and DAB(C-0010) staining



Tissue/cell: rat brain tissue; 4% Paraformaldehyde-fixed and paraffin-embedded;  
Antigen retrieval: citrate buffer ( 0.01M, pH 6.0 ), Boiling bathing for 15min; Block endogenous peroxidase by 3% Hydrogen peroxide for 30min; Blocking buffer (normal goat serum,C-0005) at 37°C for 20 min;  
Incubation: Anti-Exportin 1/CRM1 Polyclonal Antibody, Unconjugated(SL10151R) 1:200, overnight at 4°C, followed by conjugation to the secondary antibody(SP-0023) and DAB(C-0010) staining