



## Rabbit Anti-NOX5 antibody

SL10156R

<b>Product Name:</b>	NOX5
<b>Chinese Name:</b>	还原型辅酶 II 氧化酶5/烟酰胺腺嘌呤二核苷酸磷酸抗体
<b>Alias:</b>	NADPH oxidase 5; NADPH oxidase EFhand calcium binding domain 5; NOX5; NOX5_HUMAN; MGC149776; MGC149777.
<b>Organism Species:</b>	Rabbit
<b>Clonality:</b>	Polyclonal
<b>React Species:</b>	Human,
<b>Applications:</b>	WB=1:500-2000ELISA=1:500-1000IHC-P=1:400-800IHC-F=1:400-800ICC=1:100-500IF=1:100-500 (Paraffin sections need antigen repair) not yet tested in other applications. optimal dilutions/concentrations should be determined by the end user.
<b>Molecular weight:</b>	84kDa
<b>Cellular localization:</b>	cytoplasmicThe cell membrane
<b>Form:</b>	Lyophilized or Liquid
<b>Concentration:</b>	1mg/ml
<b>immunogen:</b>	KLH conjugated synthetic peptide derived from human NOX5:501-600/765<Cytoplasmic>
<b>Lsotype:</b>	IgG
<b>Purification:</b>	affinity purified by Protein A
<b>Storage Buffer:</b>	0.01M TBS(pH7.4) with 1% BSA, 0.03% Proclin300 and 50% Glycerol.
<b>Storage:</b>	Store at -20 °C for one year. Avoid repeated freeze/thaw cycles. The lyophilized antibody is stable at room temperature for at least one month and for greater than a year when kept at -20°C. When reconstituted in sterile pH 7.4 0.01M PBS or diluent of antibody the antibody is stable for at least two weeks at 2-4 °C.
<b>PubMed:</b>	<a href="#">PubMed</a>
<b>Product Detail:</b>	Calcium-dependent NADPH oxidase that generates superoxide. Also functions as a calcium-dependent proton channel and may regulate redox-dependent processes in lymphocytes and spermatozoa. May play a role in cell growth and apoptosis.  <b>Function:</b>

Calcium-dependent NADPH oxidase that generates superoxide. Also functions as a calcium-dependent proton channel and may regulate redox-dependent processes in lymphocytes and spermatozoa. May play a role in cell growth and apoptosis. Isoform v2 and isoform v5 are involved in endothelial generation of reactive oxygen species (ROS), proliferation and angiogenesis and contribute to endothelial response to thrombin.

**Subcellular Location:**

Membrane; Multi-pass membrane protein (Potential). Isoform v2: Endoplasmic reticulum. Isoform v5: Endoplasmic reticulum.

**Tissue Specificity:**

Mainly expressed in pachytene spermatocytes of testis and in lymphocyte-rich areas of spleen and lymph nodes. Isoform v1 is expressed in spleen. Isoform v2 is expressed in testis. Also detected in ovary, placenta, pancreas, cardiac fibroblasts. Expressed in B-cells and prostate malignant cells. Isoform v1 and isoform v3 are expressed in epithelial colorectal adenocarcinoma cells. Isoform v2 and isoform v4 are expressed in endothelial cells. Isoform v1, isoform v2, isoform v3 and isoform v4 are expressed in pulmonary artery smooth muscle cells. Isoform v2 and isoform v5 are expressed in microvascular endothelial cells (at protein level).

**Similarity:**

Contains 4 EF-hand domains.  
Contains 1 FAD-binding FR-type domain.  
Contains 1 ferric oxidoreductase domain.

**SWISS:**

Q96PH1

**Gene ID:**

79400

**Database links:**

[Entrez Gene: 79400](#) Human

[Omim: 606572](#) Human

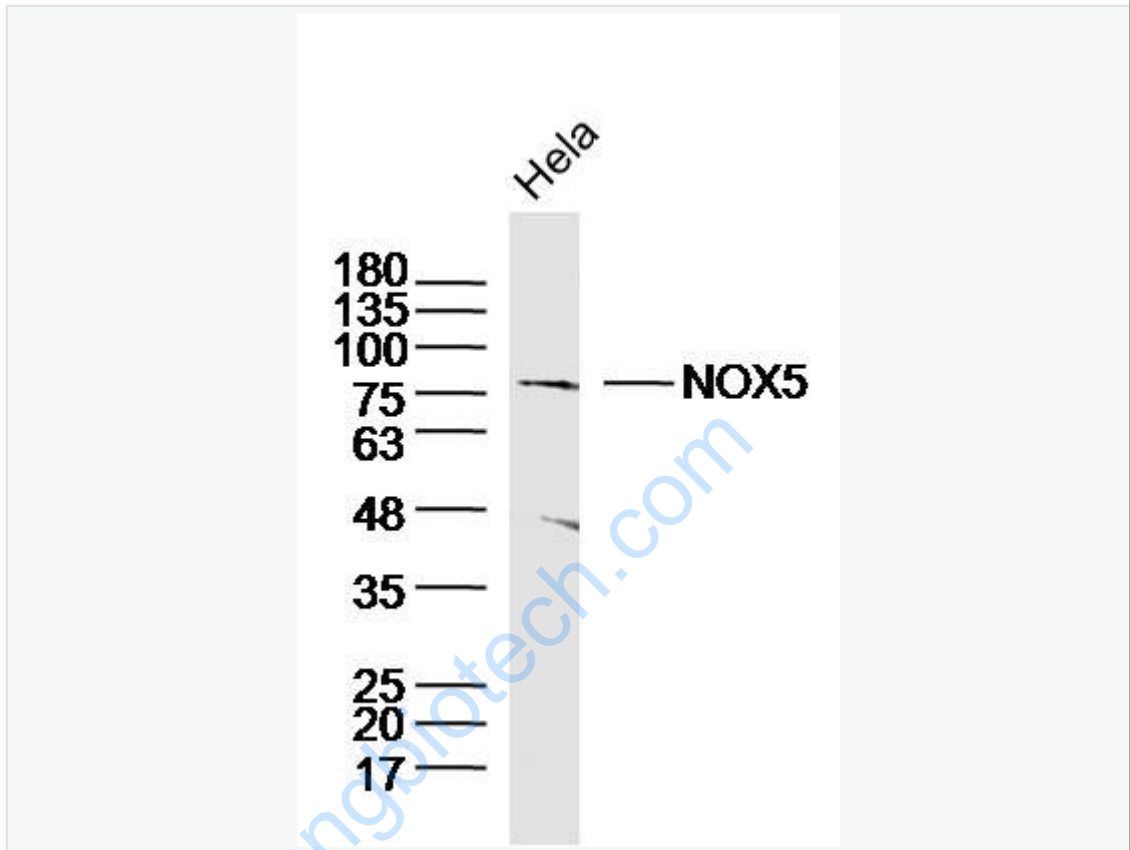
[SwissProt: Q96PH1](#) Human

[Unigene: 657932](#) Human

**Important Note:**

This product as supplied is intended for research use only, not for use in human, therapeutic or diagnostic applications.

Picture:



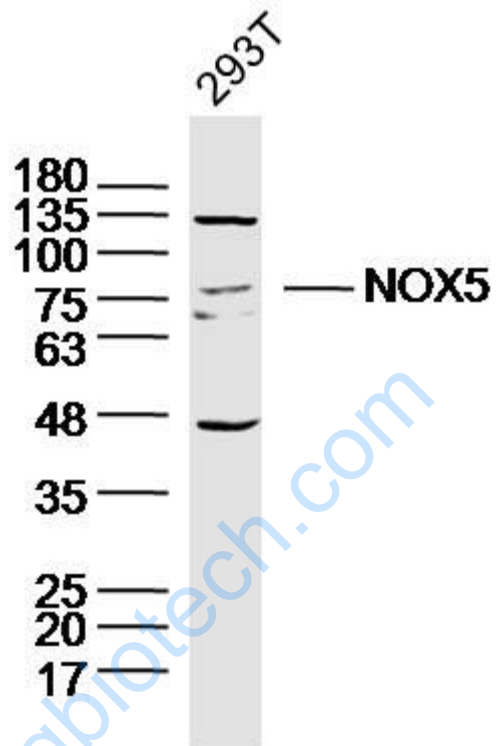
Sample: HeLa Cell (Human) Lysate at 30 ug

Primary: Anti-NOX5 (SL10156R) at 1/300 dilution

Secondary: IRDye800CW Goat Anti-Rabbit IgG at 1/20000 dilution

Predicted band size: 84kD

Observed band size: 84kD



Sample: 293T Cell (Human) Lysate at 30 ug

Primary: Anti-NOX5 (SL10156R) at 1/300 dilution

Secondary: IRDye800CW Goat Anti-Rabbit IgG at 1/20000 dilution

Predicted band size: 84kD

Observed band size: 84kD