



Rabbit Anti-PD-L1 antibody

SL10159R

Product Name:	PD-L1
Chinese Name:	程序性死亡配体1抗体
Alias:	CD274; B7 H; B7 H1; B7 homolog 1; B7-H1; B7H; B7H1; CD 274; CD274 antigen; CD274 molecule; MGC142294; MGC142296; OTTHUMP00000021029; PD L1; PD1L1_HUMAN; PD1L1_Mouse; PDCD1 ligand 1; PDCD1L1; PDCD1LG1; PDL 1; PDL1; Programmed cell death 1 ligand 1; Programmed death ligand 1; RGD1566211.
Organism Species:	Rabbit
Clonality:	Polyclonal
React Species:	Human,Mouse,Rat,Pig,Cow,Horse,Sheep,
Applications:	WB=1:500-2000ELISA=1:500-1000Flow-Cyt=1µg/Test not yet tested in other applications. optimal dilutions/concentrations should be determined by the end user.
Molecular weight:	32kDa
Cellular localization:	The cell membrane
Form:	Lyophilized or Liquid
Concentration:	1mg/ml
immunogen:	KLH conjugated synthetic peptide derived from human CD274:64-160/290<Extracellular>
Lsotype:	IgG
Purification:	affinity purified by Protein A
Storage Buffer:	0.01M TBS(pH7.4) with 1% BSA, 0.03% Proclin300 and 50% Glycerol.
Storage:	Store at -20 °C for one year. Avoid repeated freeze/thaw cycles. The lyophilized antibody is stable at room temperature for at least one month and for greater than a year when kept at -20°C. When reconstituted in sterile pH 7.4 0.01M PBS or diluent of antibody the antibody is stable for at least two weeks at 2-4 °C.
PubMed:	PubMed
Product Detail:	Programmed cell death 1 ligand 1(Programmed death ligand 1; PD-L1; PDCD1 ligand 1; B7 homolog 1; B7-H1; CD274) involved in the costimulatory signal, essential for T lymphocyte proliferation and production of IL10 and IFNG, in an IL2-dependent and a PDCD1-independent manner. Interaction with PDCD1 inhibit T-cell proliferation and

cytokine production.

Function:

Involved in the costimulatory signal, essential for T-cell proliferation and production of IL10 and IFNG, in an IL2-dependent and a PDCD1-independent manner. Interaction with PDCD1 inhibits T-cell proliferation and cytokine production.

Subunit:

Interacts with PDCD1.

Subcellular Location:

Isoform 1: Cell membrane; Single-pass type I membrane protein. Isoform 2: Endomembrane system; Single-pass type I membrane protein.

Tissue Specificity:

Highly expressed in the heart, skeletal muscle, placenta and lung. Weakly expressed in the thymus, spleen, kidney and liver. Expressed on activated T- and B-cells, dendritic cells, keratinocytes and monocytes.

Similarity:

Belongs to the immunoglobulin superfamily. BTN/MOG family.
Contains 1 Ig-like C2-type (immunoglobulin-like) domain.
Contains 1 Ig-like V-type (immunoglobulin-like) domain.

SWISS:

Q9NZQ7

Gene ID:

29126

Database links:

[Entrez Gene: 29126](#)Human

[Entrez Gene: 60533](#)Mouse

[Entrez Gene: 499342](#)Rat

[Omim: 605402](#)Human

[SwissProt: Q9NZQ7](#)Human

[SwissProt: Q9EP73](#)Mouse

[Unigene: 521989](#)Human

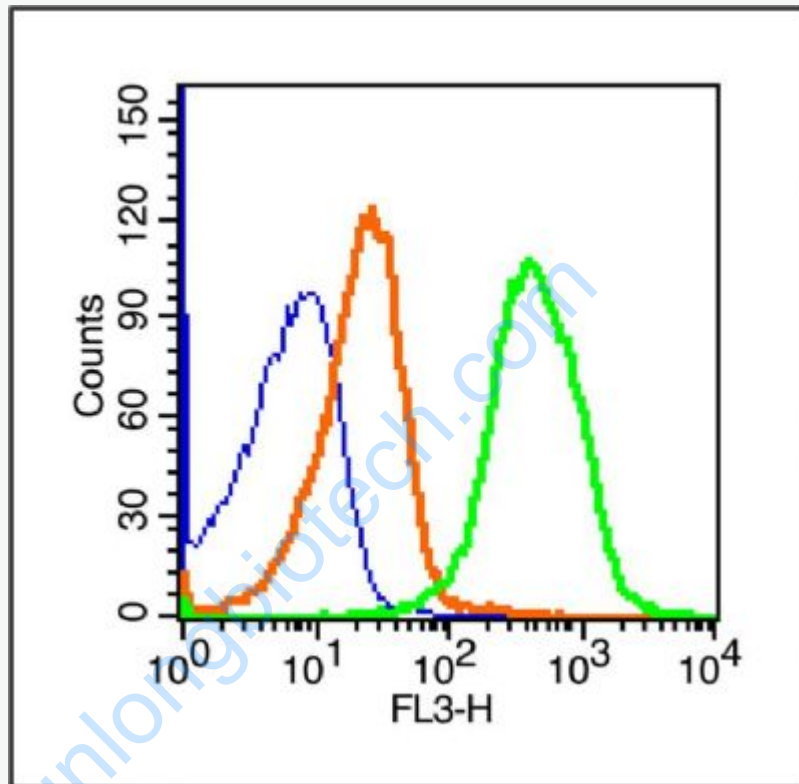
[Unigene: 245363](#)Mouse

[Unigene: 228198](#)Rat

Important Note:

This product as supplied is intended for research use only, not for use in human, therapeutic or diagnostic applications.

Picture:



Blank control (blue line): Mouse spleen cells(fixed with 70% ice-cold methanol overnight at 4°C).

Primary Antibody (green line): Rabbit Anti-CD274/PE-CY7 Conjugated antibody (SL10159R),Dilution: 1µg /10⁶ cells;

Isotype Control Antibody (orange line): Rabbit IgG-PE-CY7 .