



Rabbit Anti-ALDH1A1 antibody

SL10162R

Product Name:	ALDH1A1
Chinese Name:	乙醛脱氢酶1型抗体
Alias:	cytosolic; Acetaldehyde dehydrogenase 1; AHD2; Ahd-2; AL1A1_HUMAN; ALDC; Aldehyde dehydrogenase 1 family member A1; Aldehyde dehydrogenase 1 soluble; Aldehyde dehydrogenase 1A1; Aldehyde Dehydrogenase; Aldehyde dehydrogenase cytosolic; Aldehyde dehydrogenase family 1 member A1; Aldehyde dehydrogenase liver cytosolic; ALDH 1; ALDH 1A1; ALDH class 1; ALDH-E1; ALDH1 A1; ALDH1; ALDH11; ALHDII; MGC2318; PUMB1; RALDH 1; RalDH1; Retinal dehydrogenase 1; ALDEHYDE DEHYDROGENASE A1; Aldehyde Dehydrogenase Family 1, Subfamily A1.
Organism Species:	Rabbit
Clonality:	Polyclonal
React Species:	Human,Mouse,Rat,Cow,Horse,Rabbit,Sheep,
Applications:	WB=1:500-2000ELISA=1:500-1000IHC-P=1:400-800IHC-F=1:400-800ICC=1:100-500IF=1:100-500 (Paraffin sections need antigen repair) not yet tested in other applications. optimal dilutions/concentrations should be determined by the end user.
Molecular weight:	54kDa
Cellular localization:	cytoplasmic
Form:	Lyophilized or Liquid
Concentration:	1mg/ml
immunogen:	KLH conjugated synthetic peptide derived from human ALDH1:201-300/501
Lsotype:	IgG
Purification:	affinity purified by Protein A
Storage Buffer:	0.01M TBS(pH7.4) with 1% BSA, 0.03% Proclin300 and 50% Glycerol.
Storage:	Store at -20 °C for one year. Avoid repeated freeze/thaw cycles. The lyophilized antibody is stable at room temperature for at least one month and for greater than a year when kept at -20°C. When reconstituted in sterile pH 7.4 0.01M PBS or diluent of antibody the antibody is stable for at least two weeks at 2-4 °C.
PubMed:	PubMed

This protein belongs to the aldehyde dehydrogenases family of proteins. Aldehyde dehydrogenase is the second enzyme of the major oxidative pathway of alcohol metabolism. Two major liver isoforms of this enzyme, cytosolic and mitochondrial, can be distinguished by their electrophoretic mobilities, kinetic properties, and subcellular localizations. Most Caucasians have two major isozymes, while approximately 50% of Orientals have only the cytosolic isozyme, missing the mitochondrial isozyme. A remarkably higher frequency of acute alcohol intoxication among Orientals than among Caucasians could be related to the absence of the mitochondrial isozyme. This gene encodes a cytosolic isoform, which has a high affinity for aldehydes. [provided by RefSeq]

Function:

Binds free retinal and cellular retinol-binding protein-bound retinal. Can convert/oxidize retinaldehyde to retinoic acid.

Subunit:

Homodimer.

Subcellular Location:

Cytoplasm.

Tissue Specificity:

Expressed in the liver, lung, and testis. Apparently not expressed at detectable levels in kidney, stomach, ovary, heart, and brain.

Similarity:

Belongs to the aldehyde dehydrogenase family.

SWISS:

P00352

Gene ID:

216

Database links:

[Entrez Gene: 216](#)Human

[Entrez Gene: 11668](#)Mouse

[Entrez Gene: 24188](#)Rat

[Entrez Gene: 443343](#)Sheep

[Omim: 100640](#)Human

[SwissProt: P00352](#)Human

[SwissProt: P24549](#)Mouse

Product Detail:

[SwissProt: P51647](#)Rat

[SwissProt: P51977](#)Sheep

[Unigene: 76392](#)Human

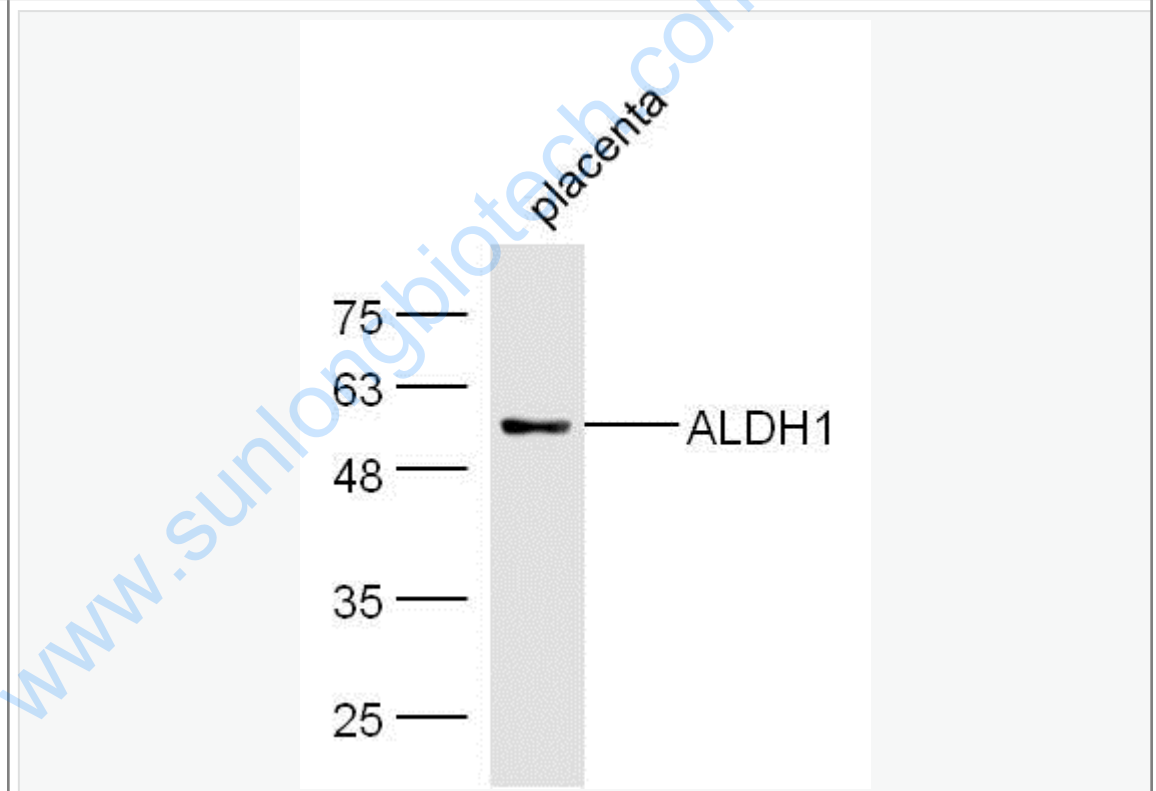
[Unigene: 250866](#)Mouse

[Unigene: 6132](#)Rat

Important Note:

This product as supplied is intended for research use only, not for use in human, therapeutic or diagnostic applications.

Picture:



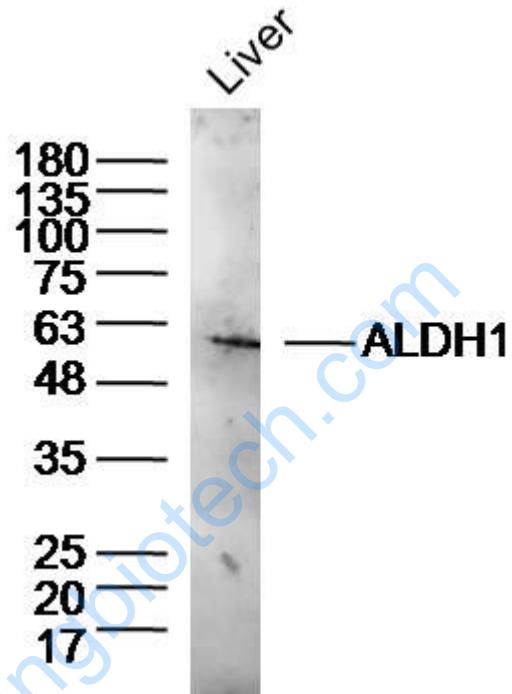
Sample: Placenta (Mouse) Lysate at 40 ug

Primary: Anti-ALDH1 (SL10162R) at 1/300 dilution

Secondary: IRDye800CW Goat Anti-Rabbit IgG at 1/20000 dilution

Predicted band size: 54 kD

Observed band size: 54 kD



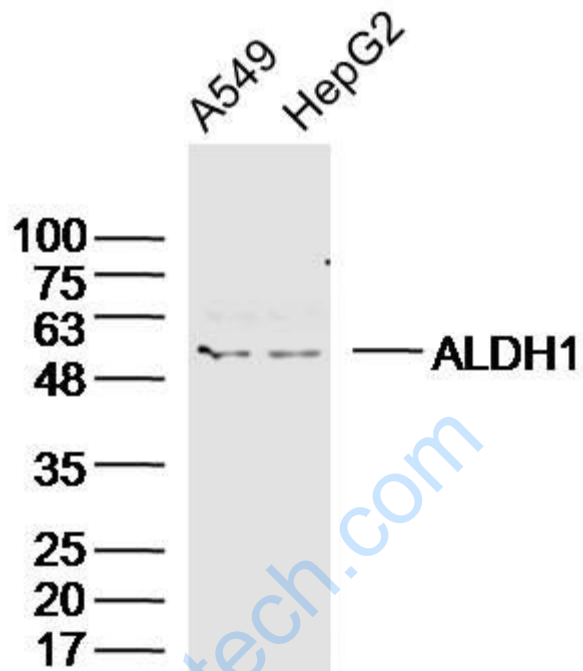
Sample: Liver (mouse) Lysate at 40 ug

Primary: Anti- ALDH1 (SL10162R) at 1/300 dilution

Secondary: IRDye800CW Goat Anti-Rabbit IgG at 1/20000 dilution

Predicted band size: 54 kD

Observed band size: 54 kD



Sample:

A549 Cell (Human) Lysate at 40 ug

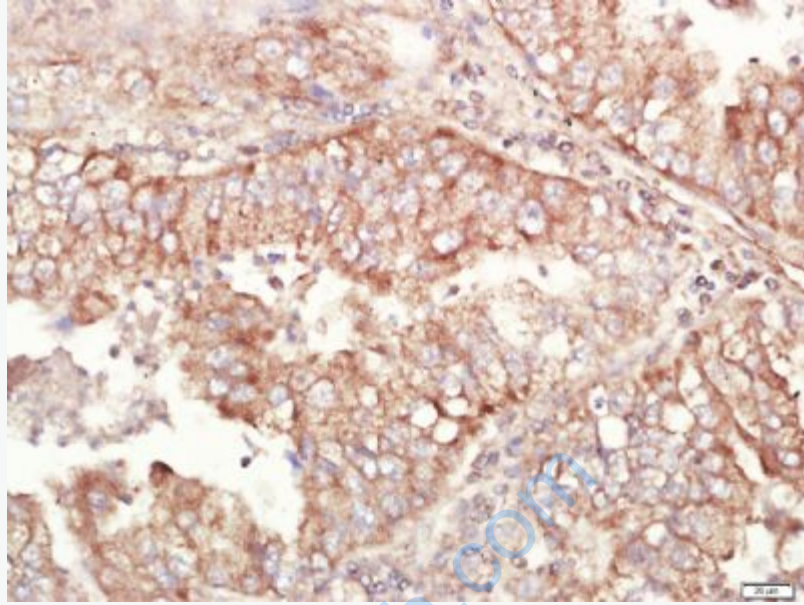
HepG2 Cell (Human) Lysate at 40 ug

Primary: Anti-ALDH1(SL10162R)at 1/300 dilution

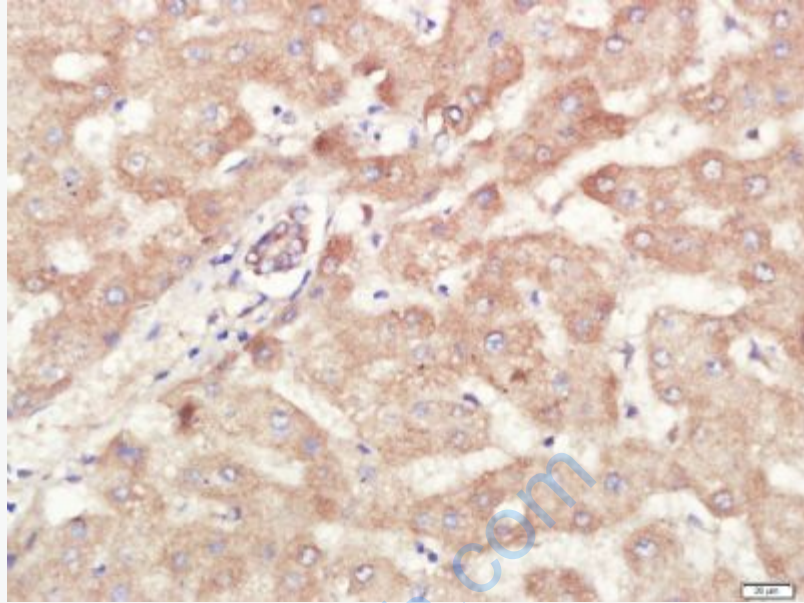
Secondary: IRDye800CW Goat Anti-Rabbit IgG at 1/20000 dilution

Predicted band size: 54kD

Observed band size: 54kD



Paraformaldehyde-fixed, paraffin embedded (human lung cancer); Antigen retrieval by boiling in sodium citrate buffer (pH6.0) for 15min; Block endogenous peroxidase by 3% hydrogen peroxide for 20 minutes; Blocking buffer (normal goat serum) at 37°C for 30min; Antibody incubation with (ALDH1) Polyclonal Antibody, Unconjugated (SL10162R) at 1:400 overnight at 4°C, followed by a conjugated secondary (sp-0023) for 20 minutes and DAB staining.



Paraformaldehyde-fixed, paraffin embedded (human liver cancer); Antigen retrieval by boiling in sodium citrate buffer (pH6.0) for 15min; Block endogenous peroxidase by 3% hydrogen peroxide for 20 minutes; Blocking buffer (normal goat serum) at 37°C for 30min; Antibody incubation with (ALDH1) Polyclonal Antibody, Unconjugated (SL10162R) at 1:400 overnight at 4°C, followed by a conjugated secondary (sp-0023) for 20 minutes and DAB staining.