



Rabbit Anti-HRH4/GPCR105 antibody

SL10165R

Product Name:	HRH4/GPCR105
Chinese Name:	组织胺H4受体抗体
Alias:	GPCR105; GPRv53; H4 antibody H4R; HH4R; Histamine H4 receptor; AXOR35; BG26; G protein coupled receptor 105; HRH4_HUMAN; SP9144.
Organism Species:	Rabbit
Clonality:	Polyclonal
React Species:	Human,
Applications:	WB=1:500-2000ELISA=1:500-1000IHC-P=1:400-800IHC-F=1:400-800ICC=1:100-500IF=1:100-500 (Paraffin sections need antigen repair) not yet tested in other applications. optimal dilutions/concentrations should be determined by the end user.
Molecular weight:	44kDa
Cellular localization:	The cell membrane
Form:	Lyophilized or Liquid
Concentration:	1mg/ml
immunogen:	KLH conjugated synthetic peptide derived from human HRH4/GPCR105:285-390/390<Extracellular>
Lsotype:	IgG
Purification:	affinity purified by Protein A
Storage Buffer:	0.01M TBS(pH7.4) with 1% BSA, 0.03% Proclin300 and 50% Glycerol.
Storage:	Store at -20 °C for one year. Avoid repeated freeze/thaw cycles. The lyophilized antibody is stable at room temperature for at least one month and for greater than a year when kept at -20°C. When reconstituted in sterile pH 7.4 0.01M PBS or diluent of antibody the antibody is stable for at least two weeks at 2-4 °C.
PubMed:	PubMed
Product Detail:	Histamine is a ubiquitous messenger molecule released from mast cells, enterochromaffin-like cells, and neurons. Its various actions are mediated by histamine receptors H1, H2, H3 and H4. Histamine receptor H4 belongs to the family 1 of G protein-coupled receptors and has the highest homology to histamine receptor H3 among known G protein-coupled receptors.The Histamine H4 receptor has been reported in

human blood peripheral leukocytes, bone marrow, colon, liver, lung, small intestine, spleen, testis, thymus, tonsil, and trachea.

Function:

The H4 subclass of histamine receptors could mediate the histamine signals in peripheral tissues. Displays a significant level of constitutive activity (spontaneous activity in the absence of agonist)

Subcellular Location:

Cell membrane; Multi-pass membrane protein.

Tissue Specificity:

Expressed primarily in the bone marrow and eosinophils. Shows preferential distribution in cells of immunological relevance such as T-cells, dendritic cells, monocytes, mast cells, neutrophils. Also expressed in a wide variety of peripheral tissues, including the heart, kidney, liver, lung, pancreas, skeletal muscle, prostate, small intestine, spleen, testis, colon, fetal liver and lymph node.

Similarity:

Belongs to the G-protein coupled receptor 1 family.

SWISS:

Q9H3N8

Gene ID:

59340

Database links:

[Entrez Gene: 59340](#) Human

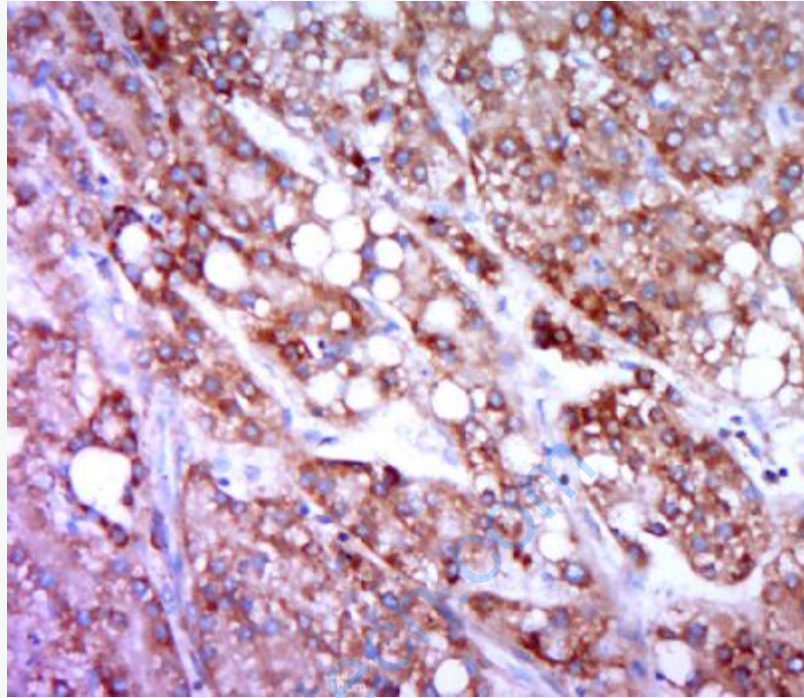
[Omim: 606792](#) Human

[SwissProt: Q9H3N8](#) Human

[Unigene: 287388](#) Human

Important Note:

This product as supplied is intended for research use only, not for use in human, therapeutic or diagnostic applications.



Picture:

Paraformaldehyde-fixed, paraffin embedded (human liver carcinoma); Antigen retrieval by boiling in sodium citrate buffer (pH6.0) for 15min; Block endogenous peroxidase by 3% hydrogen peroxide for 20 minutes; Blocking buffer (normal goat serum) at 37°C for 30min; Antibody incubation with (HRH4) Polyclonal Antibody, Unconjugated (SL10165R) at 1:400 overnight at 4°C, followed by a conjugated secondary (sp-0023) for 20 minutes and DAB staining.