



Rabbit Anti-PRAS40 antibody

SL10176R

Product Name:	PRAS40
Chinese Name:	蛋白激酶AKT底物1抗体
Alias:	AKT1 substrate 1 (proline rich); AKT1 substrate 1; AKT1-S1; AKT1S-1; AKT1S 1; AKT1S1; Lobe; PRAS 40; PRAS-40; PRAS40; Proline rich akt substrate; 40 kDa proline rich AKT substrate; 40 kDa proline-rich AKT substrate; AKT1 S1; AKT1 substrate 1; AKTS1_HUMAN; MGC2865; PRAS40; Proline rich Akt substrate 40 kDa; Proline-rich AKT1 substrate 1.
Organism Species:	Rabbit
Clonality:	Polyclonal
React Species:	Human,Mouse,Rat,Pig,Cow,Horse,Sheep,
Applications:	WB=1:500-2000ELISA=1:500-1000IHC-P=1:400-800IHC-F=1:400-800ICC=1:100-500IF=1:100-500 (Paraffin sections need antigen repair) not yet tested in other applications. optimal dilutions/concentrations should be determined by the end user.
Molecular weight:	28kDa
Cellular localization:	cytoplasmic
Form:	Lyophilized or Liquid
Concentration:	1mg/ml
immunogen:	KLH conjugated synthetic peptide derived from human PRAS40:161-256/256
Lsotype:	IgG
Purification:	affinity purified by Protein A
Storage Buffer:	0.01M TBS(pH7.4) with 1% BSA, 0.03% Proclin300 and 50% Glycerol.
Storage:	Store at -20 °C for one year. Avoid repeated freeze/thaw cycles. The lyophilized antibody is stable at room temperature for at least one month and for greater than a year when kept at -20°C. When reconstituted in sterile pH 7.4 0.01M PBS or diluent of antibody the antibody is stable for at least two weeks at 2-4 °C.
PubMed:	PubMed
Product Detail:	Proline Rich Akt Substrate (PRAS40) is a 40 kDa substrate of Akt. Akt and PRAS40 can be found in the phosphoinositide 3 kinase (PI3K) pathway, which plays a role in glucose uptake, cell growth, and apoptosis inhibition. PRAS40 is a 14-3-3 binding

protein that reacts with insulin, but whose precise function is not yet known. It may bind SH3 and WW domain containing proteins resulting in a change of function. Activated Akt phosphorylates PRAS40 on threonine 246. Mutation of PRAS40 threonine 246 has been shown to be apoptotic.

Function:

Subunit of mTORC1, which regulates cell growth and survival in response to nutrient and hormonal signals. mTORC1 is activated in response to growth factors or amino-acids. Growth factor-stimulated mTORC1 activation involves a AKT1-mediated phosphorylation of TSC1-TSC2, which leads to the activation of the RHEB GTPase that potently activates the protein kinase activity of mTORC1. Amino-acid-signaling to mTORC1 requires its relocalization to the lysosomes mediated by the Ragulator complex and the Rag GTPases. Activated mTORC1 up-regulates protein synthesis by phosphorylating key regulators of mRNA translation and ribosome synthesis. mTORC1 phosphorylates EIF4EBP1 and releases it from inhibiting the elongation initiation factor 4E (eIF4E). mTORC1 phosphorylates and activates S6K1 at 'Thr-389', which then promotes protein synthesis by phosphorylating PDCD4 and targeting it for degradation. Within mTORC1, AKT1S1 negatively regulates mTOR activity in a manner that is dependent on its phosphorylation state and binding to 14-3-3 proteins. Inhibits RHEB-GTP-dependent mTORC1 activation. Substrate for AKT1 phosphorylation, but can also be activated by AKT1-independent mechanisms. May also play a role in nerve growth factor-mediated neuroprotection.

Subunit:

Part of the mammalian target of rapamycin complex 1 (mTORC1) which contains MTOR, MLST8, RPTOR, AKT1S1/PRAS40 and DEPTOR. mTORC1 binds to and is inhibited by FKBP12-rapamycin. Interacts directly with RPTOR. The phosphorylated form interacts with 14-3-3 proteins.

Subcellular Location:

Cytoplasm, cytosol.

Tissue Specificity:

Widely expressed with highest levels of expression in liver and heart. Expressed at higher levels in cancer cell lines (e.g. A-549 and HeLa) than in normal cell lines (e.g. HEK293).

Post-translational modifications:

Phosphorylated by AKT1. Phosphorylation relieves inhibitory function on mTORC1.

Similarity:

Belongs to the PDGF/VEGF growth factor family.

SWISS:

Q96B36

Gene ID:
84335

Database links:

[Entrez Gene: 84335](#) Human

[Entrez Gene: 67605](#) Mouse

[Entrez Gene: 292887](#) Rat

[Omim: 610221](#) Human

[SwissProt: Q96B36](#) Human

[SwissProt: Q9D1F4](#) Mouse

[Unigene: 515542](#) Human

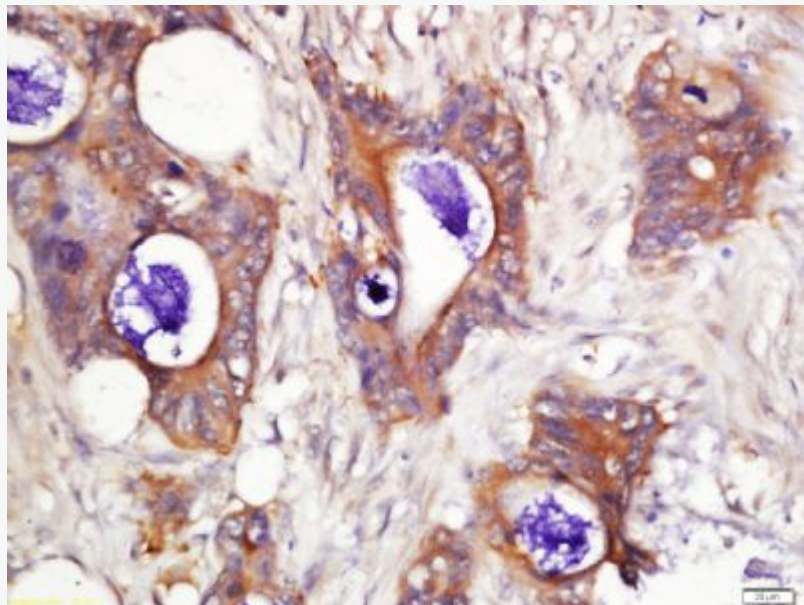
[Unigene: 148007](#) Mouse

[Unigene: 102669](#) Rat

Important Note:

This product as supplied is intended for research use only, not for use in human, therapeutic or diagnostic applications.

Picture:



Tissue/cell: human cervical cancer; 4% Paraformaldehyde-fixed and paraffin-embedded;

Antigen retrieval: citrate buffer (0.01M, pH 6.0), Boiling bathing for 15min; Block endogenous peroxidase by 3% Hydrogen peroxide for 30min; Blocking buffer (normal goat serum,C-0005) at 37°C for 20 min;

Incubation: Anti-PRAS40 Polyclonal Antibody, Unconjugated(SL10176R) 1:200, overnight at 4°C, followed by conjugation to the secondary antibody(SP-0023) and DAB(C-0010) staining