



Rabbit Anti-phospho-BACE1 (Ser498) antibody

SL10192R

Product Name:	phospho-BACE1 (Ser498)
Chinese Name:	磷酸化β分泌酶抗体
Alias:	BACE1 (phospho-Ser498); BACE1 (phospho-S498); p-BACE1 (Ser498); p-BACE1 (Se498); APP beta secretase; Asp 2; ASP2; Aspartyl protease 2; BACE 1; BACE; Beta secretase 1; Beta secretase; Beta site amyloid beta A4 precursor protein cleaving enzyme; Beta site amyloid precursor protein cleaving enzyme 1; Beta site amyloid precursor protein cleaving enzyme; Beta site APP cleaving enzyme 1; Beta site APP cleaving enzyme; FLJ90568; HSPC104; KIAA1149; Memapsin-2; Memapsin 2; Memapsin2; Membrane associated aspartic protease 2; Transmembrane aspartic proteinase Asp2; BACE1_HUMAN; Beta-secretase 1; Beta-site amyloid precursor protein cleaving enzyme 1; Beta-site APP cleaving enzyme 1; Membrane-associated aspartic protease 2.
Organism Species:	Rabbit
Clonality:	Polyclonal
React Species:	Human,Mouse,Rat,Chicken,Dog,Pig,Cow,Horse,Rabbit,
Applications:	WB=1:500-2000ELISA=1:500-1000IHC-P=1:400-800IHC-F=1:400-800ICC=1:100-500IF=1:100-500 (Paraffin sections need antigen repair) not yet tested in other applications. optimal dilutions/concentrations should be determined by the end user.
Molecular weight:	51kDa
Cellular localization:	cytoplasmic
Form:	Lyophilized or Liquid
Concentration:	1mg/ml
immunogen:	KLH conjugated Synthesised phosphopeptide derived from human BACE1 around the phosphorylation site of Ser498:DI(p-S)LL
Lsotype:	IgG
Purification:	affinity purified by Protein A
Storage Buffer:	0.01M TBS(pH7.4) with 1% BSA, 0.03% Proclin300 and 50% Glycerol.
Storage:	Store at -20 °C for one year. Avoid repeated freeze/thaw cycles. The lyophilized

	antibody is stable at room temperature for at least one month and for greater than a year when kept at -20°C. When reconstituted in sterile pH 7.4 0.01M PBS or diluent of antibody the antibody is stable for at least two weeks at 2-4 °C.
PubMed:	PubMed
Product Detail:	<p>Cerebral deposition of amyloid beta peptide is an early and critical feature of Alzheimer's disease. Amyloid beta peptide is generated by proteolytic cleavage of amyloid precursor protein (APP) by two proteases, one of which is the protein encoded by this gene. The encoded protein, a member of the peptidase A1 protein family, is a type I integral membrane glycoprotein and aspartic protease that is found mainly in the Golgi. Multiple transcript variants encoding different isoforms have been described for this gene. [provided by RefSeq].</p> <p>Function: Responsible for the proteolytic processing of the amyloid precursor protein (APP). Cleaves at the N-terminus of the A-beta peptide sequence, between residues 671 and 672 of APP, leads to the generation and extracellular release of beta-cleaved soluble APP, and a corresponding cell-associated C-terminal fragment which is later released by gamma-secretase.</p> <p>Subunit: Responsible for the proteolytic processing of the amyloid precursor protein (APP). Cleaves at the N-terminus of the A-beta peptide sequence, between residues 671 and 672 of APP, leads to the generation and extracellular release of beta-cleaved soluble APP, and a corresponding cell-associated C-terminal fragment which is later released by gamma-secretase.</p> <p>Subcellular Location: Membrane.</p> <p>Tissue Specificity: Expressed at high levels in the brain and pancreas. In the brain, expression is highest in the substantia nigra, locus coeruleus and medulla oblongata.</p> <p>Post-translational modifications: Glycosylated.</p> <p>Similarity: Belongs to the peptidase A1 family.</p> <p>SWISS: P56817</p> <p>Gene ID: 23621</p> <p>Database links:</p>

[Entrez Gene: 23621](#) Human

[Entrez Gene: 23821](#) Mouse

[Entrez Gene: 29392](#) Rat

[Omim: 604252](#) Human

[SwissProt: P56817](#) Human

[SwissProt: P56818](#) Mouse

[SwissProt: P56819](#) Rat

[Unigene: 504003](#) Human

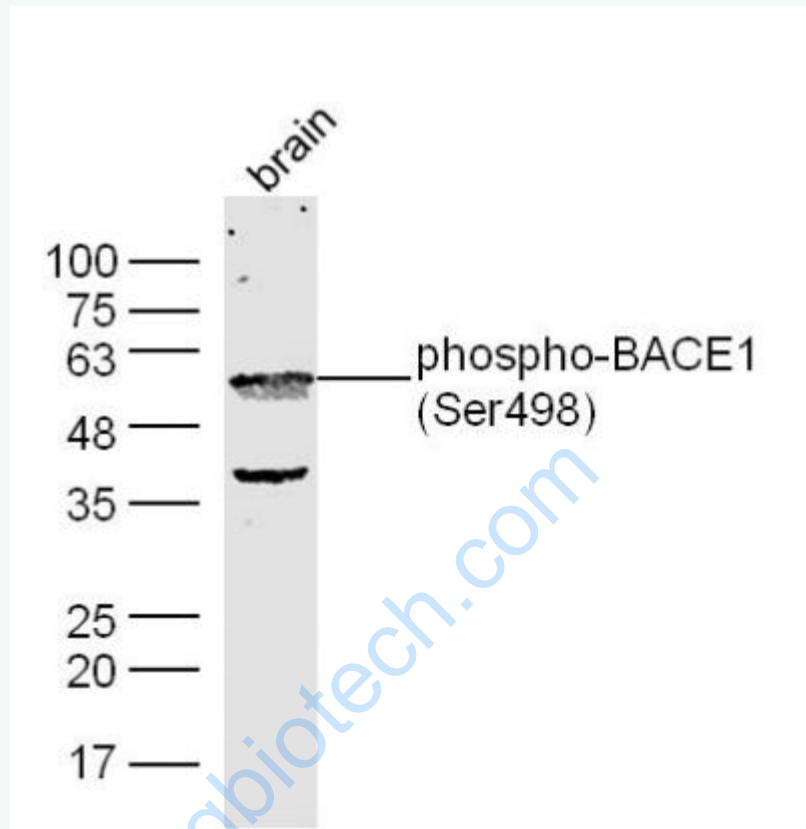
[Unigene: 24044](#) Mouse

[Unigene: 207201](#) Rat

Important Note:

This product as supplied is intended for research use only, not for use in human, therapeutic or diagnostic applications.

Picture:



Sample:

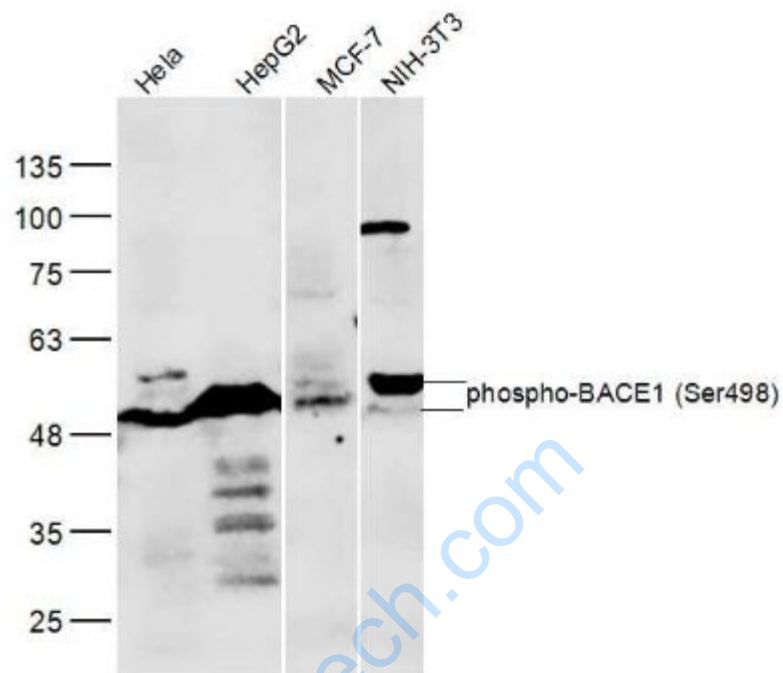
Brain (Mouse) Lysate at 40 ug

Primary: Anti-phospho-BACE1 (Ser498) (SL10192R) at 1/300 dilution

Secondary: IRDye800CW Goat Anti-Rabbit IgG at 1/20000 dilution

Predicted band size: 51 kD

Observed band size: 51/56 kD



Sample:

HeLa(Human) Cell Lysate at 30 ug

HepG2(Human) Cell Lysate at 30 ug

MCF-7(Human) Cell Lysate at 30 ug

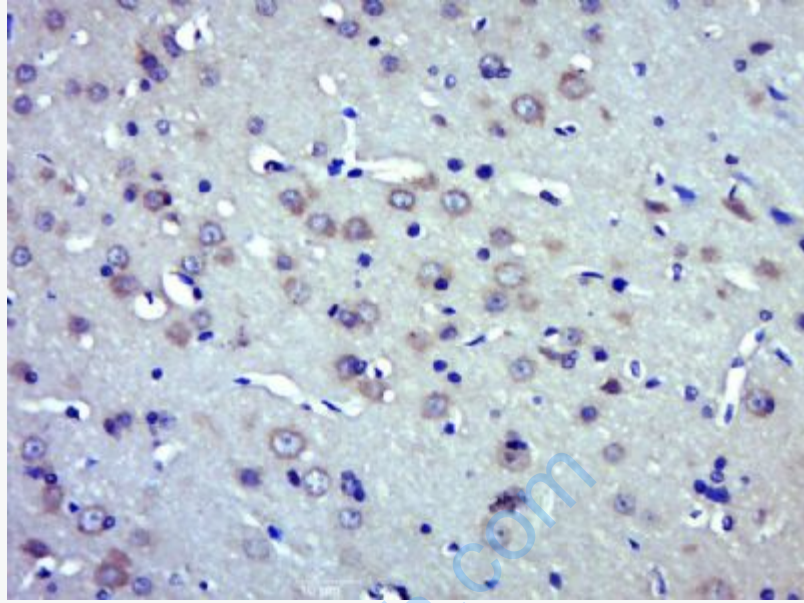
NIH-3T3 (Mouse) Cell Lysate at 30 ug

Primary: Anti-phospho-BACE1 (Ser498) (SL10192R) at 1/300 dilution

Secondary: IRDye800CW Goat Anti-Rabbit IgG at 1/20000 dilution

Predicted band size: 51 kD

Observed band size: 51/56 kD



Paraformaldehyde-fixed, paraffin embedded (Mouse brain); Antigen retrieval by boiling in sodium citrate buffer (pH6.0) for 15min; Block endogenous peroxidase by 3% hydrogen peroxide for 20 minutes; Blocking buffer (normal goat serum) at 37°C for 30min; Antibody incubation with (phospho-BACE1 (Ser498)) Polyclonal Antibody, Unconjugated (SL10192R) at 1:500 overnight at 4°C, followed by a conjugated secondary (sp-0023) for 20 minutes and DAB staining.