




## Rabbit Anti-TLR2 antibody

SL1019R

<b>Product Name:</b>	TLR2
<b>Chinese Name:</b>	Toll样受体2抗体
<b>Alias:</b>	Toll-like receptor 2; Toll like receptor 2; Toll like receptor 2 precursor; Toll-like receptor 2; TLR 2; TLR-2; Toll/interleukin-1 receptor-like protein 4; CD282 antigen; CD282; TIL 4; TIL4; TLR2_HUMAN; Toll/interleukin 1 receptor like 4; Toll/interleukin 1 receptor like protein 4; Toll/interleukin receptor like protein 4.
<b>文献引用</b> 	<p><b>Specific References(7)</b> SL1019R has been referenced in 7 publications.</p> <p><b>[IF=2.02]</b>Tomofuji, Takaaki, et al. "Involvement of toll-like receptor 2 and 4 in association between dyslipidemia and osteoclast differentiation in apolipoprotein E deficient rat periodontium." <i>Lipids in Health and Disease</i> 12.1 (2013): 1.<b>Rat.</b> <a href="#">PubMed:23295061</a></p> <p><b>[IF=1.55]</b>Tang, Lu, et al. "Expression of TRAF6 and pro-inflammatory cytokines through activation of TLR2, TLR4, NOD1, and NOD2 in human periodontal ligament fibroblasts." <i>Archives of Oral Biology</i> 56.10 (2011): 1064-1072.<b>Human.</b> <a href="#">PubMed:21457942</a></p> <p><b>[IF=3.48]</b>Chen, Xiaoming, et al. "Sargassum fusiforme polysaccharide activates nuclear factor kappa-B (NF-κB) and induces cytokine production via Toll-like receptors." <i>Carbohydrate Polymers</i> (2014).<b>other;Rat.</b> <a href="#">PubMed:24708959</a></p> <p><b>[IF=3.73]</b>Tan, Yan, et al. "Stiffening-Induced High Pulsatility Flow Activates Endothelial Inflammation via a TLR2/NF-κB Pathway." <i>PLoS one</i> 9.7 (2014).<b>WB;Bovine.</b> <a href="#">PubMed:25029271</a></p>

	<p><b>[IF=4.50]</b>Mannic, Tiphaine, et al. "CD14 as a mediator of the Mineralocorticoid Receptor-dependent anti-apolipoproteinA-1 IgG chronotropic effect on cardiomyocytes."Endocrinology (2015): en-2015.<b>other;Rat.</b></p> <p style="text-align: center;"><a href="#">PubMed:26393305</a></p> <p><b>[IF=1.55]</b>Zhu, Ya?Jun, et al. "Toll-like receptor-2 and-4 are associated with hyperlipidemia." Molecular Medicine Reports.<b>other;</b></p> <p style="text-align: center;"><a href="#">PubMed:26497845</a></p> <p><b>[IF=2.70]</b>Hardigan, Trevor, Yasir Abdul, and Advije Ergul. "Linagliptin reduces effects of ET-1 and TLR2-mediated cerebrovascular hyperreactivity in diabetes." Life Sciences (2016).<b>IHC-F;Rat.</b></p> <p style="text-align: center;"><a href="#">PubMed:26898123</a></p>
<b>Organism Species:</b>	Rabbit
<b>Clonality:</b>	Polyclonal
<b>React Species:</b>	Human,Mouse,Rat,Chicken,Dog,Pig,Cow,Sheep,
<b>Applications:</b>	WB=1:500-2000IHC-P=1:400-800IHC-F=1:400-800 (Paraffin sections need antigen repair) not yet tested in other applications. optimal dilutions/concentrations should be determined by the end user.
<b>Molecular weight:</b>	84kDa
<b>Cellular localization:</b>	The cell membrane
<b>Form:</b>	Lyophilized or Liquid
<b>Concentration:</b>	1mg/ml
<b>immunogen:</b>	KLH conjugated synthetic peptide derived from human TLR2:701-784/784<Cytoplasmic>
<b>Lsotype:</b>	IgG
<b>Purification:</b>	affinity purified by Protein A
<b>Storage Buffer:</b>	0.01M TBS(pH7.4) with 1% BSA, 0.03% Proclin300 and 50% Glycerol.
<b>Storage:</b>	Store at -20 °C for one year. Avoid repeated freeze/thaw cycles. The lyophilized antibody is stable at room temperature for at least one month and for greater than a year when kept at -20°C. When reconstituted in sterile pH 7.4 0.01M PBS or diluent of antibody the antibody is stable for at least two weeks at 2-4 °C.
<b>PubMed:</b>	<a href="#">PubMed</a>
<b>Product Detail:</b>	The protein encoded by this gene is a member of the Toll-like receptor (TLR) family which plays a fundamental role in pathogen recognition and activation of innate immunity. TLRs are highly conserved from Drosophila to humans and share structural and functional similarities. They recognize pathogen-associated molecular patterns (PAMPs) that are expressed on infectious agents, and mediate the production of cytokines necessary for the development of effective immunity. The various TLRs exhibit different patterns of expression. This gene is expressed most abundantly in peripheral blood leukocytes, and mediates host response to Gram-positive bacteria and yeast via stimulation of NF-kappaB. [provided by RefSeq, Jul 2008].

**Function:**

Cooperates with LY96 to mediate the innate immune response to bacterial lipoproteins and other microbial cell wall components. Cooperates with TLR1 to mediate the innate immune response to bacterial lipoproteins or lipopeptides. Acts via MYD88 and TRAF6, leading to NF-kappa-B activation, cytokine secretion and the inflammatory response. May also promote apoptosis in response to lipoproteins. Recognizes mycoplasmal macrophage-activating lipopeptide-2kD (MALP-2), soluble tuberculosis factor (STF), phenol-soluble modulins (PSM) and B.burgdorferi outer surface protein A lipoprotein (OspA-L) cooperatively with TLR6.

**Subunit:**

Interacts with LY96, TLR1 and TLR6 (via extracellular domain). Binds MYD88 (via TIR domain). Interacts with TICAM1. Ligand binding induces the formation of a heterodimer with TLR1. Interacts with CNPY3.

**Subcellular Location:**

Membrane; Single-pass type I membrane protein.

**Tissue Specificity:**

Highly expressed in peripheral blood leukocytes, in particular in monocytes, in bone marrow, lymph node and in spleen. Also detected in lung and in fetal liver. Levels are low in other tissues.

**Post-translational modifications:**

Glycosylation of Asn-442 is critical for secretion of the N-terminal ectodomain of TLR2.

**Similarity:**

Belongs to the Toll-like receptor family.  
Contains 14 LRR (leucine-rich) repeats.  
Contains 1 TIR domain.

**SWISS:**

O60603

**Gene ID:**

7097

**Database links:**

[Entrez Gene: 7097](#) Human

[Entrez Gene: 24088](#) Mouse

[Entrez Gene: 310553](#) Rat

[Oimim: 603028](#) Human

[SwissProt: O60603](#) Human

[SwissProt: Q9QUN7](#) Mouse

[Unigene: 519033](#) Human

[Unigene: 87596](#) Mouse

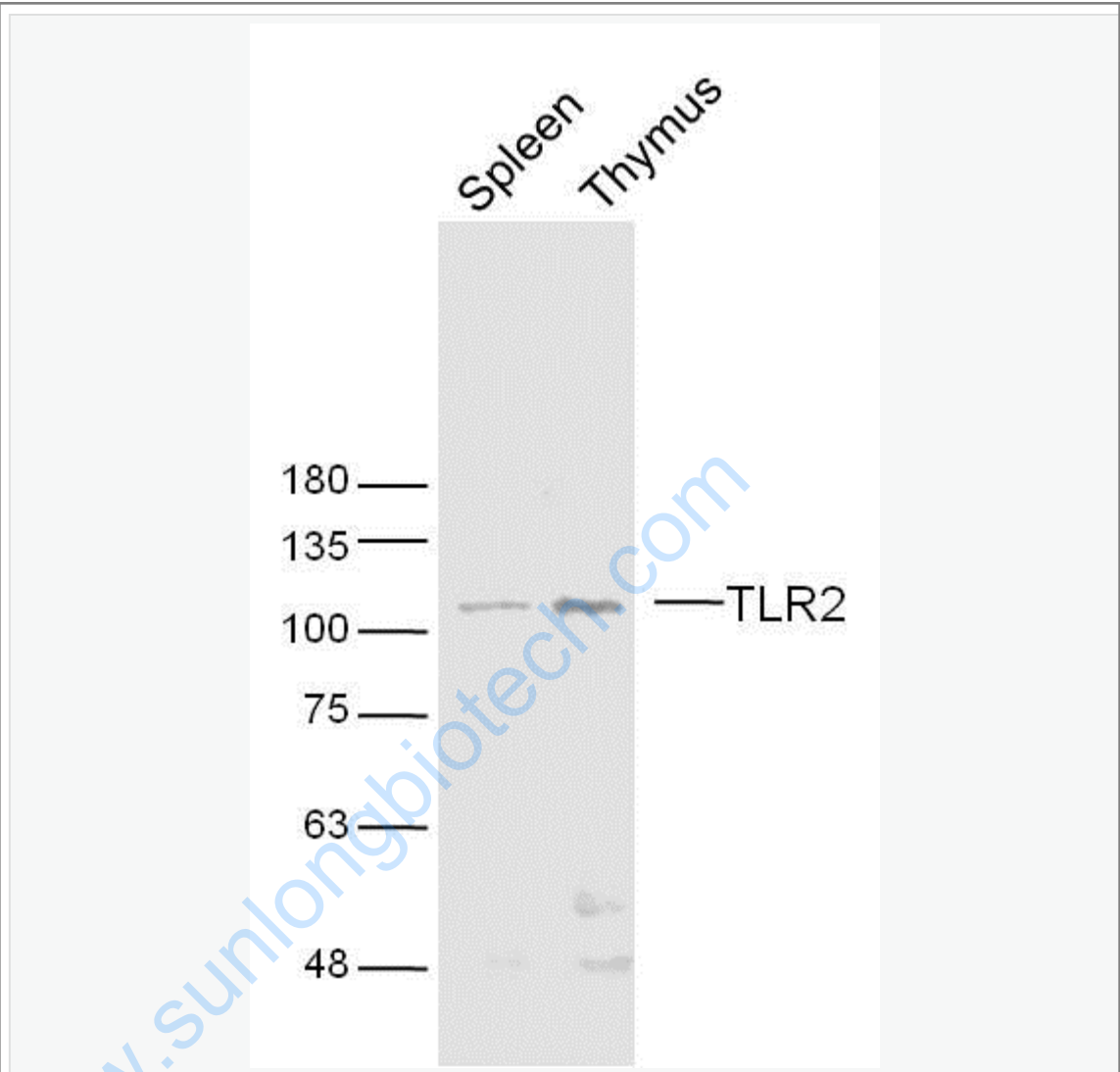
**Important Note:**

This product as supplied is intended for research use only, not for use in human, therapeutic or diagnostic applications.

Toll样受体2(TLR2)通过激活天然免疫,参与特异性免疫应答的启动, Toll样受体2(TLR2)作为一种重要跨膜Signal transduction受体参与了内毒素诱发炎症反应的病理过程,对其调控机制的研究日益受到关注。

www.sunlongbiotech.com

Picture:



Sample:

Spleen(Mouse) Lysate at 40 ug

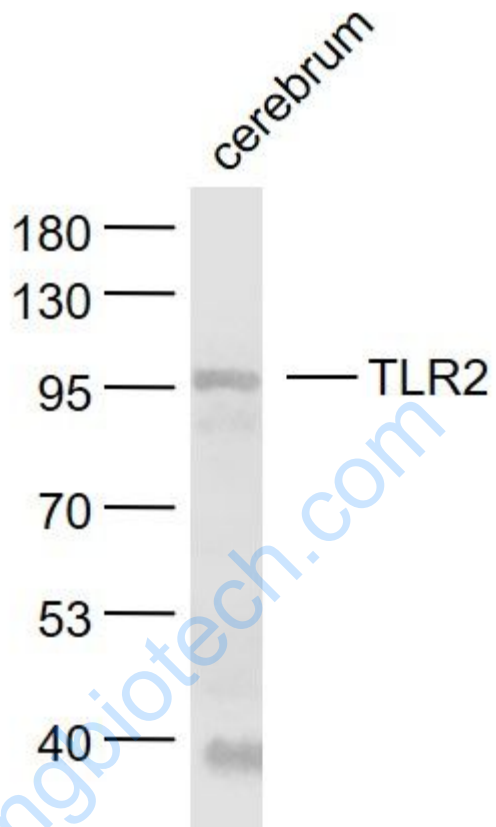
Thymus (Mouse)Lysate at 20 ug

Primary: Anti-TLR2 (SL1019R) at 1/300 dilution

Secondary: IRDye800CW Goat Anti-Rabbit IgG at 1/20000 dilution

Predicted band size: 84 kD

Observed band size: 110 kD



Sample:

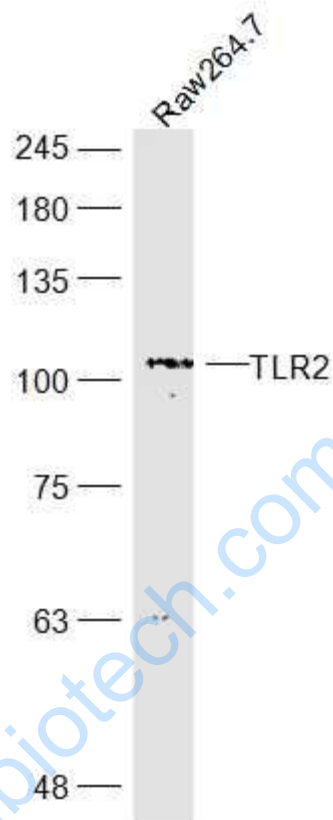
Cerebrum (Rat) Lysate at 40 ug

Primary: Anti-TLR2 (SL1019R) at 1/1000 dilution

Secondary: IRDye800CW Goat Anti-Rabbit IgG at 1/20000 dilution

Predicted band size: 84 kD

Observed band size: 95 kD



Sample:

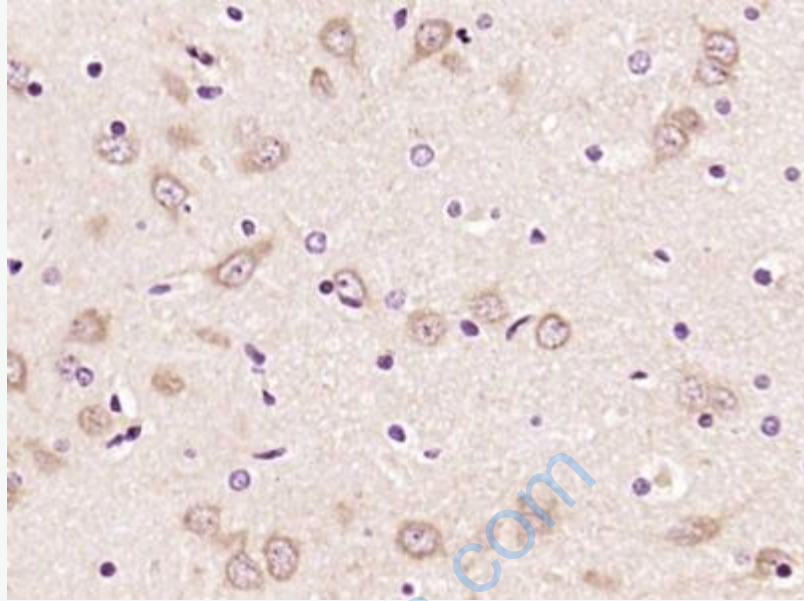
Raw264.7 (Mouse) Lysate at 30 ug

Primary: Anti-TLR2 (SL1019R) at 1/300 dilution

Secondary: IRDye800CW Goat Anti-Rabbit IgG at 1/20000 dilution

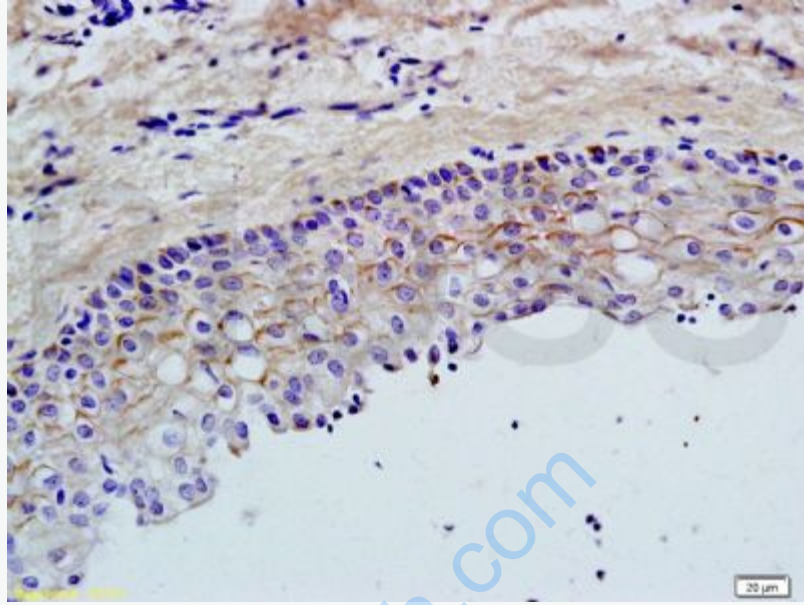
Predicted band size: 84 kD

Observed band size: 104kD



Paraformaldehyde-fixed, paraffin embedded (Rat brain); Antigen retrieval by boiling in sodium citrate buffer (pH6.0) for 15min; Block endogenous peroxidase by 3% hydrogen peroxide for 20 minutes; Blocking buffer (normal goat serum) at 37°C for 30min; Antibody incubation with (TLR2) Polyclonal Antibody, Unconjugated (SL1019R) at 1:400 overnight at 4°C, followed by operating according to SP Kit(Rabbit) (sp-0023) instructions and DAB staining.





Tissue/cell: rat ovary tissue; 4% Paraformaldehyde-fixed and paraffin-embedded;  
Antigen retrieval: citrate buffer ( 0.01M, pH 6.0 ), Boiling bathing for 15min; Block endogenous peroxidase by 3% Hydrogen peroxide for 30min; Blocking buffer (normal goat serum,C-0005) at 37°C for 20 min;  
Incubation: Anti-TLR2 Polyclonal Antibody, Unconjugated(SL1019R) 1:200, overnight at 4°C, followed by conjugation to the secondary antibody(SP-0023) and DAB(C-0010) staining