



## Rabbit Anti-Maltoporin antibody

SL10238R

<b>Product Name:</b>	Maltoporin
<b>Chinese Name:</b>	麦芽糖孔蛋白抗体
<b>Alias:</b>	LAMB_ECOLI; Lambda receptor protein; Maltose-inducible porin; maltose outer membrane porin (maltoporin); lamB.
<b>Organism Species:</b>	Rabbit
<b>Clonality:</b>	Polyclonal
<b>React Species:</b>	Escherichia Coli,
<b>Applications:</b>	WB=1:500-2000ELISA=1:500-1000IHC-P=1:400-800IHC-F=1:400-800ICC=1:100-500IF=1:100-500 (Paraffin sections need antigen repair) not yet tested in other applications. optimal dilutions/concentrations should be determined by the end user.
<b>Molecular weight:</b>	46kDa
<b>Cellular localization:</b>	The cell membrane
<b>Form:</b>	Lyophilized or Liquid
<b>Concentration:</b>	1mg/ml
<b>immunogen:</b>	KLH conjugated synthetic peptide derived from human Maltoporin:401-446/446
<b>Lsotype:</b>	IgG
<b>Purification:</b>	affinity purified by Protein A
<b>Storage Buffer:</b>	0.01M TBS(pH7.4) with 1% BSA, 0.03% Proclin300 and 50% Glycerol.
<b>Storage:</b>	Store at -20 °C for one year. Avoid repeated freeze/thaw cycles. The lyophilized antibody is stable at room temperature for at least one month and for greater than a year when kept at -20°C. When reconstituted in sterile pH 7.4 0.01M PBS or diluent of antibody the antibody is stable for at least two weeks at 2-4 °C.
<b>PubMed:</b>	<a href="#">PubMed</a>
<b>Product Detail:</b>	Involved in the transport of maltose and maltodextrins, indispensable for translocation of dextrins containing more than three glucosyl moieties. A hydrophobic path ('greasy slide') of aromatic residues serves to guide and select the sugars for transport through the channel. Also acts as a receptor for several bacteriophages including lambda.
	<b>Subunit:</b>

Homotrimer formed of three 18-stranded antiparallel beta-barrels, containing three independent channels.

**Subcellular Location:**

Cell outer membrane; Multi-pass membrane protein.

**Similarity:**

Belongs to the porin LamB (TC 1.B.3) family.

**SWISS:**

P02943

**Gene ID:**

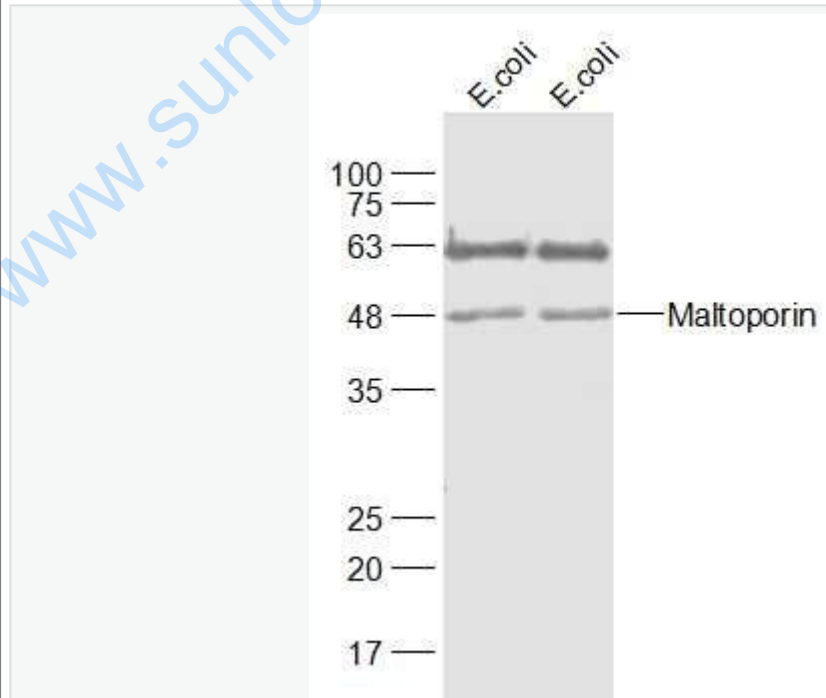
N/A

**Database links:**

**Important Note:**

This product as supplied is intended for research use only, not for use in human, therapeutic or diagnostic applications.

**Picture:**



Sample:

E.coli Lysate at 40 ug

E.coli Lysate at 40 ug

Primary: Anti-Maltoporin (SL10238R) at 1/1000 dilution

Secondary: IRDye800CW Goat Anti-Rabbit IgG at 1/20000 dilution

Predicted band size: 46 kD

Observed band size: 48 kD

[www.sunlongbiotech.com](http://www.sunlongbiotech.com)