



## Rabbit Anti-CRHR1 antibody

SL10248R

<b>Product Name:</b>	CRHR1
<b>Chinese Name:</b>	促肾上腺皮质激素释放激素受体1抗体
<b>Alias:</b>	CRF1; Corticotropin releasing hormone receptor variant 1h;CRF-RI; CRF 1; CRF R; CRFR1; CRH R1h; CRF-R1; CRHR 1; CRHR; CRHR1f; Releasing hormone receptor 1; Seven transmembrane helix receptor; corticotropin releasing hormone receptor 1; Crhr; MGC124237; MGC124240; CRF-R; CRF-R-1; CRF-R1; CRFR-1; CRH-R-1; CRH-R1; CRH-R1h; CRHR; CRHR1L; CRFR1 HUMAN.
<b>Organism Species:</b>	Rabbit
<b>Clonality:</b>	Polyclonal
<b>React Species:</b>	Human,Mouse,Rat,
<b>Applications:</b>	WB=1:500-2000ELISA=1:500-1000IHC-P=1:400-800IHC-F=1:400-800ICC=1:100-500IF=1:100-500 (Paraffin sections need antigen repair) not yet tested in other applications. optimal dilutions/concentrations should be determined by the end user.
<b>Molecular weight:</b>	48kDa
<b>Cellular localization:</b>	The cell membrane
<b>Form:</b>	Lyophilized or Liquid
<b>Concentration:</b>	1mg/ml
<b>immunogen:</b>	KLH conjugated synthetic peptide derived from human CRHR1:55-150/444<Extracellular>
<b>Lsotype:</b>	IgG
<b>Purification:</b>	affinity purified by Protein A
<b>Storage Buffer:</b>	0.01M TBS(pH7.4) with 1% BSA, 0.03% Proclin300 and 50% Glycerol.
<b>Storage:</b>	Store at -20 °C for one year. Avoid repeated freeze/thaw cycles. The lyophilized antibody is stable at room temperature for at least one month and for greater than a year when kept at -20°C. When reconstituted in sterile pH 7.4 0.01M PBS or diluent of antibody the antibody is stable for at least two weeks at 2-4 °C.
<b>PubMed:</b>	<a href="#">PubMed</a>
<b>Product Detail:</b>	This gene encodes a G-protein coupled receptor that binds neuropeptides of the corticotropin releasing hormone family that are major regulators of the hypothalamic-

pituitary-adrenal pathway. The encoded protein is essential for the activation of signal transduction pathways that regulate diverse physiological processes including stress, reproduction, immune response and obesity. Alternative splicing results in multiple transcript variants one of which is a non-coding read-through transcript with the neighboring gene MGC57346.

**Function:**

Receptor for corticotropin releasing factor (CRH). Shows high-affinity CRF binding. The activity of this receptor is mediated by G proteins which activate adenylyl cyclase.

**Subunit:**

Interacts (via N-terminal extracellular domain) with CRF and UCN.

**Subcellular Location:**

Cell membrane; Multi-pass membrane protein.

**Tissue Specificity:**

Predominantly expressed in the cerebellum, pituitary, cerebral cortex and olfactory lobe.

**Post-translational modifications:**

C-terminal Ser or Thr residues may be phosphorylated.

**Similarity:**

Belongs to the G-protein coupled receptor 2 family.

**SWISS:**

P34998

**Gene ID:**

1394

**Database links:**

[Entrez Gene: 1394](#)Human

[Entrez Gene: 12921](#)Mouse

[Entrez Gene: 58959](#)Rat

[Omim: 122561](#)Human

[SwissProt: P34998](#)Human

[SwissProt: P35347](#)Mouse

[SwissProt: P35353](#)Rat

[Unigene: 417628](#)Human

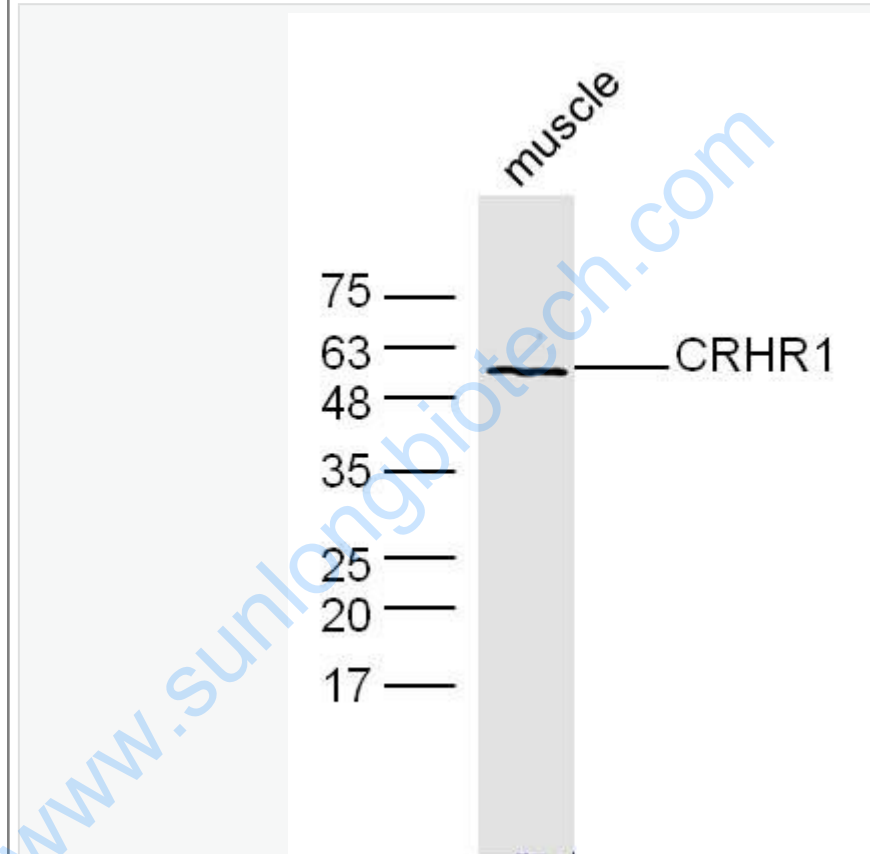
[Unigene: 1892](#)Mouse

[Unigene: 10499](#)Rat

**Important Note:**

This product as supplied is intended for research use only, not for use in human, therapeutic or diagnostic applications.

**Picture:**



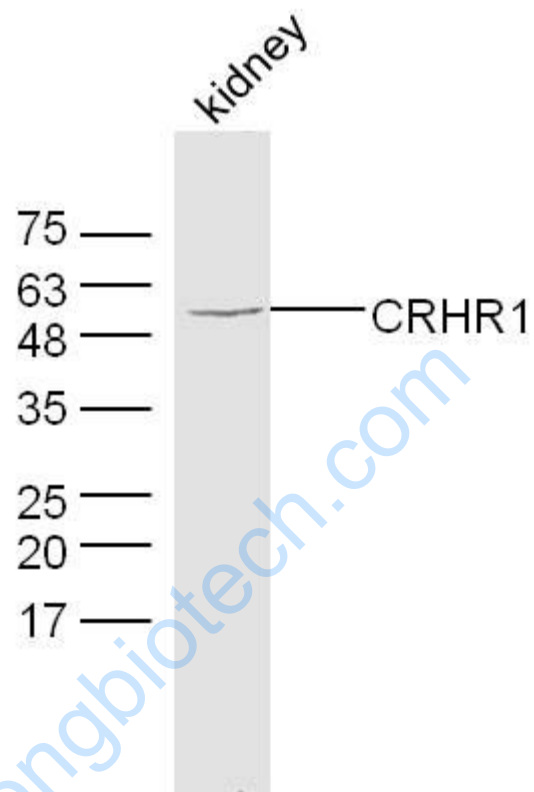
Sample: muscle (mouse) Lysate at 40 ug

Primary: Anti-CRHR1(SL10248R) at 1/300 dilution

Secondary: IRDye800CW Goat Anti-Rabbit IgG at 1/20000 dilution

Predicted band size: 48 kD

Observed band size: 58 kD



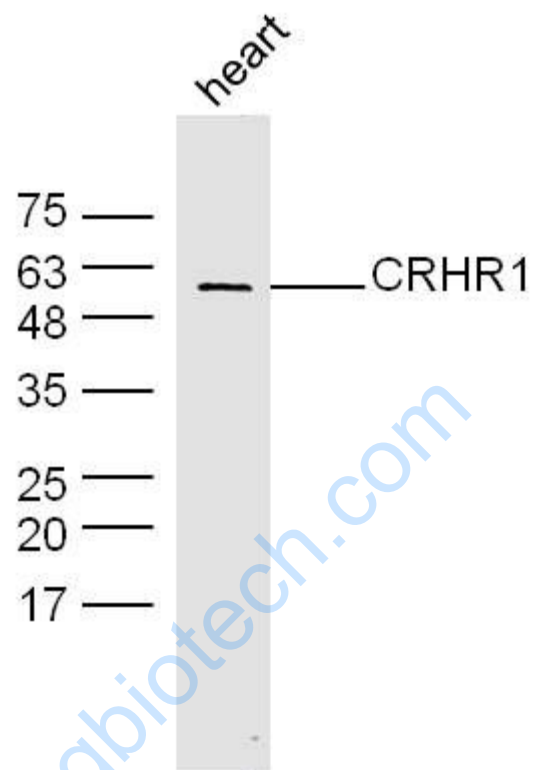
Sample: kidney (mouse) Lysate at 40 ug

Primary: Anti-CRHR1(SL10248R) at 1/300 dilution

Secondary: IRDye800CW Goat Anti-Rabbit IgG at 1/20000 dilution

Predicted band size: 48 kD

Observed band size: 58 kD



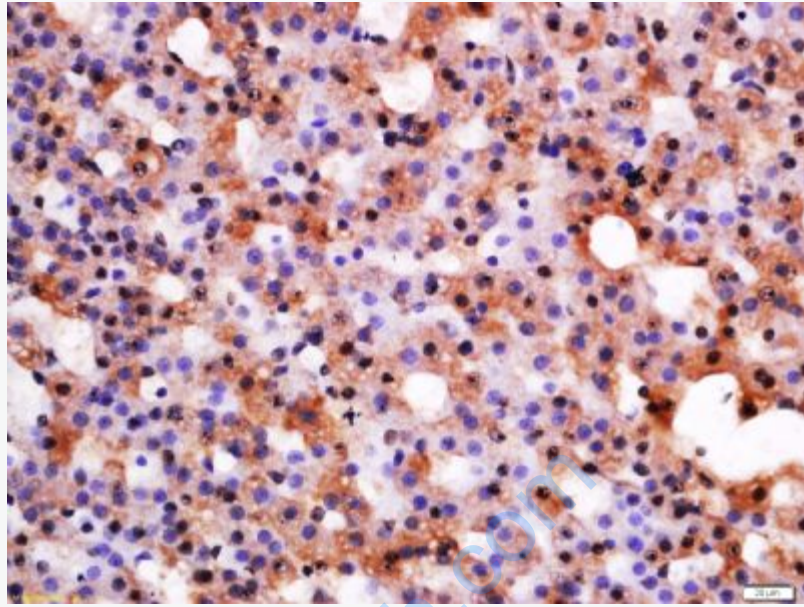
Sample: heart (mouse) Lysate at 40 ug

Primary: Anti-CRHR1(SL10248R) at 1/300 dilution

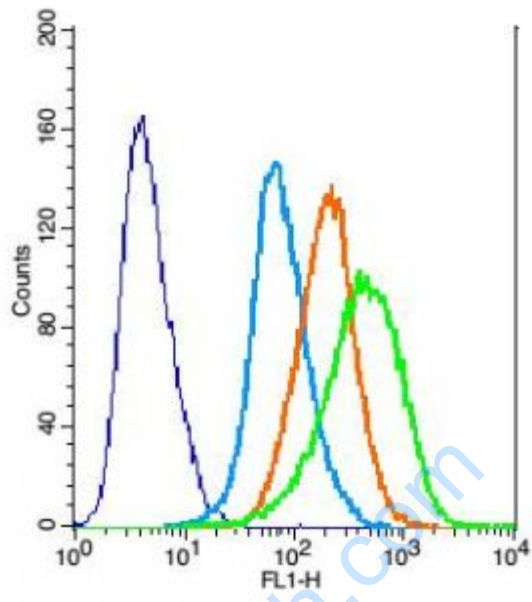
Secondary: IRDye800CW Goat Anti-Rabbit IgG at 1/20000 dilution

Predicted band size: 48 kD

Observed band size: 58 kD



Tissue/cell: Rat adrenal gland; 4% Paraformaldehyde-fixed and paraffin-embedded;  
Antigen retrieval: citrate buffer ( 0.01M, pH 6.0 ), Boiling bathing for 15min; Block  
endogenous peroxidase by 3% Hydrogen peroxide for 30min; Blocking buffer  
(normal goat serum,C-0005) at 37°C for 20 min;  
Incubation: Anti-CRHR1 Polyclonal Antibody, Unconjugated(SL10248R) 1:500,  
overnight at 4°C, followed by conjugation to the secondary antibody(SP-0023) and  
DAB(C-0010) staining



Key	Name	Parameter	Gate
—	RSC96-blank-20150605.021	FL1-H	G1
—	bs-0295G-FITC-RSC96-#1DE86F.044	FL1-H	G1
—	bs-0295P-FITC-RSC96#1DE871.045	FL1-H	G1
—	bs-10248R-FITC-RSC#1DE87B.050	FL1-H	G1

Positive control: RSC96 cells

Concentration: 5ug/10<sup>6</sup> cells

Incubation conditions: Avoid light , 30 minutes on the ice.